

Used Equipment
 No. 5 McCormick Silage Cutter, Ex. Cond.
 VG4D Wisc w/4 to 1 CLRD.
Steven Fisher
 RR 1 - Box 144
 Lincoln Univ., Pa. 19352

Jubilee Ford International 350 1 R Harvester
 NH Mower, 3 Pt.
 NH 402 Crimper
 NI 10 Corn Picker
 Farmall 130 w/cultivator
Harold L. Sample
 186 Pennsy Rd.
 New Providence, PA 17560
717-786-3087

ATTENTION DEALERS & FARMERS

We have the largest selection of good Corn & Grain Heads in Midwest. We have been serving farmers for 30 years and looking for business outside of normal trade area due to Drought.

COMBINES

- 1981 Int. 1480 axial flow w/30.5x32 rubber
- 1980 Int. 1480 axial flow w/30.5x32 rubber
- 1980 Int. 1460 axial flow, 1570 hours
- 1980 Int. 1440 w/712 hours
- 1975 Int. 615 gas w/800 series feederhouse
- 1973 Massey Ferguson 300 gas
- 1973 Massey Ferguson 510 diesel
- 1984 John Deere 6620 w/350 hrs.
- 1982 John Deere 8820 factory 4 wheel drive w/1300 hours
- 1977 John Deere 7700, 30.5x32. SHARP!
- 1978 John Deere 4400 diesel
- 1981 John Deere 4420 w/840 hours
- 1978 John Deere 6600 diesel hydro w/1700 hours
- 1976 Gleaner K w/air
- 1977 Gleaner F2, gas
- Gleaner E III
- 1979 New Holland TR70 Ford hydro w/1250 hours
- Oliver 7300
- 1971 Gleaner G, V-8 gas

50 GRAIN HEADS

- John Deere 215, 216 & 220 flex heads
- Int. 820, 13', 17 1/2' & 20' flex heads
- White 15' kwik-cut
- Massey Ferguson 1859, 13' & 20'
- 2-Massey Ferguson 2381, 22'
- Gleaner 13' wobble box, long snouts for F or F2
- Gleaner N-20' wobble box
- 25 various heads

100 CORN HEADS

- Gleaner A330, A338, A430, A438, A630, A638, A830, KF330, FG430, & FG438
- John Deere 244, 343, 443, 444, 643, 643 oil bath & 843
- Int. 824, 843 & 844, 733 & 944
- Massey Ferguson 1143, 1183, 43 & 44 lo profile
- New Holland 962N3 & 962N6
- White 704N, 704W, 706N, 706W & 703N
- New Idea 846N
- John Deere 653A, 454 & 453A bean heads

TRACTORS

- 1973 AC 200 w/Cab
- 1963 AC D19 Gas, 2550 Hrs.
- 1961 AC D15, Gas
- Ferguson T020 w/loader
- 1955 JD 70 Gas
- 1954 JD 60 Gas w/Loader
- JD 212 Lawn Tractor
- 1980 Int. 1586 w/1470 Hrs.
- 1977 Int. 574 Gas, 1525 Hrs.
- 1975 Int. 1466 diesel w/cab & air, 1800 hrs.
- 1974 Int. 1066 w/2013 hrs., sharp
- 1973 Int. 1066, 3200 Hrs.
- 1965 Int. 504 Gas w/Loader, 2220 Hrs.
- Int. 982 Hydro Lawn Tractor
- Int. 2250, QT Loader
- New Farmhand 248 Loader
- 1976 MF 255 diesel w/250 hrs.

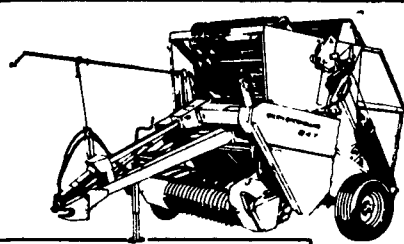
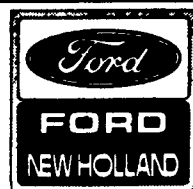
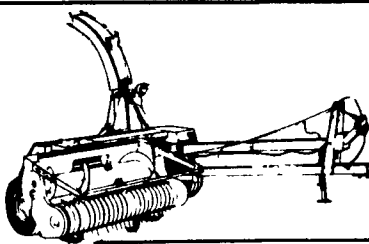
MISCELLANEOUS

- New Glencoe Soil Savers in stock, 9, 11 & 13 shank
- Used Glencoe 9 shank soil saver
- Hesston 4600 Baler
- Int. 435 Baler
- Int. 428 Baler
- Ford 532 Baler
- NH 26 Bower
- NI 325 Picker w/12 roll bed
- NI 324 Picker w/329 sheller

We have alot of other farm equipment & tractors. We have trucking available. See us for your Farm Machinery Needs!

Polk & Sons, Inc.
 R.R. #2 Box 85 A, Leesburg, IN 46538

Ph. 219-453-4311



NEW EQUIPMENT SPECIALS

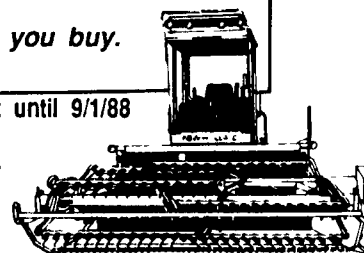
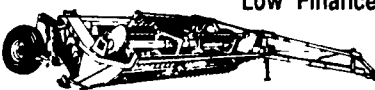
NH 514 Manure Spreader, 1100x20 Tires..... \$3,350

Many more items in stock
 Check our inventory & price before you buy.

Free Financing on Hay & Forage Equipment until 9/1/88

Low Finance Rates 0% - 12 Months
 5.9% - 24 Months
 7.9% - 36 Months

or
 Check with us for Big Cash Rebate Amounts



DEPENDABLE MOTOR CO.

East Main St., Honey Brook, Pa.
 215/273-3131 or 215/273-3737

Dependable Is More Than Our Name

Financing Available Thru Agri-Credit Corp.

35 Used Combines To Choose From

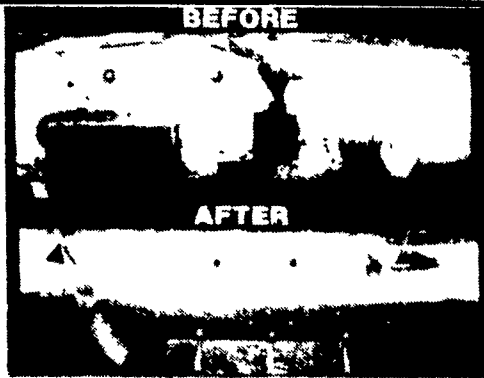
1984 MF 860 Gear, 1,030 Hrs.	\$32,000	1973 MF 510 Gear.	\$5,000
1984 MF 850 Hydro	\$38,000	1972 MF 760 Gear	\$5,000
1984 MF 850 Hydro	\$32,000	1971 MF 510 Gear	\$3,000
1982 MF 860 Hydro	\$24,000	1969 MF 510 Hydro	\$7,500
1980 New Idea 801 Diesel 4 Wheel Drive Power Unit.....	\$22,500	1966 MF 510 Diesel	\$2,500
1980 MF 760 Hydro	\$28,000	Oliver 525 w/2 Heads	\$1,500
1980 MF 540 962 Hrs.	\$15,000	IH 91 w/2 Heads	\$1,200
1978 MF 760 Hydro	\$16,000	MF 82	\$700
1978 MF 760 Hydro	\$16,000	NI 843, 3R Com Head	JD 20 Ft. Flex Head
1978 JD 7700 Hydro	\$16,000	JD 6 Row 30" Com Head	MF 6 Row 30" Com Head
1978 ID 7700 Hydro	\$15,000	JD 15 Ft. Flex Head	MF 4 Row 30" Com Head
1977 MF 750 Gear.....	\$16,000		
1977 MF 760 Hydro	\$15,000		
1977 MF 750 Gear.....	\$14,000		
1976 MF 760 Hydro	\$11,000		
1975 MF 760 Hydro	\$6,500		
1974 MF 760 Hydro	\$7,500		
1973 MF 760 Hydro	\$6,000		
1973 MF 510 Gear.....	\$3,500		

USED EQUIPMENT

MF 2-Way Plow.....	\$600
MF 4-16, 3PT Plow	\$300
MF 12' Transport Disk	\$1,800
NH 310 Baler w/Steel Whls. & Engine Mtg.	\$2,400
MF 345, 3-16 Auto Reset 3PT Plow.....	\$2,400
Glencoe 9 Tooth Soil Saver.....	\$2,500
Glenco 7 Tooth Soil Saver.....	\$3,900
MF 351 19 1/2 ft. Soil Finisher.....	\$5,200
Landoll 10 ft. Soil Finisher.....	\$3,200
Danuser Post Driver.....	\$1,650
Danuser Post Hole Digger.....	\$640
Danuser Wood Splitter.....	\$780
EZ Trail 6 Ton Running Gear.....	\$550
EZ 475 Bu. Self Unloading Grain Cart.....	\$6,400
MF 820 Hyd. 19 ft. Wing Disc.....	\$8,500
JD 336 Baler.....	\$2,600
Dunham Front End Ldr.....	\$1,500
48" Demo 3 Pt. Rotary Tiller.....	\$1,075
6' Rotary Cutter.....	\$525
New 8' Myer Snow Plow to fit Farm Tractor	\$1,400
AC Forage Wagon	\$1,600
IH 4R Fast Hitch Cultivator	\$650
Little Giant 26' Baler Elevator	\$800
Gill 6' Lawn Seeder	

USED TRACTORS

IH 1066	
MF 65 D.....	\$2,500
MF 65 D.....	\$2,200
MF 1100.....	\$5,200
MF 285.....	\$7,900
MF 1135.....	\$7,500
MF 50A TLB	\$12,500
MF 85 Gas	\$2,500
MF 1130.....	\$4,500
MF 1080.....	\$4,500
MF Super 90 Dsl.....	\$2,200
MF 1150.....	\$5,000
MF 285 w/New Tires & Engine Overhaul.	\$9,500



SCHMIDT "HEAVY DUTY REBUILT TABLE AUGER"

Get Your Table Auger Repaired For Your Combine. Replace Complete Section. Same As New. All Makes And Models. Why Buy New, Get Your Auger Repaired SAVE!!!

Call Now For Appointment
 And Price Quotation To
 Have Your Auger Repaired



M.M. WEAVER & SONS, INC.

Leola, PA 17540

(717) 656-2321

Located: 4 miles West of New Holland on Route 23, 1 1/2 miles Northeast of Leola on the North Groffdale Road, 1 mile on the right, opposite Groffdale Mennonite Church.