

# PENNFIELD-AG PROGRESS DAYS

On 11th & 12th Streets Next To Dairy & Livestock Tent

## Sign Up For FREE Calf Starter



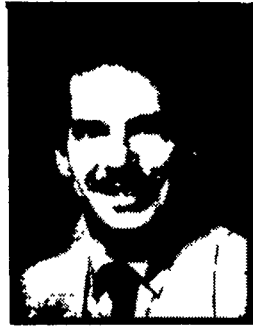
**Dr. Tim Snyder**  
Manager...  
Dairy  
Nutritional  
Services



**Don Mahlandt**  
Manager  
Dairy  
Feed  
Sales



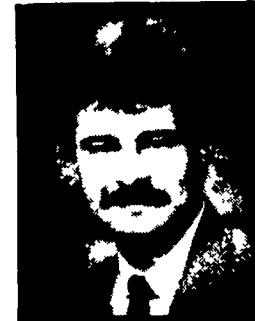
**10 DICK ROWE**



**9 DEWEY SHAFFER**



**8 GLENN FLICKINGER**  
AREA SALES  
SUPERVISOR



**7 LUTHER SMITH**



**4 DENNIS MYERS**



**14 DON SNYDER**  
AREA SALES  
SUPERVISOR



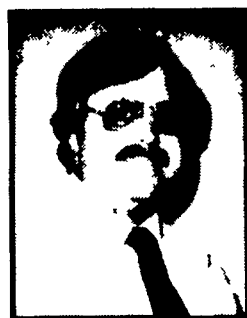
**11 PAT BAUMANN**



**15 WALTER OCKER**



**16 BOB YODER**



**12 PETE KNUTSEN**  
AREA SALES  
SUPERVISOR



**13 LORNE DETTER**



**1 DICK POOLE**



**2 LARRY BEAT**



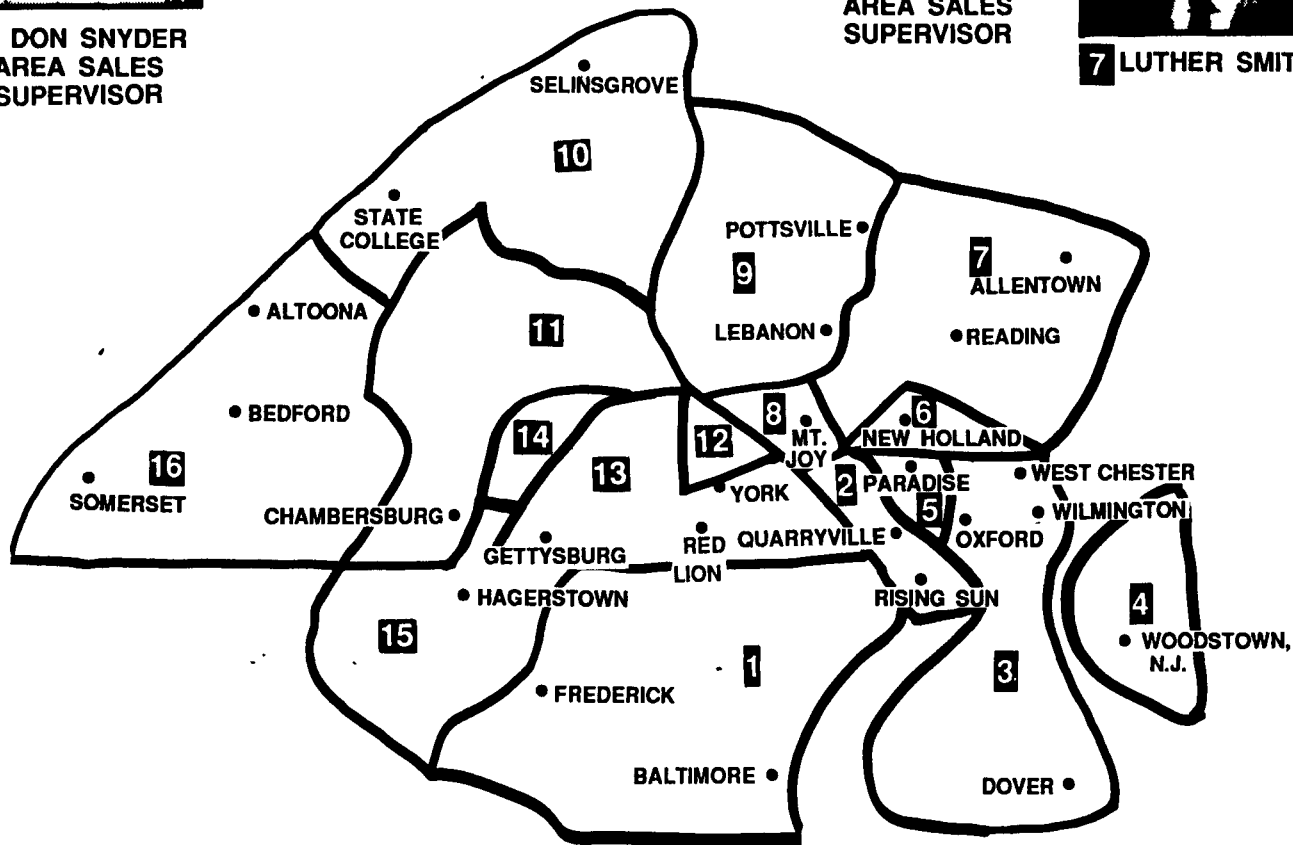
**3 DAVE SHEAFFER**  
AREA SALES  
SUPERVISOR



**5 JIM SPAHR**



**6 RICK STEHR**



### FEED PRICES FOR WEEK OF AUG 15 AND SUBJECT TO CHANGE WEEKLY WITH GRAIN MARKET

Includes 8 ton volume discount and cash discount of 2½ % due 15th following month. Deduct additional \$3.00 per ton if paid in 10 days.

#52114 14% Dairy Pellet	#51300 16% Dairy Pellet	#50800 16% Golden Flake	#51100 Summertime 16% Flake With Beet Pulp	#53300 Pellet 32% Dairy Conc.	#52700 27% Maximum Density Beans-Beet Pulp Conc.
\$173.70 Net/Ton	\$182.56 Net/Ton	\$191.19 Net/Ton	\$189.35 Net/Ton	\$279.24 Net/Ton	\$297.20 Net/Ton



FROM PA 1-800-732-0467 FROM MD, DE, & NJ 1-800-233-0202

# pennfield feeds

Quality — Service — Value