

Conestoga Classic Has \$2150 Top

LAMPETER (Lancaster)—The top of the Conestoga Classic here Thursday evening came midway through the sale when Loren and Helen Zimmerman, East Earl bid \$2150 for Binderway Vic Icicle, the fresh K-Way Apostle King Vic

daughter out of the GP-84 Mars Goldie cow with records up to 24,171 lbs. of milk and 951 lbs. of fat. The consignor was Harold B. Good, Stevens.

Second high price came on the first heifer in the ring. The stylish

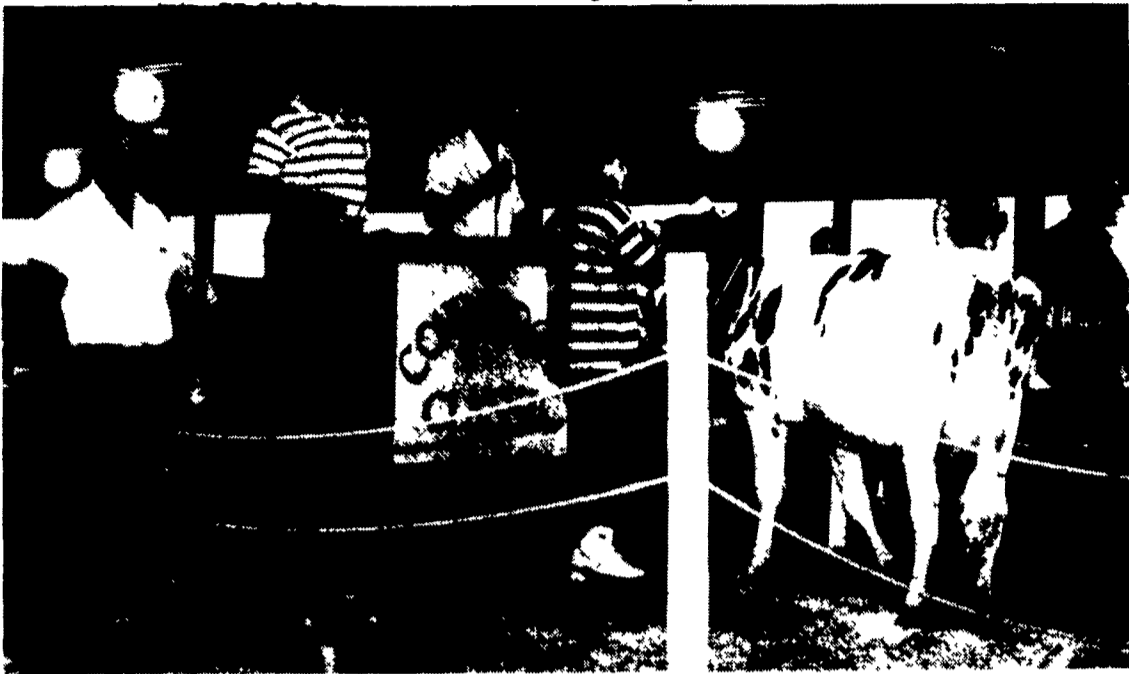
fresh Sunny-Craft Spirit daughter brought a bid of \$2050 from Kirk Lehman, Bloomsburg.

The third high price came on catalog no. 1. Welk Acres bought the Valiant granddaughter from an

excellent maternal line for \$1750. The consignor was Stonehurst Farm.

Average on the 43 head was \$1247. Harry Bachman was the auctioneer. Jay Howes read pedi-

grees. Selections were made by Elvin Hess, Arlen Keener, Paul Welk and David Kolb. A free dairy bar after the sale was sponsored by Bernard Morrissey Insurance, Inc., Ephrata.



At the Conestoga Classic.

Computer Careers

(Continued from Page A15)

for a college education.

Staff from the College of Agriculture will be available to discuss the wide variety of career opportunities in agriculture, as well as what Penn State's College of Agriculture has to offer academically. A 1986 study found a great demand for college graduates in the food and agricultural sciences, with 49,000 employment opportunities ranging from marketing and sales to scientific research and engineering.

Junior high and high school students may also be interested in a display about the Pennsylvania Governor's School for Agriculture, a summer program for academically talented students interested in the science of food, agriculture and the natural resources. Alan Finnecey, assistant director of the Governor's School, will be on hand to discuss the program.

A popular attraction returning this year is the microcomputer laboratory in the Youth Building. There will be seven half-hour sessions daily, from 10 a.m. to 2:30

p.m., where visitors can use a Macintosh computer to learn more about Ag Progress Days, the industry of agriculture, Penn State's College of Agriculture and career opportunities. Visitors will need an admission ticket for the sessions; the tickets will be available free at the Youth Building, at the event's information booth or from College of Agriculture student representatives throughout the site.

Just outside the youth Building will be a bit of nature, in a tent run by the university's Shaver's Creek Environmental Center. Visitors of all ages can enjoy a close look at a blind red-tailed hawk, and those who want a close-up experience will be able to handle a black rat snake and turtles. Shaver's Creek will also have hands-on displays dealing with different nature topics such as animal tracking, and a table featuring such items as antlers and animal bones. Staff naturalists will be on hand to tell visitors more about the exhibits.

| | |
|---|--|
| WHEAT | BARLEYS |
| <ul style="list-style-type: none"> • CARDINAL -Proven One Of The Highest Result On Test Plots • New - 863 G.R. Tyler - Scotty Various Other Varieties Available | <ul style="list-style-type: none"> Barsoy - Maury Pennco - Wisor |
| TIMOTHY and CLIMAX TIMOTHY Rye and Alfalfas | |
| BALER TWINE | FERTILIZERS |
| WHOLESALE & RETAIL BOYDELL FARMS 302 Iona Rd., Lebanon, PA 17042 Phone: 717-272-8943 | |

NOW YOU CAN GET THROUGH ANYTHING WITHOUT CLUTCHING.

Several Units On Display With Various Attachments Ready For Immediate Delivery

Our B9200 HST will get you through everything from farming to light utility without a clutch Or a shift lever

A single foot pedal controls the Kubota's speed as well as forward and reverse directions You control it using heel-toe movements The B9200 HST's 22 5 horsepower diesel engine does the rest

Working a front loader or mowing around trees has never been more effortless Or efficient

So if you want a tractor that's economical and easy to operate, the answer's automatic Kubota

Nothing like it on earth.

See Us For:

★ SALES ★ RENTALS
 ★ PARTS ★ SERVICE

AUGUST DISCOUNT DAYS
 Call For Extra Special Pricing

Full Line of Kubota Equipment Available At:
NICARRY EQUIPMENT CO.
 Rt 2, Box 2008, Reading, Pa. 19605 215-926-2441
 Located: 4 Miles North of Reading On Rt. 61 - 2 Miles South of Leesport
 Hours: Mon. thru Fri. 8 to 5; Sat. 8 to 3

NEW RELEASE

John Shearer Linkage Drill

See On Display At Ag Progress Days ABC Groff Booth W. 6th St.

This very competitively priced, new Linkage Drill is designed for pasture improvement by direct drilling into existing pastures. It is available in either,

- TYNE,
- COULTER TYNE or
- SOD SEED DISC DRILL models.

The new John Shearer 'T' Boot is available for the Tyne and Coulter Tyne models The very effective slicing action of this attachment creates an inverted 'T' slot beneath the soil surface Roots and weeds are cut out, creating an ideal seed bed for effective seed germination

distributors and rubber gates

- Traditional John Shearer strength of construction
- 3 Point Linkage Drill Bromides Available in 4 Sizes 10, 13, 16 & 19

MANUFACTURER'S DIVERSIFIED SERVICES
 112 So. Railroad Ave., New Holland, PA 171-355-2446

John Shearer
 World Leader in Seeding Technology
 PO Box 32 Welland SA 5007 Tel (08) 268 9555

Features include

- Large capacity seed and fertilizer box
- Fully enclosed oil bath gearbox
- Nylon fluted and peg tooth