

# Poultry Queen

(Continued from Page A1)

title. Actually surviving the clubs had nothing to do with her capturing the crown. She earned that through her creative presentation and her answer to an impromptu question given to each of the contestants.

The 17-year-old New Holland native, answered the master of ceremonies question, "If you were given the power to give man one gift, but only one gift, what would it be and why?" She answered, "I'd give them good health." She explained that she is very appreciative of her good health and thinks it's important and something she wishes everyone could have.

Since this is election year, Alissa's presentation represented a political campaign. Dressed as Uncle Sam, and clucking like a chicken, "Dukasis, Dukasis," Alissa questioned if voters prefer turkey hunting in the Bush. After presenting a rousing speech patterned after the Gettysburg address but slanted toward the belief that "All good eggs are created equal," Alissa's six-year-old niece Tara Hooper jumped from a make-believe egg and shouted, "Vote for poultry!" In typical campaign style, she tossed styrofoam eggs carrying the poultry message into the audience.

The personable Garden Spot High School senior also received the Miss Congeniality Award. Alissa noted that she loves people and tries to get to know them.

Alissa helps her parents Mervin and Ruth Hooper, who house 190,000 pullets annually on their New Holland poultry farm. As poultry queen, Alissa will promote poultry products at schools, malls, fairs, farmshows and other promotions.

Assisting her is Rebecca Barley,

the alternate queen. Rebecca says she feels confident that Alissa and she will do a good job together promoting the projects. The 17-year-old loves living on a farm and after her senior year at Penn Manor High School, is Penn State bound.

Rebecca answered the master of ceremonies question by saying, "If I had the power to give mankind one gift, I would give them the ability to be kind to everyone and not judge others by how they look or dress because, I believe, everyone should be accepted as is."

For the talent part of the program, Rebecca, depicting a girl dressed in old, faded jeans, plaid shirt and carrying a fishing line, fished in a fake pond and sang about eggs and chickens. Although she had not sang publically before, Rebecca wasn't scared. She said, "I figured if I used a little girl's voice, it wouldn't matter if I did go off tune."

Rebecca has gained a lot of experience in FFA in public speaking and horticulture. On the farm she helps plant tobacco, cleans the chicken house, and helps unload the peeps and adjust the water cups and helps her mom in gardening and house chores.

Other contestants included Karen Brubaker, Manheim;

# Penn State's Ag Progress

(Continued from Page A1)

Visitors will once again be able to ask Penn State faculty questions about animal health. Gardeners and homeowners can have their plant problems diagnosed at the lawn, landscape and garden tent.

The Microcomputer Laboratory will return to the Youth Building with an expanded schedule. Seven 30-minute classes each day will give visitors a chance to learn the basics of computer operation and see the applications of this technology to agriculture. College counselors will be available to answer questions about admission, financial aid and programs available at Penn State, and career counselors will use a computer

Yeshashwork Kilbour, Reinholds, and Lisa Nolt of Paradise. The contestants modeled clothing from Country Lane Boutique during a short fashion show.

Teresa Martin, the former poultry queen, bid farewell after telling the audience about her year as reigning queen.

Judges for the event included: Sonya Wasco, former ag teacher from Leola, Dennis Williamson, Powl's Feed Service, Glenn Hartz, branch officer for Bank of Lancaster County, Atglen.

For a profile on Alissa Hooper, turn to page B16.

program called "Discover" to help young people explore options for their future.

New this year are displays and demonstrations by more than 30 professional crafts people. These individuals have established successful businesses marketing their art. In the Heritage Crafts tent they will demonstrate the skills that have made their crafts unique and profitable. They will also discuss the economic impact these crafts have had on Pennsylvania's rural areas.

Field machinery demonstrations are planned throughout the three-day event. One of the unique

aspects of Ag Progress Days is that visitors are able to see much of the \$20 million in machinery in operation. Special demonstrations this year will focus on manure spreading practices and equipment. Faculty and staff will discuss what to look for when buying a manure spreader.

Ag Progress Days is held at the Rock Springs Agricultural Research Center on Route 45, nine miles southwest of State College. Admission and parking are free. The grounds are open from 9:00 a.m. to 5:00 p.m. Tuesday, Wednesday and Thursday, August 16, 17 and 18.

## Pennsylvania Pork Producers Can Vote For Referendum

WASHINGTON, DC — Pennsylvania pork producers have received USDA approval to vote on the pork referendum while attending Ag Progress Days at Penn State. "We feel this will give producers an excellent opportunity to vote," said David Reinecker, president of the state Pork Producer's Council. "We feel we may get as many walk-ins as we will (get votes) on September 7th and 8th."

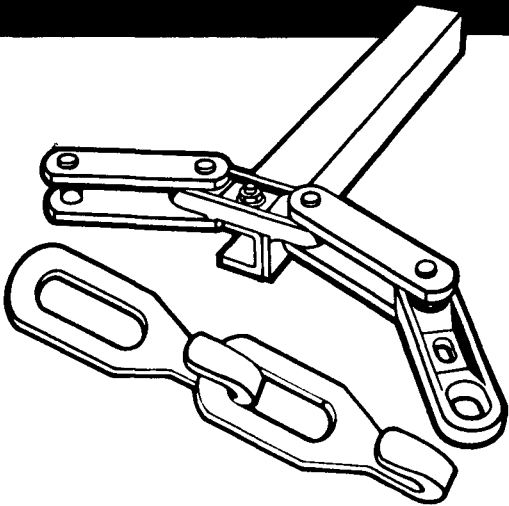
Pennsylvania producers and importers unable to vote in person may obtain an absentee ballot and vote immediately at Ag Progress

Days on August 9 to 11. Ballots will be distributed by Ken Kephart and Mike Miller only. They will be in the Dairy and Livestock tent. Marked ballots will be passed on to the appropriate county extension offices.

Absentee ballots also may be obtained by writing or visiting Ken Kephart, Pork Referendum State Extension Coordinator at 312 William L. Henning Building, University Park, PA 16802. Absentee ballots will be available from August 1 until close of business, August

(Turn to Page A34)

## BETTER CHAIN AT FANTASTIC PRICES!



When your barn cleaner needs new chain—whether flat link or Hook-Link™ type—we have the perfect replacements. Both links are totally forged of rugged high carbon steel to reduce wear extend working life. No wonder our chain has a 10-year warranty. Fits most barn cleaners.

### JAMESWAY® BARN CLEANER replacement chain

TEN YEAR WARRANTY ON ALL CHAIN



NUMBER ONE IN VALUE...AND MOVING UP!

### LAPP'S BARN EQUIPMENT

Sales & Service  
5935 Old Philadelphia Pike, Gap, PA 17527  
(717) 442-8134

## ÖVERUM reversible ploughs

Ploughs with a 150 year history



Överum mounted reversible plough with hydraulic stone release system 2-4 furrows



Överum semi-mounted reversible plough 4-6 furrows with hydraulic stone release system

Överum are specialists in hydraulic stone trips. All the parts in the frame, the beams, bodies, etc are chosen to give maximum strength and durability to the plough.

Överum reversible ploughs turn over smoothly and safely. The pressure required to trip the hydraulic stone release system can be adjusted to suit ploughing conditions.

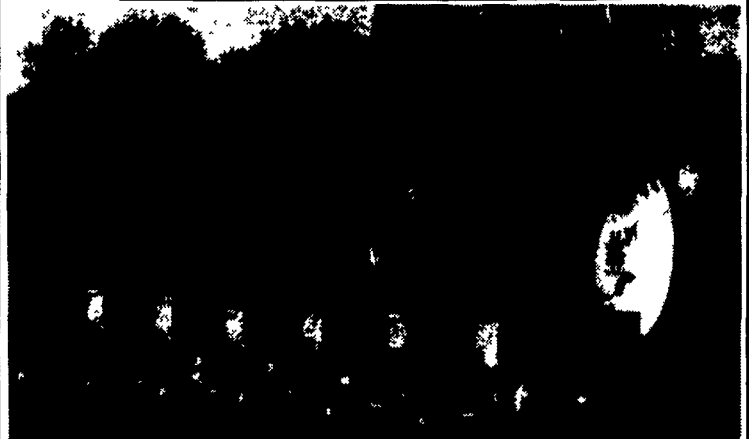
Energy efficient, economic wearing parts, low service requirements = outstanding overall economy.

Överum — developing products for the needs of agriculture.

LOOK FOR Överum At AG PROGRESS DAYS

## NIBEX 500

### Precision seeder



### CUP DISC

For thin-line group or band planting of natural and pelleted seed. Even for hard-to-handle seed such as dill, cucumber and parsnip. A wide selection of cup sizes and shapes in combination with a variety of coulters make NIBEX 500 an ideal all-round precision seeder.

The cups gently pick up the seeds and place them directly in the furrow — without the slightest damage!

With the precision-feed system, you avoid heavy costs — especially by using natural seed.

Difficult, costly thinning is eliminated entirely for some crops and reduced considerably for others.

### NEW! Attention Vegetable Growers! MINI-NIBEX PRECISION VEGETABLE PLANTER

For growers with up to 10 acres of vegetables. You can sow 2 acres per day!

Vegetable growing has developed into a highly intensified business. The demand for high quality and low prices is increasing — the cost of labor is rising.

MINI-NIBEX will solve your problems! For Efficient, Economical Vegetable Growing With Less Work - Lower Costs - Easier Planning.

• Suitable For Cell Wheel  
• Cell Wheel Recommended

IN STOCK: Call Bob For Free Literature And Additional Information

### IDEAL FOR PLANTING:

- |                  |                 |
|------------------|-----------------|
| Asparagus        | Leek            |
| Beans            | Lettuce         |
| Cantaloupe       | Mustard         |
| Carrot           | Rape            |
| Celery           | Onion           |
| Chives           | Parsley         |
| Cole crops*      | Parsnip         |
| Broccoli         | Pepper          |
| Brussels Sprouts | Radish and      |
| Cabbage          | Blackradish     |
| Cauliflower      | Redbeet         |
| Napa Cabbage     | Spinach         |
| Cucumber         | Sugar beet**    |
| Gherkin          | Tomato          |
| Dill             | Tomato-group    |
| Eggplant         | planting        |
| Endive/chicory   | Turnip          |
| Fennel           | Pelleted seed** |
| Flower Seeds     |                 |

LOOK FOR NIBEX AT AG PROGRESS DAYS

See Us At  
Ag Progress Days -  
Located On  
West 6th Street



Mon.-Fri.  
7:30 AM to 5:30 PM  
Sat.  
7:30 AM to 12 Noon

110 South Railroad Ave. • New Holland, PA 17557 • Telephone (717) 354-4731