

York Co. DHIA

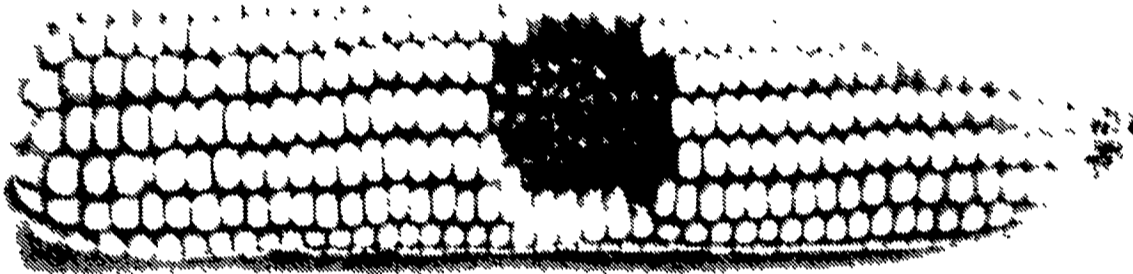
(Continued from Page F16)

117J	3	3-6	305	16,761	3.9	661
103K	3	2-3	305	16,903	4.0	683
RR&MR Stev	3	3-0	305	21,304	3.9	830
Ronnie	3	5-11	305	18,867	3.9	751
Topsy	3	5-11	305	21,627	3.8	829
Pueblo	3	5-11	305	21,627	3.8	829
Smysers Richlawn Fms						
Joann	3	7-1	305	21,282	4.2	913
Josie	3	5-9	305	21,749	3.5	764
Renee	3	6-0	281	16,519	4.5	743
Deloris	3	5-2	276	27,855	3.6	1011
Jewel	3	5-2	214	24,789	3.2	795
Peg	3	2-4	303	18,746	3.7	699
Spot	3	1-11	305	18,728	4.5	860
T Edwin Johnson						
Grace	3	8-7	305	19,358	4.2	816
Collie	3	5-7	305	19,580	4.1	803
Hidden Springs Farm						
Nancy	3	6-5	305	17,393	4.0	702
Falcon	3	5-1	305	21,030	3.4	717
Harmony	3	4-11	303	17,425	4.2	748
Phillip D Laughman						
Hilda	3	7-11	305	17,531	4.0	701
Wayne B Mummert						
73	3	4-1	305	19,968	4.0	813
Lynn Wolf						
Lilac	3	6-4	305	24,311	4.2	1038
Noble	3	3-11	305	24,267	3.8	932
Princes	3	1-11	305	18,720	3.6	674
Ramsey S Cooper Jr						
Whisper	3	2-9	305	16,733	4.0	670
Melvin R Lehr						
29	3	6-3	300	18,151	3.9	713
Elvin R Deiter						
Unipod	3	4-9	304	16,004	4.0	653
Ulesta	3	4-8	297	18,672	4.2	787
Walker	3	3-6	305	18,839	3.6	685

Wayshar Farm									
51	3	5-2	305	21,847	3.7	826			
Lily	3	5-1	305	22,233	3.5	792			
Kenneth L Rexroth									
161	3	6-11	275	18,644	3.8	711			
82	3	3-8	305	21,366	3.6	786			
Donald Wilson									
Bell 88	3	8-3	305	18,054	4.1	751			
75	3	5-11	305	20,155	3.2	654			
Rick L Cook									
67	3	6-1	289	17,595	4.2	748			
31	3	3-10	305	16,211	4.2	683			
16	3	2-1	305	16,569	4.3	717			
J Donnell Taylor									
Hattie	3	5-2	305	19,252	3.4	665			
Susan	3	3-9	305	16,658	3.9	657			
Marie	3	3-11	302	19,100	3.4	665			
Dena	3	3-11	305	17,892	3.7	678			
Denise	3	3-0	305	23,051	3.5	807			
Karen	3	3-0	305	18,909	3.4	658			
Elvin G Molison									
109	3	4-10	305	19,185	3.7	716			
21	3	4-1	305	18,688	4.0	764			
248	3	2-1	305	18,155	4.2	769			
Mervin W Hertzler									
Tamanth	2	3-6	305	15,012	4.4	664			
Gary W Thoman									
928	3	4-3	305	19,098	3.6	699			
B Robert Charles									
Heather	3	6-3	305	18,097	3.7	673			
Josie	3	3-10	248	17,703	3.8	678			
Kitty	3	3-3	305	20,661	3.5	729			
Kris	3	2-11	305	18,686	3.5	668			
Lilac	3	2-3	305	17,541	4.0	712			
R&M Farms									
72	3	8-6	305	17,074	4.3	736			
Circle Creek Hol									
Floppy	3	7-7	305	18,463	3.7	694			
Robt Baumgardner Jr									
51	3	3-5	303	22,777	3.8	868			

Big T Holsteins									
Holly	3	8-4	305	21,200	4.1	871			
Rock	3	9-8	305	20,592	3.3	680			
Star	3	8-0	305	19,549	3.4	679			
Michele	3	6-7	292	19,406	3.7	736			
Marsha	3	3-5	305	20,805	3.3	703			
Dusty	3	3-4	305	19,426	3.4	666			
Ann	3	2-5	305	17,654	3.9	701			
Perrydell Farms									
153	3	12-10	305	14,815	4.6	686			
113	3	5-9	301	21,626	3.3	719			
57	3	5-8	295	18,618	3.8	718			
36	3	4-11	292	18,900	4.0	766			
159	3	5-1	305	21,255	3.3	716			
39	3	2-10	305	17,417	3.7	650			
10	3	2-0	305	16,467	3.9	651			
David Gemmill									
11	3	3-4	305	19,794	3.2	651			
Double D Farm									
300	3	3-1	263	17,864	3.8	682			
Dale Clymer									
Wally	3	6-11	305	20,263	3.3	678			
Deal Holsteins Farm									
212	3	4-4	305	19,309	3.5	675			
Howard G Taylor									
19A	3	4-6	305	16,863	3.9	673			
Jim&Holly McCaffree									
Little	3	5-0	305	21,687	3.4	741			
Satin	3	2-5	305	18,119	3.8	703			
Brandy	8	0-0	301	17,837	4.0	728			
Dan + Patti Hushon									
Daffy	3	2-11	305	20,187	3.4	705			
Fawn	3	5-6	305	18,647	3.5	658			
Leonard Greek									
Jill102	3	4-8	305	22,112	3.8	840			
Wam 93	3	3-0	305	18,834	3.9	747			
Lonni86	3	3-1	305	17,951	3.7	665			
Ann + Kurt Pealer									
Bristle	3	8-4	305	23,255	3.0	702			
Steve W Sydor									
31	3	5-1	305	15,776	4.5	711			

(Turn to Page F18)



IS FERMENTATION



TAKING A BITE



OUT OF YOUR



DRY MATTER?

IT IS IF YOU'RE NOT USING SILAGE FRESH. Uncontrolled fermentation eats up more dry matter than you might think. About 30,000 lbs in a 300-ton silo! Nothing to sneeze at with today's high production costs. That's why it's smart to make Agway Silage Fresh Enzyme Additive or Silage Fresh Bacterial Inoculant part of your silo management program.

Silage Fresh controls fermentation to help you recover more tons of dry matter. It improves forage quality, too, for more milk per acre of corn ensiled. Find out which Silage Fresh product will work best for you by calling your Agway Farm Enterprise Salesperson today.

Working for people who work the land.



Agway Farm Enterprise Service

© 1988 Agway Inc.



US AGRI-SYSTEMS

SPECIALIZED FARM EQUIPMENT

OXFORD, PA 19363

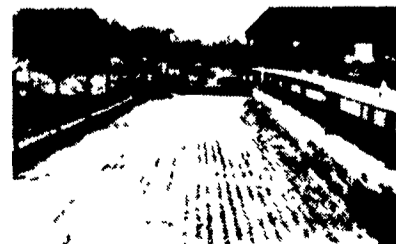
(800) 222-2948 (301) 398-2948

MANURE MANAGEMENT SPECIALISTS

SLICK CONCRETE CAN BE ROUGHENED

SCABBLING is an effective way to avoid unnecessary losses of cattle. The SCABBLER makes bands about two inches wide approximately 1/8" to 3/16 in. depth. This gives sufficient area for good footing while allowing you to scrape the smooth surface as before. It is near enough to the surface to give your cows full advantage of the roughness and deep enough to remain effective for years. It greatly aids in heat detection.

And the good news is that it is reasonably priced. You have the choice of doing it yourself or having us do it for you. We offer service right to your door. Call us for more details.



SUBURBAN RENTALS, INC.

Call 800-692-0123

We go almost anywhere.