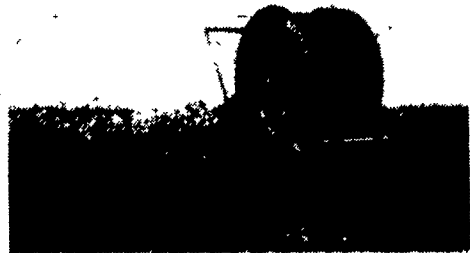
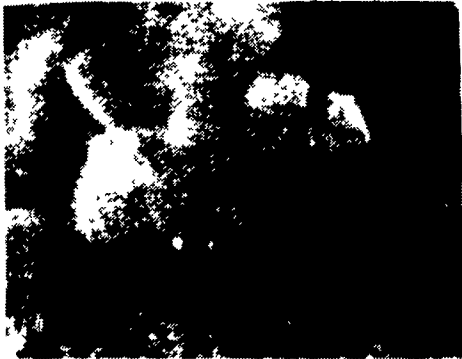


TICO IRRIGATION & BAUER RAINSTAR HOSE REEL



- UNIFORM WATER DISTRIBUTION • HIGH ENERGY SAVINGS
- INSENSITIVE TO WIND ACTIONS • LOW MAINTENANCE

| MODEL | IRRIGATED ACRES-INCH PER WEEK | GPM | IRRIGATED ACRES PER SETTING | MAXIMUM WIDTH + LENGTH OF IRRIGATED STRIP | PRICE |
|---------|-------------------------------|-----|-----------------------------|---|----------|
| 65-250 | 50 | 160 | 5 | 220'x790' | \$10,950 |
| 85-280 | 75 | 250 | 6 | 261'x984' | \$15,950 |
| 90-320 | 100 | 330 | 7½ | 300'x1150' | \$19,950 |
| 110-350 | 150 | 500 | 10 | 310'x1180' | \$24,950 |
| 125-350 | 225 | 650 | 12 | 333'x1210' | \$29,950 |

WE OFFER ALL TYPES

Bauer Rainstar Reel Irrigator

- PUMPS
- SPRINKLERS
- PIPES
- HOSE REELS

ALL SUPPLIES ARE ON HAND AND READY FOR IMMEDIATE DELIVERY.

We'll design and install a system for any requirement - using TICO quick couple pipe (the only irrigation pipe made to withstand 300 p.s.i. pressure) and standard components. Over 30 years service to U.S. and Canadian growers.

JUST ADD WATER OR MANURE (IF IN CLOSE PROXIMITY TO WATER OR LAGOON). WE PROVIDE PUMP, SUCTION, REEL, CONNECTIONS TO REEL, PRIMER, PTO & GUN.

CALL, WRITE OR STOP IN AND SEE US FOR QUOTE ON PIPE FOR SITUATIONS WHERE STREAM, POND, OR LAGOON IS MORE REMOTE.

"USED" IRRIGATION SPECIALS

- 1 - CHRYSLER, 600 GPM AT 120 PSI \$3,750
- 1 - GORMAN RUPP 64 AG PTO, 700 GPM AT 120 PSI \$2,250
- 1 - HALE PTO 4 PT, 600 GPM AT 150 PSI \$2,750
- 1 - MARLOW GEGSG, 1000 GPM AT 110 PSI \$2,950
- 1 - AG-RAIN SOFT HOSE TRAVELER, 660 FT. HOSE, NELSON 200 GUN, WATER POWERED \$5,950
- 2 - ¼ MILE LINES OF THUNDERBIRD 5" SIDE ROLL MECHANICAL MOVE IRRIGATION \$6,500/EA

BAUER

TICO MANUFACTURING, INC.

IRRIGATION HEADQUARTERS RT. 13, WILLIAMSTOWN, N.Y. 13493
EASTERN UNITED STATES 24 HR. PHONE (315)964-2214

IN VIRGINIA AREA:

CALL LLOYD INGRAM AT 703-369-4486
AFTER 4:00

Rye Straw, Truckload Or
Wagon Load Quantities, Good
Color, 40 Lb. Bales
Call 315-964-2294

Kustro Rye Seed, Yields Up To
80 Bu./Acre.
\$5.00/Bulk Bushel or
\$6.00/Bagged Bushel
Call 315-964-2294



'82 JD 2750 (2140) 2 WD, C/A,
2400 Hrs., 17'6x38 R, 2 Remotes
\$18,900
'83 JD 2750 (2140) 2 WD, Cab,
3122 Hrs., 13.6x38, 2 Remotes
\$16,900



'83 JD 2950 (3140), 2WD, C/A,
1971 Hrs., 16.9x38, Hi-Lo
\$15,900
'83 JD 2950 (3140) 4 WD, Cab,
2350 Hrs., 2 Remotes, 18.4x38R
\$22,900



JD 4040 2WD, C/A, 4050 Hrs.,
18.4x38R, 2 Remotes. Quad
\$14,900
'80 JD 4040 2 WD C/A, 3600
Hrs., 18.4x38 Dual Remotes
Quad \$15,900
'81 JD 4040, 2 WD, C/A, 4800
Hrs., 18.4x38 Turbo. Quad
\$15,900
'82 JD 4040S 2 WD C/A 2206
Hrs., 18.4x38 New 2 Remotes
\$26,900



'80 JD 4240, 2 WD C/A, 4450
Hrs., 18.4R38 \$17,900



**BEFORE YOU BUY
ANY TRACTOR...**
NEW or USED... 2WD or 4WD...
CHECK the UNBELIEVABLY
LOW PRICES
at



DAVEY JOAN'S TRACTOR SUPER-MART

Location: Junction of NY 104 and NY 13
Williamstown, NY 13493

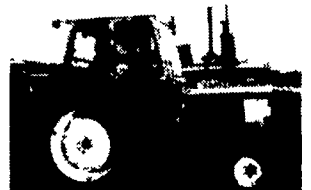
1-315-964-2294

WORLD'S BEST PRICES ON NEW JD'S

8-13

SEE US AT
AG PROGRESS
DAYS!

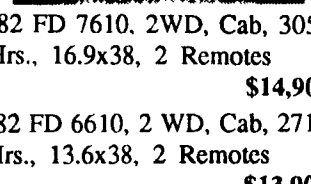
Located: W. 8th Street



'82 FD 5610, 2WD, Cab, 2493
Hrs., 13.6/12x38, Dual Power
\$15,900



'82 FD 7610, 2WD, Cab, 3055
Hrs., 16.9x38, 2 Remotes
\$14,900



'82 FD 6610, 2 WD, Cab, 2713
Hrs., 13.6x38, 2 Remotes
\$13,900



'78 FD 8700, 2WD, C/A,
18.4x38, 2 Remotes, 3600 Hrs.
\$14,900

| | PRICE FIGHTER | 2WD DELUXE | 4WD DELUXE |
|---------------|------------------|---------------|---------------|
| JD 2155 | \$13,500 | \$14,500 | \$18,700 |
| JD 2355 | \$15,700 | \$16,500 | \$20,600 |
| JD 2355N..... | \$15,500 | \$16,500 | \$20,500 |
| JD 2555 | \$18,500 | \$19,500 | \$22,900 |
| JD 2755 | \$20,900 | \$21,900 | \$26,500 |
| JD 2855N..... | \$21,500 | \$22,500 | \$26,900 |
| JD 2955 | \$23,200 | \$24,200 | \$28,900 |

ADD \$5,500 FOR SOUND-GUARD CAB W/AIR, \$1,000 FOR HI-LO
SHIFT, \$1,000 FOR SHUTTLE, EXTRA REMOTE \$500, POWER
SHIFT \$3,500.

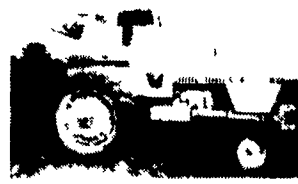
DELUXE MODELS HAVE TSS (TOP SHAFT SYNCHRONIZED) TRANS-
MISSION AND TILT STEERING WHEEL.



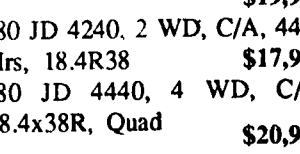
'80 JD 4240, 2 WD, C/A, 3400
Hrs., 18.4x38R, Quad
\$19,900



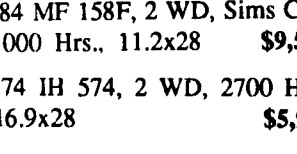
'76 IH 966, 4 WD, Cab, 6400
Hrs., 18.4x38 \$9,900



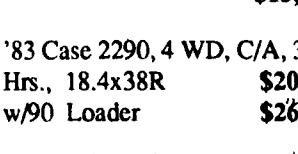
'80 Case 2090, 2WD, C/A, 1740
Hrs., 16.9Rx38, 2 Remotes
\$15,900



'80 JD 4240, 2 WD, C/A, 4450
Hrs., 18.4R38 \$17,900
'80 JD 4440, 4 WD, C/A,
18.4x38R, Quad \$20,900



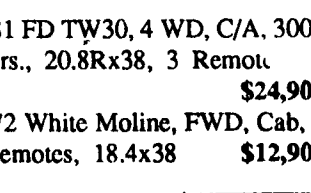
'84 MF 158F, 2 WD, Sims Cab,
1000 Hrs., 11.2x28 \$9,500
'74 IH 574, 2 WD, 2700 Hrs.,
16.9x28 \$5,950



'83 Case 2290, 4 WD, C/A, 3139
Hrs., 18.4x38R \$20,900
w/90 Loader \$26,900



'81 FD TW30, 4 WD, C/A, 3000
Hrs., 20.8Rx38, 3 Remot
\$24,900



'72 White Moline, FWD, Cab, 2
Remotes, 18.4x38 \$12,900