

**National Grain Summary**

St. Joseph, Mo.

Wednesday, Aug. 3, 1988

WHEAT PRICES HIGHER BUT SOYBEANS AND OTHER CASH GRAIN PRICES LOWER THIS TREND JUST THE OPPOSITE OF TUESDAY'S TREND. DAILY PRICE CHANGES NOT NEARLY AS ERRATIC AS RECENT WEEKS. CHINA'S BID AND SOME REBIDS ON WHEAT HELPED EXPORT DEMAND.

EXPORT NEWS: CHINA BOUGHT 300,000 METRIC TONS OF SOFT RED WINTER WHEAT FOR 88/89 MARKETING YEAR. IRAQ BOUGHT 110,000 TONNES U.S. HARD RED WINTER WHEAT UNDER EBP FOR OCTOBER SHIPMENT. ALGERIA BOUGHT 34,000 TONNES U.S. SOFT RED WHEAT UNDER EXPORT BONUS WHEAT FOR AUGUST SHIPMENT. JAPAN BOUGHT 38,000 TONNES U.S. HARD RED SPRING WHEAT FOR OCT/NOV SHIPMENT. USDA REPORTED SALES OF 200,000 TONNES OF U.S. CORN TO UNKNOWN DESTINATIONS DURING 87/88 MARKETING YEAR. SOUTH KOREA'S NATIONAL LIVESTOCK COOPERATIVES FEDERATION BOUGHT 50,000 TONNES OF U.S. NO. 3 YELLOW CORN FOR OCT/NOV SHIPMENT.

DATE CHANGE YEAR AGO 08/03/88 08/02/88 08/05/87 WHEAT: KANSAS CITY 3.70-3.74 UP 6 2.53-2.56 MINNEAPOLIS 4.22 1/4 DN 2 2.76 1/4 PORTLAND 4.15-4.17 UP 4-2 2.64-2.65 ST. LOUIS 3.63-3.66 UP 9-8 2.46-2.50.

CORN, U.S. NO. 2 YELLOW: KANSAS CITY 2.70-2.74 DN 3-4 1.56-1.59 MINNEAPOLIS 2.70 1/2 DN 3 1/2 1.42 SO. IOWA 2.71-2.77 DN 5-4 1.51-1.53 OMAHA 2.54-2.60 DN 3-1 1.46-1.48.

SOYBEANS, NO. 1 YELLOW: KANSAS CITY 8.21-8.23 DN 1 5.20-5.23 MINNEAPOLIS 8.18 1/2 UP 4 5.11 3/4 SO. IOWA 8.19-8.26 UP 1 5.18-5.20 C. ILL.

PROCESSORS 8.20 1/2-8.38 1/2 DN 6-7 5.28 1/2-5.39.

\*KANSAS CITY, US NO. 1 HARD RED WINTER WHEAT, ORDINARY PROTEIN. MINNEAPOLIS, US NO. 1 DARK NORTHERN SPRING WHEAT, 14% PROTEIN. PORTLAND, NO. 2 SOFT WHITE WHEAT, ST. LOUIS, NO. 2 SOFT RED WINTER WHEAT FUTURES CLOSE: KANSAS CITY (SEP) WHEAT 3.81 3/4 UP 5 3/4 2.57 1/4. MINNEAPOLIS (SEP) WHEAT 4.07 1/4 UP 3 2.57 1/4. CHICAGO (SEP) WHEAT 3.80 1/2 UP 5 2.60 3/4. (SEP) CORN 2.97 1/2 DN 3 1/2 1.56. (AUG) SOYBEANS 8.35 1/2 UP 6 1/2 5.16 3/4.

EXPORT: BARGE OR RAIL, PORT OF NEW ORLEANS OR NORTH TEXAS GULF. NO.1 HARD RED WINTER WHEAT ORDINARY PROTEIN 4.07 UP 6 2.81 1/4-2.85 1/4 NO.2 SOFT RED WINTER WHEAT 3.88-3.91 UP 5-7 2.68 3/4-2.70 NO.2 YELLOW CORN 3.02-3.04 DN 4-3 1.77-1.80 NO.2 YELLOW SORGHUM RAIL 4.98 DN 2 BARGE 5.11 UP 4 3.00-3.02 NO.2 YELLOW SOYBEANS 8.43-8.58 DN 11-UP 1 5.50 1/2-5.55

**Leinbach's Hay**

Shippensburg, PA  
July 30 & Aug. 2

Report supplied by Auction

TOTAL LOADS: 44.  
ALFALFA: 96.00-139.00.  
MIXED HAY: 60.00-135.00.  
TIMOTHY: 53.00-119.00.  
CLOVER: 77.00-87.00.  
OATS: 2.45 BU.  
EAR CORN: 107.00-133.00.  
GRASS: 57.50-79.00.  
STRAW: 34.00-76.00.

**Green Dragon Hay**

Ephrata, Pa.  
Friday, July 29, 1988

Report Supplied by Auction

TOTAL LOADS: 101.  
ALFALFA: 90.00-178.00.  
MIXED HAY: 61.00-147.00.  
TIMOTHY: 60.00-135.00  
BARLEY: 2.00 BU.  
OATS: 2.30-2.80 BU.  
RYE SEED: 4.00 BU.  
EAR CORN: 100.00-121.00.  
GRASS: 79.00-91.00.  
STRAW: 51.00-77.00.

**King's Hay**

Kirkwood, Pa.

Tuesday, Aug. 2, 1988

Report Supplied by Auction

TOTAL LOADS: 17.  
ALFALFA: 100.00-145.00, 1 AT 90.00, 1 AT 74.00.  
MIXED HAY: 96.00-130.00.  
TIMOTHY: 73.00-120.00.  
GRASS HAY: 102.00.  
STRAW: 70.00-85.00.  
OAT: 50.00.

**Martin's Hay**

Coatesville, PA  
Wed., Aug. 3:

TOTAL LOADS: 6.  
ALFALFA MIX: 122.50-145.00.  
TIMOTHY AND TIMOTHY ORCHARD GRASS MULCH: 70.00-75.00.  
TIMOTHY MIX: 100.00-125.00.

**Belleville Hay**

Belleville, PA  
Wednesday, Aug. 3

Report Supplied by Auction

TOTAL LOADS: 22 LDS. HAY.  
ALFALFA: 125.00-180.00.  
MIXED HAY: 62.50-120.00.  
EAR CORN: 5 AT 125.00-140.00.  
STRAW: 4 AT 65.00-75.00.

**North Jersey Market**

Hackettstown, N.J.

Tues., Aug. 2, 1988

Hay—Straw & Grain Report  
GRASS HAY 2.10 BALE

**Keister's Hay**

Middleburg, PA  
Tuesday, Aug. 2

Report supplied by auction  
TOTAL LOADS: 9 LDS. HAY.  
ALFALFA: 130.00-145.00.  
MIXED HAY: 50.00-127.50.  
EAR CORN: 5 AT 122.50-130.00.

**Leesport**

**Livestock Auction**

Leesport, Pa.

Wednesday, August 3, 1988

Report Supplied by PDA

CATTLE 204...PDA... Supply included 18 head feeder cattle... Compared to last Wednesday's market: Slaughter steers steady to \$1 lower. Low to Average Choice 1000/1450 lbs. sl. steers 64.75-67, Select 60-64.25; Choice holsteins 58.25-61.50, couple to 64.00, Select 55.50-57.50, few Standard 55.75-56.75. Few Choice sl. heifers 58.85-65, few Choice holsteins 57.10-60.25, few Select 57.75-60.25. Breaking Utility & Commercial sl. cows 45.25-48.25, Cutter & Bon. Utility 44.75-47, Canner & Low Cutter 41.50-44.75, Shells down to 37.00. Few Choice sl. bullocks 59.50-66, few Select 56.25-57.10. Yield Grade No. 1, 1160/1930 lbs. sl. bulls 52.50-58.50, one 61.75. Feeder Cattle: Few Large Frame No. 2, 850/930 lbs. heifers 52.00-54.60.

CALVES 155... Couple Choice vealers 93.00-94, Standard & Good 75/100 lbs. 67.00-77.00, Utility 60/90 lbs. 55.00-68.00. Farm Calves: Holstein Bulls 90/130 lbs. 76.00-138, few 80/85 lbs. 73.00-75.00; Hol. Heifers 75/100 lbs. 82.50-105.00. Few Beef cross bulls & heifers 75/100 lbs. 82.50-112.50.

HOGS 325... Barrows and gilts \$1 to \$3 higher. US No. 1-2 225/240 lbs. 49.10-51, 1-3 220/255 lbs. 47.00-50, lot 50.60, one lot 2-3 210/235 lbs. 48.75, lot 2-4 300 lbs. 37.25, lot 1-3 189 lbs. 40.00. US No. 1-3 300/625 lbs. sows 29.50-33.50. Boars 22.00-26.50.

FEEDER PIGS 66... Few Lots US No. 1-3 35/40 lbs. feeder pigs 64.00-66.00 --- all per hundredweight.

SHEEP 25... Few Good & Choice 70/120 lbs. spring slaughter lambs 55.00-68.00. Few Slaughter ewes 17.00-23.00.

GOATS 22... Few Large 35.00-55.00, Medium 20.00-35.00 --- all per head.

**Carlisle Livestock Market**

Carlisle, Pa.

Tuesday, Aug. 2, 1988

CATTLE: STEERS: GOOD-LOW CHOICE 64.00-66.00; MEDIUM 52.25-59.25 HOLSTEINS- MEDIUM-GOOD 51.00-59.00

HEIFERS: MEDIUM-GOOD HOLSTEINS 48.00-54.50.

COWS: EARLYBIRD PENS 2.00 HIGHER. HIGH YIELD 48.00-49.10; GOOD 46.75-47.85; MEDIUM 43.75-46.50; BIG MIDDLE 43.00-46.85;

SHELLY 41.00 & DOWN. FAT BULLS-MEDIUM-GOOD 50.25-57.25.

FEEDER CATTLE: STEERS (300-550 LB.) MOSTLY HOLSTEINS OFFERED. MEDIUM-GOOD 60.00-73.00. STEERS (600-850 LB.) MOSTLY HOLSTEINS OFFERED. GOOD 63.00-65.50; MEDIUM 49.00-57.00. HEIFERS (ALL WEIGHTS) CHOICE 80.00-88.00; GOOD 72.00-79.00; MEDIUM 67.50-70.00. BULLS (ALL WEIGHTS) CHOICE 80.00-87.00; MEDIUM-GOOD 54.00-62.00.

VEAL CALVES: CHOICE 90.00-100.00; GOOD 80.00-89.00; MEDIUM 74.00-79.00; LIGHT/WEAK 71.00 & DOWN; FARM BULLS 100.00-117.00.

HOGS: US NO. 1-3 210-250 LBS. 45.50-47.00, 2 & 3'S (ALL WEIGHTS) 43.00-45.25.

SOWS: (400-700 LB.) 26.50-30.00; (2 & 3'S) 21.00-25.50.

BOARS: HEAVY 21.25-26.00; UNDER 300 LBS. 31.00-37.00.

FEEDER PIGS: (BY THE HD.) (20-45 LBS. 15.00-28.00).

SHEEP: LAMBS GOOD (80-100 LB.) 53.00-61.00; MEDIUM 47.00-52.00.

EWES 19.00-29.00. GOATS (L.G.) 55.00-60.00 (HD); SM./MED. 18.00-49.00 (HD).

NOTE: SALE EVERY TUESDAY EVENING 7:00 P.M. LIVESTOCK, 5:30 RABBITS, POULTRY & EGGS.

**Frederick Livestock Sales**

Frederick, Md.

Monday, Aug. 1, 1988

Report Supplied by Auction

BUTCHER COWS: STEADY TO 1.00 LOWER. GOOD 45.00-47.00; STANDARD & UTILITY 42.00-44.50; CANNERS 39.00-41.00; SHELLY 38.00 DOWN. BULLS: GOOD 53.00-55.00. STEERS: SELECT TO 60.00; STANDARD 57.00-59.00. HEIFERS: SELECT TO CHOICE 62.00-64.50; MEDIUM 55.00-60.00.

BUTCHER HOGS: STEADY. 225-255 LBS. 45.00-45.75; 190-200 LBS. 38.00-40.00. SOWS 300-425 LBS. 30.00-34.50, 500-585 LBS. 26.00-29.00.

VEAL CALVES: MOSTLY STEADY. GOOD-CHOICE 85.00-94.00; STANDARD 76.00-84.00; STOCKY & THIN 70.00-75.00; LIGHT CALVES 80-100 LBS. 63.00-72.00; 60-80 LBS. 58.00-62.00; WEAK CALVES 55.00 DOWN.

CALVES RETURNING TO FARM: STEADY TO 2.00 HIGHER. HOLSTEIN HEIFERS: 95-120 LBS. 85.00-97.00. HOLSTEIN BULLS: 90-100 LBS. 85.00-100.00; 100-115 LBS. 110.00-122.00.

GOATS: MEDIUM 33.00-50.00, STOCK CATTLE: FEW OFFERED STEADY PRICES. STEERS 300-500 LBS. GOOD 72.00-76.00; 650-700 LBS. 65.00-70.00. HEIFERS 300-500 LBS. GOOD 68.00-76.00; MED. 55.00-62.00. SPRINGING HEIFERS 70.00-86.00.

PIGS & SHOATS: GOOD RUN - STEADY PRICES. BY THE HD.: 15-25 LBS. 12.00-18.00; 30-40 LBS. 18.00-28.00; ONE LOT 80 LBS. AT 34.00.

**FEED INGREDIENTS**

**We Want To Help You Reduce Your Feed Costs**

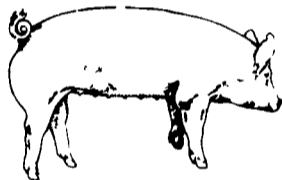
- WE SUPPLY
- 48% SOYBEAN MEAL
- ROASTED SOYBEANS
- DRIED CORN DISTILLERS
- MIXES

Call Us Today...

**HERSHEY'S SERVICES**

(717) 653 8783

R.D. #1 Box 139  
Marietta, PA 17547



**EMERY'S BUYING STATION**

**OPEN TO RECEIVE YOUR MARKET HOGS**

**AT THE GREEN DRAGON MARKET  
RD 4, EPHRATA, PA 17522  
1 MILE NORTH OF EPHRATA  
ON NORTH STATE STREET.**

**HOURS: MONDAY, TUESDAY, and  
WEDNESDAY 7:00 A.M. to 11:30 A.M.**

**215-458-5677 Residence  
717-733-9648 Office**

**YOU ARE PAID FOR YOUR HOGS IMMEDIATELY**

Ken & Lois Emery, Proprietors



**ATTENTION FARMERS**

**EVERY MONDAY  
HATFIELD PACKING CO. and  
MOYER PACKING CO.**

**Will Receive Your Hogs and Cattle at the  
DANVILLE LIVESTOCK MARKET  
RD 4, Danville, PA**

- We will receive your hogs from 8 AM to 12 Noon every Monday. Your hogs will be weighed and paid for immediately.
- We will also accept your sows & boars.
- Your cattle will be received from 12:30 to 5 P.M. We will either pay you for your cattle immediately or you may sell them dressed weight.
- There will not be a commission or yardage fee deducted from your check.
- You may call our office Monday morning and we will be able to tell you the base price for hogs for the day.

**MELVIN M. LEHMAN - Owner  
Danville Buying Station  
Phone: 717-275-2880**

**ATTENTION FARMERS**

**The New Way To Market Your Livestock  
HATFIELD PACKING CO. AND MOYER PACKING CO.  
Will Receive Hogs AND Will Receive Cattle**

**At The  
BLAIR-BEDFORD BUYING STATION  
RD 1 Martinsburg, Pa**

**MONDAYS - Hogs 7:30 AM to 12 Noon  
Cattle & Calves 7:30 AM to 4 PM  
THURSDAYS - Cattle & Calves  
7:30 AM to 4 PM**

- No commission or yardage fees deducted from check
- Livestock weighed and paid for immediately
- You may call our office sale day for prices

**DALE R. HOOVER - Owner  
Business 814-793-3077  
Residence 814-793-2657**

**OUR BUSINESS IS SERVICE TO FARMERS**

**Let us help you build a successful marketing program!**



**Call:  
717-761-2740  
800-382-1356**

**Grains & Livestock**

- Forward Contracting
- Hedging Services

**CFS PFA COMMODITY FUTURES SERVICE, INC.**