

**National Grain Market**

St. Joseph, Mo.

Wednesday, July 27, 1988

WHEAT PRICES FINALLY TURNED AROUND FROM THE DOWNWARD TREND AND POSTED PRICE ADVANCES. SOYBEANS AND OTHER GRAINS CONTINUED TO WORK LOWER, BUT DECLINES NOT AS DRASTIC AS IN RECENT DAYS.

EXPORT NEWS: JAPANESE FOOD AGENCY OVERNIGHT BOUGHT 56,000 TONNES OF U.S. WHEAT FOR SEPT SHIPMENT. JAMAICA BOUGHT 23,000 TONNES U.S. CORN UNDER PL480 FOR AUGUST SHIPMENT.

DATE CHANGE YEAR AGO 07/27/88 07/26/88 07/29/87 WHEAT: KANSAS CITY 3.56-3.61 UP 10-8 2.52-2.55 MINNEAPOLIS 4.08 UP 12 1/2 2.78 1/4 PORTLAND 4.02-4.06 UP 14-11 2.73-2.74 ST. LOUIS 3.35-3.38 UP 16-13 2.45-2.49.

CORN, U.S. NO. 2 YELLOW: KANSAS CITY 2.50-2.55 DN 8-9 1.61-1.66 MINNEAPOLIS 2.46 3/4 DN 1 3/4 1.53 1/4 SO. IOWA 2.50-2.56 UP 5-2 1/2 1.61-1.63 OMAHA 2.35-2.39 UP 1-2 1.56 SOYBEANS, NO. 1 YELLOW: KANSAS CITY 7.25-7.36 DN 1-NC 5.40-5.50 MINNEAPOLIS 7.16 1/2 UP 13 5.32 1/2 SO. IOWA 7.17-7.26 UP 40-15 5.39-5.44 C. ILL. PROCESSORS 7.31 1/2-7.50 NC 5.46 1/2-5.54 1/2.

\*KANSAS CITY, US NO. 1 HARD RED WINTER WHEAT, ORDINARY PROTEIN. MINNEAPOLIS, US NO. 1 DARK NORTHERN SPRING WHEAT, 14% PROTEIN. PORTLAND, NO. 2 SOFT WHITE WHEAT, ST. LOUIS, NO. 2 SOFT RED WINTER WHEAT.

FUTURES CLOSE: KANSAS CITY (SEP) WHEAT 3.68 1/2 UP 9 1/2 2.54 1/4. MINNEAPOLIS (SEP) WHEAT 3.93 UP 7 1/2 2.53 1/4.

CHICAGO (SEP) WHEAT 3 61 1/2 UP 9 3/4 2.57.

(SEP) CORN 2.79 3/4 DN 7 3/4 1.62 1/4. (AUG) SOYBEANS 7.53 1/2 DN 2 5.34 1/2.

EXPORT: BARGE OR RAIL, PORT OF NEW ORLEANS OR NORTH TEXAS GULF. NO.1 HARD RED WINTER WHEAT ORDINARY PROTEIN 3.91 UP 10 2.81 1/4 NO.2 SOFT RED WINTER WHEAT 3.62 UP 12-11 2.65-2.67 NO.2 YELLOW CORN 2.80 DN 6-11 1.87-1.90 NO.2 YELLOW SORGHUM RAIL 4.59 DN 16 BARGE 4.64 DN 16 3.23-3.25 NO.2 YELLOW SOYBEANS 7.52 DN 4-8 5.70-5.74.

**Westminster Hay**

Westminster, Md.

Tuesday, July 26, 1988

Report Supplied by Auction

TOTAL LOADS: 14 LDS HAY. TIMOTHY: 80.00-100.00 TON. TIMOTHY AND CLOVER MIX: 106.00, SOME 1.00-1.90 BALE. ORCHARD GRASS: 1.00 BALE. MEADOW GRASS: 1.00 BALE. STRAW: .80-1.15 BALE; \$60/TON.

**King's Hay**

Kirkwood, Pa.

Tuesday, July 26, 1988

Report Supplied by Auction

TOTAL LOADS: 20. ALFALFA: 108.00-160.00. TIMOTHY & TIMOTHY MIX: 92.00-140.00. CLOVER MIX: 97.00. EAR CORN: 124.00 & 132.00. GRASS AND GRASS MIX: 92.00-103.00. STRAW: 75.00-86.00, 1 LOAD WET & MOLDY 32.00.

**Keister's Hay**

Middleburg, PA

Tuesday, July 26

Report supplied by auction

TOTAL LOADS: 13 HAY. ALFALFA: 140.00-150.00. MIXED HAY: 50.00-130.00. EAR CORN: 6 AT 127.00-132.50. STRAW: OAT 1 LOAD 2.40/BU.

**Leinbach's Hay**

Shippensburg, PA

July 23 & 26

Report supplied by Auction

TOTAL LOADS: 30. ALFALFA: 97.00-138.00. MIXED HAY: 59.00-137.00. TIMOTHY: 55.00-120.00. EAR CORN: 112.00-130.00. GRASS: 52.00-94.00. STRAW: 51.00-61.00.

**Belleville Hay**

Belleville, PA

Wednesday, July 27

Report Supplied by Auction

TOTAL LOADS: 30. ALFALFA: 115.00-162.50. MIXED HAY: 40.00-115.00. EAR CORN: 122.50-130.00. STRAW: 65.00-72.50.

**New Wilmington Livestock Auction**

N. Wilmington, Pa.

Monday, July 25, 1988

Report Supplied by PDA

CATTLE 189. PDA...Compared with last Monday's market: Slaughter cows \$1 to \$2 higher. Couple Choice sl. steers 64.00&66.25, one Standard 53.25 Couple Choice sl. heifers 64.00&65.25, few Utility 46.75-48.75. Breaking Utility & Commercial sl cows 46.50-49, couple 50&51.50, low yielding down to 38.00, Cutter & Boning Utility 44.00-48.50, Canner & Low Cutter 39.00-44.25, Shells down to 25.00. Yield Grade No. 1, 1110/1670 lbs. sl. bulls 53.75-58.00, one No. 2, 1330 lbs. 51.00. Feeder Cattle: Medium & Large Frame No. 1, 315/490 lbs. steers 60.50-73.00. Few

Medium Frame 350/490 lbs. heifers 59.00-63.00, Medium 1-2, 500/680 lbs. 45.00-58.25.

CALVES 303...Few Choice vealers 100.00-113, Good 80.00-95, Standard & Good 90/125 lbs. 70.00-80, 60/85 lbs. 57.50-75, lot Utility 55 lbs. 50.00. Farm Calves: Holstein Bulls 95/145 lbs. 100.00-135, some down to 80.00; Hol. Heifers 90/120 lbs. 75.00-97.50. Beef cross bulls & heifers 75/160 lbs. 72.00-100, 160/260 lbs. 65.00-82.00.

HOGS 400...Barrows and gilts \$3 higher. US No. 1-2 230/250 lbs. 48.00-48.60, 1-3 210/260 lbs. 46.75-48.10, 2-3 225/290 lbs. 44.50-46.75, 1-3 195/205 lbs. 43.25-46.25. Sows mostly \$4 higher. US No. 1-3 280/525 lbs. sows 32.50-39.50, 2-3 485/610 lbs. 25.00-30.00. Boars 26.00-28.00.

FEEDER PIGS 43...US No. 1-3 20/35 lbs. feeder pigs 13.00-19.00, few 45/55 lbs. 20.00-39.00 --- per head.

SHEEP 151...High Choice & Prime 70/110 lbs. spring slaughter lambs 70.00-78, Choice 65/110 lbs. 60.00-69.00; Good & Choice 65/85 lbs. feeder lambs 41.00-55.00. Slaughter ewes 10.00-26.00

GOATS 31...Medium & Large 15.00-41.00, few Kids 12.00-16.00 --- all per head.

**Grantsville Livestock**

Grantsville, Maryland

Saturday, July 23, 1988

MED 30-35, LARGE 50-58 HOGS: TOP BARROWS & GILTS 45.50-47.25; HEAVY BUTCHER 38.00-46.25; LIGHT BUTCHER 33.00-45.00; BUTCHER SOWS 24.00-37.00; FEEDER SHOATS 5.00-25.00.

VEAL: GOOD 80.00-85.00; STANDARD 65.00-75.00; UTILITY 45.00-50.00, BULL CALVES 1.00-1.15 SHEEP & LAMBS: GOOD 55.00-60.00; UTILITY 48.00-50.00, SLAUGHTER EWES 18.00-25.00.

SLAUGHTER CATTLE. STEERS: GOOD 63.00-70.00; STANDARD 60.00-62.00; UTILITY 55.00-58.00.

HEIFERS: GOOD 62.00-65.75; STANDARD 55.00-60.00; UTILITY 48.00-52.00.

COWS: COMMERCIAL 42.50-49.00; UTILITY 38.00-41.00; CANNER & CUTTER 32.00-DOWN.

BULLS: COMMERCIAL & GOOD 50.00-55.00; CUTTER & UTILITY 45.00-48.00.

STOCK-FEEDER CATTLE: GOOD 65.00-75.00; MEDIUM 55.00-60.00.

STEER CALVES: GOOD 80.00-90.00; MEDIUM 60.00-75.00.

HEIFER CALVES: GOOD 62.00-75.00; MEDIUM 50.00-60.00.

**Valley Livestock**

Athens, Pa.

Monday, July 25, 1988

Report supplied by auction

HOLSTEIN HFR. CALVES TO 117.50. VEAL CALVES TO 84.00. VEALER BULL CALVES TO 147.50. SLAUGHTER CALVES 65.00-75.00. GRASSERS & FEEDERS 40.00-60.00. LAMBS 55.00-92.50.

SHEEP 15.00-23.00. HOGS, 200 TO 250 LBS. 36.00-48.00. SOWS 25.00-30.50.

BOARS: 23.00-29.00. PIGS 10.00-32.00.

HEIFERS 42.00-49.75. STEERS 48.00-57.00.

STEERS, FEEDER 50.00-70.00. BULLS 48.00-56.75.

COWS, UTILITY 46.00-49.75, TOP 51.00.

COWS, MEDIUM 43.00-47.00. COWS, POOR OR SMALL 35.00-42.00.

HORSES TO 440.00. GOATS TO 61.50

REMARKS CATTLE MKT. STEADY TO ACTIVE, CALF MKT. SMALL, CALVES CHEAPER. GOOD SALE, PRICES GOOD.

FEEDER SALE 1ST MONDAY OF EACH MONTH, DAIRY SALE 3RD THURSDAY OF EACH MONTH

**North Jersey Livestock**

Hackettstown, NJ

Tues., July 26, 1988

Report supplied by auction

CALVES .20-1.20 COWS .37-.49% . EASY COWS 12% -.45.

HEIFERS .45-.64% BULLS .44-.62% STEERS .41% -.65.

HOGS .20-.41. ROASTING PIGS, EACH 25.00-28.00.

BOARS .23-.25. SOWS .26-.29% . SHEEP .23-.50.

LAMBS, EACH 20.00-54.00. LAMBS, PER LB. .39-.89.

GOATS, EACH 30.00-110.00. KIDS, EACH 5.00-56.00. TOTAL: 1,181.

**CRIPPLED AND DISABLED**

**Cows, Steers & Bulls For Slaughter Under USDA Inspection**

Call Wayne Taylor

**717-866-6289  
215-286-9400**

**Lebanon, Berks, Lancaster & Chester Counties**



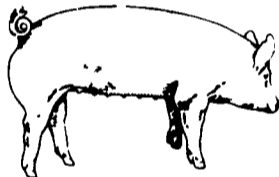
**ATTENTION FARMERS**

**EVERY MONDAY HATFIELD PACKING CO. and MOYER PACKING CO.**

**Will Receive Your Hogs and Cattle at the DANVILLE LIVESTOCK MARKET RD 4, Danville, PA**

- We will receive your hogs from 8 AM to 12 Noon every Monday. Your hogs will be weighed and paid for immediately.
- We will also accept your sows & boars.
- Your cattle will be received from 12:30 to 5 P.M. We will either pay you for your cattle immediately or you may sell them dressed weight.
- There will not be a commission or yardage fee deducted from your check.
- You may call our office Monday morning and we will be able to tell you the base price for hogs for the day.

**MELVIN M. LEHMAN - Owner  
Danville Buying Station  
Phone: 717-275-2880**



**EMERY'S BUYING STATION**

**OPEN TO RECEIVE YOUR MARKET HOGS**

**AT THE GREEN DRAGON MARKET RD 4, EPHRATA, PA 17522 1 MILE NORTH OF EPHRATA ON NORTH STATE STREET.**

**HOURS: MONDAY, TUESDAY, and WEDNESDAY 7:00 A.M. to 11:30 A.M.**

**215-458-5677 Residence  
717-733-9648 Office**

**YOU ARE PAID FOR YOUR HOGS IMMEDIATELY**

Ken & Lois Emery, Proprietors

**ATTENTION FARMERS**

**The New Way To Market Your Livestock HATFIELD PACKING CO. AND MOYER PACKING CO. Will Receive Hogs Will Receive Cattle**

**At The BLAIR-BEDFORD BUYING STATION RD 1 Martinsburg, Pa**

**MONDAYS - Hogs 7:30 AM to 12 Noon Cattle & Calves 7:30 AM to 4 PM THURSDAYS - Cattle & Calves 7:30 AM to 4 PM**

- No commission or yardage fees deducted from check
- Livestock weighed and paid for immediately
- You may call our office sale day for prices

**DALE R. HOOVER - Owner  
Business 814-793-3077  
Residence 814-793-2657**

**GRAIN & LIVESTOCK HEDGING SERVICES WITH**

**EF Hutton**

Jim Rohrbaugh, Account Executive  
E.F. Hutton & Company Inc.  
P.O. Box 3151, Harrisburg, PA 17105  
(717) 763-1611  
(800) 822-9553 In-state  
(800) 334-3119 Out-of-state

**KING'S AUCTION KIRKWOOD Hay, Straw and Grain Auction EVERY TUESDAY**

12:00 Located Rt. 472 5 miles south of Quarryville or 6 miles north of Oxford corner of Rt. 472 and Noble Road at Rouse Tobacco Station.

Lloyd H. Kreider, Auctioneer AU-000513L

No out of state checks ALL TRUCKERS AND FARMERS WELCOME

**OUR BUSINESS IS SERVICE TO FARMERS**

**Let us help you build a successful marketing program!**

Call:

**717-761-2740  
800-382-1356**



**Grains & Livestock**

- Forward Contracting • Hedging Services

**CFS PFA COMMODITY FUTURES SERVICE, INC.**