

The SOLLENBERGER SILOS "BIG JIM SYSTEM"



The Big Jim TOP UNLOAD, BOTTOM DISCHARGE silage system lets you enjoy bottom delivery without the high cost. The feed drops by gravity down a hole formed in the center of the silage. So you never have to climb a silo to change doors, you don't have to raise the unloader to fill, and you will have a clean chute because the silage or haylage doesn't drop down the chute.

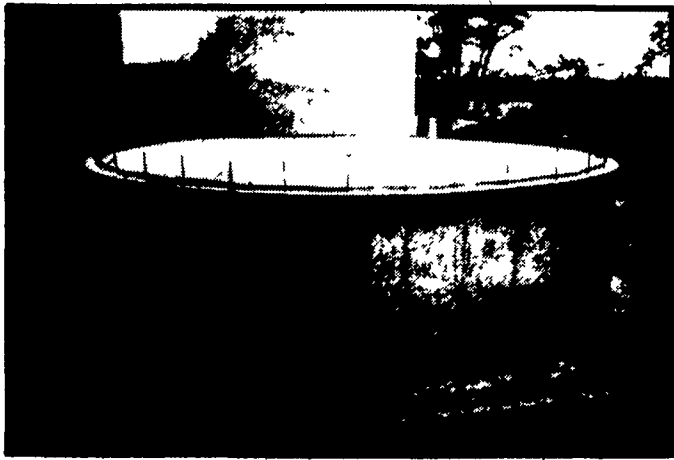
The simple design eliminates belts, pulleys, and adjustments. Since there's no need for an impeller, the full horsepower can be used more efficiently for big volume, fast feeding.

The Big Jim System is now 30 years old, and the many improvements over the years have made it a system with very low maintenance costs and long life.

Sollenberger Silos Corp. is now 80 years old, and our recent improvements on the Big Jim silo make the "Sollenberger Silos Big Jim System" something you've just got to see.

We will invite you to attend a field day at a couple of farms with the Big Jim silos; but until details are complete, please study the pictures, ask us for some free literature, and ask for names of farmers who have taken advantage of this "innovation in silage storage and feeding."

Now, more than ever, you need to store your precious feed in a poured concrete silo! The light colored, solid 6" concrete wall reflects the sun's rays and practically eliminates heat damage. Some structures magnify the heat so that your stored feed, especially the protein, is severely affected.



Big Jim silo base with concrete floor, 5' off the ground with easy access tunnel. The silo is then built on the base.

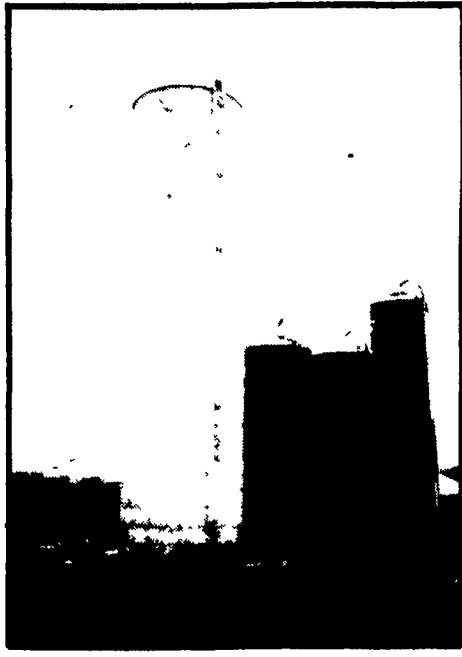
For Sale:
A good used
24' Big Jim
unloader.
Call Bob
for details.



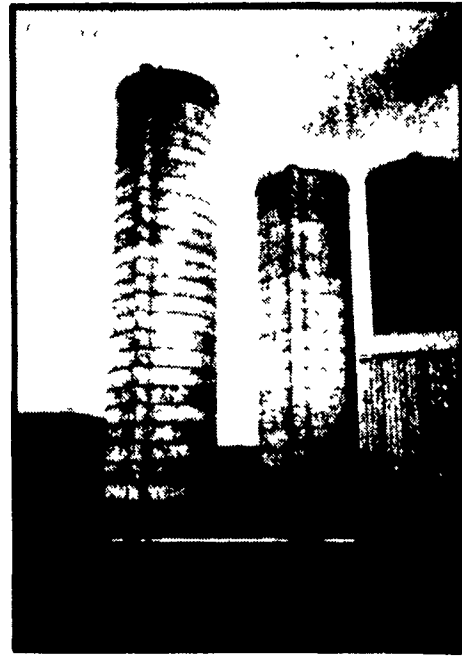
The silo wall is a full 6" thick with the base wall 12" thick. Both are heavily reinforced with horizontal and vertical steel.



The Sollenberger Silo is equipped with double-ply redwood doors - "largest in the industry" - and hot-dipped galvanized hinges and steps, for long life and low maintenance.



30'x124' Silo with Big Jim holds over 3000 tons corn Silage.



24'x104' Silo with Big Jim holds over 1600 tons corn silage.

We want to help! If delayed payments, or extended credit would be of interest to you, please give us a call. We would like to sit down with you, discuss your silo needs, and how we can be of help during these critical times.

Don't Forget -- For All Your Storage Needs - Feed - Manure - Water - And Other Bulk Items - Contact Sollenberger Silos Corp. Soon.
* Precast panels for silage and/or manure storage
* Poured circular manure tanks
* Precast feed bunk - cattleguards
** "Ask Mike about our all new precast panels for liquid manure storage"

Sollenberger Silos Corp.
Box N, Chambersburg, PA 17201

Name _____
Address _____
City/State _____
Zip _____ Phone _____
Best Time To Call _____
County _____

- Please send information on:
- 1. Bottom Unloading Concrete Silos
 - 2. Top Unloading Concrete Silos
 - 3. Upright Bunker Silos
 - 4. Manure Pits
 - 5. Feed Bunks
 - 6. Cattleguards
 - 7. Hog Slats
 - 8. Industrial Silos/Tanks

Sollenberger Silos Corp.

A Nitterhouse Company
Box N Chambersburg, PA 17201 (717) 264-9588

SINCE BEFORE 1910

Office Number - 717-264-9588

For Upright Silos Call Bob Francis 717-532-6848

For Bunker Silos & Manure Systems Call Mike Hair 717-263-0792