

Westminster Livestock Auction

Hagerstown, Md.
Tuesday, July 19, 1988
Report supplied by auction

SLAUGHTER COWS: HIGH YIELD 46.00-47.50; UTILITY 43.00-46.00; CANNERS 41.00-44.00; SHELLY 41.00-DOWN. BULLS- (1) GD. 1930 LB. AT 54.00; (1) 1515 LBS. AT 48.00. FED STEERS- CHOICE 62.00-64.00; SELECT 55.00; SELECT 750 LB. TO 53.00. FED HEIFERS- LO-CHOICE (1) 230 LB. @ 90.00; GOOD 80.00-87.00; STANDARD 64.00-75.00; KILLERS 80-100 LBS. 73.00-78.00, 50-80 LBS. 67.00-74.00. FARM CALVES- HOLSTEIN BULLS 100-125 LBS. 110.00-123.00; 90-95 LBS. 80.00-110.00. HOLSTEIN HEIFERS- 85.00-90.00; BUTCHER HOGS- US #1&3 215-240 LBS. 44.50-45.00, 290-310 LBS. 36.25-38.50, 195-210 LBS. 41.00-43.50; SOWS- 300-500 LBS. 28.00-32.50; 500-650 LBS. 26.00-29.50; BOARS 500-670 LBS. 25.25-26.25.
STOCK CATTLE: STEERS- 400-500 LBS. 71.00-74.00 (1) 860 LBS. AT 65.50. HEIFERS- HOLSTEINS 200-300 LBS. 54.00-61.00; BEEF TYPE 400-600 LBS. 56.00-66.00, 700-900 LBS. 45.00-53.00. BULLS- 400-500 LBS. 58.00-72.00; 800-900 LBS. 49.50-55.00. LAMBS- 90-110 LBS. CHOICE 56.00-64.00, GD. 51.00-55.00; 125-165 LBS. 37.00-46.50; 60-90 LBS. 60.00-72.00; 45-55 LBS. 69.00-80.00. SHEEP- 85-200 LBS. 19.00-28.00; GOATS- MD-LG. 40.00-50.00; SM-MD. 25.00-40.00; SM. 10.00-25.00. PIGS & SIOATS- BY THE HEAD 20-30 LBS. 12.00-26.00, 30-50 LBS. 16.00-31.00; 60-80 LBS. 24.00-35.00. BY THE LB- 145-150 LBS. 45.00-47.50, 105-130 LBS. 30.00-40.00. STOCK BOARS 195-225 LBS. 25.00-27.50.

Mercer Livestock Auction

Mercer, PA
Tuesday, July 19, 1988

CATTLE 259...PDA...Compared with last Tuesday's market: Slaughter steers \$2 to \$3 lower; Cows mostly \$2 higher. Few High Choice sl. steers 65
85-66.60, Choice 62-65.60, Select 58.00-62, Standard 53.00-57, Utility 48.50-51.00. Choice sl. heifers 59-64.10, Select 56.50-59, few Standard 49.00-54, few Utility 44-50.00. Breaking Utility & Commercial sl. cows 44.25-48.00, Cutter & Boning Utility 42-45.50, Canner & Low Cutter 37.50-42.50, Shells down to 25.00. Yield Grade No. 1, 1200/2020 lbs. sl. bulls 53.00-61.60, few #2, 900/1400 lbs. 45.00-49.00. Feeder Cattle: Few Medium Frame No. 1, 400/600 lbs. steers 67.00-69, few #2, 600 lbs. 53.50. Medium Frame No. 1, 450/600 lbs. heifers 55.00-61, few Large #2, 500/800 lbs. 43.00-46.00. Medium Frame #1, 600/800 lbs. bulls 54.00-59.50.
CALVES 121...Choice vealer, one 93.00, few Good 64.00-79, Standard and Good 90/120 lbs. 75.00-85, 60/85 lbs. 70.00-78.00. Farm Calves: Holstein Bulls 90/120 lbs. 100.00-141.00; Beef cross bulls & heifers 85/115 lbs. 90.00-110.00.
HOGS 174...Barrows and gilts .50 to \$1 higher. US No. 1-2 220/250 lbs. 45.00-46.25, 1-3 220/245 lbs. 44.00-45, few 2-3 260/280 lbs. 42.00-43, few 1-3 160/190 lbs. 40.00-43.00. Few US No. 1-3 350/550 lbs. sows 28.00-32.00, few 2-3 350/600 lbs. 23.00-26.00. Boars 20.00-23.00.
FEEDER PIGS 2...No Market Test.
SHEEP 14...Few High Choice 73/79 lbs. spring slaughter lambs 55.00-59.00. Few Slaughter sheep 9.00-12.00.
GOATS 2...Medium 22.00 and 23.00 - per head.

Special Sale Work Horses, Driving Horses & Mules

New Holland Sales Stables
New Holland, PA
Friday, July 8, 1988
Report Supplied by Auction

253 HEAD.
DRIVING AS FOLLOWS: NY 435.00-725.00; NJ 675.00-1225.00; PA 650.00-1375.00; OH 675.00-1475.00; ME 500.00-825.00; PA 650.00-1150.00.
LOCAL DRIVING: 400.00-1450.00.
WORK HORSES, PAIRS, 1100.00-2350.00; SINGLES, 400.00-775.00; MULES, SINGLES, 375.00-775.00.

New Wilmington Livestock Auction

N. Wilmington, PA
Monday, July 18, 1988

CATTLE 308...PDA... Compared with last Monday's market: Slaughter cows \$2 to \$3 higher. Couple Choice sl. steers 63.50&64, couple Select 59.75&60, few Standard 53.00-57.25. Few Choice sl. heifers 61.00-64.75, few Select 55.00-60, Standard 47.50-53.25. Breaking Utility & Commercial sl. cows 44.00-48.25, one 48.25, low yielding down to 39.75, Cutter & Boning Utility 42.50-46.50, Canner & Low Cutter 38.00-43, Shells down to 34.00. Yield Grade No. 1, 1100/2060 lbs. sl. bulls 50-57.50, few No. 2, 890/1225 lbs 45.00-47.50. Feeder Cattle: Medium Frame No. 1-2, 385/605 lbs. heifers 52.00-59.00, 620/830 lbs. 45.00-53.00, lot 135/185 lbs 86.00.
CALVES 273...Few Choice vealers 80.00-90, one 99.00, few Good 69.00-85, Standard & Good 90/120 lbs 74.00-83, 60/85 lbs. 70.00-77, lot Utility 53 lbs.

Peoria Cattle

Peoria, IL
Thurs., July 21, 1988

TRADING MODERATE. COMPARED WITH LAST WEEK'S CLOSE, SLAUGHTER STEERS AND HEIFERS CLOSED .50 TO 2.00 LOWER, MOSTLY 1.00 TO 1.50 LOWER. ALL REPORTED SALES MONDAY WITH NOT ENOUGH OF ANY CLASS OFFERED AFTER THAT FOR A MARKET TEST. SLAUGHTER COWS CLOSED FIRM TO 3.00 HIGHER. BULLS WERE NOT WELL TESTED. SUPPLY MAINLY SELECT TO LOW CHOICE SLAUGHTER STEERS AND HEIFERS WITH ABOUT 7% COWS. ESTIMATED RECEIPTS THIS WEEK 1300, COMPARED WITH ACTUAL RECEIPTS OF 1755 LAST WEEK AND 1623 A YEAR AGO.

SLAUGHTER CLASSES: STEERS: CHOICE 2-4, MOSTLY 3, 1100-1350 LBS. 64.00-65.50 950-1100 LBS. 62.00-64.00 SELECT & CHOICE 2-3, 1000-1200 LBS. 60.00-63.00 SELECT 2-3, 900-1100 LBS. 58.00-62.00
HEIFERS: CHOICE 2-4, MOSTLY 3, 1000-1200 LBS. 62.50-65.50 850-1000 LBS. 60.00-62.50 SELECT & CHOICE 2-3, 900-1100 LBS. 60.00-63.00 SELECT 2-3, 800-1000 LBS. 56.00-61.00
COWS: BREAKING UTILITY AND COMMERCIAL 2-3, 44.00-45.00 CUTTER AND BONING UTILITY 1-2, 41.00-47.00 CANNER AND LOW CUTTER 1-2, 40.00-43.00
BULLS: YIELD GRADE 1-2, 1500-1900 LBS. 52.00-56.00

Morrison Cove Livestock

Martinsburg, Pa.
Monday, July 18, 1988
Report supplied by auction

CATTLE: 225.
STEERS: CHOICE 60.50-63.25; GOOD 57.00-60.25; STANDARD 49.50-55.75. HEIFERS- CHOICE 60.00-62.75; GOOD- 52.00-59.25 COWS- UTILITY & COMMERCIAL- 47.75-50.25; CUTTERS 45.75-58.25, CANNER & LOW CUTTER- 34.00-44.75. BULLOCKS- GOOD & CHOICE 60.00-61.75. BULLS- YIELD GRADE #1 52.00-58.75. FEEDER CATTLE- STEERS, GOOD 56.00-65.00, STANDARD 48.50-55.00; BULLS 54.00-60.00; STANDARD 42.50-53.00; HEIFERS, GOOD 52.00-60.50, STAN-

DARD 42.00-51.50.
CALVES: 322. PRIME .92-1.01%; CHOICE 82.00-88.50; GOOD 75.00-81.00; STANDARD & GOOD 72.00-84.50; 90-110 LBS. 82.00-94.00; 65-90 LBS. 74.00-88.50; HOLST. BULL CALVES, 90-130 LBS. 95.00-132.50; HOLST. HEIFER CALVES, 90-130 LBS. 90.00-104.50.
HOGS: 340. US#1,2 47.75-48.25; US#1-3 44.00-46.75; SOWS 1-3 26.00-30.25; BOARS 23.50-28.00.
FEEDER PIGS: 47. 20-35 LBS. PER HD. 16.00-24.50; 35-50 LBS. PER HD. 27.00-35.00.
SHEEP: CHOICE LAMBS 60.00-70.00; GOOD 51.00-54.75; SLAUGHTER EWES 24.50-38.50.
GOATS: 59 PER HD. 15.00-61.00. MIXED HAY: 1 PER TON 100.00.

Frederick Livestock Sales

Frederick, Md.
Monday, July 18, 1988

Report Supplied by Auction
BUTCHER COWS 1.50 UNDER LAST WEEK. GOOD 42.50-43.50; STANDARD & UTILITY 40.00-42.00; CANNERS 37.00-40.00; SHELLY 37.00 DOWN. STEERS SELECT & CHOICE 61.00-63.50; STANDARD 57.00-60.00. DAIRY CULLS, HEIFERS: GOOD TO 46.50
BUTCHER HOGS: GOOD RUN-STEADY PRICES. 220-250 LBS. 45.00-46.25, 190-205 LBS. 40.00-43.00. SOWS 300-420 LBS. 29.00-32.00; 500-600 LBS. 27.00-29.00.
VEAL CALVES: LIGHT CALVES 3.00-5.00 LOWER. GOOD-CHOICE 90.00-99.00; STANDARD 80.00-89.00; STOCKY & TIIN 70.00-79.00; LIGHT CALVES 80-100 LBS. 78.00-84.00; 60-80 LBS. 72.00-77.00; WEAK CALVES 70.00 DOWN.
CALVES RETURNING TO FARM: STRONG DEMAND, STEADY PRICES. HOLSTEIN HEIFERS- 90-120 LBS. 85.00-99.00 HOLSTEIN BULLS: 95-100 LBS 95.00-127.00; 105-115 LBS. 130.00-140.00
LAMBS: GOOD AND CHOICE 53.00-56.00; MEDIUM 50.00-53.00. SHEEP 15.00-24.50
STOCK CATTLE: LIGHT RUN, MOSTLY HEIFERS OFFERED. HEIFERS 300-500 LBS. GOOD 57.00-59.50; MED. 52.00-56.00. DAIRY COWS TO 450.00 SPRINGING HEIFERS TO 850.00.
PIGS & SIOATS: LOWER PRICES. BY THE HEAD- 20-50 LBS 15.00-21.00; BRED SOWS TO 150.00 PER HD. BY THE LB ONE LOT 188 LBS. AT 40.00.

St. Louis Cattle, Hogs

Wed., July 20, 1988
CATTLE & CALVES 75: (75 SLTR) SLAUGHTER SUPPLY CONSISTS OF COWS. TRADING ACTIVE. COWS MOSTLY 2.00 HIGHER.
COWS: CUTT, UTIL, COMM BULK SALES HI DRESS % LO DRESS % BREAKING 2-4 42.00-46.00.
BONING 1-2 46.00-47.00 47.00, FEW 48.00
CANNER & CUTTER 1-2 41.00-45.00. SHELLY CANNER 1-2 36.00-41.00. DS DB 42.00-45.00 DC 43.00-46.00 DD 46.00-47.00 DE 44.00-47.00 DF 40.00-44.00.

PROFITABLE SWINE PRODUCTION



WE ARE LOOKING FOR SWINE FINISHING FLOORS. CONTRACT OR CASH!

Call PENNFIELD FEED MARKETING

Ask For John Chapman Or Ray Boll

Join The Family Of Successful Hog Farmers

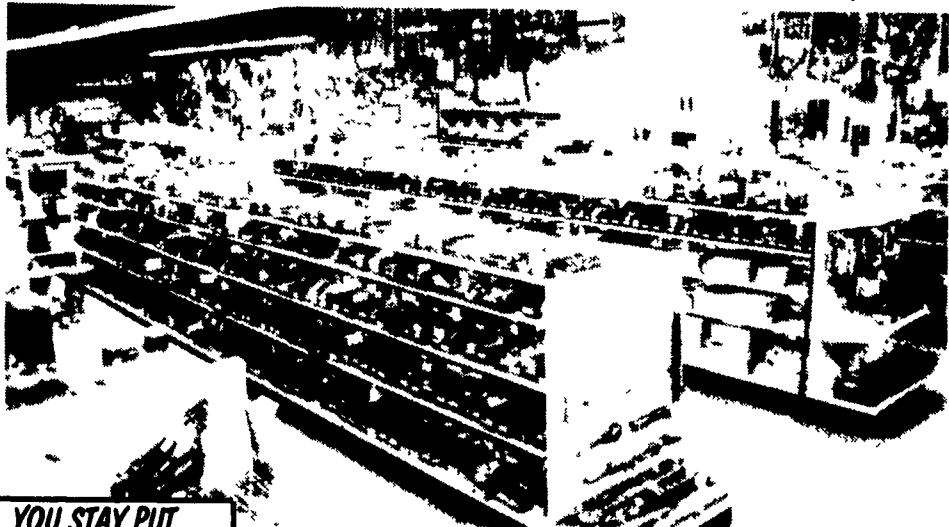
C.B. HOOBER & SON, INC.
Intercourse, PA
(717) 768-8231

HOOBER EQUIPMENT, INC.
Middletown, DE
(302) 378-9555

TWO LOCATIONS
The Saving Place

WE SHIP PARTS DAILY

VIA UPS - PPSH - BUS - AIR FREIGHT, ETC.



YOU STAY PUT
Pick Up Your Phone And Place Your Parts Order With Us

HOURS
Mon.-Fri. 7 AM-5 PM; Sat.: 7 AM-Noon

CALL US...
It Could Be We Have It

Case Authorized UPS Station

ATTENTION!



Opportunities Available

Growers Needed For Commercial Layers, Breeder Layers, And Broilers

CALL AT ONCE!
717-665-5164
or
717-575-2193