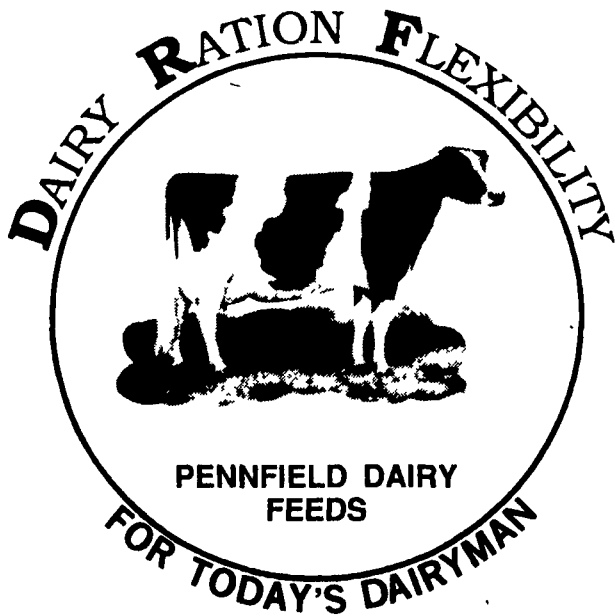
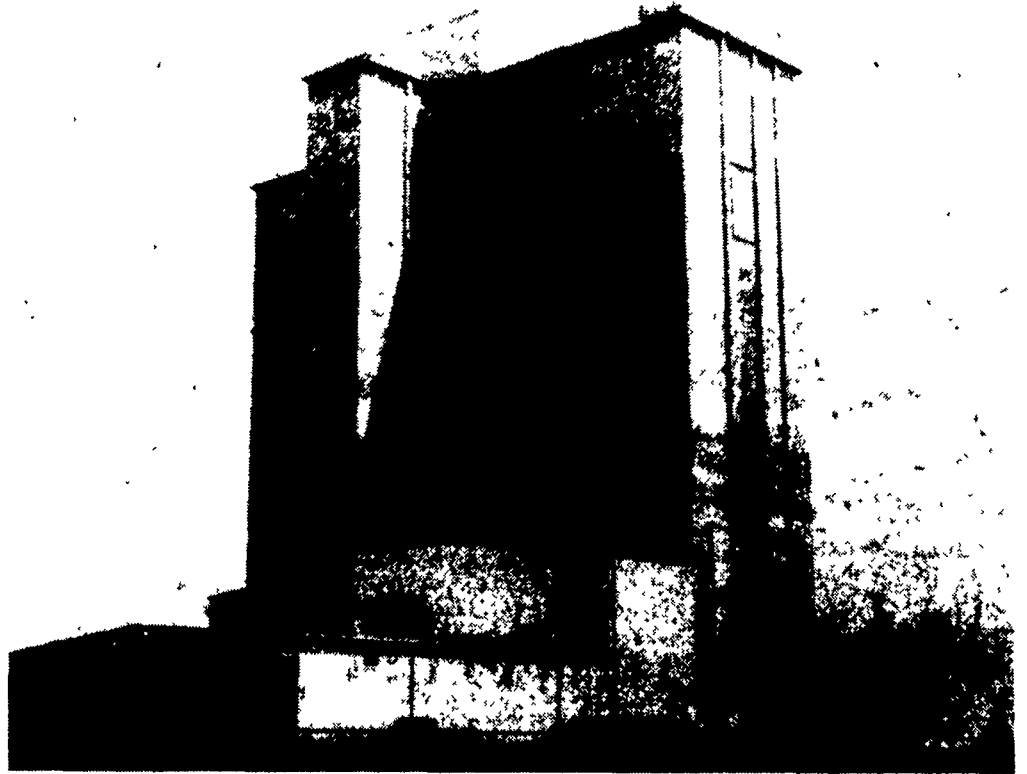


# A DAIRY RATION BALANCED FOR EACH DAIRY FARM



**WE DESIGN YOUR  
DAIRY RATION  
TO MEET YOUR NEEDS.**



**Mt. Joy Mill - Built To Meet YOUR Needs**

Pennfield's new Mt. Joy feed mill has a feed production line specifically designed by Pennfield to produce PFR (Precision Formulated Rations) custom formulated dairy feeds balanced for each dairyman's feeding program. This customized ration will be pelleted to prevent separation of vitamins and minerals from the feed ingredients. The ration will be balanced to meet specific needs such as **PROTEIN, BY-PASS PROTEIN, MINERALS, STARCH LEVEL, ADDED FAT, NDF (Neutral Detergent Fiber), ADF (Acid Detergent Fiber), PALATABILITY, TOTAL RATION DENSITY, and FEEDING PROGRAM PROFITABILITY.**

## AREAS TO LOOK AT TO IMPROVE PROFITABILITY

- 1. Use 2-feed system** for milk cows. Fresh cows get high density feed for peak lactation, and tail enders are fed least cost ration.
- 2. Increase forage feeding to lower producing cows** - this will reduce amount of feed needed to balance program.
- 3. Don't keep extra benefits** - it costs approximately \$300 per year to feed each heifer. Milking cows x 60% gives you total number of heifers birth to fresh. Example 50 milk cows x 60% = 30 heifers total.
- 4. Work on a better growing program** for the generally neglected yearling heifer. Bigger "spring of rib" heifers will eat more forage and give a bigger milk check during their first lactation. Heifers need to average 15,000-16,000 lbs. of milk for their first lactation.
- 5. Use NPN (non-protein nitrogen)** to reduce protein costs in mid to late lactation dairy rations.
- 6. Reduce overhead-** rented ground and poorly utilized equipment can be costly. It generally pays to grow your forages, but look at using custom services for silo filling.

## **FEED PRICES FOR WEEK OF JULY 18 AND SUBJECT TO CHANGE WEEKLY WITH GRAIN MARKET**

Includes 8 ton volume discount and cash discount of 2½ % due 15th following month. Deduct additional \$3.00 per ton if paid in 10 days.

#52114 14% Dairy Pellet	#51300 16% Dairy Pellet	#50800 16% Golden Flake	#51100 Summertime 16% Flake With Beet Pulp	#53300 Pellet 32% Dairy Conc.	#52536 36% Controlled Degradability
<b>\$182.67</b> Net/Ton	<b>\$191.38</b> Net/Ton	<b>\$201.71</b> Net/Ton	<b>\$204.17</b> Net/Ton	<b>\$301.47</b> Net/Ton	<b>\$286.07</b> Net/Ton



From PA  
1-800-732-0467

From MD, NJ, DE  
1-800-233-0202

# **pennfield feeds**

**Quality — Service — Value**