

National Grain Market

St. Joseph, Mo.

Tuesday, July 5, 1988

CASH GRAINS AND SOYBEANS CLOSED MIXED. WHEAT MARKETS DECLINED UNDER HARVEST PRESSURE. CORN MARKETS FIRM AS DRY WEATHER CONTINUES TO DAMAGE CROP PROSPECTS. HIGH 90 TO 100 DEGREE TEMPERATURES EXPECTED THIS WEEK WITH NO MOISTURE IN THE FORECAST. SOYBEANS SHARPLY LOWER, PRESURED BY WEAKER SOYBEAN MEAL AND OIL MARKETS.

EXPORT NEWS: SRI LANKA BOUGHT 98,000 TONNES OF U.S. NO. 2 SOFT RED WINTER WHEAT, UNDER PL480 FOR JLY/SEP SHIPMENT. SALES OF 100,000 METRIC TONS OF CORN TO UNKNOWN DESTINATION FOR 87/88. TAIWAN BOUGHT 108,000 TONNES OF U.S. NO. 2 YELLOW CORN FOR AUG/OCT SHIPMENT. SOUTH KOREA'S CORN PROCESSORS INDUSTRIES ASSOC. BOUGHT 50,000 TONNES OF U.S. NO. 2 YELLOW CORN FOR AUG/SEP SHIPMENT.

GRAINS INSPECTED FOR EXPORT FOR THE WEEK ENDING 6/30/88: WHEAT TOTALED 30.0, UP 1.1 MILLION BUSHEL, CORN TOTALED 28.8, DOWN 4.1 MILLION BUSHEL, AND SOYBEANS TOTALED 7.4, UP 5.1 MILLION BUSHEL COMPARED TO A WEEK AGO.

DATE CHANGE YEAR AGO 07/05/88 07/01/88 07/07/87 WHEAT: KANSAS CITY 3.83-3.85 DN 82.63-2.65 MINNEAPOLIS 4.38 DN 7 3.04 PORTLAND 3.96-4.00 DN 1-2 2.80-2.83 ST. LOUIS 3.53-3.57 DN 9-12 2.59-2.63.

CORN, U.S. NO. 2 YELLOW: KANSAS CITY 3.22-3.28 UP 4 1.71-1.77 MINNEAPOLIS 3.01 UP 5 1/4 1.67 1/4 SO. IOWA 3.01-3.16 UP 9-7 1/2 1.78-1.79 OMAHA 3.12-3.13 UP 4-3 1.64-1.65.

SOYBEANS, NO. 1 YELLOW: KANSAS CITY 9.17-9.37 DN 25-30 5.40-5.45 MINNEAPOLIS 9.05 1/2 DN 27 5.47 SO. IOWA 9.05-9.16 DN 29-28 5.56-5.58 C. ILL. PROCESSORS 9.10 1/2-9.36 1/2 DN 30-30 1/2 5.52-5.63.

*KANSAS CITY, US NO. 1 HARD RED WINTER WHEAT, ORDINARY PROTEIN. MINNEAPOLIS, US NO. 1 DARK NORTHERN SPRING WHEAT, 14% PROTEIN. PORTLAND, NO. 2 SOFT WHITE WHEAT, ST. LOUIS, NO. 2 SOFT RED WINTER WHEAT.

FUTURES CLOSE: KANSAS CITY (SEP) WHEAT 3.97 1/4 DN 7 3/4 2.65. MINNEAPOLIS (SEP) WHEAT 4.24 DN 13 1/2 2.67.

CHICAGO (SEP) WHEAT 4.00 1/2 DN 10 1/2 2.73 1/2.

(SEP) CORN 3.51 UP 3 1/4 1.79 1/4. (AUG) SOYBEANS 9.61 1/2 DN 30 5.50.

EXPORT: BARGE OR RAIL, PORT OF NEW ORLEANS OR NORTH TEXAS GULF. NO.1 HARD RED WINTER WHEAT ORDINARY PROTEIN 4.21 DN 82.91 1/2-2.92 NO.2 SOFT RED WINTER WHEAT 3.85-3.98 DN 19-10 2.76-2.80 NO.2 YELLOW CORN 3.60-3.69 NC-UP 2 1.92 1/4-2.01 NO.2 YELLOW SORGHUM RAIL 5.98 DN 9 BARGE 5.98 DN 11 3.36-3.41 NO.2 YELLOW SOYBEANS 9.71-9.73 DN 31-30 5.74-5.85.

Westminster Hay

Westminster, Md.

Tuesday, July 5, 1988

Report Supplied by Auction

TOTAL LOADS: 3 LDS HAY. TIMOTHY & TIMOTHY MIX: 1.40-1.90 BALE.

STRAW: 1 LD. BARLEY STRAW, 1.45 BALE. STRONG DEMAND FOR HAY AND STRAW.

King's Hay

Kirkwood, Pa.

Tuesday, July 5, 1988

Report Supplied by Auction

TOTAL LOADS: 10. ALFALFA AND ALFALFA MIX: 86.00-96.00. GRASS HAY: 84.00-92.00 TIMOTHY: 130.00. EAR CORN: 119.00. CORN FODDER: 60.00. STRAW: 1 AT 91.00, PICK-UP LD AT 51.00.

Leinbach's Hay

Shippensburg, PA

July 2 & 5

Report supplied by Auction

TOTAL LOADS: 14. ALFALFA: 72.00. MIXED HAY: 78.00-80.00. CLOVER: 81.00. EAR CORN: 131.00-146.00. GRASS: 49.00-82.00. STRAW: 38.00.

Belleville Hay

Wednesday, June 29

Belleville, PA

Report Supplied by Auction

TOTAL LOADS: 18 LDS. HAY. ALFALFA: 100.00-122.00. MIXED HAY: 85.00-100.00. TIMOTHY: 92.50-130.00. EAR CORN: 2 AT 145.00-147.50. STRAW: 1 AT 105.00.

North Jersey Market

Hackettstown, N.J.

Tues., July 5, 1988

Hay—Straw & Grain Report

MIXED 1.50 BALE.

Some markets not covered by PDA or USDA due to holiday

Martin's Hay

Coatesville, PA

Wed., July 6

ALFALFA: 145.00-175.00. MIXED HAY: 105.00-110.00. TIMOTHY: 100.00-113.00. STRAW: 75.00-90.00.

Keister's Hay

Middleburg, PA

Tuesday, July 5

Report supplied by auction
TOTAL LOADS: 8 LDS. HAY.
MIXED HAY: 65.00-105.00.
OATS: 2.50 BU.
EAR CORN: 120.00 AND 145.00.

Belknap Livestock Auction

Dayton, Pa.

Wednesday, July 6, 1988

Report Supplied by PDA

CATTLE 82...PDA...Compared with last Wednesday's market: Few Breaking Utility and Commercial sl. cows 47.75-49.25, couple 50.75&51, Cutter and Boning Utility 42.50-47.75, couple High dressing 50&50.25, Canner and Low Cutter 38.50-43.25, Shells down to 34.50. Standard sl. bullock 54.25. Couple Yield Grade No. 1, 1195/1485 lbs. sl. bulls 54.00&56.75. Feeder Cattle: Medium & Large Frame No. 1, 570/845 lbs. steers 57.25-65.75, Med. & Large #2, 440/845 lbs. 49.00-60.25. Medium Frame #1-2, 425/745 lbs. heifers 49.50-54.75.

CALVES 128...Couple Choice vealers 100.00&102, couple Good 94.50&98.50, Standard and Good 90/120 lbs. 83.00-98.00, 60/85 lbs. 72.00-92, Utility 50/130 lbs. 50.00-70.00. Farm Calves: Holstein Bulls 90/135 lbs. 100.00-151.00. Beef cross bulls & heifers 60/130 lbs. 80.00-104.00.

HOGS 127...Barrows and gilts mostly steady. Lot US No. 1-2 253 lbs. 45.80, 1-3 220/260 lbs. 44.00-44.85, 2-3 220/270 lbs.

42-43.90, lot 1-3 207 lbs. 42.50. Sows about steady. US No. 1-3 385/530 lbs. sows 26.75-30.50, few 2-3 380/510 lbs. 22.00-25.50. Boars 20.00-22.25.

FEEDER PIGS 75...US No. 1-3 15/30 lbs. feeder pigs 8.00-16.00, 35/50 lbs. 17.00-24.00, 50/65 lbs. 24.00-31.00 --- all per head.

SHEEP 4...Few Choice 90/95 lbs. spring slaughter lambs 52.00-55.00.

GOATS 31...Few Large 42.00-61.00, Medium 18.00-41.00, Kids 5.00-15.00 --- all per head.

Belleville Livestock Auction

Belleville, Pa.

Wednesday, July 6, 1988

Report Supplied by PDA

CATTLE 90...PDA...Compared with last Wednesday's market: Slaughter cows \$2.50 to \$3 higher. Couple Choice holstein steers 62.00&63.75, one Select 58.75. Choice holstein heifer, one 61.00. Breaking Utility and Commercial slaughter cows 48.00-51.75, Cutter and Boning Utility 46.75-50.75, Canner and Low Cutter 41.00-46, Shells down to 38.00. Few Yield Grade No. 2, 730/1100 lbs. sl. bulls 45.00-55.60.

CALVES 120...Choice vealer, one 94.00, Standard and Good 70/100 lbs. 88.00-98.00, few Utility 60/90 lbs. 76.00-85.00. Farm Calves: Holstein Bulls 90/125 lbs. 97.00-146, one 149.00.

HOGS 142...Barrows and gilts steady to weak. US No. 1-2 215/245 lbs. 47.10-48.10, No. 1-3 230/265 lbs. 45.35-46.75, one lot 1-3 199 lbs. 43.25. US No. 1-3 330/530 lbs. sows 24.50-29.50, few 2-3 480/640 lbs. 20.00-22.00. Few Boars 22.00-29.00.

FEEDER PIGS 150...US No. 1-3 35/65 lbs. feeder pigs 18.50-28.50, one lot 100 lbs. 40.00 --- all per head.

SHEEP 6...Few Choice 30/90 lbs. spring slaughter lambs 45.00-54.00.

GOATS 15...Few Large 33.00-51.00, few Kids 22.00-27.00 -- all per head. HOLSTEIN DAIRY COWS \$550.00-\$1100.00 --- PER HEAD.

FEED INGREDIENTS

We Want To Help You Reduce Your Feed Costs

WE SUPPLY

- 48% SOYBEAN MEAL
- ROASTED SOYBEANS
- DRIED CORN DISTILLERS
- MIXES

Call Us Today...

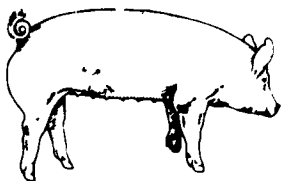
HERSHEY SERVICES

(717) 653-8783

1-800-544-4574

R.D. #1 Box 139

Marietta PA 17547



EMERY'S BUYING STATION

OPEN TO RECEIVE YOUR MARKET HOGS

AT THE GREEN DRAGON MARKET
RD 4, EPHRATA, PA 17522
1 MILE NORTH OF EPHRATA
ON NORTH STATE STREET.

HOURS: MONDAY, TUESDAY, and WEDNESDAY 7:00 A.M. to 11:30 A.M.

215-458-5677 Residence
717-733-9648 Office

YOU ARE PAID FOR YOUR HOGS IMMEDIATELY

Ken & Lois Emery, Proprietors

HAND MADE PICNIC TABLES
Pressure Treated - Built To Stand Hard Use!



LARGE SELECTION LOW PRICES

BOWMAN'S STOVE SHOP

906 E. Main St.
Ephrata, PA 17522
One Mile East of Ephrata
On Rt. 322 Just Off Rt. 222
Tues & Wed. 10-6; Thurs. & Fri 10-8, Sat. 10-4,
Closed Mondays
(717) 733-4973

KING'S AUCTION KIRKWOOD
Hay, Straw and Grain Auction
EVERY TUESDAY 12:00

Located Rt. 472 5 miles south of Quarryville or 6 miles north of Oxford corner of Rt. 472 and Noble Road at Rouse Tobacco Station.

Lloyd H. Kreider, Auctioneer AU-000513L
No out of state checks
ALL TRUCKERS AND FARMERS WELCOME

HAY & STRAW SALE

12 Noon Every Wednesday
CHANGE OF LOCATION
STARTING MAY 25
Located Gum Tree area. Going south on 41, at Cochranville turn left, one block turn right, go about 5 mi. on the right hand side. Watch for sale signs.
Harvey Z. Martin
215-383-6686 (Office)
215-445-5303 (Residence)



ATTENTION FARMERS

EVERY MONDAY HATFIELD PACKING CO. and MOYER PACKING CO.

Will Receive Your Hogs and Cattle at the DANVILLE LIVESTOCK MARKET
RD 4, Danville, PA

- We will receive your hogs from 8 AM to 12 Noon every Monday. Your hogs will be weighed and paid for immediately.
- We will also accept your sows & boars.
- Your cattle will be received from 12:30 to 5 P.M. We will either pay you for your cattle immediately or you may sell them dressed weight.
- There will not be a commission or yardage fee deducted from your check.
- You may call our office Monday morning and we will be able to tell you the base price for hogs for the day.

MELVIN M. LEHMAN - Owner
Danville Buying Station
Phone: 717-275-2880

Green Dragon Livestock Sales



Location: Ephrata RD 4. 1 mile N. on North State St., Ephrata.

COWS COWS COWS
SALE EVERY FRIDAY

Lots of good Northern Feeder & Stockers. Slaughter Cows' - Bull Steer, Veal-lamb.

11:00 A.M. - Beef Sale 200-300 each week.
1:00 P.M. - Dairy Sale.
7:00 P.M. - Small Animal Sale.

For Special Sales and Herd Dispersals on farm or at our barn or other market information call: Office 717-733-2444, Home 717-838-4318.

WALTER H. RISSER, Proprietor

All out of state and new buyers must have cash or certified check or current letter of credit from bank.

OUR BUSINESS IS SERVICE TO FARMERS

Let us help you build a successful marketing program!



Call:

717-761-2740
800-382-1356

Grains & Livestock

• Forward Contracting • Hedging Services

CFS PFA COMMODITY FUTURES SERVICE, INC.