

NEW

NEW

REDUCE DAIRY FEED COSTS

36%

CONTROLLED DEGRADABILITY



Dr. Tim Snyder is Manager of Dairy and Livestock Nutrition for Pennfield Corporation. He graduated from Penn State University in 1982 and received his Ph.D. in Dairy Science.

This all new Pennfield Dairy Concentrate is specifically formulated to provide balanced protein sources. A controlled amount of NPN, non-protein nitrogen, is used as a source of rumen degradable protein, and then less degradable (Rumen By-Pass) protein sources are used to achieve a balanced protein degradability.



Pennfield 36%
All Natural
\$334.64 Net/Ton

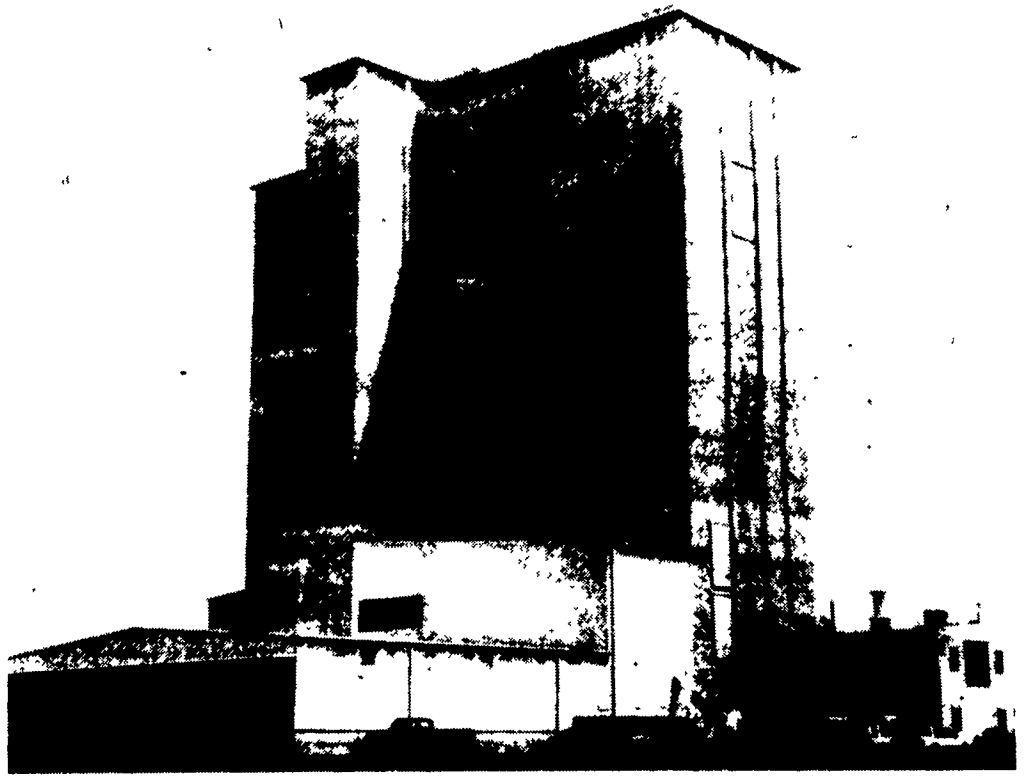
Pennfield 36% C.D.
12% NPN
\$274.59 Net/Ton

Mt. Joy Mill Formula Flexability

Pennfield's new Controlled Degradability Rations can be used to formulate a PFR- Precision Formulated Ration - specifically balanced to your forage program. Save feed \$ on dairy rations with protein levels from 16% to 36%.

Customer Satisfaction Guaranteed

New 36% C.D. is a pelleted dairy concentrate which is coated with sweet cane molasses to insure palatability. If you are not satisfied with the **Quality - Value - Performance** of this feed or any Pennfield Dairy Feed, call us and we will come pick the feed up and refund your money for the feed returned.



Mt. Joy Mill - Built To Meet YOUR Needs

FEED PRICES FOR WEEK OF JULY 4 AND SUBJECT TO CHANGE WEEKLY WITH GRAIN MARKET

Includes 8 ton volume discount and cash discount of 2½ % due 15th following month. Deduct additional \$3.00 per ton if paid in 10 days.

#52114 14% Dairy Pellet	#51300 16% Dairy Pellet	#50800 16% Golden Flake	#51100 Summertime 16% Flake With Beet Pulp	#53300 Pellet 32% Dairy Conc.	#52700 27% Maximum Density Beans-Beet Pulp Conc.
\$180.23 Net/Ton	\$189.20 Net/Ton	\$198.33 Net/Ton	\$202.61 Net/Ton	\$302.84 Net/Ton	\$319.49 Net/Ton

From PA
1-800-732-0467

From MD, NJ, DE
1-800-233-0202



pennfield feeds

Quality — Service — Value