

Public Auction Register

Closing Date Monday 5:00 P.M.
of each week's publication

**INDIANA FARMERS
LIVESTOCK MKT.**
Old Rt. 119 Homer City
412-397-2300 412-479-2600

**STATE GRADED
FEEDER PIG SALE**

Every 4th Friday of the month
starting July 22, at 7:30 PM

All pigs must be checked in between 8:00
am & 12:00 pm to be STATE GRADED.

**CONSIGNMENT
SALE**

**OF FEEDER PIGS
& FEEDER CATTLE**

FRIDAY, JULY 15, 1988
at 6:30 P.M. Sharp

Held at Keister's Middleburg Auction
Sales, Inc. Rt. 522 3 miles east of Middle-
burg, PA, 5 miles west of Sellinsgrove,
PA.

Early consignments accepted
Bring a load - buy a load

Owners,
DON & WALT KEISTER

For information call
717-837-2222, 717-966-2856
or 717-523-0360

Terms: Cash
Auctioneers:
Bryan Imes & Ray Long
Restaurant Open

FRI AUG 12 - 11AM Herd
Dispersal of 65 Head,
Purebred Cows & Heifers.
Located along Rt 322 in
Blue Ball, Pa., Lanc Co
Sale By Jerrene & Adam
Zimmerman Paul Snyder,
Auct

FRI AUG 12 - 1:30PM
State Graded Feeder Pig

Sale Grading
7:30-11:30AM Carlisle
Livestock Mkt, Inc Exit 12
off I-81

FRI & SAT AUG 12 & 13 -

Dairy and Livestock Sales

**Green Dragon
Livestock Sales**



Location: Ephrata RD 4. 1 mile N. on North State
St., Ephrata.

**SHORT NOTICE SALE
TUESDAY EVE., JULY 12, 1988**
7:30 P.M. D.S.T.

SELLING HERD FOR EARL HOFFMAN
Dauphin County

Consisting of 47 Head. 40 milking, 7 Bred
Heifers.

This is a nice young herd, 1/2 purebred, 1
Jersey, 1 Guernsey and 2 Red and White
Holstein fresh cows. Others due July-
Aug.-Sept. A year round herd.

Breeding and freshening dates
announced. Pregnancy checked. This
herd certified and accredited.

Selling due to labor problems.

xxxxxxxxxxxxxxxxxxxxxx

Also Selling

1 Load of top Fresh and Springing New
York State cows, 8 picked from one herd.
Real group of cows.

12 Springing and Short Bred Heifers, some
vaccinated.

WALTER H. RISSER, Proprietor
717-733-2444
Home 717-838-4318

Back-East Summer Farm
Toy Show & Auction New
Holland Fire Hall Dave Nolt
& Dale Stoltzfus, Aucts

SAT AUG 13 - Absolute
Real Estate Auction Of 44
Acre Farm & Machinery 2
Miles From Nottingham Pa
& 30 Miles S Of Lancaster,
Pa At 241 W. Ridge Road,

Open House On July 21st-
12 To 4 P.M Also Saw Mill,
#600 Ford Truck, 18 Trac-
tors, Household, Tools, Etc
Only 6 Miles From I-95 By
Order Of Owner Elmer E
Janney Whiteside Auction
Service, Harry W & Jeffrey
E Whiteside, Aucts Sever-
al Amish Farms Close By.

SAT AUG 13 - 9AM HH,
Antiques, Tools, Antique
Tractor & Miniature Antique
Steam Units Loc 1 mi N of
Intercourse, on 772 W
Newport Rd, Lanc Co, Pa
Terms by Kore M & Anne
Stoltzfus. Auct Robert E &
Jeffrey R. Martin

SAT. AUG 13 - 9AM Ant-
ique & Collectible China,
Glassware, Furniture, Etc
To Be Held at the Farmers-
ville Fire Hall, E Farmers-
ville Rd, between Browns-
town & Hinkletown, Far-
mersville, Lanc Co, Pa
Catalogue available by
mailing \$5 00 to Stauffer
Auction, c/o C.E. Spohn,
837-BW. Main St., Ephrata,
Pa. 17522. Mahlon & Berth-
a Stauffer, Owners. T
Glenn, Timothy & Thomas
Horst

SAT. AUG. 13 - 10AM Real
Estate 1PM. Ford 600
Truck w/Dump, (18) Trac-
tors, Tools, Frick Saw Mill,
Antique Farm Items, Cup-
board & Etc Location 241
W. Ridge Rd. West Notting-
ham, Twp Ches. Co. Pa.
Turn off Rt. 1 by-pass 1/2 mi.
N. Mason-Dixon Line. Fol-
low 1 mi. to sale 2 mi S
Nottingham, Pa. 3 mi N.
Rising Sun, MD 30 mi from
Wilm., DE & Lanc., Pa.
Peter J. Weygandt, Attor-
ney. Elmer E Janney, Own-
er. Whiteside Auction
Service

FRI AUG. 19 - Ace Drilling
Coal Co & South Fork
Equipment Co Complete
Liquidation. Summerhill,
Pa. Earthmoving & Mining
Equipment

FRI. AUG. 19 - Anastasis
Farm Complete Dairy Herd
Dispersal- 150 Head Regis-
tered Holsteins Huntington
Co, Pa Edwin L Steach,
Owner. Kling's Auctions,
Inc, Sale Mgrs

FRI AUG 19 - Special
Sale. New Holland Sales
Stables, Inc, New Holland,
Pa

FRI. AUG. 19 - 1:30PM Pigs
State Graded Sale West-
minster Livestock Auction,
Westminster, Md

SAT. AUG 20 - 9:30AM
Real Estate 1 PM Val. Real
Estate, HH, Antiques,
Coins & Stamps Loc 2 mi
W of Intercourse, turn off Rt.
340 on Old Leacock Rd. to
166 Maple St., Gordonville,
Leacock Twp, Lanc Co,
Pa. Terms by Charlie L
Lefever. Auct: Robert E &
Jeffrey R Martin

PUBLIC AUCTION

For Mr. & Mrs. Joseph Hixon,
Rt. 173, Bloomsbury, N.J.
Approx. 6 Miles from Easton, PA
toll bridge.

TUESDAY, JULY 19,
9:30 a.m.

1914-3 door model T Ford car with original
wheels & upholstery, 2 spare tires in brass
tire carrier never used, brass radiator,
lights, lamps & motor meter, Mr. Hixon only
2nd owner, has had the Ford for 49 years.
Lots of model T parts, windshields, axles,
clocks, lights, speedometers, luggage car-
riers, running boards, steering wheels with
2 locks, complete band holders, water
pumps & more. Brass Ford & Daniels
motor meters, 1928 Essex car boot top,
water pumps & side mirror. Imperial Olds
6-volt brass siren, wolf whistle for car, 6 volt
Klaxton horn, exhaust whistle for truck,
brass steam whistle, Tally-O-Horn w/reed,
2 3/4 hp economy gas engine, 8 brass oil-
ers, 2 Wilson Bros., Easton, PA corn meal
grinders w/large wheels, Blacksmith Forge
& tools, 150 lb. anvil, 3 broad axes, Coop-
ers adz, wood & molding planes, slate
tools, 100-11"x22" slate, leg vice, 2 bag
carts, 7 old draw knives, 2-row hand corn
planter, 2 coal telescope chutes, 12 model
T Ford lanterns, DL & W - LI-Adlake & other
railroad lanterns, Dietz inspector lanterns,
large red globe, high ball lantern, 4-50 ton
railroad jacks, railroad spike hammers, tie
carrier, car movers, oiler, DL & W 1922 car
service book, walking plow, fodder cutter, 2
grind stones, 1 hole corn sheller, items
from Edison cement Plant, New Village,
N.J. & numerous old tools. Wheel Horse 8
hp 36" cut riding mower, like new. Allis
Chalmers 10 hp 42" cut riding mower,
Homko 3 hp rototiller. Partial listing. Not
responsible for accidents.

Terms: Cash or approved check.
Arthur Hanna, Auctioneer,
Bloomsbury, N.J. 201-995-7862

This listing will not appear again
—Clip & Save—
LUNCH

**Short Notice Sale at
GLOBE-RUN FARMS**
R.D. Petersburg, PA - Huntingdon Co.

**Complete Dairy Herd Dispersal Of
John Sr. and Annabelle Foster
Due To Their Retirement.**

Farm is located just off Rt. 305 on Globe-Run Road. 18 miles south of State College
— 16 miles north of Huntingdon — 30 miles northeast of Altoona. From the North take
Rt. 26 through State College and continue over Tussy Mt., take the first blacktop road
to the right at the foot of the mountain and then turn onto Rt. 305. From the south take
Rt. 22 to Alexandria and turn onto Rt. 305. 10 miles to farm. Watch for signs.

MONDAY

July 11, 1988

Starting At 10:30 A.M.

100 — REGISTERED HOLSTEINS — 100

55 Milking Age

15 Bred Heifers, 15 Open Heifers, 13 Calves & 2 Yearling Bulls

The herd has been vaccinated for IBR, BVD, PI³, Haemophilus, Lepto 5 on a regular basis
for the past 10 years. The herd has been certified and accredited for 12 years. All animals of
age have been calfhood vaccinated for Bangs.

30 DAY HEALTH CHART & PREGNANCY CHECK

Herd is classified and DHIR tested—
Dec. 87 DHIR Lactation Average 19,259M. 3.6% 700F. 3.1% 605 Lbs. Protein
Feb. 88 B.A.A.- 105.4 selling 1 EX.- 13 V.G.- 16 GP- of this group 5 have EX.M.
& 14 have VGM.

This Is A Young Herd With Fancy Udders.—Average Age At Calving Is 3 Yrs.

Sires Include:

Columbus, Wayne Springs, Citation R, Warden, Odyssey, Astro Jet, Starbuck, Valiant,
Elevation Tony, Quality Ultimate, Messiah, Chaplain, Tradition, Elevation Pete, Elevation,
Sexation, Globe-Run Glendell Word, Globe-Run Glendell Tim, Globe-Run Matt Max

Service Sires Include:

Wayne Springs, Warden, Messiah, Astro Jet, Triple-Threat, Tab, Camero, Hy-Class,
Classic, "Globe-Run Warden Top Gun", Service Sire Globe-Run Warden Top Gun Is The
Son Of The Well-Known Globe-Run Sexy Darlene.

3 Yrs. EX 92 All E's
2-3 365 20,001 3.9 782F.
3-6 365 29,169 4.5 1317F.

TERMS: CASH OR GOOD CHECK DAY OF SALE

FOR MORE INFORMATION, PLEASE CALL US.

Catalogs Will Be Available At The Farm.

Sale Under Tent — Lunch Available

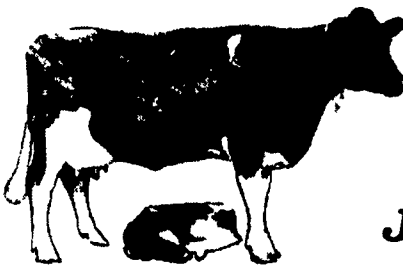
Owner,
**John A. &
Annabelle Foster, Sr.**
814-667-3567

Sale Manager,
John A. Foster, Jr.
814-669-9486

DAY TIME SALE

**COMPLETE
CHESTER COUNTY
HERD DISPERSAL**

At The Shady Lane Dairy Sales, Inc., 1/4 Mile West of
Quarryville Off Rt. 372 On Oak Bottom Rd.



**130 HEAD
HIGH GRADE
HOLSTEINS**

**FRIDAY
JULY 22, 1988**

11:00 AM D.S.T.

A real top herd of milking cows averaging 55 lbs. per day from Phillip
Hicks.

Watch following newspaper
for full advertisement.

SHADY LANE DAIRY SALES INC.

23 Shady Lane
Quarryville, Pa.

Glenn 717-786-2750

Dave 717-786-1728