

**National Grain Market**

St. Joseph, Mo.  
Wed., June 29, 1988

CASH GRAINS AND SOYBEANS SHARPLY LOWER. SCATTERED THUNDER STORMS SPREAD ACROSS MAJOR PORTIONS OF THE MIDWEST WITH FORECASTS FOR CONTINUED RAIN FOR THE NEXT 2-3 DAYS. EXPORT NEWS: BOLIVIA BOUGHT 124,500 TONNES OF U.S. NO. 2 OR BETTER HARD RED WINTER WHEAT, UNDER PL480 FOR JLY/AUG SHIPMENT. SOUTH KOREA TENDERS

TONIGHT FOR 20,000 TONNES OF U.S. WHEAT. GUATEMALA WILL TENDER JLY 6 ON 47,500 TO 62,500 TONNES OF U.S. WHEAT FOR JLY/SEP UNDER PL480. ALGERIA BOUGHT 100,000 METRIC TONS OF CORN FOR 87/89 MARKETING YEAR. MEXICO'S BUYING AGENCY, CONASUPO, BOUGHT 26,000 TONNES OF U.S. SOYBEANS FOR JULY SHIPMENT. THE DOMINICAN REPUBLIC BOUGHT 8,000 TONNES OF U.S. SUNOIL FOR JLY SHIPMENT UNDER PL480. PAKISTAN TENDERS TODAY FOR CONTAINERIZED U.S. SOYMEAL UNDER AID FINANCING.

DATE CHANGE YEAR AGO 06/29/88 06/28/88 07/01/87 WHEAT: KANSAS CITY 3.54-3.58 DN 23 2.58-2.60 MINNEAPOLIS 4.34 DN 20 2.98 1/2 PORTLAND 3.60-3.70 DN 18-16 2.82-2.87 ST. LOUIS NA 2.50-2.52  
CORN, U.S. NO. 2 YELLOW: KANSAS CITY 2.93-3.07 DN 21-15 1.71-1.75 MINNEAPOLIS 2.57 DN 22 1/2 1.68 3/4 SO. IOWA 2.67-2.74 DN 23 1.74-1.76 OMAHA 2.70-2.80 DN 23-20 1.63-1.65  
SOYBEANS, NO. 1 YELLOW: KANSAS CITY 8 81-8.91 DN 87-83 5 27-5.37 MINNEAPOLIS 8 71 DN 78 1/2 5.29 1/4 SO. IOWA 8.76-8.86 DN 61-78 5.36-5.38 C. ILL. PROCESSORS 9.14-9.37 DN 45 5.41-5.45  
\*KANSAS CITY, US NO. 1 HARD RED WINTER WHEAT, ORDINARY PROTEIN. MINNEAPOLIS, US NO. 1 DARK NORTHERN SPRING WHEAT, 14% PROTEIN. PORTLAND, NO. 2 SOFT WHITE WHEAT, ST. LOUIS, NO. 2 SOFT RED WINTER WHEAT.  
FUTURES CLOSE: KANSAS CITY (JUL) WHEAT 3.59 DN 23 2.60 1/2 MINNEAPOLIS (JUL) WHEAT 4.14 DN 20 2.62 3/4

CHICAGO (JUL) WHEAT 3.53 1/2 DN 19 3/4 2.65 1/4 (SEP) CORN 3.27 1/2 DN 15 1.79 3/4 (JUL) SOYBEANS 9.31 DN 83 1/2 5.36 1/4  
EXPORT: BARGE OR RAIL, PORT OF NEW ORLEANS OR NORTH TEXAS GULF. NO.1 HARD RED WINTER WHEAT ORDINARY PROTEIN 3.91-3.92 DN 22-21 2.84 1/2-2.88 1/2 NO.2 SOFT RED WINTER WHEAT 3.56-3.58 DN 19 2.68 1/2-2.71 NO.2 YELLOW CORN 3.19-3.38 DN 29-15 1.97 NO.2 BARGE 5.68 DN 39 3.21-3.23 NO.2 YELLOW SOYBEANS 9.41-9.43 DN 78-79 5.62-5.63.

**King's Hay**

Kirkwood, Pa.  
Tuesday, June 28, 1988  
Report Supplied by Auction  
TOTAL LOADS: 20.  
ALFALFA MIX: 67.00-92.00.  
TIMOTHY: 87.00-96.00.  
1 ROUND BALE: 34.00.  
STRAW: 66.00-84.00.  
EAR CORN: 112.00-116.00.

**Indiana Livestock**

Homer City, Pa.  
Thursday, June 30  
Report supplied by PDA  
CATTLE: 129. Compared with last week's market sl. steers mostly steady, sl. cows 4.00 to 5.00 higher. One high Choice sl. steer 69.00, Choice 63.00-66.75, Select 59.00-63.25, few Standard 53.25-59.25; Choice sl. heifer 61.00-65.50, Select 56.50-61.25, Standard 51.25-55.00, few Utility 44.00-50.00; Breaking Utility & Commercial sl. cows 47.00-52.00, Cutter & Boning Utility 44.00-48.00, Canner & low Cutter 40.00-44.50, Shells down to 27.00; few YG 1 1100-1500 lb. sl. bulls 54.00-57.00, few YG 2 900-1100 lbs. 50.00-52.50.  
FEEDER CATTLE: Steers few Large Frame 2 600-800 lbs. 55.00-58.00; heifers few Large Frame 2 380-450 lbs. 50.00-60.00.  
CALVES: 141. Few Choice 95.00-102.00 with one at 114.00, few Good 89.00-94.00; Standard & Good 90-120 lbs. 81.00-97.00, 60-85 lbs. 75.00-88.00, Utility 50-70 lbs. 43.00-64.00.  
FARM CALVES: Holstein bulls 90-125 lbs. 100.00-138.00; beef cross bulls & heifers 80-110 lbs. 80.00-112.00.  
HOGS: 194. Barrows & Gilts 1.50 to 2.00 lower. US 1-2 225-255 lbs. 44.50-45.00, lot at 45.50; 1-3 220-240 lbs. 44.00-44.60; 2-3 235-275 lbs. 43.00-44.00; 2-4 250-300 lbs. 38.00-42.00; 1-3 190-202 lbs. 40.00-43.00; Sows US 1-3 300-600 lbs. 26.00-29.00; few 2-3 325-700 lbs. 23.00-26.00; few Barrows 25.00-26.00.  
FEEDER PIGS: 22. US 1-3 35-45 lbs. 28.00-34.00 per head.  
SHEEP: 74. High Choice 80-90 lb. spring sl. lambs 63.00-65.25; Choice 75-95 lbs. 58.75-63.00; Good & Choice 70-77 lb. feeder lambs 55.00-57.50. Sl. sheep 16.00-22.00.  
GOATS: 12. Few Large 50.00-62.00, few Medium 30.00-42.00 all per head.

**Good's Hay**

Leola, Pa.  
Wed., June 29, 1988  
Report Supplied by Auction  
TOTAL LOADS: 66.  
ALFALFA: 83.00-129.00.  
MIXED HAY: 71.00-131.00.  
TIMOTHY: 65.00-101.00.  
OATS: 2.20 BU.  
EAR CORN: 105.00-126.00.  
GRASS: 58.00-65.00.  
STRAW: 62.00-75.00.

**Westminster Hay**

Westminster, Md.  
Tuesday, June 28, 1988  
Report Supplied by Auction  
TOTAL LOADS: 21.  
ALFALFA: 81.00.  
TIMOTHY & DONOEL CLOVER: 2.05 BALE.  
TIMOTHY: .65-1.05 BALE (GOOD) 1.25-1.80 BALE (VERY GOOD).  
MULCH HAY: .35-.50 BALE.  
ORCHARD GRASS MIXED: 60.00 BALE, 54.00 TON.  
BARLEY: 1.10-1.65 BALE.

**Green Dragon Hay**

Ephrata, Pa.  
Friday, June 24, 1988  
Report Supplied by Auction  
TOTAL LOADS: 69.  
ALFALFA: 60.00-162.00.  
MIXED HAY: 51.00-111.00.  
TIMOTHY: 68.00-98.00.  
OATS: 2.25-2.90 BU.  
EAR CORN: 104.00-126.00.  
GRASS: 52.00-53.00.  
STRAW: 49.00-82.00.

**Keister's Hay**

Middleburg, PA  
Tuesday, June 28  
Report supplied by auction  
TOTAL LOADS: 11 LDS. HAY.  
MIXED HAY: 45.00-82.50.  
OATS: 2 AT 2.70 & 2.80 BU.  
EAR CORN: 5 AT 87.50-110.00.  
STRAW: 4 AT 30.00-50.00.  
CORN FODDER: 32.50.

**Leinbach's Hay**

Shippensburg, PA  
June 25 & 28  
Report supplied by Auction  
TOTAL LOADS: 21.  
ALFALFA: 48.00.  
MIXED HAY: 37.00-57.00.  
TIMOTHY: 49.00-68.00.  
GRASS: 40.00-60.00.  
STRAW: 40.00.

SELL  
IT  
WITH  
A

LANCASTER  
FARMING  
CLASSIFIED



**OUR BUSINESS IS SERVICE TO FARMERS**

Let us help you build a successful marketing program!

Call:  
717-761-2740  
800-382-1356

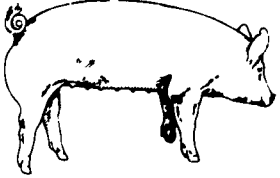


**Grains & Livestock**

• Forward Contracting • Hedging Services

**CFS** PFA COMMODITY FUTURES SERVICE, INC.

**EMERY'S BUYING STATION**



**OPEN TO RECEIVE YOUR MARKET HOGS**

AT THE GREEN DRAGON MARKET  
RD 4, EPHRATA, PA 17522  
1 MILE NORTH OF EPHRATA  
ON NORTH STATE STREET.

HOURS: MONDAY, TUESDAY, and  
WEDNESDAY 7:00 A.M. to 11:30 A.M.

We Will Be Closed Wed., June 29  
and Mon., Tues. & Wed.,  
July 4, 5 & 6.  
Will Reopen July 11

215-458-5677 Residence  
717-733-9648 Office

**YOU ARE PAID FOR YOUR HOGS IMMEDIATELY**

Ken & Lois Emery, Proprietors

**CRIPPLED AND DISABLED**

**Cows, Steers & Bulls For Slaughter Under USDA Inspection**

Call Wayne Taylor  
**717-866-6289**  
**215-286-9400**  
Lebanon, Berks,  
Lancaster & Chester  
Counties

**Green Dragon Livestock Sales**

Location: Ephrata RD 4. 1 mile N. on North State St., Ephrata.



**COWS COWS COWS SALE EVERY FRIDAY**

Lots of good Northern Feeder & Stockers. Slaughter Cows' - Bull Steer, Veal-lamb.  
11:00 A.M.-Beef Sale 200-300 each week.  
1:00 P.M.-Dairy Sale.  
7:00 P.M.-Small Animal Sale.

For Special Sales and Herd Dispersals on farm or at our barn or other market information call: Office 717-733-2444, Home 717-838-4318.

**WALTER H. RISSER, Proprietor**  
All out of state and new buyers must have cash or certified check or current letter of credit from bank.

**ATTENTION FARMERS**

**EVERY MONDAY HATFIELD PACKING CO. and MOYER PACKING CO.**

Will Receive Your Hogs and Cattle at the **DANVILLE LIVESTOCK MARKET**  
RD 4, Danville, PA

- We will receive your hogs from 8 AM to 12 Noon every Monday. Your hogs will be weighed and paid for immediately.
- We will also accept your sows & boars.
- Your cattle will be received from 12:30 to 5 P.M. We will either pay you for your cattle immediately or you may sell them dressed weight.
- There will not be a commission or yardage fee deducted from your check.
- You may call our office Monday morning and we will be able to tell you the base price for hogs for the day.

MELVIN M. LEHMAN - Owner  
Danville Buying Station  
Phone: 717-275-2880

**HISTORIC COLUMBIA MARKET HOUSE**  
Farmer's Market Since 1869  
Columbia, PA

**OPPORTUNITY** for management of existing Farmer's Market. The Borough of Columbia will be receiving proposals for a long-term lease/management agreement on the Columbia Market House, for continuing use as a Farmer's Market.

Interested parties contact: Gary Myers, Borough Manager, Borough Offices, Columbia, PA 17512 (717) 684-0221 8 A.M. - 5 P.M., Monday - Friday.

Also: **STANDHOLDERS** - Select stands still available for 1988. Reasonable rates, all products welcome.  
Contact: Gary Myers, Borough Manager, (717) 684-0221