

Livestock market and auction news

Lancaster Livestock Auction

Monday, June 27

Report Supplied by USDA

Cattle	Calves	Hogs	Sheep	Goats
Monday's Receipts	787	123	501	755
787	123	501	755	442

Monday's Auction

783 136 581 716 643

Last Monday's Auction

1048 113 319 633 565

Last Year's Auction

1101 144 552 533 502

CATTLE: SLAUGHTER STEERS 1.00 HIGHER, WITH CHOICE AND PRIME 1.00-2.00 HIGHER; SLAUGHTER HEIFERS 1.00-2.00 LOWER THAN LAST MONDAY; COWS FIRM TO 1.00 HIGHER; BULLOCKS AND BULLS 1.00-2.00 HIGHER. SUPPLY INCLUDED 66% SLAUGHTER STEERS, 13% SLAUGHTER HEIFERS, 10% COWS, AND 11% BULLS.

SLAUGHTER STEERS: FEW HIGH CHOICE AND PRIME 2-4 1120-1425 LB. 68.50-70.35; CHOICE 2-3 FEW 4 1060-1460 LB. 66.25-69.60; SELECT AND LOW CHOICE 2-3 1050-1400 LB. 63.50-67.00, FEW 925-1050 LB. 61.75-62.75; SMALL SUPPLY SELECT 2-3 57.75-62.00; SELECT AND CHOICE 1160-1485 LB. HOLSTEINS 58.00-63.50, FEW CHOICE 63.75-66.25, FEW SELECT 1050-1200 LB. 52.00-56.00.

SLAUGHTER HEIFERS: CHOICE 2-3 950-1175 LB. 64.50-66.00, FEW 66.50-67.50; CHOICE 2-3 875-950 LB. 62.50-64.25, FEW 740-825 LB. 58.25-59.25; SELECT 2-3 850-1050 LB. 56.00-62.75.

COWS: BREAKING UTILITY AND COMMERCIAL 2-4 44.00-46.75; CUTTER AND BONING UTILITY 1-3 42.50-46.00, COUPLE HIGH DRESSING 46.50-47.25, FEW LOW DRESSING 41.50-42.50.

BULLOCKS: CHOICE 1-3 1050-1375 LB. 59.75-61.00, COUPLE 61.00-62.50; SELECT 1-2 1000-1200 LB. 55.75-59.00

BULLS: YIELD GRADE 1 1300-2000 LB. 57.50-60.00, FEW 60.00-62.75; YIELD GRADE 2 1000-1500 LB. 53.00-57.00, FEW 900-1000 LB. 51.00-53.00

VEAL CALVES: VEALERS MOSTLY STEADY; SLAUGHTER CALVES 10.00 LOWER. DEMAND GOOD FOR HOLSTEIN BULLS TO RETURN TO FARM

VEALERS: CHOICE 160-280 LB 90.00-100.00; HIGH GOOD AND LOW CHOICE 130-300; LB. 75.00-90.00, 80-110 LB. 85.00-95.00, FEW 95.00-100.00; STANDARD AND LOW GOOD 65-95 LB. 65.00-85.00

SLAUGHTER CALVES: GOOD AND CHOICE 200-450 LB. 55.00-70.00, FEW 70.00-75.00.

RETURNED TO FARM: BULK 95-125 LB. HOLSTEIN BULLS 115.00-140.00, SMALL FRAME 100.00-115.00.

HOGS: BARROWS AND GILTS 2.00-2.50 LOWER, EXTREMES 3.00 LOWER; SOWS 2.00-3.00 LOWER.

BARROWS AND GILTS: US 1-2 210-245 LB. 46.75-47.50. US 1 215-240 LB. 47.50-49.00. US 1-3 210-255 LB. 46.00-46.75. US 2-4 FEW 240-260 LB. 44.75-46.00.

SOWS: US 1-3 300-650 LB. 26.00-29.75.

SHEEP: SPRING LAMBS WEAK TO 5.00 LOWER; SLAUGHTER EWES STEADY, INSTANCES 5.00 LOWER.

SPRING LAMBS: CHOICE AND PRIME 80-110 LB. 55.00-65.00, 110-130 LB. 53.00-55.00; CHOICE 50-70 LB. 65.00-75.00, FEW 30-50 LB. 80.00-100.00.

SLAUGHTER EWES: UTILITY AND GOOD 10.00-30.00; YEARLINGS AND TWO-YEAR OLDS 30.00-45.00.

Vintage Livestock Auction

Tuesday, June 29, 1988

Report Supplied by USDA

Cattle	Calves	Sheep	Goats
Today	702	897	6
Last Tuesday	930	866	21

3

Last Year 727 752 7 0

CATTLE: SLAUGHTER STEERS FULLY STEADY, INSTANCES 50 HIGHER; SLAUGHTER HEIFERS NOT FULLY TESTED; COWS STEADY, INSTANCES 50 HIGHER; BULLS SCARCE. SUPPLY INCLUDED 49% SLAUGHTER STEERS AND 46% COWS.

SLAUGHTER STEERS: SMALL SUPPLY CHOICE AND PRIME 2-4 1150-1375 LB. 69.75-72.00, 10 HEAD 72.00-73.50; CHOICE 2-3 FEW 4 1075-1450 LB. 67.00-70.00; SELECT AND LOW CHOICE 2-3 1020-1350 LB. 65.00-67.50; FEW SELECT 2-3 61.50-65.00; SELECT AND CHOICE 1095-1540 LB. HOLSTEINS 59.75-62.85.

COWS BREAKING UTILITY AND COMMERCIAL 2-4, BULK 42.50-46.00, HI DRESSING 46.00-47.75; CUTTER AND BONING UTILITY 1-3, LOW DRESSING 41.00-42.25, BULK 42.25-46.00, COUPLE 47.75-49.75, HI DRESSING 46.00-47.00; CANNER AND LOW CUTTER LOW DRESSING 37.50-38.75, BULK 39.00-41.50.

BULLS: FEW YIELD GRADE 2 1150-1750 LB. 52.50-56.50.

VEAL CALVES: VEALERS STEADY TO 5.00 LOWER. SUPPLY INCLUDED 66% IN GRADED SALE OF WHICH 70% SOLD TO RETURN TO FARM.

VEALERS: FEW CHOICE 250-285 LB. 80.00-83.00; HIGH GOOD AND LOW CHOICE 145-270 LB. 73.00-80.00, 80-110 LB. 82.00-92.00; STANDARD AND LOW GOOD 60-80 LB. 70.00-84.00.

RETURNED TO FARM: 35 HEAD 120-125 LB. HOLSTEIN BULLS 120.00-121.00, 80 HEAD 110-115 LB. 131.00-134.00, 110 HEAD 100-105 LB. 137.00-139.00, AND 75 HEAD 90-95 LB. 124.00-129.00; 85 HEAD SMALL FRAME 100-115 LB. 111.00-121.00 AND 20 HEAD 85 LB. 100.00. 35 HEAD 100-120 LB. HOLSTEIN HEIFERS 100.00-101.00 AND 35 HEAD 85-95 LB. 88.00-90.00.

SHEEP: NO MARKET TEST. GOATS: NO MARKET TEST.

GOATS: ALL GOATS SOLD BY THE HEAD LARGE FLESHY 50.00-80.00, THIN 35.00-50.00; MEDIUM FLESHY 40.00-50.00, THIN 30.00-40.00; SMALL, MAINLY KIDS 25.00-35.00, THIN 15.00-25.00.

Lancaster Livestock Auction

Lancaster, PA

Wed., June 29, 1988

Cattle	Calves	Hogs	Sheep	Goats
Wed's Receipts	64	9	700	19
64	9	700	19	2

Wed's Auction

36 11 471 0 2

Last Wed's Auction

66 7 299 0 0

Last Year's Auction

44 42 459 1 0

CATTLE: Small supply slaughter steers fully steady; insufficient volume any other class for a market test.

SLAUGHTER STEERS: Choice 2-4 1085-1405 lb 68.25-70.25; couple Select and low Choice 2-3 1115-1520 lb 64.50-67.00; couple Choice 1285-1325 lb Holsteins 60.00-63.00.

VEAL CALVES: Insufficient volume for a market test.

HOGS: Barrows and gilts firm; sows 1.00 lower.

BARROWS AND GILTS: US 1-2 210-245 lb 47.00-47.75. US 1 210-240 lb 48.00-49.25. US 1-3 210-250 lb 46.00-46.75. US 2-4 200-255 lb 45.00-45.75, 255-265 lb 44.00-44.50.

SOWS: US 1-3 300-650 lb 25.00-28.00, FEW 300-450 lb 28.50-29.50.

SHEEP: No market test

GOATS: No market test

Jersey Shore Livestock Market, Inc.

Auction every Thursday

at 4:00 p.m.

Jersey Shore, Pa.

Report supplied by Auction

Thursday, June 30, 1988

RETURN TO FARM CALVES 110.00-150.00.

GOOD VEAL 85.00-105.00.

COMMON VEAL 60.00-84.00.

CHOICE STEERS 66.00-70.00.

SELECT STEERS 62.00-65.00.

COMMON STEERS 52.00-61.00.

COMMERCIAL COWS 45.00-50.25.

CANNERS-CUTTERS 42.00-48.00.

SHELLS 35.00-41.00.

CHOICE HEIFERS 63.00-64.00.

HEIFERS 57.00-62.00.

COMMON HEIFERS 48.00-56.00.

GOOD FEEDERS 60.00-65.00.

COMMON FEEDERS 56.00-60.00.

BULLS 48.00-60.50.

GOOD HOGS 44.00-46.25.

HEAVIES 38.00-45.00.

SOWS 27.00-31.00

ROUGHES 22.00-25.00.

New Holland Livestock

New Holland, Pa.

Thursday, June 30

Cattle	Calves	Sheep	Goats
Today	663	590	147
663	590	147	192

Last Thursday

1007 573 55 67

Last Year

662 562 90 24

CATTLE: SLAUGHTER STEERS 1.00-2.00 HIGHER, WITH SOME SALES CHOICE FULLY 5.00 HIGHER FOR THE WEEK; SLAUGHTER HEIFERS NOT FULLY TESTED; COWS 2.00-4.00 HIGHER; BULLOCKS FIRM TO 1.00 HIGHER, ALTHOUGH CHOICE NOT TESTED; BULLS FULLY STEADY. SUPPLY INCLUDED 59% SLAUGHTER STEERS AND 33% COWS.

SLAUGHTER STEERS: FEW HIGH CHOICE AND PRIME 2-4 1175-1375 LB. 71.50-73.60; CHOICE 2-3, FEW 4 1070-1400 LB. 68.25-71.00, AROUND 40 HEAD MOSTLY CHOICE 3 1230-1300 LB. 71.00-72.60; FEW CHOICE 3-4 1475-1825 LB. 67.75-70.75; COUPLE LOTS CHOICE 2-3 980-995 LB. 66.50-67.85; SELECT AND LOW CHOICE 2-3 1050-1350 LB. 65.00-68.00; FEW SELECT 2-3 61.00-65.00

SLAUGHTER HEIFERS: FEW CHOICE 2-3 985-1175 LB. 63.00-68.25; FEW SELECT 2-3 980-1245 LB. 61.00-63.00.

COWS BREAKING UTILITY AND COMMERCIAL 2-4 BULK 47.00-50.00; COMMERCIAL 3-4 BULK 43.50-46.00, CUTTER AND BONING UTILITY 1-3 LO DRESSING 43.00-45.50; BULK 46.00-49.00; HI DRESSING 49.50-51.00; CANNER AND LOW CUTTER LO DRESSING 37.50-40.50; BULK 41.00-43.75.

BULLOCKS: SELECT 1-2 1050-1325 LB. 56.25-60.00.

BULLS: YIELD GRADE 1 1350-2300 LB. 57.75-60.00, SIX HEAD 61.00-64.00; YIELD GRADE 2 1000-1550 LB. 55.00-57.50.

VEAL CALVES: VEALERS FIRM TO 5.00 HIGHER. DEMAND GOOD FOR HOLSTEIN BULLS TO RETURN TO FARM.

VEALERS: CHOICE 185-320 LB. 89.00-98.00, COUPLE 104.00; HIGH GOOD AND LOW CHOICE 140-285 LB 78.00-88.00, 80-120 LB 86.00-94.00; STANDARD AND LOW GOOD 65-90 LB 75.00-85.00.

RETURNED TO FARM: BULK 90-130 LB. HOLSTEIN BULLS 115.00-133.00, FEW 133.00-138.00; SMALL FRAME 85-115 LB. 94.00-115.00.

SHEEP: SPRING LAMBS MOSTLY STEADY; SLAUGHTER EWES FULLY STEADY.

SPRING LAMBS: CHOICE 75-100 LB 60.00-67.00, FEW 40-65 LB. 69.00-77.00, GOOD 45-90 LB. 54.00-60.00.

SLAUGHTER EWES FEW UTILITY AND GOOD 16.00-25.00, FEW YEARLINGS AND TWO YEAR OLDS 28.00-34.00.

GOATS: ALL GOATS SOLD BY THE HEAD. LARGE 59.00-69.00, COUPLE 88.00; MEDIUM 33.00-50.00; BULK OF THE SUPPLY SMALL AT 17.00-30.00

Lancaster County Weekly

Friday, July 1

Report Supplied by PDA

This Week	Cattle	Calves
2300	2300	1620
Last Week	3384	1563
Last Year	2715	1485

CATTLE: Slaughter steers 3.00-4.00 higher, some late sales Choice 5.00 higher; slaughter heifers 1.00-2.00 lower, although tested after Monday; cows advances through the week closing 3.00-5.00 higher; bull and bullocks 1.00-2.00 higher. Supply included 56% slaughter steers, 6% slaughter heifers, 27% cows, 6% bulls, with balance feeders.

SLAUGHTER STEERS: Few Choice and Prime 2-4, 1150-1375 lb. 71.00-73.60; Choice 2-3, few 4 1070-1450 lb. 67.50-71.00, around 40 head Choice mostly 3 1230-1300 lb. late 71.00-72.60; few Choice 3-4 1400-1825 lb. 67.00-70.75; Select and low Choice 2-3 1020-1350 lb. 65.00-68.00; few Select 2-3 60.00-65.00; Select and Choice 1160-1540 lb. Holsteins 58.00-63.50, few Choice 63.50-66.25, few Select 1050-1300 lb. 52.00-56.00.

SLAUGHTER HEIFERS: Choice 2-3 950-1175 lb. 64.25-66.50, few 66.50-68.25; Choice 2-3 875-950 lb. 62.50-64.25, few 740-825 lb. 58.25-59.25; Select 2-3 850-1245 lb. 56.00-63.00.

COWS: Breaking Utility and Commercial Low Dressing 2-4, Bulk 46.00-48.00, Hi Dressing 48.00-50.00; Cutter and Boning Utility 1-3 Low Dressing 42.50-45.00, Bulk 45.00-49.00; Hi Dressing 49.50-51.00; Canner and Low Cutter Low Dressing 37.50-40.00, Bulk 40.50-43.75.

BULLOCKS: Choice 1-3 1050-1375 lb. 59.75-61.00, couple 61.00-62.50; Select 1-2 1000-1325 lb. 55.75-60.00.

BULLS: Yield grade 1 1350-2300 lb. 57.50-60.00, few 60.00-64.00; yield grade 2 1000-1550 lb. 53.00-57.50, few 900-1000 lb. 51.00-53.00.

VEAL CALVES: Vealers mostly steady, although high Choice and Prime absent; slaughter calves 10.00 lower. Demand good for Holstein bulls to return to farm.

VEALERS: Choice 160-320 lb. 88.00-100.00, few 80.00-88.00; high Good and low Choice 140-300 lb. 73.00-88.00, 80-120 lb. 82.00-94.00; Standard and low Good 65-85 lb. 65.00-85.00.

SLAUGHTER CALVES: Good and Choice 280-450 lb. 55.00-70.00, few Choice 70.00-75.00.

RETURNED TO FARM: Bulk 85-130 lb. Holstein bulls 115.00-140.00; small frame 85-115 lb. 94.00-121.00. Few 100-120 lb. Holstein heifers 100.00-101.00 and few 85-95 lb. 88.00-90.00.



B&R CATTLE CO.

RD 1, Marietta, PA

17547

Office Phone:

(717) 653-8164

Specializing In

Stockers &

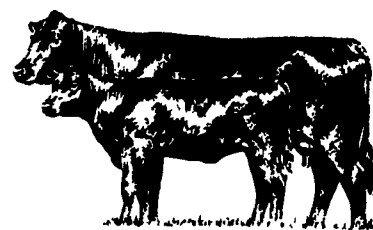
Feeders

JOHN BOWMAN

Ph (717) 653-5728

RON RANCK

Ph (717) 656-9849



VINTAGE SALES STABLES, INC.

Sale Every Tuesday 10:30 A.M.

Slaughter Cattle Auction - Steers, Bulls, Heifers, Cows, Feeder Cattle.

Get calves in early. We start to grade and weigh at 2:00.

Business Phone 717-768-8204

Home Phone 215-458-8518

L. Robert Frame, Manage.

Box 100 Paradise, PA

10 miles East of Lancaster on Rt. 30



Open 24 hours a day

365 days a year

(717) 394-2611

AUCTIONS

MONDAY

9:00 A.M. — Slaughter Bulls, Heifers, Steers, Cows

10:00 A.M. — Goats, Veal Calves, Lambs

12:00 Noon — Slaughter Hogs