

**National Grain**

**Market**

St. Joseph, Mo.

Wed., June 22, 1988

CASH GRAINS AND SOYBEANS MIXED. WHEAT MARKETS DECLINED UNDER HARVEST PRESSURE. COUNTRY MOVEMENT OF NEW CROP WHEAT SUPPLY IS GOOD CORN AND SOYBEAN PRICES HIGHER AS DROUGHT CONTINUES TO DETERIORATE CROP CONDITIONS.

EXPORT NEWS: JAMAICA BOUGHT 9,500 SOFT RED WINTER WHEAT AND 4,400 TONNES OF HARD RED SPRING UNDER PL480 FOR JUN/JULY SHIPMENT. TAIWAN BOUGHT 61,000 TONNES OF U.S. NO. 1 GRADE WHEAT FOR JLY/AUG SHIPMENT. SOUTH KOREA BOUGHT 46,000 TONNES OF U.S. WHEAT FOR JLY/AUG SHIPMENT SAUDI ARABIA BOUGHT 25,000 TONNES OF U.S. BARLEY AND

WILL BE PAID IN GENERIC CERTIFICATES REDEEMABLE FOR CCC STOCKS. SHIPMENT IS FOR AUG. TAIWAN BOUGHT 111,000 TONNES NO. 2 YELLOW CORN FOR AUG/SEPT SHIPMENT. SOUTH KOREA'S NATIONAL LIVESTOCK COOPERATIVES FEDERATION WILL TENDER THURSDAY FOR 150,000 TONNES OF U.S. NO. 3 YELLOW CORN FOR AUG/SEPT. TAIWAN BOUGHT 78,000 TONNES OF U.S. NO. 2 YELLOW SOYBEANS FOR AUG SHIPMENT.

DATE CHANGE YEAR AGO 06/22/88 06/21/88 06/24/87 WHEAT: KANSAS CITY 3.87-3.91 DN 10 2.65-2.68 MINNEAPOLIS 4.62 DN 4 3.11 1/4 PORTLAND 3.87-3.90 DN 6-9 2.89-2.92 ST. LOUIS 3.44-3.48 NO COMP 2.57-2.61. CORN, U.S. NO. 2 YELLOW: KAN-

SAS CITY 3.25-3.32 UP 6-8 1.88-1.94 MINNEAPOLIS 3.09 1/2 UP 10 1.82 1/4 SO. IOWA 3.02-3.20 NO COMP 1.90-1.90 1/2 OMAHA 3.17-3.22 UP 7-11 1.79-1.82 SOYBEANS, NO. 1 YELLOW. KANSAS CITY 10.09-10.16 UP 5 5.44-5.54 MINNEAPOLIS 10.05 NC 5.50 SO. IOWA 9.90-10.07 NO COMP 5.55-5.57 C ILL. PROCESSORS 9.95 1/2-10.27 DN 3-NC 5.54-5.62.

\*KANSAS CITY, US NO. 1 HARD RED WINTER WHEAT, ORDINARY PROTEIN MINNEAPOLIS, US NO 1 DARK NORTHERN SPRING WHEAT, 14% PROTEIN PORTLAND, NO 2 SOFT WHITE WHEAT, ST LOUIS, NO 2 SOFT RED WINTER WHEAT FUTURES CLOSE KANSAS CITY (JUL) WHEAT 3.92 1/4 DN 9 3/4 2.63 MINNEAPOLIS (JUL) WHEAT 4.47 DN

4 2.60 1/4. CHICAGO (JUL) WHEAT 3.83 DN 6 1/2 2.66 1/4 (JUL) CORN 3 44 1/2 UP 10 1 92 1/4 (JUL) SOYBEANS 10 54 1/2 UP 8 5 55 EXPORT BARGE OR RAIL, PORT OF NEW ORLEANS OR NORTH TEXAS GULF NO.1 HARD RED WINTER WHEAT ORDINARY PROTEIN 4 17-4 18 DN 9 2 96-2 99 NO 2 SOFT RED WINTER WHEAT 3 87-3 90 DN 7-6 2 76-2 77 NO 2 YELLOW CORN 3.64-3 66 UP 8-9 2.11 NO 2 YELLOW SORGHUM RAIL 6 29 UP 17 BARGE 6 23 UP 18 3.53-3 55 NO 2 YELLOW SOYBEANS 10.52-10 58 UP 4 5 80-5 89

**Green Dragon Hay**

Ephrata, Pa.

Friday, June 17, 1988

Report Supplied by Auction

TOTAL LOADS: 85. ALFALFA: 78 00-138 00 MIXED HAY: 30.00-126 00. TIMOTHY: 70.00-97.00. ORCHARD GRASS: 1 LOAD 45 00 OATS: 210.00-300.00. EAR CORN: 104.00-118 00 SHELL CORN: 1 LOAD 280.00. STRAW: 52 00-71 00.

**Leinbach's Hay**

Shippensburg, PA

June 18 & 21

Report supplied by Auction

TOTAL LOADS: 27. ALFALFA: 55.00-82.50. MIXED HAY: 51 00-67 00. TIMOTHY: 49 00-80.00 EAR CORN: 110 00-115 00 GRASS: 54.00-57.00 MULCH: 27.00. STRAW: 40.00-51 00.

**New Wilmington Hay**

New Wilmington, PA.

Friday, June 17, 1988

Report Supplied by Auction

MIXED HAY: 54 00-75.00, ONE LOAD AT 95.00. TIMOTHY: 2 LOADS AT 37.00&80.00. OATS: 1.55-2 10/BU., MOSTLY 2 00-2.10/BU EAR CORN: 70 00-82.50 STRAW: 2 LOADS 100 00-110 00.

**Dewart Hay**

Dewart, PA.

Monday, June 20, 1988

Report Supplied by Auction

TOTAL LOADS: 6. MIXED HAY: 1 LOAD 41 00. STRAW: 60 00-71.00. WOOD 26 00&35.00

**New Holland Hay**

New Holland, Pa.

Monday, June 20, 1988

Report Supplied by Auction

TOTAL LOADS: 88. ALFALFA: 60.00-97 00, 1 LOAD @ 175.00. MIXED HAY: 79 00-130.00 1 LOAD @ 150.00. TIMOTHY: 75 00-96.00 1 LOAD @ 125.00. ORCHARD GRASS: 74 00 & 76 00 CLOVER: 1 LOAD @ 92.00. OATS: 2.60 PER BUSHEL. EAR CORN: 82 00-119 00 GRASS: 70 00 & 77.00 STRAW 55 00-100.00.

**Martin's Hay**

Coatesville, PA

Wed., June 22

TOTAL LOADS: 7. ALFALFA: 110.00. TIMOTHY: 100.00. TIMOTHY MIX: 90.00. STRAW: 80.00

**Keisters**

**Middleburg Auction**

Middleburg, Pa.

Tues., June 21, 1988

CATTLE 404 .. REPORT SUPPLIED BY THE AUCTION ...Choice slaughter steers 64 50-70.25, Select 62 00-65.75, Standard 58-61.75; Choice holsteins 62-65.75, Select 58-61.75, Standard 52-57.75. Choice sl. heifers 63.00-66.75, Select 58-62.75, Standard 48-57.75. Breaking Utility & Commercial sl. cows 42 00-46.75, Cutter & Boning Utility 40-45.75, Canner & Low Cutter 36.00-40, Shells down to 28.00. Choice sl. bullocks 61.75-66.25, Select 56-60.75. Yield Grade No. 1, 1200/1960 lbs. sl. bulls 54.75-60.75, No 2, 800/1200 lbs. 50.00-54.50 Feeder Cattle: Steers 350/875 lbs. 65 00-78 00 Heifers 350/750 lbs. 55 00-62.00 Bulls 350/825 lbs. 55.00-75.00.

CALVES 184...Choice vealers 91 00-110, Standard and Good 90/110 lbs 95.00-105, 60/90 lbs. 85.00-95 00 Farm Calves: Holstein Bulls 90/130 lbs 110.00-140 00; Holstein heifers 90/120 lbs 100.00-120.00

HOGS 508 US No 1, 215/225 lbs barrows and gilts 51 00-52, 1-2 200/240 lbs. 50 00-51, 1-3 220/250 lbs 48.75-50, 2-3 200/270 lbs 46 00-48 00. US No. 1-3 280/650 lbs. sows 32 00-35, few to 40 00, 2-3 275/575 lbs 25 00-32.00. Boars 29.00-35.00.

FEEDER PIGS 596...US No. 1-3 20/40 lbs. feeder pigs 24.00-35 00, 1-3 40/50 lbs 35.00-40.00 --- all per head.

SHEEP 42...Choice 80/110 lbs spring slaughter lambs 56.00-60.00, 55/60 lbs. 71.00-76.00. Slaughter sheep 20 00-28.00 GOATS 0 No Market Test

**Penns Valley Livestock**

Centre Hall, Pa.

Tuesday, June 21, 1988

Report Supplied by Auction

BEEF COWS: UTILITY AND COMMERCIAL 43.50-49.75; CUTTERS 39.00-43.00; CANNERS 35.00-38 50; SHELLS 28.00.

HEIFERS: STANDARD 60.00-64 50; COMMERCIAL 44.75-58 50.

STEERS: GOOD 61.00-65.75; STANDARD 50 00-61.00.

BULLS: GOOD 58.50-61 50, STANDARD 54.75-58 50.

FEEDER CATTLE: 300-500 LBS. LARGE FRAME 60.00-68 00; 500-700 LBS. LARGE FRAME 50 00-60 00; 500-700 LBS. SMALL FRAME 48.00-57.00.

VEAL CALVES: GOOD 99.00-107.00; STANDARD 85 00-98.00; UTILITY 74 00-84 00.

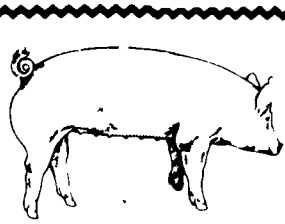
FARM CALVES: BULLS 105 00-136.00, HEIFERS 100.00-115 00

HOGS: 48 00-49.75.

BOARS: 28.00-25.00.

SHOATS: 25-30 LBS. PER HEAD 16 00-26.00; 30-35 LBS PER HEAD 22 00-35 00

GOATS PER HEAD: 30 00-49 00.



**EMERY'S BUYING STATION**

**OPEN TO RECEIVE YOUR MARKET HOGS**

AT THE GREEN DRAGON MARKET RD 4, EPHRATA, PA 17522 1 MILE NORTH OF EPHRATA ON NORTH STATE STREET.

HOURS: MONDAY, TUESDAY, and WEDNESDAY 7:00 A.M. to 11:30 A.M.

We Will Be Closed Wed., June 29 and Mon., Tues. & Wed., July 4, 5 & 6. Will Reopen July 11

215-458-5677 Residence 717-733-9648 Office

**YOU ARE PAID FOR YOUR HOGS IMMEDIATELY**

Ken & Lois Emery, Proprietors

**CRIPPLED AND DISABLED**

**Cows, Steers & Bulls For Slaughter Under USDA Inspection**

Call Wayne Taylor

**717-866-6289 215-286-9400**

Lebanon, Berks, Lancaster & Chester Counties



**ATTENTION FARMERS**

EVERY MONDAY

HATFIELD PACKING CO. and MOYER PACKING CO.

Will Receive Your Hogs and Cattle at the DANVILLE LIVESTOCK MARKET

RD 4, Danville, PA

- We will receive your hogs from 8 AM to 12 Noon every Monday. Your hogs will be weighed and paid for immediately.
- We will also accept your sows & boars.
- Your cattle will be received from 12.30 to 5 P M We will either pay you for your cattle immediately or you may sell them dressed weight
- There will not be a commission or yardage fee deducted from your check.
- You may call our office Monday morning and we will be able to tell you the base price for hogs for the day.

MELVIN M. LEHMAN - Owner Danville Buying Station

Phone: 717-275-2880

**Green Dragon Livestock Sales**



Location: Ephrata RD 4. 1 mile N. on North State St., Ephrata.

**COWS COWS COWS SALE EVERY FRIDAY**

Lots of good Northern Feeder & Stockers. Slaughter Cows' - Bull Steer, Veal-lamb

11:00 A.M.-Beef Sale 200-300 each week.

1:00 P.M.-Dairy Sale.

7:00 P.M.-Small Animal Sale.

For Special Sales and Herd Dispersals on farm or at our barn or other market information call: Office 717-733-2444, Home 717-838-4318.

WALTER H. RISSER, Proprietor

All out of state and new buyers must have cash or certified check or current letter of credit from bank.

**HISTORIC COLUMBIA MARKET HOUSE**

Farmer's Market Since 1869

Columbia, PA

OPPORTUNITY for management of existing Farmer's Market. The Borough of Columbia will be receiving proposals for a long-term lease/management agreement on the Columbia Market House, for continuing use as a Farmer's Market.

Interested parties contact: Gary Myers, Borough Manager, Borough Offices, Columbia, PA 17512 (717) 684-0221 8 A.M. - 5 P.M., Monday - Friday.

Also: **STANDHOLDERS** - Select stands still available for 1988. Reasonable rates, all products welcome.

Contact: Gary Myers, Borough Manager, (717) 684-0221

**OUR BUSINESS IS SERVICE TO FARMERS**

Let us help you build a successful marketing program!

Call: 717-761-2740 800-382-1356



**Grains & Livestock**

- Forward Contracting
- Hedging Services

**CFS** PFA COMMODITY FUTURES SERVICE, INC.