

Public Auction Register

Closing Date Monday 5:00 P.M.
of each week's publication

SAT JULY 16 - Machinery, Crops, Household, Antiques, Etc 2 miles south of Oxford, Pa on Barnsley-Chrome Rd, 30 mi s of Lancaster By order of John R Hilaman, Owner White-side Auction Service, Aucts

SAT JULY 16 - 8AM Tractors, Mowers, Broom Equipment, Tools, Parts Location: Take Roosevelt Ave Ext. (Bull Rd) North Off Of Rt 30 in York, Pa, Approx 3 Mile To Graffius Rd. Watch For Signs William H. Graffius Estate, Ernest Graffius, Executor Blaine & Nevyn Rentzel, Aucts

SAT JULY 16 - 9AM Misc Equipment York Vo-Tech School, 2179 South Queen Street, York, Pa Off Interstate 83 At Exit 6 - South Queen Street Blaine N Rentzel, Auct

SAT JULY 16 - 10AM Farm Equip Auction Located Between Pine Grove & Friedensburg, Pa Sch Co along Rt 443 Turn South at Deturksville (near Red Lion Cafe) & proceed approx 2 miles to Hetzels Church & then to sale site nearby Sale signs will be posted Paul L & Betty M Weaver, Owners. Eugene G Klinger Auct Service

SAT JULY 16 - 10AM Real

Estate, Farm Tractors, Equip, Power & Hand Tools, Butchering Equip, Antiques, HH Loc Box 164 Sigman Rd, RD1 New Providence, Providence Twp, Lanc Co, Pa Take Rt 272 about 6 mi S of Lanc Turn right on Pennsy Rd Go 1 mi & turn left on Sigman Rd to sale By Emmie N Sigman Estate Howard Shaub, Auct

WED JULY 20 - 4PM Antique Store Items, Antiques & Collectibles Located Along Rt 322 Approx 4 Miles East Of Ephrata, Hinkletown, Lancaster Co, Pa Mary I Wanner, Owner T Glenn & Timothy G & Thomas A Horst

THURS JULY 21 - 8:30AM, Real Estate 2PM Valuable 27 Acres, Woodland, Farm Equipment, Household Goods And Antiques Location Rt. 641 Appx 4-5 Mi North Of Rt 75 In Huntingdon Co, Pa Merle H and Nannie G Klobetanz, Own-

ers Sanford G Leaman, Auct.

FRI, JULY 22 - 4:30 PM, & SAT, JULY 23 - 8AM Antiques, Tools, Kentucky Rifle, Guns, Antiques Car, Etc Location From Carlisle, Pa Follow Rt #34 North, Approx 25 Miles To Clouser Hollow Rd, (1 Mile South Of New Bloomfield In Perry County) Turn Left And Follow Clouser Hollow Road 1 Mile To Wye In Road, Bare Left And Go 1/2 Mile To Sale Location (Watch For Sale Signs) Joann L Kirk, Owner Ed Shull, Aucts

FRI JULY 22 - Special

Dairy and Livestock Sales

Sale. New Holland Sales Stables, Inc

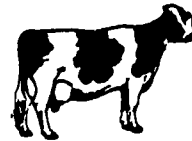
FRI JULY 22 - 7PM 18.9 Acres w/Large Ranch-Type House & 1 Ac Pond At 1100 Copenhafer Rd (Zions View Area), York, Pa Exit 12 off I-83, go W 2 mi to Copenhafer Rd on right, go N on Copenhafer Rd 2 mi to land & house or left 8 mi. N of York, Pa Seller Mr and Mrs Pau Stahle. Auct: Blaine N Rentzel.

DAIRY HEIFER SALE THURSDAY EVENING JULY 7, 1988

7:30 P.M.

Located in Franklin Co., between Chambersburg and Shippensburg, Pa., off route 11 - 1 mile south of Mt. Rock - turn off route 11 at Dekalb Seed Corn Sign, 2nd farm.

50 HEIFERS AND 5 COWS



Most Animals selling will be Springing or Just Fresh! A Few Heifers bred for Fall; 5 Young Cows that should be close!

Majority Vaccinated - Everything Vaccinated for IBR Complex 30 Day Test.

15 Registered Heifers - Balance Grades & I.D. Grades! Sires of Registered Animals Include - Valiant Sammy (2), Wileeda Citation R; Kay Elevator; Prince Valiant; Star Wars and other Good A-I Sires.

Several with records on their dams! Close & Fresh Heifers - bred to a Spirit Son; Later heifers bred to a Melvin Son; Also 12 bred to Angus Bull.

"These are nice well-grown heifers that were purchased mainly at Herd Dispersals! Also selling - For Gerald Hammond - 6 Close Springing Heifers.

For Eugene Keller - 10 Grade 1st & 2nd calf Heifers.

Owner - **JOHN C. MUMMAU** Shippensburg, Pa. 717 532-8022

Sale Managed By-- **KLING'S AUCTIONS, INC.** Landisburg, Pa. Lic. #500 717 789-3883

250-350 HEAD SPECIAL HORSE SALE WORK HORSES-MULES

FRIDAY, JULY 8, 1988

Sale 7:00 P.M. Tack 6:00 P.M. Horses hitched at 12 Noon weather permitting.

AT NEW HOLLAND SALES STABLES, INC. 12 Miles East of Lancaster, Pa. just off Rt. 23, New Holland, Pa.



- * 8 yr. old Morgan Gelding, 15 hands.
- * 1 Load Work Horses, Mules, and Driving Horses consigned by Ward Wright.
- * 1 Load Work and Driving Horses consigned by Bub Leonard.
- * 1 Load Driving Horses consigned by Clayton Waterbury.
- * 1 Load Driving Horses consigned by Jonas Beiler.
- * 1 Load Driving Horses consigned by Reuben G. Stoltzfus.
- * 1 Load Driving Horses consigned by Elam B. Stoltzfus.

Plus many more consignments by sale time.

For more information contact:

Abe Diffenbach, Mgr. 717-354-4341

Norman Kolb 717-397-5538

NEXT HORSE SALE SEPT. 9, 7:00 P.M.

Special Estate Dairy Sale Selected Consignments Accepted

To partially settle the Estate of a Columbia County farmer, we have been authorized to sell the dairy herd at auction. For family convenience, the auction will be held at Chatham Area Auction, Route 203, 3 miles west of Chatham, and 4 miles east of Valatie, New York.

12:30 p.m. Saturday, July 2, 1988 12:30 p.m. 90 Head of Hy-Grade Holstein Dairy Cattle 90

Herd consists of 45 cows of milking age, of which approximately 15 are fresh May through July. 15 due July and August Balance bred for fall freshening. 45 big open holstein heifers, majority of breeding age.

Majority of the cows and heifers are Calfood Vaccinated - all tests are up to date. Cattle are eligible for interstate shipment. All cattle bred 60 days Vet-checked for pregnancy.

This is a good freestall herd, not on test, but paying the bills for over 20 years.

Terms of Sale: Cash or Good Check day of sale.

New buyers must have a bank letter.

Consignments accepted until 12 Noon Sale Day.

D. LUTHER AUCTIONEERS Amenia, New York 12501 914-373-9900/8215

Auctioneers-- Dave and Jody Luther

NYS Toll Free 1-800-D.LUTHER
USA Toll Free 1-800-372-0099

DAIRY SALE

Friday Evening, July 1, 1988

7:00 P.M.

Selling at Kling's Sale Barn, located 15 miles North of Carlisle on Route 74, 2 1/2 miles N.E. of Landisburg, Perry Co., Pa.

100 HEAD DAIRY CATTLE

George Willis Dairy Herd

Consisting of 50 Holsteins, Majority are grades, 3 Registered Very daughters; 10 Springing Heifers, several animals selling just fresh, Balance in different stages.

Pregnancy Checked - Health Charts

A Good-working Year-round Herd - Good Udders - Never Pushed Lots of Potential!

ADELINE WILLIS, Owner

Plus- 10 Grade springing cows from 1 Herd in McKean County - all due June and July - Good Dairy Cattle!

10 Registered Cows and 1st-Calf Heifers from Cortland Co., N.Y. and Several good fresh Canadian Cows and 1st-calf Heifers.

A Few features include-

A Maries Thunder - 2 Yrs. old just fresh; Dam an EX Ned Boy; 2nd Dam VG; 3rd Dam a 1-Star Brood Cow.

A 2 yr. old Marlin bred to Starbuck - due 6-26; Dam a VG Quality Ultimate; 2nd & 3rd Dams both VG; 4th Dam EX.

An 83 pt. Sexation - sells just fresh with Count Heifer Calf - 4 yr. record of 21,118m 3.70 777f.

An 83 pt. Wayne Springs - sells fresh with Ned Boy Heifer Calf - 2 yr. record - 14,804m 4.20 622f.

A VG-85 pt. Straight-Pine Elevation Pete with over 22,000m - sells fresh and milking over 90 lbs.

Twin Ned Boy Bred Heifers - Due in September to Chairman and Troy!

A Mars Tony due in July with first calf to Cleitus, Dam 86 pt. Milu with 25,770m 783f; 2nd dam over 100,000 lifetime.

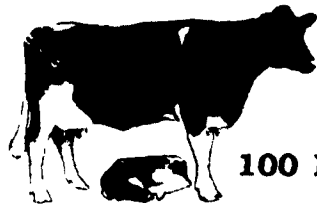
A Walkway Chief Mark just fresh and Milking 80 lbs.

A Maries Thunder due July to Hanoverhill Inspiration.

SALE MANAGED BY-



LANDISBURG, PA. 17040
717 789-3883



BRENNAN DAIRY HERD DISPERSAL

100 HEAD - MOSTLY REGISTERED HOLSTEINS WITH A FEW GRADES

NITE SALE

TOP PRODUCTION

TUESDAY, JUNE 28 - 7:30 PM D.S.T.

At Shady Lane Dairy Barn, Quarryville, PA, 1/4 mile West of Quarryville.

Featuring Top Pedigreed Young Holsteins with lots of milk. 2 cows over 100 lbs. milk, 3 over 90 lbs., 7 over 80 lbs., and 15 over 70 lbs. 31 2-yr.-olds and 19 3-yr.-olds. Mr. Brennan has developed an outstanding herd for production and type using only the finest A.I. sires. DHIA 17,024 3.7 627, with 10 cows made over 20,000.

Latest Classification

1 EX 10 VG 24 GP 15 G

There will be milking daughters of Ned Boy, Walkway Chief Mark, Spirit, Jet Stream, Elevation Very, Stewart, Bell and Kit Builder.

Service Sires include Glenafton Enhancer and Ned Boy.

Two cow families with 3 generations of VG animals.

Special Mention: 2-yr.-old fresh Ned Boy heifer from an 89 point Jet Stream with over 28,000 milk, 1100 fat, real fancy.

Catalogs at Ringside

Interstate Tested

FOLLOWING THIS DISPERSAL, we will sell another herd from Connecticut of 44 head all home raised. Many years of Eastern artificial breeding. 6 recently fresh, 10 dry springing, 6 due Sept., 5 Oct., 3 Nov., balance all stages lactations. All calfood vaccinated.

Also, 1 load all fresh cows from New Jersey. We have sold a lot of cows from this herd. They do well. Plan to attend these herd dispersals for top quality cattle.

30 day TB blood test

1 Reg. Jersey bull sired by Top Brass ready for service

SHADY LANE DAIRY SALES, INC. Quarryville, PA
Phone Glenn 717-786-2750
Dave 717-786-1725

P.S. Due to amount of cattle-- Sale will start promptly at 7:30 D.S.T.