



Livestock market and auction news

Virginia Weekly

Richmond, Va.

REQUEST 2903

Thurs.-Thurs. June 9-15, 1988

FEEDER STEERS AND HEIFERS IN VIRGINIA LAST WEEK WERE \$1.00-6.00 LOWER AS MIDWEST PRICES WERE \$5.00 TO \$9.25 HIGHER. SLAUGHTER STEERS AND HEIFERS IN VIRGINIA WERE MIXED, 75 CENT HIGHER TO \$1.25 LOWER AS MIDWEST PRICES WERE \$1.50 TO \$4.00 LOWER. THE BOXED BEEF CUT-OUT ON TUESDAY WAS \$113.67 DOWN \$2.29 FROM LAST TUESDAY. COWS AND BULLS AT VIRGINIA AUCTIONS WERE \$1.00-4.00 LOWER LAST WEEK AS MIDWEST PRICES WERE \$3.00-4.00 LOWER. BEEF PRODUCTION WAS 19 PERCENT ABOVE THE PREVIOUS WEEK AND 3 PERCENT ABOVE A YEAR AGO. AVERAGE DRESSED WEIGHTS WERE 17 POUNDS HEAVIER THAN LAST YEAR.

VEAL AND CALF PRICES AT VIRGINIA AUCTION WERE \$3.00-4.00 HIGHER AS MIDWEST PRICES WERE STEADY TO \$1.00 LOWER. VEAL AND CALF SLAUGHTER WAS 23 PERCENT ABOVE LAST WEEK BUT DOWN 11 PERCENT FROM LAST YEAR. AVERAGE DRESSED WEIGHTS WERE 14 POUNDS HEAVIER THAN LAST YEAR.

LAMB PRICES AT VIRGINIA AUCTIONS WERE STEADY TO \$1.00 LOWER AS MIDWEST PRICES WERE \$2.00 LOWER. LAMB SLAUGHTER LAST WEEK WAS 21 PERCENT ABOVE A WEEK AGO AND 2 PERCENT ABOVE A YEAR AGO. AVERAGE DRESSED WEIGHTS WERE 7 POUNDS HEAVIER THAN LAST YEAR.

SLAUGHTER HOGS IN VIRGINIA LAST WEEK WERE 25 CENT TO \$1.50 HIGHER AS MIDWEST PRICES WERE \$1.50 HIGHER. FRESH PORK PRICES WERE STEADY TO \$4.00 HIGHER.

PORK PRODUCTION WAS 13 PERCENT ABOVE A WEEK AGO AND 9 PERCENT ABOVE A YEAR AGO. AVERAGE DRESSED WEIGHTS WERE 3 POUNDS HEAVIER THAN LAST YEAR.

THE RICHMOND HOG MARKET CLOSED STEADY TO 50 CENT LOWER LAST TUESDAY WITH BARROWS AND GILTS US 1-4 200-240 LBS AT \$47.00-47.50 PER CWT.

THE SOUTHEAST VIRGINIA HOG MARKET CLOSED 50 CENT TO 1.00 LOWER THAN LAST WEDNESDAY WITH BARROWS AND GILTS US 1-4 200-240 LBS AT \$47.50-49.00 PER CWT. AT HARRISONBURG, LYNCHBURG AND TAPPAHANNOCK HOG PRICES WERE STEADY TO \$2.00 LOWER THAN LAST WEDNESDAY AT \$46.00-49.50. SOWS RANGED \$28.00-31.00 AND BOARS \$22.00 PER CWT.

SLAUGHTER STEERS AND HEIFERS 4% SLAUGHTER COWS 20%, SLAUGHTER BULLS 3%, SLAUGHTER CALVES AND VEALERS 2%, FEEDER CATTLE UNDER 600 LBS 56%, OVER 600 LBS 15%.

PRICE RANGES FOR VIRGINIA AUCTIONS

SLAUGHTER CATTLE STEERS; CHOICE 2-3 1000-1300 LBS 69.25-75.50 CHOICE 2-3 1300 LBS & OVER 68.00-76.50 HEIFERS; CHOICE 2-3 950-1100 LBS 65.00-72.40 CHOICE 2-3 1100 LBS & OVER 68.25-74.50 UTILITY & COMMERCIAL COWS 42.00-54.75 BULLS; 1-2 900-1300 LBS 50.00-64.00 1-2 1300-1600 LBS 54.00-65.00 1-2 1600 LBS & OVER 55.00-66.25 SLAUGHTER CALVES AND VEALERS VEALERS - HIGH CHOICE AND PRIME 100-250 LBS 98.00-120.00 GOOD AND CHOICE 100-250 LBS 71.00-87.00 CALVES - GOOD AND CHOICE 250-500 LBS 72.00-81.00 FEW 65.00 SLAUGHTER LAMBS HIGH CHOICE & PRIME 95-125 LBS SPRING 57.00-61.00; BUCKS 53.00-58.00 SLAUGHTER HOGS US 2-4 200-250 LBS 45.00-49.50

SOWS US 1-3 300-500 LBS 32.00-37.00; 500 LBS & OVER 31.30-38.00 FEEDER CATTLE STEERS; MEDIUM 1 300-500 LBS 87.00-102.00 500-700 LBS 78.00-92.00 HEIFERS; MEDIUM 1 300-500 LBS 71.00-82.00 FEW 88.00 500-700 LBS 65.00-77.00 FEW 83.00.

Northern Virginia Area Livestock Summary

(Fauquier) And Staunton Union Richmond, Va.

Tuesday, June 14, 1988

ALL TRENDS COMPARED TO LAST TUESDAY.

SLAUGHTER HOGS 21 HEAD - BARROWS AND GILTS 1.50 HIGHER. BARROWS AND GILTS US 2-4 200-250 LBS 49.50 3-4 250-300 LBS 47.50 2-4 180-200 LBS 47.50.

SLAUGHTER CATTLE 95 HEAD - SLAUGHTER COWS 2.00 LOWER.

SLAUGHTER COWS 76 HEAD CUTTER & BNG.UT. 1-3 43.00-47.75 BRKG.UT. & COMM. 2-4 42.00-50.25 CANNER & LOW CUTTER 1-2 36.00-46.75.

SLAUGHTER BULLS 9 HEAD - 1-2 900-1300 LBS 58.75-60.25 1-2 1300-1600 LBS 55.75 1-2 1600 LBS & OVER 61.50-63.50.

SLAUGHTER CALVES AND VEALERS 10 HEAD VEALERS - HIGH CHOICE AND PRIME 100-250 LBS 95.00-115.00.

LAMBS 190 HEAD - SLAUGHTER LAMBS 1.00 LOWER. HIGH CHOICE AND PRIME 95-125 LBS SPRING 59.00 CHOICE 85-125 LBS SPRING 58.50 SLAUGHTER EWES ALL GRADES 15.00-18.25 SLAUGHTER RAMS ALL GRADES 18.50-18.75.

FEEDER CATTLE 205 HEAD - NO TRENDS REPORTED. STEERS; MEDIUM 1 400-500 89.00-105.00 500-600 80.00-92.00 600-700 76.50 800-900 75.50-78.50.

HEIFERS; MEDIUM 1 SMALL 1 400-500 78.50 --- 500-600 --- 67.00

600-700 68.00-69.75 65.00 700-800 70.50 --- BABY CALVES RETURNED TO FARMS 14 HEAD NEWBORN TO 4 WKS OLD 48.00-87.50 PER HEAD. OVER 100 LBS 93.00-102.00 PER CWT. STATE GRADED FEEDER CATTLE 248 HEAD SOLD AT MARSHALL (FAUQUIER) STEERS; MED.&LARGE 1 MED.&LARGE 2 400-500 99.00 --- 500-600 83.50-93.00 80.50-81.00 600-700 83.50-85.75 75.75-76.50 700-800 80.00 69.00.

HEIFERS; MED.&LARGE 1 MED.&LARGE 2 300-400 77.00 --- 400-500 71.00-80.00 71.00 500-600 79.00 69.50 600-700 69.00-71.50 69.50 700-800 70.00 --- 900-1000 66.00.

Southeast And Central Virginia Area Livestock Summary

Richmond, Va. Lynchburg, Va.

Monday, June 13, 1988

ALL TRENDS COMPARED TO LAST MONDAY.

SLAUGHTER HOGS 24 HEAD - NO TRENDS REPORTED. BARROWS AND GILTS US 2-4 200-250 LBS 48.70.

SLAUGHTER CATTLE 79 HEAD - SLAUGHTER COWS 2.00-3.00 LOWER. SLAUGHTER BULLS MOSTLY STEADY.

SLAUGHTER COWS 68 HEAD CUTTER & BNG.UT. 1-3 45.00-48.75 BRKG.UT. & COMM. 2-4 45.00-49.75 CANNER & LOW CUTTER 1-2 38.00-44.00.

SLAUGHTER BULLS 11 HEAD - 1-2 900-1300 LBS 58.00-59.00 1-2 1300-1600 LBS 55.50-59.25 1-2 1600 LBS & OVER 57.25-61.00.

FEEDER CATTLE 229 HEAD - FEEDER STEERS STEADY TO 3.00 LOWER. FEEDER HEIFERS 4.00-6.00 LOWER. FEEDER BULLS 2.00-6.00 LOWER. STEERS; MEDIUM 1 SMALL 1 MED.&LARGE 2 200-300 --- 79.00-84.00 --- 300-400 90.50-98.50 80.50-84.50 79.50-81.00 500-600 91.00 --- HOLSTEIN STEERS; MED.&LARGE 1-2 300-500 LBS 83.00; 1300-1560 LBS 51.00-54.00.

HEIFERS; MEDIUM 1 LARGE 1 SMALL 1 MED.&LARGE 2 300-400 75.00-78.00 --- 70.50-73.00 71.50-73.00 400-500 --- 72.00-73.00 65.25-70.25 --- 500-600 61.50-64.50 --- FEEDER BULLS; MEDIUM 1 SMALL 1 MED.&LARGE 2 200-300 LBS 94.50-102.00 --- 300-500 LBS 76.75-97.00 70.75-82.25 69.25-73.75

HAY & STRAW SALE

12 Noon Every Wednesday CHANGE OF LOCATION STARTING MAY 25

Located Gum Tree area. Going south on 41, at Cochranville turn left, one block turn right, go about 5 mi. on the right hand side. Watch for sale signs.

Harvey Z. Martin 215-383-6686 (Office) 215-445-5303 (Residence)

OUR BUSINESS IS SERVICE TO FARMERS

Let us help you build a successful marketing program!

Call:

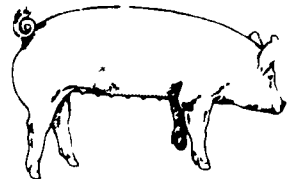
717-761-2740
800-382-1356



Grains & Livestock

• Forward Contracting • Hedging Services

CFS PFA COMMODITY FUTURES SERVICE, INC.



EMERY'S BUYING STATION

OPEN TO RECEIVE YOUR MARKET HOGS

AT THE GREEN DRAGON MARKET RD 4, EPHRATA, PA 17522 1 MILE NORTH OF EPHRATA ON NORTH STATE STREET.

HOURS: MONDAY, TUESDAY, and WEDNESDAY 7:00 A.M. to 11:30 A.M. 215-458-5677 Residence 717-733-9648 Office

215-458-5677 Residence 717-733-9648 Office

YOU ARE PAID FOR YOUR HOGS IMMEDIATELY

Ken & Lois Emery, Proprietors

Green Dragon Livestock Sales



Location: Ephrata RD 4. 1 mile N. on North State St., Ephrata.

COWS COWS COWS SALE EVERY FRIDAY

Lots of good Northern Feeder & Stockers, Slaughter Cows - Bull Steer, Veal-lamb.

11:00 A.M.-Beef Sale 200-300 each week. 1:00 P.M.-Dairy Sale. 7:00 P.M.-Small Animal Sale.

For Special Sales and Herd Dispersals on farm or at our barn or other market information call: Office 717-733-2444, Home 717-838-4318.

WALTER H. RISSER, Proprietor

All out of state and new buyers must have cash or certified check or current letter of credit from bank.

SWINE PRODUCTION SALES AND SERVICE

Feeding Programs And Services To Meet Your Individual Needs

Computerized Record Keeping System

Contracts Available



Supplying Farm Fresh Feeder Pigs

Marketing and Hedging Services

Marketing of Genesis Breeding Stock

Developing Individual Financial Programs

Quality Products And Services - Working For YOU

419 West High Street Elizabethtown, PA 17022

Elizabethtown (717) 367-1525

PA Toll Free 1-800-468-5524

Shippensburg (717) 532-7845