

**YES!!  
ENGLE FORD  
DOES MAKE IT EASIER!!**

Over 100 New & Used  
Trucks, Vans & 4x4's

- 87 Ford F350 Crew Cab, DRW, 4x4 Centurion Conversion
- 86 Ford F350 15 Pass Van V8, AT, PS, PB, AC, Much More, 1 Owner
- 86 Ford F150 4x4 6 cyl, 4 spd, PS, PB, step side only 24,000 miles
- 86 Ford F250 Diesel Automatic, Air, Many More Options
- 86 Ford F250 Super Cab, 4x4, AC, 4 Spd
- 85 Ford F150 4x4, 6 cyl, 4 spd, PS, PB, explorer pkg, sharp 2 tone blue
- 85 Chev C10 Pickup V8, AT, PS, PB, 1 Owner only 39,000 Miles
- 85 Ford Bronco 4x4 V8, AT, PS, PB, AC, Cruise Control, Tilt Wheel, Eddie Bauer Pkg, Plus Much More, 1 Owner Only 32,000 Miles
- 85 Ford Customized Van V8, AT, PS, PB, AC, Much, Much More, Only 21,000 Miles
- 78 Ford LN8000, Cab & Chassis, 3208 Dsl, 5 Spd, 2 Spd Axle, Low Miles

**ENGLE FORD, INC.**

Rt. 147 North  
Millersburg, PA 17061

In PA The Call's On Us 1-800-242-8075  
Out of State Call 1-717-692-4841

**35 TRUCKS & TRAILERS**

**USED TRUCKS**



'87 Chev C-20 Pickup, 350 FI, Auto, PS, PB, AC, AM & FM Stereo, Two-Tone Blue & White, 21,000 Miles. **\$10,500**



'86 Ford F350, Dual Wheels, Stake Body, PS, PB, 4 Spd., 460 Engine, AM/FM Cass, 2 Tanks, Excellent Condition, 40,000 Miles. **\$10,200**



1984 Ford F250, 4x4 Heavy Duty, 8600 GVW, PS, PB, 4 Spd, Radio, 49,000 Miles, 2 Tanks, New Radial Tires, 351 Engine, 1 Owner **\$7,900**



85 GMC 4x4 Dual Wheel, Flatbed, 6.2 Diesel, 4 Spd., PS, PB, AM/FM Cass, Radial Tires, 32,000 Miles, Excellent Condition **\$11,500**

Financing Available

**MARTIN'S AUTO SALES**

725 E. Main St., New Holland, PA 17557  
Office (717) 354-9967 or (215) 445-4519

**1973 Ford C900 cab & chassis, 477 gas engine, PS, air brakes, 35,000 GVW, 5 spd. w/2 spd. rear, \$1,695.**

**Montgomery Co. 215-723-3764 Ask For John**

**5th wheel tandem flat bed trailer with brakes, very good condition. \$1,695 717-432-2971**

**36 REAL ESTATE**

**FOR RENT OR SALE** Large 400'x50' barn, large meadow for steers, hogs, veal, ducks, pheasants, etc Also available 3 or 4 bedroom house and extra acreage York Co 717-382-4171

400-1000 acre farm for conversion to feeder steer operation, with prime alfalfa/corn soil Topographical maps and photos required for consideration For further detail phone Peter Ferraro at 203-869-0106 or 203-322-9037 evenings

Apartment for Rent Loop Road, off 501 north Two bedroom, living room, kitchen and bath Apt newly built Spacious parking with security lighting No pets \$375 per month plus security deposit Available June 1st 393-0646, ask for Jess or 627-2781 after 5pm, ask for Mike.

**ASSUMABLE MORTGAGE!** Come to Maryland's eastern shore and put your own chicken flock to work to pay the bills 44,000 capacity chicken houses in great condition with current contract to grow broilers New 4-bay garage, updated farm house, great outbuildings on over 8 acres \$225,000 Chesapeake Country Associates 301-820-8424

Farm 98 acres, large modern home, beautiful view, cabin & canoeing on creek, Juniata Co \$250,000 717-527-4518 Between 6 & 7 pm

**FOR RENT** 1 bedroom farmhouse apartment, in the Mt Joy area Looking for individual to do farm work, averaging 10 hrs per month, to supplement rent 717-653-4873

**FOR RENT** Barn w/double 4 herringbone milk parlor, 90 free stalls, 2 silos Also additional barn for dry cows, etc Feed available Can be rented now 814-662-2579

**FOR RENT** House, pasture, barn, 80 stalls with 4 silos, liquid manure storage, feed available Available Nov 1, 1988 Chester Co 215-932-8999

**FOR RENT** Hog farm farrow to finish Lanc Co Reply to Lancaster Farming, PO Box 366, R-133, Lititz, PA 17543

114 acre Tioga Co. dairy farm 40 stall barn 115'x36', machinery shed 40'x80', two silos w/unloaders, 18x55 and 14x40. Older heifer barn remodeled farmhouse, all crops grown or in storage included \$125,000 717-537-6423

150 Acre Farm for rent, near Honesdale, PA 50 Stanchion barn, approx 100 acres tillable land Victor, 717-253-0366

175 acre beef or heifer farm in Steuben County near Whitesville, NY Barn, sawmill, small house 607-356-3439

**2,230 ACRE GAME PRESERVE**, Lycoming County, PA \$1,100,000 Two hunting lodges, some cropland, 22 miles of well maintained gravel roads Call Nelson Ebersole 717-867-5221 SUBURBAN REALTY FARM DIVISION 717-867-4487

**FOR SALE** 14 acres, trailer w/large basement, wood room, kitchen & part bath, car garage in basement Tioga Co 12 miles north of Wellsboro turn left in Middlebury Center, 4 miles up Niles Valley Road Good hunting and fishing RD2, Box 111-A, Middlebury Center, PA 16935 717-376-2630

**For Sale** 127 acre farm, 2 springs, Southern York Co 717-993-2364

**For Sale** Dairy farm, Tioga Co, Pa 300+ acres, modern dairy barn, 166 stalls total, 1,500 gal bulk tank, pipeline, auto feeder, 3 large silos, large machinery shed, large workshop/garage, 2 farm ponds, 1 cabin, large 4 bedroom home, 1-1/4 baths, in good condition w/attached 2 car garage 717 549 6822

**For Sale** New York State Finger Lakes area East side Seneca Lake 2 story Greek Revival house Circa 1845 6 acres \$50,000 Owner financing possible 607-582-6874

**For Sale** New York State Finger Lakes area East side Seneca Lake 3 acre wooded building site, 1/2 mile from Lodi Point State Park for access to lake \$12,500 607-582-6874

**House Trailer**, 14 x 70, 2-bedroom, large bath, central air, \$15,000 215-493-3040.

Only 2 miles to a deep river with public boat ramp and manna is this eastern shore Maryland farm 60+ acres of good sassafras soil with well-kept, 2-story, traditional farm house 50% owner financing available \$210,000 Chesapeake Country Associates 301-820-8424

**STEBEN CO, WOODHULL, NY** 5RM+ ranch, excellent condition, on 50 acres for sale by owner 2BR 2 bath full basement & attic, oil/baseboard heat, double garage, pole barn, satellite dish, lovely views \$75,000 Principals only 607-458-5727

**TIOGA CO** Wooded lot \$5000 Spring-access to private LAKE Owner Financing-Great View R Franks RE 717-724-5286

Union County, 140 Acre farm, 2-story house, 5-bedrooms, 45x85 barn, borders Game Lands, excellent fishing & hunting \$235,000 215-884-5363.

**FOR ALL YOUR HAULING NEEDS . . .**

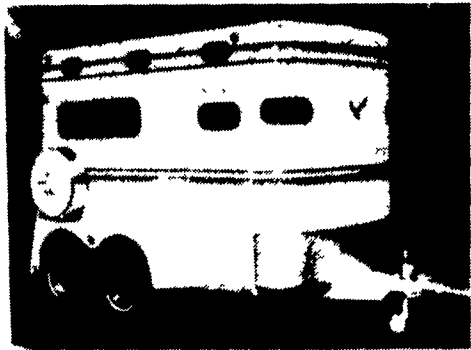
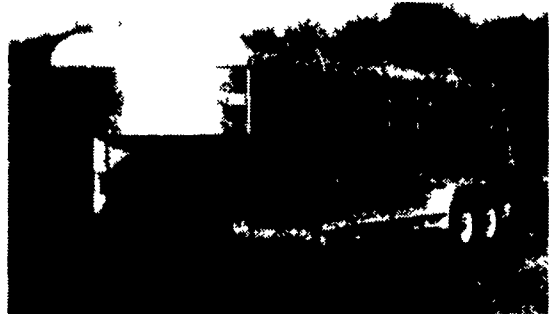
**See Hostetler Truck Bodies & Trailers**



**DeLuxe II Aluminum**

LIVESTOCK TRAILERS

HORSE TRAILERS



**Free Flow Dumping of Silage and Other Bulky Materials . . .**



Hi-clearance hydraulic tailgate combined with smooth tapered sides (3" wider at rear) makes dumping bulky materials fast and easy

**Gooseneck Grain Trailer**

16' Tandem Dual **\$8800**



**Gooseneck Flatbeds (All Sizes & Capacities)**

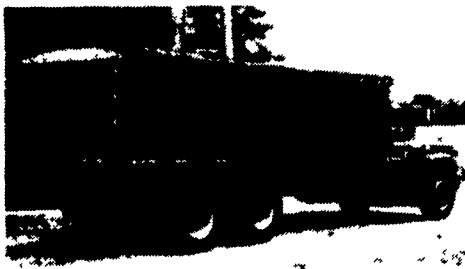


**Utility Trailer**

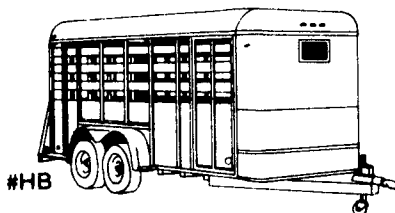
Single Axle As Low As \$695

**KNAPHEIDE FARM BODIES**

Call For Special Prices



**Moritz Livestock Trailers**



**Hostetler Truck Bodies & Trailers**

Rt 322 Milroy PA 17063 **717-667-3921**

**HISTORIC PENNSDALE, CIRCA 1804**

The house has been kept in splendid original condition. The estate includes a field stone springhouse, circa 1791. In addition, there is a stocked pond, a fairly new swimming pool, small barn, picnic pavilion & 13 acres ML. Shown by appointment.

**Peggy L'heureux Real Estate**  
1 West 3rd St.  
Williamsport, PA 17701  
717-326-6541