

**Philadelphia Vegetables**

Wednesday, June 15, 1988

ARTICHOKES CA ctn 24s 18.00 36s 17.00.  
 ASPARAGUS SUPPLIES LIGHT WA 30-lb crt Long Green WAExFcy lge & std 32.00 NJ Pyramid crt bchd 12s Field Run med-lge 28.00-30.00 sml-med 25.00.  
 BEANS SUPPLIES LIGHT various bu containers Round Green type unless otherwise stated SC 18.00 ord cond 5.00-8.00 GA 18.00-20.00 NC & VA 18.00.  
 BEANS-FAVA CA bucr 17.00.  
 BEETS NJ crt bchd 12s 6.00-7.00 few 7.50-8.00 25-lb film bags topped 6.00.  
 BROCCOLI SLIGHTLY HIGHER CA ctn bchd 14s 8.00-9.00 mos 8.50 18s 9-9.50 one label 10.50.  
 CABBAGE ABOUT STEADY 1-3/4 bucrn & crt medium Green unless otherwise stated MD & DE 6.50 NC 5.50-6.50 mos 5.50-6.00 few 5.00 Savoy type 8.00 Red 8.00 NJ 5.00-6.00 mos 5.50 VA 6.00 NY 50-lb sacks lge 8.50.  
 CARROTS ABOUT STEADY 48-1 lb film bags in film sacks CA med-lge 9-9.50 mos 9.00 few hgr med 8.00 FL med 7.50-8.50 sml-med 6.50-7.00 50-lb sacks lse jbo CA 10.00-10.50 FL 9-9.50 50-lb ctn lse jbo CA 12.00 ctn bchd 24s CA 10.50 miniature type 20-12 oz film bags OH few 10.00.  
 CAULIFLOWER HIGHER CA ctn film wrpd 9s 7.00-8.00 ord-fair cond 3 00-5.00 12s 8.00-9.00 mos 8.00 one label high as 9.50 ord-fair cond 4.00-6.00 16s ord-fair cond 3.00-5.00.  
 CELERY ABOUT STEADY CA ctn 1-1/2 doz 12.00 2 doz 12.00-13.00 mos 12.00 one lot 15.00 2-1/2 doz 12.00-13.00 mos 12.00 few 13.50 one lot 15.00 FL crt & ctn 2-2-1/2 doz 11.00.  
 CHINESE CABBAGE CA 50-lb ctn Nappa 11.00-12.00 Bok Choy few 12.00 fair cond 8.00.  
 CORN HIGHER wirebound crt approx 4-1/2 doz FL Yellow 8.50-9.00 fair appear 7-7.50 fair cond 5.50-6.50 fair qual 5.00-6.00 White 9.50-11.00 mos 10.00-10.50 GA Yellow few 8.00 White few 10.00.  
 CUCUMBERS LOWER 1-1/9 bucrn & ctns Waxed med unless otherwise stated GA 16.00-18.00 fair cond 10.00 fair qual 10.00-12.00 ord qual 5.00-6.00 Pickles unwaxed med-lge 20.00 FL fair appear 16.00 fair qual & appear 8.00-10.00 sml fair appear 10.00-12.00 NJ Pickles unwaxed Mixed sizes 20.00.  
 EGGPLANT SUPPLIES LIGHT FL 1-1/9 bucrn sml 12.00 GA 5/9 bucrn Italian type 10.00.  
 ENDIVE NJ 1-1/9 bucrn 6.00-8.00 pre-cooled 10.00 OH 1-1/9 bucrn 10.00 CA ctn 24s 11.00.  
 ESCAROLE SUPPLIES LIGHT NJ 1-1/9 bucrn 11.00-13.00 OH 1-1/9 bucrn 10.00  
 GARLIC MEXICO per lb 30-lb ctn Chileno Colossal 75 cents White jbo 75 cents.  
 GREENS ABOUT STEADY crates approximately 1-1/2 bu bchd unless otherwise stated NJ Collards 5.00-6.00 mos 5.50-6.00 Mustard & Turnip Tops 5.00-6.00 Kale 5.50-6.00 few 6.50-7.00 Rape 5.00 PA Collards, Mustard, Turnip Tops, Kale & Rape 5.50 CA 24s Kale Red 16.00-17.00 mos 16.00  
 LEEKS NJ crt bchd 12s 10.00-12.00 CA ctn bchd 12s 12.00.  
 LETTUCE ICEBERG ABOUT

STEADY ctn 24s unless otherwise stated CA 12.00-13.00 fair appear 11.00 film wrpd 13.00-14.00 30s 11.00-12.00 fair cond low as 10.50 NJ 6.50-8.00 fair qual 5.00 ROMAINE ABOUT STEADY CA 24s ctn 9.50-10.00 few 9.00 one lot 7.00 crt 12.00 NJ crts & ctn 24s 5.00-6.00 mos 5.00 few 4.00 sml 3-3.50 OH ctn 24s 5.00-6.00 BIG BOSTON CA ctn 24s 7.00-8.00 few 6.00 OH crt 24s 5.00-6.00 BIBB NJ & OH crt 24s 5.00 LEAF CA ctn 24s includ Red 9.00-10.00 NJ crt 24s includ Red 5.00 OH crt 24s 5.00-6.00.  
 OKRA SUPPLIES INSUFFICIENT TO QUOTE.  
 ONIONS-GREEN ABOUT STEADY NJ 4/5 bucrn bchd 48s 9.00-10.00 CA ctn bchd 48s 10.00-10.50 MEXICO ctn bchd 48s 9.00-10.00 mos 10.00 few low as 8.00.  
 PARSLEY ABOUT STEADY bchd 5 doz curly unless otherwise stated NJ bucrn 8.00-9.00 few 10.00 Plain 7.00-8.00 CA ctn 10.00 MEXICO ctn 8.00-9.00.  
 PEAS-GREEN CA bucrn 10.00.  
 PEAS-SOUTHERN NO SUPPLIES.  
 PEAS-SUGAR 10-lb ctn per lb CA includ via air 1.40-1.60 mos 1.50 fair cond 1.00-1.20 Sugar Snap 1.50-1.60 GUATEMALA 1.40-1.60.  
 PEPPERS LOWER 1-1/9 bucrn & ctns Calif Wonder type Green unless otherwise stated FL exlge 6.00-7.00 fair cond 4.00-5.00 lge 5.00-6.00 fair cond 3.00-4.00 med 4.00-5.00 sml 3.50-4.00 fair cond low as 2.00 fair qual 2.50 Mixed Red lge 4.00-5.00 fair cond 3-3.50 TX exlge 8.00 lge 5.00-6.00 med 4.00-5.00 GA exlge 6.00-7.00 lge 6.00 med 4.00-5.00 5/9 bucrn Jalapeno 10.00 LA bucrn exlge 6.50-8.00 mos 7-7.50 NETHERLANDS 5 kilo ctn Red lge 20.00-23.00.  
 RADISHES LOWER Red ctn 30-6 oz film bags unless otherwise stated OH 4.50-5.00 mos 5.00 bchd 24s 5.00-6.00 mos 5.00 White 24-8 oz film bags 7.00.  
 SPINACH SLIGHTLY HIGHER Savoy type NJ bucrn 7.00-8.00 few 6.00 fair cond 4.50-5.00 PA 1-1/4 bucrn 6.00 flat type CA ctn bchd 24s 8.00-9.50.  
 SQUASH ABOUT STEADY 1/2 & 5/9 bucrn & ctn NJ Zucchini sml-med 6.00-8.00 fair cond 4.00 med 5.50 Yellow Straightneck sml-med one lot 7.00 GA Zucchini sml-med 6.00-7.00.  
 SWEET POTATOES SUPPLIES INSUFFICIENT TO QUOTE.  
 TOMATOES ABOUT STEADY 25-lb ctn Pink to Light Red 85% US#1 or better unless otherwise stated SALES BY REPACKERS FL 5x6s 8.50-10.00 6x6s 7.50-9.00 6x7s 7.50-8.00 SALES BY OTHERS FL 5x6s 8.50-9.00 mos 9.00 fair cond 6.00-7.00 6x6s 7.00-9.00 mos 8.00 6x7s 7.50 fair qual 5x6s 5.50-7.00 6x6s 5.00-6.00 GA 5x6s fair cond 6.00-7.00 CANADA 8-lb bkt hothouse grown Red 1.00 CHERRY TYPE 12-1 pt flats FL 12.00-13.00 mos 12.00 SC 15.00 MEXICO 13.00  
 TURNIPS NJ 25-lb film bags topped med 4.50.

GREENS (COLLARDS & KALE) 3 00-5.00 12's-18's.  
 LETTUCE 2.50-5.50 18-24'S  
 ONIONS 8.50-12.00 40 CT. BUNCH.  
 PEAS (HULL) 16.00-21.00 BU, 28 LBS.  
 RED BEETS 4.00-7.75 15 CT BUNCH.  
 RIIBARB 4.00-8.00 15 CT BUNCH  
 SPINACH 8.00-12.50 13-15 LBS.  
 STRAWBERRIES 12.00-14.00 8 QT FLAT  
 SUGAR PEAS 14.00-20.00 1/4 BU. 10#.  
 SUGAR SNAPS 12.00-15.75 1/4 BU., 10#.  
 TOMATOES 22.00-33.00 25# #1 GREENHOUSE.  
 TURNIPS 2.00 25 LBS.  
 ZUCCHINI (GREEN) 8.00-12.00 1/4 BU.; (YELLOW) 4.50-8.00.

**Shippensburg Produce Auction**

(717) 530-1700  
 Shippensburg, PA  
 June 9, 11 & 14  
 Report Supplied by Auction  
 APPLES 2.00-3.25 1/4 BU.  
 ASPARAGUS 12.00-16.50 12# BOX.  
 BEDDING PLANTS 2.25-4.00 FLAT.  
 BROCCOLI 5.00-9.50 BU.  
 CANTALOPES .60-.62 EA.  
 CAULIFLOWER .52-.88 EA.  
 CHERRIES (SWEET) 7.75-9.00 8 QT. FLAT.  
 EGGS 33-.52 DOZ.  
 LETTUCE (LEAF) 2.00-2.75 BU.; (HEAD) 2.00-4.00 BU.  
 ONIONS (SPRING) 9.50-12.00 40 BU BUNCH.  
 PEAS (HULL) 6.00-8.50 1/4 BU  
 POTATOES 2.00-2.75 50 LBS.  
 SPINACH 4.00 1/4 BU.  
 STRAWBERRIES 6.00-12.50 8 QT. FLAT.  
 STRING BEANS 12.50 1/4 BU.  
 SUGAR PEAS 5.75-16.50 10 LB BOX

SUGAR SNAPS 12.00 1/4 BU.  
 TOMATOES (FLA.) 5.50-7.25 25 LBS.  
 WATERMELON (FLA.) 2.20-2.50 EA

**Buffalo Valley Hay**

Mifflinburg PA  
 Saturday, Feb. 20, 1988  
 Report Supplied by Auction  
 CABBAGE: A FEW 3.00-4.00 A BUSHEL.  
 BEDDING PLANTS: 2.50-4.00 A TRAY, A FEW AT 7.25.  
 10" HANGING BASKETS: 5.00-6.75.  
 LETTUCE (LEAF & HEAD): A FEW 2.00-3.25 A BUSHEL.  
 ONIONS, NEW: 10 BUNCH BOX 2.00-4.00.  
 BIDALLIA: 7.25-7.50 50 LB. BAG.  
 POTATO, NEW RED: 7.50-8.00 50 LB. BAG.  
 POTATO, NEW WHITE: 7.25 50 LB BAG.  
 STRAWBERRIES: 8.50-10.75 8 QT. FLAT.  
 SUGAR PEAS & SNAPS: 8.75-11.20 10 LB. BOX.  
 TOMATO, 6X6: 9.00-9.50 25 LB. BOX, 5X6: 10.00-14.50 25 LB. BOX.  
 WATERMELON, CRIMSON SWEET: MEDIUM 2.70-3.50 EA., LARGE 3.75-4.00.

**King's Hay**

Kirkwood, Pa.  
 Tuesday, June 14, 1988  
 Report Supplied by Auction  
 TOTAL LOADS: 15.  
 NEW CUT ALFALFA: 38.00-76.00.  
 NEW CUT ALFALFA MIXED: 61.00.  
 NEW CUT CLOVER & TIMOTHY: 55.00.  
 NEW CUT TIMOTHY: 70.00.  
 NEW CUT MIXED: 87.00.  
 GRASS MULCH: 29.00-44.00.  
 EAR CORN: 104.00.

**Good's Hay**

Leola, Pa.  
 Wed., June 15, 1988  
 Report Supplied by Auction  
 TOTAL LOADS: 59.  
 ALFALFA: 62.00-208.00.  
 MIXED HAY: 49.00-152.00.  
 TIMOTHY: 68.00-99.00.  
 EAR CORN: 112.00-131.00.  
 REED'S .CANARY GRASS: 46.00.  
 STRAW: 68.00-100.00.

**New Holland Dairy**

New Holland Sales Stables  
 Wednesday, June 15, 1988  
 Report supplied by auction  
 REPORTED RECEIPTS OF 138 COWS, 25 HEIFERS, AND 2 BULLS. BETTER COWS STEADY; BALANCE LOWER.  
 LOAD OF PA FRESH COWS, 780 00-1070 00.  
 LOAD OF CANADA FRESH COWS 770 00-900 00, SPRINGERS 885.00-1200 00  
 LOAD OF PA FRESH COWS, 680 00-1100 00  
 LOAD OF NY FRESH COWS, 660 00-1500 00.  
 HERD OF 80 HEAD, ALL STAGE COWS 690 00-1400 00.  
 LOCALLY CONSIGNED COWS 490 00-990 00  
 SPRINGING HEIFERS 700 00-1080 00.  
 BULLS 500 00-670.00

**Leola Produce Auction**

Leola, PA  
 Tues., June 14, 1988  
 Report Supplied by Auction  
 ASPARAGUS 95-1 80 12 OZ BUNCH  
 BEDDING PLANTS 2 50-5 00 FLAT  
 BROCCOLI 4 50 8 00, 12-14 CT  
 CABBAGE 4 50-6 50 50 LBS  
 CAULIFLOWER 27- 53 HD

**PAUL B. Zimmerman INC.**

**THE HOT SUMMER IS HERE!**

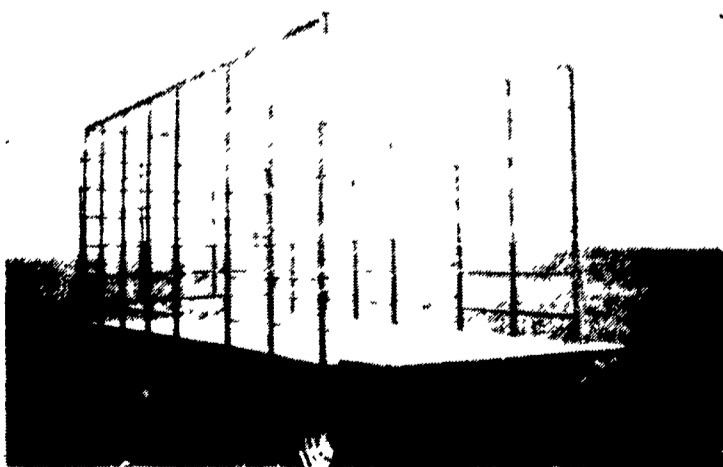
**Dayton VENTILATING FANS**

**FOR FARM-HOME-INDUSTRY**

**10% OFF ON FANS NOW IN EFFECT THROUGH JUNE**



**HAY WAGONS FOR SALE**  
 STEEL SIDES



3 Sizes Available...16', 18', 20'  
 with or without running gear  
 • Also will fit sides onto your flat wagon

MFD. BY: **STOLTZFUS WOODWORK**  
 Rt. 897 North.— Gap, PA 17527  
 717-442-8972

**PAUL B. ZIMMERMAN, INC.**

Hardware • Farm Supplies  
 Custom Manufacturing • Crane Service

295 Wood Corner Rd. Lititz, PA 17543

1 Mile West of Ephrata

Phone: 717-738-1121

WE SHIP UPS