

For Sale 1985 Tr axle Mack, 19' alum body, 20 F 58 R 300 engine, 6SP, \$55,000, 1987 Komatsu D14 S track loader, 2 yd cab, 900 hrs, 1 year old, has 3 yr warranty, \$55,000 Call 215-493-3040

Lancaster Farming, Saturday, June 11, 1988-837



1986 FORD E350
14 ft., flat floor hi cube, dual wheels, Michelin tires, H.O 351, AT, PS, PB, AC, 10,000 GVW, 22,000 miles.
\$11,900



1986 DODGE B250
Maxi Cargo, 6,400 GVW, 318 AT, PS, PB, AC, 27,000 Miles.
\$8,500



1987 FORD E250
Cargo 7,800 GVW, EFI 302, AT, PS, PB, AC, 9,800 Miles.
\$10,300

1973 Ford C900
cab & chassis, 477 gas engine, PS, air brakes, 35,000 GVW, 5 spd. w/2 spd. rear, \$1,695.

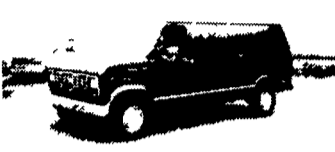
Montgomery Co.
215-723-3764
Ask For John



1967 U-600 Mack 673 engine rock body in good condition 10R20 tires 52,000 GVW quad box, good running condition \$13,900.
Days 717-532-2857, night 717-532-4350.



1987 FORD E350
Cargo, 9,600 GVW, 6.9 Diesel, AT, PS, PB, 23,000 Miles.
\$10,700



1988 FORD E150
Cargo, 6,500 GVW, EFI 300, AT, PS, PB, 3,000 Miles.
\$10,700



1986 FORD E250
Cargo, 7,800 GVW, 300, AT, PS, PB, 61,000 Miles.
\$6,800

5th wheel tandem flat bed trailer with brakes, very good condition.
\$1,695
717-432-2971

1981 GMC GENERAL TRACTOR
435DD, 13 Speed, Rayco Suspension, 11x24.5 Tires, 212 WB, Sleeper
NORMAN D. CLARK & SON
717-734-3682



1975 GMC 7500 Single Axle Cab & Chassis, V-71 Detroit Diesel, 5x2 Trans., P.S., Air Brakes, 11.00-20 Tires, 33,000 GVW.
\$8,800

FOUR WAY AUTO SALES

P.O. Box 444, R.D. #3 New Holland, PA 17557
(717) 354-3199

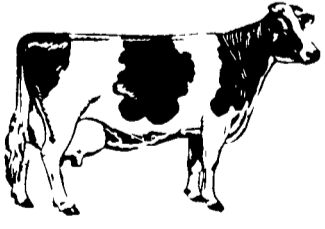


ALUMINUM GOOSENECK TRAILERS



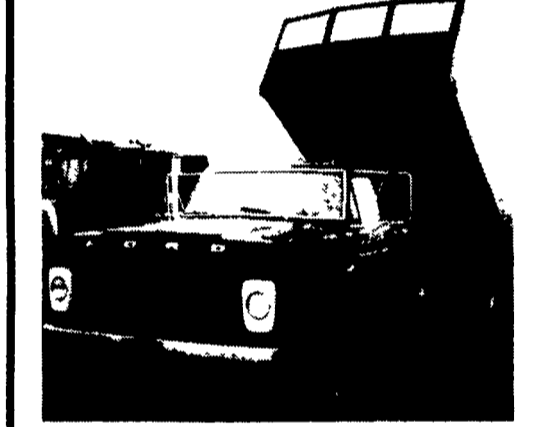
20' Gooseneck Trailer

A versatile, lightweight, Eby aluminum stock trailer is built to provide years of maintenance free service. An Eby trailer is custom built to fit your individual hauling needs - No mass production! We use only quality components and strong alloy aluminum to manufacture what may be the last trailer you'll ever buy.



We Salute The Dairy Farm Families, A Vital Part Of Our Business

- **LIGHTWEIGHT** - Eby stock trailers are 25-35% lighter than comparable steel trailers. Less weight means better fuel mileage or increased payload.
- **MAINTENANCE** - Eby aluminum trailers won't rust. Welding and painting can cost you dollars in down time and repairs.
- **DURABILITY** - Eby trailers are built tough. Quality components and 6061 alloy aluminum provide the ruggedness required in a livestock trailer.



1976 Ford F700 Single Axle Flat Bed Dump, 391 Gas, Auto, P.S., Air Brakes, 10.00-20 Radials, 14'6" Flat Bed Dump
\$8,500



Curry Supply Co

CURRYVILLE, PENNSYLVANIA 16631
PHONE (814) 793-2829
(814) 793-4481

USED EBY ALUMINUM LIVESTOCK BODIES SALE



- 14' Eby Cattle Bed 6'3" High Inside Rear Roll Up And Drop Ramp
- 30' Eby Aluminum 7'2" Height Set Up To Double Deck
- 17' Eby Aluminum 6'6" Height

BRAND NEW '88
24'x8'x6'6"
C.A. 174"
PRICED TO MOVE

1982 R model Mack 36 sleeper 315 engine, Jake brake HT012513 trans, 11x24.5 Budds rad tres, power steering, air cond., 417,000 miles 112,000 miles engine overhaul 50,000 miles factory reman trans \$32,000
717-433-3269

1983 Chevy C10, 6 cyl, 3 spd, PS PB, AM-FM 59,000 miles, blue, nice condition \$4,500
Cumberland Co 717-532-7887

1984 F150 4x2, 300 CI, 47,000 miles, MD inspected, new bed liner, towing package, Asking \$5,600 Carroll Co, MD 301-751-1170

1965 Amer La France Fire Truck, 1250 GPM pump, 1000 gallon water tank, completely equipped for 30 men, 2 booster reels auto rewind, 300 ft 1" booster hose River Plaza Hose Co Best Offer 201-741-8109

1970 Ford C700, 330 V8, 5+1, 900x20, 90,000 miles w/or without 20' steel flat bed Boonsboro, MD 301-432-8419 7 to 8 a.m or Evenings



M.H. EBY, INC.

Box 127, Blue Ball, PA 17506

717-354-4971



M.H. EBY, INC.
P.O. Box 127
Blue Ball, PA 17506
(717) 354-4971