

**1 FARM EQUIPMENT**

**COMBINES**

JD 7720, 216 Flex Head & 8R 30" Com Head  
 NH TR95 w/3 Heads  
 JD 1975, 7700 w/215 Flex Head  
 JD 15' Rigid Platform  
 AC 4RW Cornhead for M or M2

**TRACTORS**

IH Farmall H  
 IH Cub 154 Loboy

**PLANTING EQUIP.**

AC 8R No-Till w/Liq. Fert. & Hydraulic Markers  
 AC 330 4 R Planter  
 JD 7000 Cons. Model 6R-30" Dry Fert. Insect, Monitor & No-Till  
 JD 7000, 8RN No-Till Liq. Fert.  
 JD FBB Drill 17x7

**MISC.**

JD 347 Wire Baler  
 IH 7' Sickle Bar Mower  
 Nitrogen Applicator w/Tanks  
 AC 14' Disk Harrow  
 JD 3800 Forage Harvester  
 (2) IH #60 Stalk Shredders

**Cooper Ent., Inc.**

Cecilton, Md.  
 301-275-2195



**KELLER'S FARM MACHINERY**

116 Richlandtown Pike  
 Quakertown, Pa. 18951  
 215-536-4046

**USED TRACTORS**

Case IH 1594, 200 Hrs.	JD 3010 DNFE
Ford 7710, C.A.	JD 2010 GNFE
Ford 7700 w/Cab	IH 574 w/Loader
Ford 6600, 4WD	MF 175 D 8 speed
Ford 3910 4x4 w/ Ldr.	MF 150 G P. Steering
Ford 3910	MF 30B LBH
Ford 3600	Ford 5600 4WD, Loader
Ford 3550 w/Loader	Ford 5000 w/Cab
Ford 3400 w/Loader	Ford 3000 w/Blade
Ford 2600 G	Ford 1100 4WD
Ford 1710 LBH	Ford 420 w/loader
Ford 1710, 4WD	Ford 4000 w/Loader
Ford 1300 w/Mower	Ford 2810 600 hrs.
Ford 801, P.S.	Ford 2110 500 hrs.
Ford 445 w/Loader	(3) Ford 8N's
Ford 4000 D PS	(?) Ford 9N's
Ford 3000 8 speed	IH Cub w/Mower
Ford 2310 w/loader	MF 2200 w/Ldr.
JD 1520 Gas	Satoh 650 P.S.
	AC 5020
	AC 160 D



**Kubota L245H - Only 358 hrs. with cult. & fert. attach. 717-256-3309**

**NH Model 853 Round Baler**  
 All options.  
 One owner operator made 363 bales.  
 Asking \$11,000  
 201-948-4693  
 Sussex Co., NJ

**3 SILOS AND UNLOADERS**

- \* Dismantle, Move and Re-Erect Pre-owned Harvestore® Structures
- \* Pre-owned Harvestore® Units In Stock
- \* Brand New, Complete Rebuilt Kits For Structures
- \* Totally Rebuilt Goliath® and Hercules® Unloaders
- \* All Types, Sizes and Models Of Used A.O. Smith Unloaders In Stock
- \* Used Unloader Parts
- \* Leasing and Trade-Ins Accepted

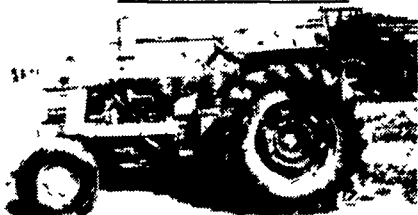
**GLASSLINED STRUCTURE ENTERPRISE**  
 2169 Main Street, Rothsville, PA 17543  
 (717) 626-0036

**Financing Available Thru Agri Credit Corp.**

**35 Used Combines To Choose From**

1984 MF 860 Hydro .....	\$32,000	1973 MF 510 Gear .....	\$3,500
1984 MF 850 Hydro .....	\$38,000	1973 MF 510 Gear .....	\$5,000
1984 MF 850 Hydro .....	\$32,000	1972 MF 760 Gear .....	\$5,000
1982 MF 860 Hydro .....	\$24,000	1971 MF 510 Gear .....	\$3,000
1980 New Idea 801 Diesel 4 Wheel Drive Power Unit .....	\$22,500	1969 MF 510 Hydro .....	\$7,500
1980 MF 760 Hydro .....	\$28,000	1966 MF 510 Diesel .....	\$2,500
1980 MF 540 962 Hrs. ....	\$15,000	Oliver 525 w/2 Heads .....	\$1,500
1978 MF 760 Hydro .....	\$16,000	IH 91 w/2 Heads .....	\$1,200
1978 MF 760 Hydro .....	\$16,000	MF 82 .....	\$700
1978 JD 7700 Hydro .....	\$16,000	1980 New Idea 844 4 Row 30" Com Head	
1978 JD 7700 Hydro .....	\$15,000	JD 6 Row 30" Com Head	
1977 MF 750 Gear .....	\$16,000	JD 15 Ft. Flex Head MF 6 Row 30" Com Head	
1977 MF 760 Hydro .....	\$15,000	JD 20 Ft. Flex Head MF 4 Row 30" Com Head	
1977 MF 750 Gear .....	\$14,000		
1976 MF 760 Hydro .....	\$11,000		
1975 MF 760 Hydro .....	\$6,500		
1974 MF 760 Hydro .....	\$7,500		
1973 MF 760 Hydro .....	\$6,000		

**USED TRACTORS**

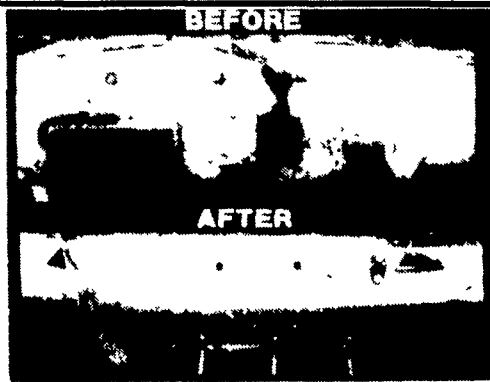


JD 2240 w/Cab .....	\$7,500	Glenco 12 Ft. Transport Disc .....	\$6,200
JD 5010 .....	\$4,500	Glenco 7 Tooth Soil Saver .....	\$3,900
MF 1135 .....	\$7,500	MF 351 19 1/2 ft. Soil Finisher .....	\$5,200
MF 50A TLB .....	\$12,500	Landoll 10 ft. Soil Finisher .....	\$3,200
MF 85 Gas .....	\$2,500	Danuser Post Driver .....	\$1,650
MF 1130 .....	\$4,500	Danuser Post Hole Digger .....	\$640
MF 1080 .....	\$4,500	Danuser Wood Splitter .....	\$780
MF Super 90 Dsl .....	\$2,900	MF 82, 3-16 Plow .....	\$600
MF 1650 Garden Tractor w/Mower .....	\$1,850	MF 880 Hyd. Reset 6-16 Plow .....	\$4,650
MF 1150 .....	\$5,000	MF 41 3 pt. Sickle Bar Mower .....	\$2,400
		EZ Trail 6 Ton Running Gear .....	\$550
		EZ 475 Bu Self Unloading Grain Cart .....	\$6,400
		MF 820 Hyd 19 ft Wing Disc .....	\$8,500
		NH 472 Haybine, Like New .....	\$4,000
		JD 336 Baler .....	\$2,600
		Dunham Front End Ldr .....	\$1,500
		48" Demo 3 Pt Rotary Tiller .....	\$1,075
		6' Rotary Cutter .....	\$525
		New 8' Myer Snow Plow to fit Farm Tractor .....	\$1,400
		Mott 6' 3 Pt Flail Mower .....	\$1,150
		JD 2R 3 Pt. Cultivator .....	
		IH 4R Fast Hitch Cultivator .....	

**SCHMIDT "HEAVY DUTY REBUILT TABLE AUGER"**

Get Your Table Auger Repaired For Your Combine. Replace Complete Section. Same As New. All Makes And Models. Why Buy New, Get Your Auger Repaired SAVE!!!

Call Now For Appointment And Price Quotation To Have Your Auger Repaired

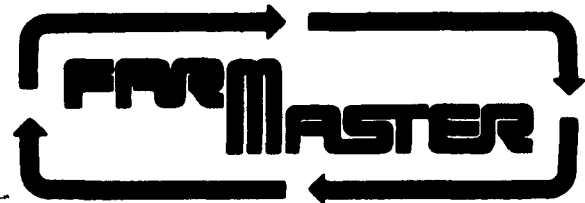


**M.M. WEAVER & SONS, INC.**

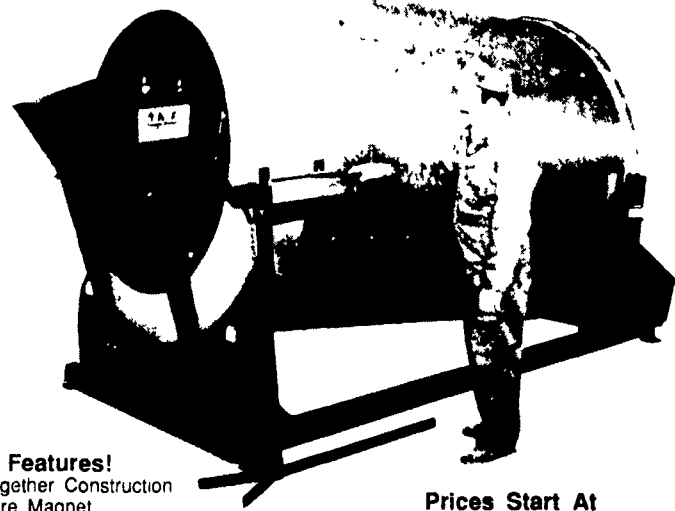
Leola, PA 17540

(717) 656-2321

Located 4 miles West of New Holland on Route 23. 1 1/2 miles Northeast of Leola on the North Groffdale Road. 1 mile on the right, opposite Groffdale Mennonite Church



**TMR MIXERS - 10 SIZES!**



- Features!**
- Bolt Together Construction
  - Hardware Magnet
  - Easy Maintenance and Lubrication
  - Fewer Moving Parts Than Any Other Mixer
  - Plastic Auger Tube Liner
  - Reliable Mechanical Beam Scale System
  - Standardized Component Parts

Prices Start At \$3,950  
 Up To \$12,000 Depending On Model

**ZIMMERMAN'S FARM SERVICE**

1/2 Mile West Off Rt. 301 On School Road, Bethel, PA  
 Phone 717-933-4114