

Southeast & Central Virginia Livestock

Lynchburg, Virginia
Tues., May 30, 1988

ALL TRENDS COMPARED TO LAST MONDAY.
SLAUGHTER HOGS 14 HEAD - NO TRENDS REPORTED. BARROWS AND GILTS US 2-4 200-250 LBS 49.50 SOWS US 1-3 300-500 LBS 35.75 500 LBS & OVER 36.50.
SLAUGHTER CATTLE 63 HEAD - SLAUGHTER COWS 1.00-3.00 LOWER. SLAUGHTER BULLS MOSTLY STEADY.
SLAUGHTER COWS 44 HEAD CUTTER & BNG.UT. 1-3 46.00-49.00 BRKG.UT. & COMM. 2-4 47.25-51.25 CANNER & LOW CUTTER 1-2 39.25-44.00.
SLAUGHTER BULLS 4 HEAD - 1-2 900-1300 LBS 50.75 1-2 1300-1600 LBS 58.00-61.25 1-2 1600 LBS & OVER 59.25.
SLAUGHTER CALVES AND VEALERS 15 HEAD CALVES - GOOD AND CHOICE 250-500 LBS 78.00-84.50 FEEDER CATTLE 118 HEAD - FEEDER STEERS 2.00-4.00 LOWER. FEEDER HEIFERS MOSTLY STEADY. STEERS, SMALL 1 MED.&LARGE 2 300-400

76.00-79.00 80.00-86.75 400-500 76.00-84.25 --- 500-600 --- 82.50-90.00
HOLSTEIN STEERS; MED.&LARGE 1-2 300-500 LBS 81.00-86.00; 500-700 LBS 76.00-76.25.
HEIFERS; LARGE 1 SMALL 1 MED.&LARGE 2 300-400 --- 73.75-79.00 79.00-82.00 400-500 --- 76.50-80.50 --- 600-700 71.75 --- FEEDER BULLS; MEDIUM 1 LARGE 1 SMALL 1 MED.&LARGE 2 200-300 LBS 104.00-105.00 --- --- 300-500 LBS 78.25-97.00 80.25-87.50 73.50-77.75 74.00-86.75 500-700 LBS --- --- 78.25-78.50 COWS RETURNED TO FARMS 2 HEAD; M-2, 5-12 YR OLD 650-675 LBS 310.00 PER HEAD. COWS WITH CALVES AT SIDE 11 PAIR; M&L-1, 4-8 YR OLD 850-1075 LBS WITH CALVES 100-275 LBS 660.00-695.00 PER PAIR.
BABY CALVES RETURNED TO FARMS 13 HEAD NEWBORN TO 4 WK OLD 80.00-140.00 PER HEAD.
STATE GRADED FEEDER CATTLE 52 HEAD SOLD AT LYNCHBURG STEERS; MED. & LARGE 1 MED.&LARGE 2 300-400 93.00-111.00 95.50 400-500 95.00 88.50-95.25 500-600 92.00-93.50 87.00-93.00 600-700 79.75-85.50 83.50-88.00 700-800 75.50-77.50 76.50 800-900 72.50 --- HEIFERS; MED. & LARGE 1

MED.&LARGE 2 300-400 88.00 85.00-86.25 400-500 --- 84.25.

Southwest Virginia Area Livestock

Wytheville, Virginia
Tues., May 31, 1988

ALL TRENDS COMPARED TO LAST TUESDAY.
SLAUGHTER CATTLE 86 HEAD - SLAUGHTER COWS STEADY TO 1.00 LOWER.
SLAUGHTER COWS 82 HEAD CUTTER & BNG.UT. 1-3 45.00-51.00 BRKG.UT. & COMM. 2-4 45.75-50.00 CANNER & LOW CUTTER 1-2 43.00-46.00.
SLAUGHTER BULLS 4 HEAD, 1-2 900-1300 LBS 53.75-55.50 1-2 1600 LBS & OVER 54.75.
LAMB 86 HEAD - SLAUGHTER LAMBS 10 00 LOWER. HIGH CHOICE AND PRIME 95-125 LBS SPRING 55.75 CHOICE 85-125 LBS SPRING 53 00 SLAUGHTER EWES ALL GRADES 19.50-21.00.
FEEDER CATTLE 100 HEAD - NO TRENDS REPORTED. STEERS; MEDIUM 1 SMALL 1 MED.&LARGE 2 400-500 --- --- 76.00-84.50 500-600 85.50 75.00 --- 600-700 83.50 78.50 --- 700-800 --- --- 70.00-73.00 800-900 72.00 --- --- HEIFERS; MED.&LARGE 2 400-500

78.00-80.00 FEEDER BULLS; MED.&LARGE 2 500-700 LBS 67.00-68.00 COWS WITH CALVES AT SIDE 2 PAIR; L-1, 6-8 YR OLD 900-1100 LBS WITH CALVES 100-200 LBS 675.00 PER PAIR. BABY CALVES RETURNED TO FARMS 45 HEAD NEWBORN TO 4 WK OLD 70.00-150.00 PER HEAD.

Shenandoah Valley Livestock

Harrisonburg, Va.
Sat., May 28, 1988

Report supplied by auction

STEERS: M&L-1 300-500 LBS. 97.00-114.00; 500-700 LBS. 85.00-90.00; 700-1000 LBS. 70.00-76.25; HOLSTEIN 300-1000 LBS. 75.00-84.00. S-L&M&L-2 300-500 LBS. 90.00-96.00; 500-700 LBS. 75.00-84.00.
FEEDER BULLS: M&L-1 300-500 LBS. 50.00-82.00; 500-700 LBS. 50.00-73.00.
HEIFERS: M&L-1 300-500 LBS. 80.00-85.00; 500-700 LBS. 73.00-77.50; 700-1000 LBS. 65.00 & DOWN.
STOCK COWS- BEEF 800.00 & DOWN; BABY CALVES- 167.00 & DOWN.
SLAUGHTER COWS TREND: UTILITY & COMMERCIAL 2-4 45.00-49.00; CANNER & CUTTERS 1-3 39.00-45.00. SLAUGHTER BULLS: 1&2 57.75-60.75.
LAMBS: BLUE O HIGH CHOICE & PRIME 61.80; RED O CHOICE 66.00; FEEDER LAMBS CHOICE 64.00-75.00; SLAUGHTER EWES 20.00-24.25.
HOGS: SOWS 1-3 200-240 LBS. 47.50; SOWS 1-3 31.00-37.25; BOARS 30.25. SLAUGHTER CALVES: GOOD & CHOICE 80.00-110.00.

Belknap Livestock Auction

Dayton, Pa.
Wed., June 1, 1988

CATTLE 55...PDA...Compared with last Wednesday's market: Choice slaughter steer, one 70.50, one Select 65.25, few Utility 53.75-56.25. One Choice sl. heifer 62.00, one Select 61.00, few Standard 57.25-58.75. Few Breaking Utility and Commercial sl. cows 51.75-54, few Cutter and Boning Utility 45.75-49.75, Canner and Low Cutter 39-46.50. Couple Yield Grade No. 1, 1095/1855 lbs. sl. bulls 57 00&61.75. Feeder Cattle: few Medium Frame No. 1, 745/810 lbs. heifers 56.75-60, few Large #2, 190/340 lbs. holsteins 99.00-100.00.
CALVES 89...Couple Choice vealers 113.00&116.00, couple Good 101.00&107, Standard and Good 90/125 lbs. 100.00-120.00, 65/85 lbs. 95.00-114, few Utility 45/55 lbs. 80 00-86.00. Farm Calves: Holstein Bulls 85/130 lbs. 120.00-198 00. Beef cross bulls & heifers 50/115 lbs. 109.00-172.50.
HOGS 187...Barrows and gilts weak to 25 lower. US No. 1-2 230/245 lbs. 50 80-51 25, 1-3 215/250 lbs. 49.90-51, 2-3 215/265 lbs. 48 00-49 75, lot 270 lbs. 45 00. Few US No 1-3 270/645 lbs. sows 36 00-39.25, one 2-3 400 lbs 33.25. Boars 23.005-31.00.
FEEDER PIGS 56. US No 1-3 15/25 lbs. feeder pigs 19.00-30.00, 35/50 lbs. 36.00-46.00, lot Utility 15 lbs 15 00 --- all per head.
SHEEP 12. Few Choice & Prime 85/95 lbs. spring sl. lambs 69 00-71 50. Couple Slaughter ewes 26 00.
GOATS 21...Few Large 40 00-51.00, Medium 25.00-36 00, Kids 19 00-26 00 --- all per head.

Wanted:

Donations of farm animals for new demonstration farm. All types, breeds considered. Must be in good health & have good temperament. Contact Chester County Parks & Recreation Department 215-431-6415

KING'S AUCTION KIRKWOOD
Hay, Straw and Grain Auction EVERY TUESDAY 12:00

Located Rt. 472 5 miles south of Quarryville or 6 miles north of Oxford corner of Rt. 472 and Noble Road at Rouse Tobacco Station.
Lloyd H. Kreider, Auctioneer AU-000513L
No out of state checks ALL TRUCKERS AND FARMERS WELCOME

FEED INGREDIENTS

We Want To Help You Reduce Your Feed Costs

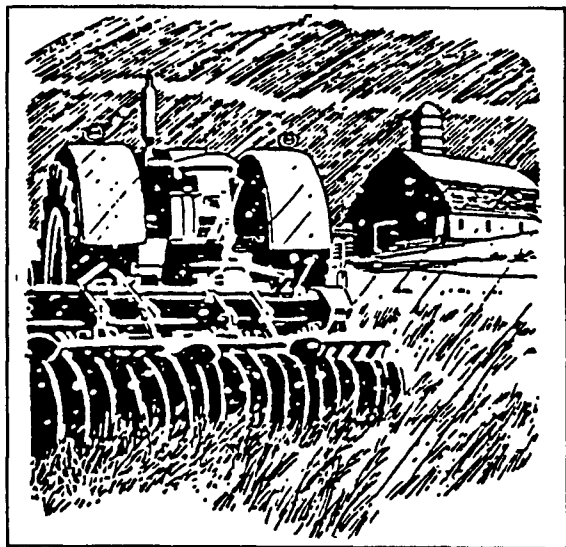
- WE SUPPLY**
- 48% SOYBEAN MEAL
 - ROASTED SOYBEANS
 - DRIED CORN DISTILLERS
 - MIXES

Call Us Today...

HERSHEY SERVICES
Swine Production
(717) 653 8783 R.D. #1 Box 139
1 800 544 4574 Marietta PA 17547

FARMERS

Are you growing TOBACCO, TOMATOES, MELONS, VEGETABLES AND OTHER CROPS?



HAIL STORMS CAN WIPE OUT A SUMMER'S YIELD!

Protect Yourself With Hail Insurance

Our coverage can start immediately and will pay for damage AT THE TIME OF LOSS. We have the markets and knowledge to handle all your farm insurance needs.
For courteous service from people familiar with farming call Roger Slusher at:

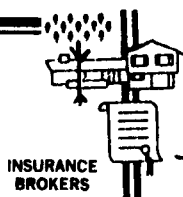
JACOB H. RUHL, INC.

26-28 Market Square; Manheim, PA 17545
Phone: 717-665-2283

800-537-6880

Home: 717-653-1147

Full Service Farm Insurers



KEYSTONE MILLS



FLY CONTROL SPECIALS

Aerosol Bombs: (6+ cans) \$5.80 ea.
(12+ cans) \$5.67 ea.

Dairy Spray Special: 1 Gal. \$9.95
4x1 Gal. \$9.35 ea.
5 Gal. \$37.55
30 Gal. \$175.82

Insecticide Mist: 1 Gal. \$13.17
4x1 Gal. \$12.67 ea.
30 Gal. \$260.37

Dust Bag, 15# Dust Refill \$31.65
Dust Refills 2-15# Bags \$25.39

* Offer Expires 6-30-88, Cash Prices.

FOR MORE INFORMATION



R.D. 3
Ephrata, PA 17522
(717) 354-4616

1975 Route 336
Romulus, NY 14541
(315) 549-2578

Quality Products - Quality Service

* Trademark Ralston Purina Company

