

**National Grain Market**

St. Joseph, Mo.  
Wed., May 25, 1988

CLOSED MODERATELY TO SHARPLY LOWER PRESSURE BY LIGHT EXPORT DEMAND AND INCREASED COUNTRY MOVEMENT. ALSO, LATE FUTURES SELL OFF AFTER WHEAT AND SOYBEANS SET NEW OR NEAR CONTRACT HIGHS, PRESSURED MARKETS LOWER. CORN LOSSES LIMITED BY MEXICO'S TENDER OF 199,000 TONNES OF CORN AND EGYPT'S UPCOMING TENDER FOR 250,000 TONNES OF OPTIONAL-ORIGIN CORN.

EXPORT NEWS: THE JAPANESE FOOD AGENCY BOUGHT 53,000 TONNES U.S. WHEAT; 38,000 WESTERN WHITE AND 15,000 TONNES HARD RED SPRING WHEAT. ZAMBIA BOUGHT 26,500 TONNES OF NO. 2 HARD RED WINTER WHEAT, 12 PCT. PROTEIN, UNDER PL480. INDIA'S STATE TRADING CORP. OVERNIGHT BOUGHT 20,000 TONNES OF OPTIONAL-ORIGIN SOYBEAN FOR MAY/JUNE SHIPMENT.

DATE CHANGE YEAR AGO 05/25/88 05/24/88 05/27/87 WHEAT: KANSAS CITY 3.33-3.36 DN 3 2.82-2.87 MINNEAPOLIS 3.53 DN 6 3/4 3.25 PORTLAND 3.45-3.47 UP 2-1 3.09-3.12 ST LOUIS 3.27-3.29 DN 7-8 2.87-2.97.

CORN, U.S. NO. 2 YELLOW: KANSAS CITY 2.07-2.11 DN 4 1.86-1.91 MINNEAPOLIS 1.98 3/4 DN 5 1/2 1.80 3/4 SO. IOWA 2.04-2.09 DN 4-3 1/2 1.89-1.90 OMAHA 1.96-1.98 DN 3-4 1.78-1.79.

SOYBEANS, NO. 1 YELLOW: KANSAS CITY 7.29-7.38 DN 24 5.43-5.49 MINNEAPOLIS 7.28 DN 26 1/2 5.45 1/2 SO. IOWA 7.30-7.36 1/2 DN 22 5.52-5.54 C. ILL. PROCESSORS 7.39-7.51 DN 24 1/2 5.54 1/2-5.60 1/2.

\*KANSAS CITY, US NO. 1 HARD RED WINTER WHEAT, ORDINARY PROTEIN. MINNEAPOLIS, US NO. 1 DARK NORTHERN SPRING WHEAT,

14% PROTEIN. PORTLAND, NO. 2 SOFT WHITE WHEAT, ST. LOUIS, NO. 2 SOFT RED WINTER WHEAT.

FUTURES CLOSE: KANSAS CITY (JUL) WHEAT 3.38 1/4 DN 4 2.82 1/4. MINNEAPOLIS (JUL) WHEAT 3.34 DN 4 3/4 2.81.

CHICAGO (JUL) WHEAT 3.41 1/4 DN 6 1/4 2.88 3/4. (JUL) CORN 2.14 3/4 DN 4 1/2 4 1/2 5.54 1/2.

EXPORT: BARGE OR RAIL, PORT OF NEW ORLEANS OR NORTH TEXAS GULF. NO.1 HARD RED WINTER WHEAT ORDINARY PROTEIN 3.68 DN 4 3.17 1/4-3.20 1/4 NO 2 SOFT RED WINTER WHEAT 3.53-3.59 DN 6-7 3.11-3.14 NO.2 YELLOW CORN 2.28-2.29 DN 5 2.08-2.09 NO.2 YELLOW SORGHUM RAIL 3.80 DN 6 BARGE 3.82 DN 7 3.52-3.55 NO.2 YELLOW SOYBEANS 7.53-7.59 DN 29 5.76-5.78 1/2.

**King's Hay**

Kirkwood, Pa.  
Tuesday, May 17, 1988

Report Supplied by Auction  
TOTAL LOADS: 55.  
ALFALFA: 58.00-113.00.  
ALFALFA MIX: 62.00-117.00.  
MIXED HAY: 50.00-94.00.  
TIMOTHY & TIMOTHY MIX: 40.00-122.00.  
ORCHARD GRASS AND GRASS HAY: 49.00-109.00.  
EAR CORN: 81.00-84.00.  
STRAW: 18 LBS., 45.00-80.00.

**Belleville Hay**

Wednesday, May 25  
Belleville, PA

Report Supplied by Auction  
TOTAL LOADS: 35 LDS. HAY.  
ALFALFA: 75.00-107.50.  
MIXED HAY: 30.00-60.00.  
EAR CORN: 5 LDS., 77.50-90.00.  
STRAW: 6 AT 52.50-75.00.

**Westminster Hay**

Westminster, Md.  
Tuesday, May 24, 1988

Report Supplied by Auction  
TOTAL LOADS: 32.  
ALFALFA: (FAIR TO GOOD) 74.00-112.00, (ROUGH, MOLDY) 10.00-26.00 BALE.  
ALFALFA & GRASS: 66.00-80.00.  
ALFALFA & STRAW: 2 AT 1.65 AND 1.70 BALE.  
MIXED HAY: (NICE) 49.00-63.00 (ROUGH) 25.00-40.00.  
TIMOTHY HAY: (SOME ROUGH) UP TO 36.00, (NICE) 1.30-1.90 BALE.  
MEADOW GRASS HAY: 45.00.  
STRAW: 50.00-72.50.

**Leinbach's Hay**

Shippensburg, PA  
May 21 & 24

Report supplied by Auction  
TOTAL LOADS: 75.  
ALFALFA: 60.00-155.00.  
MIXED HAY: 37.00-76.00.  
TIMOTHY: 37.50-91.00.  
CLOVER: 48.00.  
MULCH HAY: 30.00-36.00.  
EAR CORN: 78.00-86.00.  
GRASS: 56.00-71.00.  
STRAW: 34.00-71.00.

**Keister's Hay**

Middleburg, PA  
Tuesday, May 24

Report supplied by auction  
TOTAL LOADS: 13 LOADS HAY.  
MIXED HAY: 40.00-97.50.  
OATS: 3 AT 1.85-2.05 BU.  
EAR CORN: 5 AT 70.00-22.50.  
STRAW: 10 AT 47.50-67.50.

**North Jersey Market**

Hackettstown, N.J.  
Tues., May 24, 1988

Hay—Straw & Grain Report  
MIXED NO. 1 2.20 BALE.  
GRASS HAY NO. 5 1.10-2 10.  
STRAW NO. 1 1.35.  
TOTAL: 7.

**New Holland Hay**

New Holland, PA  
Monday, May 23

Report Supplied by Auction  
TOTAL LOADS: 211.  
ALFALFA: 60.00-132.00; 1 AT 142.00, 1 AT 180.00 AND 190.00.  
MIXED HAY: 52.00-110.00, 1 AT 112.00 AND 1 AT 122.00.  
TIMOTHY: 54.00-82.00.  
CLOVER: 29.00-55.00.  
OATS: 2.15-2.35 BU.  
EAR CORN: 60.00-82.00.  
GRASS: 39.00-60.00.  
STRAW: 60.00-80.00.

**Dewart Hay**

Dewart, PA.

Monday, May 23, 1988

Report Supplied by Auction  
TOTAL LOADS: 15, 45.00-135.00.  
STRAW: 3 AT 69.00-71.00.  
WOOD: 1 AT 36.00.

**New Wilmington Hay**

New Wilmington, PA.  
Friday, May 20, 1988

Report Supplied by Auction  
TOTAL LOADS: 38.  
ALFALFA: 100.00-145.00, COUPLE AT 71.00 & 85.00.  
MIXED HAY: MOSTLY 44.00-67.50, FEW 75.00-110.00.  
TIMOTHY: 45.00-60.00, 1 AT 85.00.  
CLOVER: 1 AT 66.00.  
OATS: 2 AT 2.05 & 2.10 BU.  
SHELLED CORN: 1 AT 67.00.  
EAR CORN: 10 AT 60.00-65.00.  
STRAW: 6 LDS., 59.00-67.50.

**Grantsville Livestock**

Grantsville, Maryland  
Saturday, May 21, 1988

HOGS: TOP BARROWS & GILTS 50.50-52.10; HEAVY BUTCHER 48.00-51.50; LIGHT BUTCHER 45.00-49.00; BUTCHER SOWS 32.00-38.00; FEEDER SHOATS 20.00-61.50.

VEAL: GOOD 1.05-1.28; STANDARD 90.00-100.00; UTILITY 65.00-85.00; BULL CALVES 1.30-1.94.

SHEEP & LAMBS: GOOD 80.00-82.00; UTILITY 70.00-75.00; SLAUGHTER EWES 18.00-30.00.

SLAUGHTER CATTLE: STEERS: GOOD 72.00-74.00; STANDARD 65.00-68.00; UTILITY 55.00-62.00.

HEIFERS: GOOD 70.00-74.50; STANDARD 62.00-67.00; UTILITY 52.00-60.00.


COWS: COMMERCIAL 50.50-55.00; UTILITY 48.00-49.00; CANNER & CUTTER 40.00-45.00.

BULLS: COMMERCIAL & GOOD 64.00-69.00; CUTTER & UTILITY 52.00-60.00.

STOCK-FEEDER CATTLE: GOOD 70.00-87.50; MEDIUM 60.00-65.00.

STEER CALVES: GOOD 85.00-92.00; MEDIUM 65.00-75.00.

HEIFER CALVES: GOOD 75.00-97.00; MEDIUM 60.00-70.00.



**READ LANCASTER FARMING FOR COMPLETE AND UP-TO-DATE MARKET REPORTS**

**CRIPPLED AND DISABLED**

**Cows, Steers & Bulls For Slaughter Under USDA Inspection**

Call Wayne Taylor

**717-866-6289  
215-286-9400**

**Lebanon, Berks, Lancaster & Chester Counties**

**Green Dragon Livestock Sales**



Location: Ephrata RD 4. 1 mile N. on North State St., Ephrata.

**COWS COWS COWS SALE EVERY FRIDAY**

Lots of good Northern Feeder & Stockers. Slaughter Cows - Bull Steer, Veal-lamb.

11:00 A.M.-Beef Sale 200-300 each week.  
1:00 P.M.-Dairy Sale.  
7:00 P.M.-Small Animal Sale.

For Special Sales and Herd Dispersals on farm or at our barn or other market information call: Office 717-733-2444, Home 717-838-4318.

**WALTER H. RISSER, Proprietor**

All out of state and new buyers must have cash or certified check or current letter of credit from bank.



**ATTENTION FARMERS**

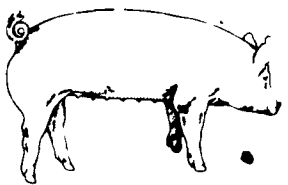
**EVERY MONDAY HATFIELD PACKING CO. and MOYER PACKING CO.**

Will Receive Your Hogs and Cattle at the **DANVILLE LIVESTOCK MARKET** RD 4, Danville, PA

- We will receive your hogs from 8 AM to 12 Noon every Monday. Your hogs will be weighed and paid for immediately.
- We will also accept your sows & boars.
- Your cattle will be received from 12:30 to 5 P.M. We will either pay you for your cattle immediately or you may sell them dressed weight.
- There will not be a commission or yardage fee deducted from your check.
- You may call our office Monday morning and we will be able to tell you the base price for hogs for the day.

MELVIN M. LEHMAN - Owner  
Danville Buying Station

Phone: 717-275-2880



**EMERY'S BUYING STATION**

**OPEN TO RECEIVE YOUR MARKET HOGS**

**AT THE GREEN DRAGON MARKET RD 4, EPHRATA, PA 17522 1 MILE NORTH OF EPHRATA ON NORTH STATE STREET.**

HOURS: MONDAY, TUESDAY, and WEDNESDAY 7:00 A.M. to 11:30 A.M.  
215-458-5677 Residence  
717-733-9648 Office

215-458-5677 Residence  
717-733-9648 Office

**YOU ARE PAID FOR YOUR HOGS IMMEDIATELY**

Ken & Lois Emery, Proprietors

**KING'S AUCTION KIRKWOOD**  
Hay, Straw and Grain Auction  
**EVERY TUESDAY 12:00**  
Located Rt. 472 5 miles south of Quarryville or 6 miles north of Oxford corner of Rt. 472 and Noble Road at Rouse Tobacco Station.  
Lloyd H. Kreider, Auctioneer AU-000513L  
No out of state checks  
**ALL TRUCKERS AND FARMERS WELCOME**

**Discontinuing HAY & STRAW AUCTION**  
Until November  
**VINTAGE SALES STABLES, INC.**  
10 miles East of Lancaster on Rt. 30, Paradise, PA  
**717-442-4181 or 768-8204**  
L. Robert Frame, Mgr.

**HAY & STRAW SALE**  
12 Noon Every Wednesday  
**CHANGE OF LOCATION STARTING MAY 25**  
Located Gum Tree area. Going south on 41, at Cochranville turn left, one block turn right, go about 5 mi. on the right hand side. Watch for sale signs.  
Harvey Z. Martin  
215-383-6686 (Office)  
215-445-5303 (Residence)



**Be Wise . . . Check our prices before you buy!!**

**SPRAY MATERIALS**

- \* ATRAZINE
- \* DUAL
- \* LASSO
- \* SUTAZINE
- \* ROUND UP
- \* LASSO-ATRAZINE
- \* BLADEx
- \* BANVEL
- \* LOROx
- \* PARAQUAT
- \* PRINCEP
- \* EXTRAZINE
- \* FURADAN
- \* COUNTER
- \* LORSBAN
- \* DYFONATE ETC.

**SAVE ON BULK HERBICIDES**

- BICEP • LASSO-ATRAZINE • PROWL
- EXTRAZINE • DUAL • BLADEx • LASSO MT

**MELVIN R. WEAVER**

2213 Leabrook Road, Lancaster, PA 17601  
Ph: 717-569-6576 or 898-8354