

**Valley Livestock**

Athens, Pa.  
 Monday, May 23, 1988  
 Report supplied by auction  
 HOLSTEIN HFR. CALVES TO 157.50  
 VEAL CALVES TO 111.00.  
 VEALER BULL CALVES TO 220.00.  
 SLAUGHTER CALVES 95.00-115.00  
 GRASSERS & FEEDERS 50 00-65 00  
 LAMBS 70.00-127.50.  
 SHEEP 20.00-26.00.  
 HOGS, 200 TO 250 LBS. 44.00-50.00.  
 SOWS 32.00-35.50.  
 BOARS TO 29.00.  
 PIGS EA. 30.00-45.00.  
 HEIFERS 52.00-58.00.  
 STEERS 51.00-57.00.  
 STEERS, FEEDER 60.00-75.00.  
 BULLS 52.00-65.00.  
 COWS, GOOD 48.00-55.75.  
 COWS, MEDIUM 45.00-48.00.  
 COWS, POOR OR SMALL

40 00-46.00  
 CATTLE MARKET STEADY  
 CALF MARKET STEADY  
 HORSES EA TO 600 00.  
 GOATS TO 31 00.  
 REMARKS - SALE NEXT MON, MAY 30

**Dewart Livestock Auction**

Dewart, Pa.  
 Mon., May 23, 1988  
 CATTLE 134...PDA...Compared with last Monday's market: Slaughter cows about steady. Few Choice 1000/1425 lbs. sl. steers 71.35-75.75, few Select 63.75-68.00. Few Choice sl. heifers 70.10-71.85, few Select 61.25-68.75. Breaking Utility & Commercial sl. cows 49.00-54, Cutter & Bon. Utility 50.00-54, Canner & Low Cutter 47.00-51, Shells down to 44.00. Few Yield Grade No 1, 1280/1420 lbs. sl. bulls 62.25-63.50. CALVES 228 ..Couple Choice vealers

120.00&125.00, Standard and Good 75/95 lbs. 110 00-121.00, Utility 60/85 lbs 100.00-111.00. Farm Calves: Holstein Bulls 85/130 lbs 120 00-200, mostly 155 00-185.00; Hol Heifers 90/120 lbs 120 00-155.00  
 HOGS 29.. Few US No 1-3 215/255 lbs. barrows and gilts 52.50-54.00. US No 1-3 350/660 lbs. sows 34 00-36.00. Few Boars 30 00-32.25.  
 FEEDER PIGS 133...US No. 1-3 25/40 lbs. feeder pigs 30.00-36.00, 60/80 lbs. 44.00-50.00 --- all per head.  
 SHEEP 1...No Market Test.  
 GOATS 0...No Market Test.

45.75-48, Canner and Low Cutter 38 00-45, Shells down to 30.00. Yield Grade No. 2, sl. bulls 55.75-60.75 Feeder Cattle: Holstein steers 68 50-78.50 Bulls 184.00  
 CALVES 120...Vealers 95 00-122.00 Farm Calves: Holstein Bulls 120.00-184.00.  
 HOGS 110...US No.1-2 215/240 lbs. barrows and gilts 51.50-52.75, 1-3 200/270 lbs. 49.00-50.50. US No. 1-3 sows 28 00-39.50. Boars 23.50-31.50.  
 FEEDER PIGS 217...US No. 1-3 25/35 lbs. feeder pigs 25.50-34.00, 35/60 lbs. 35.50-54.00 --- all per head.  
 SHEEP 15...Good spring slaughter lambs 66.00-73.00. Slaughter ewes 19.00-48.00.  
 GOATS 8...15.00-59.00 --- all per head.  
 HOLSTEIN DAIRY COWS \$550.00-\$2250.00 --- PER HEAD.

VEAL CARCASS HIDE-ON CHOICE & PRIME SPECIAL FED 250 HEAD  
 220-280 LBS. 215.00-225.00, 5 00-7 00 HIGHER.  
 GOOD AND CHOICE BONING TYPE - HIDE ON NORTHEASTERN SUPPLIERS 150 HEAD  
 65-75 LBS. 141.00-144.00, 3.00-6 00 HIGHER.  
 55-64 LBS. 137.00-140.00.  
 45-54 LBS. 133.00-136.00.  
 35-44 LBS. 129.00-132.00.  
 34 LBS. DWN 127.00-130.00.  
 INSHIPPED HEAD. NO SALES REPORTED.

**New Holland Horses**

New Holland Sales Stables  
 New Holland, PA  
 Monday, May 23, 1988  
 Report supplied by Auction  
 REGISTERED RECEIPTS OF 290 HEAD OF HORSES, MULES AND PONIES. MARKET: LOWER.  
 LOCAL  
 DRIVING HORSES: 400.00-1050.00  
 RIDING HORSES: 300.00-660.00.  
 LIGHTWEIGHT KILLERS 225.00-400.00.  
 HEAVYWEIGHT KILLERS 450.00-650.00.  
 MARE PONIES: 35.00-70.00  
 COLTS: 15.00-30.00.  
 GELDING PONIES: 35 00-70 00  
 LARGER PONIES: 125 00-200 00

**Belleville Livestock Auction**

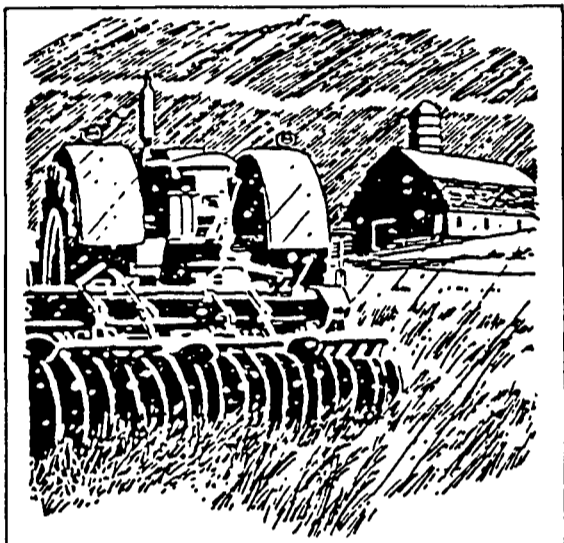
Belleville, Pa.  
 Wed., May 25, 1988  
 CATTLE 80...REPORT SUPPLIED BY THE AUCTION ...Couple Standard slaughter steers 54.50 and 66.50. Breaking Utility and Commercial slaughter cows 48.35-51.00, Cutter and Boning Utility

**East Coast Carlot**

Wed., May 25, 1988  
 Report supplied by USDA  
 EAST COAST CARLOT MEAT TRADE DELIVERED PRICES (CAF) BOSTON TO WASHINGTON AREA INCLUSIVE.  
 COMPARED TO TUESDAY'S CLOSE: CHOICE AND PRIME SPECIAL FED VEAL 5 00 TO 7 00 HIGHER. GOOD AND CHOICE BONING VEAL 3.00 TO 6.00 HIGHER; INSHIPPED UNTESTED. CHOICE AND PRIME LAMB NOT ESTABLISHED  
 STEADY TO WEAK UNDERTONE

**FARMERS**

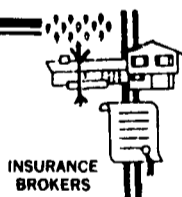
Are you growing TOBACCO, TOMATOES, MELONS, VEGETABLES AND OTHER CROPS?



**HAIL STORMS CAN WIPE OUT A SUMMER'S YIELD!**

**Protect Yourself With Hail Insurance**

Our coverage can start immediately and will pay for damage AT THE TIME OF LOSS. We have the markets and knowledge to handle all your farm insurance needs. For courteous service from people familiar with farming call Roger Slusher at:



**JACOB H. RUHL, INC.**

26-28 Market Square, Manheim, PA 17545  
 Phone: 717-665-2283  
 800-537-6880  
 Home: 717-653-1147  
 Full Service Farm Insurers

C.B. HOOBER & SON, INC.  
 Intercourse, PA  
 (717) 768-8231

HOOBER EQUIPMENT, INC.  
 Middletown, DE  
 (302) 378-9555

TWO LOCATIONS  
*The Saving Place*

**WE SHIP PARTS DAILY**

Via UPS - PPSH - BUS - AIR FREIGHT, ETC.



**HOURS**  
 Mon -Fri 7 AM-5 PM; Sat 7 AM-Noon



**CALL US...**  
*It Could Be We Have It*

Authorized  
 UPS Station



**TARTER GATE SPECIAL**

NOW THROUGH JUNE 11, 1988

\$5.00 OFF REGULAR PRICE

**12' Economy Round Tube 6 Bar Gate**

Reg. Price \$38.50

Sale Price

**\$33.50**

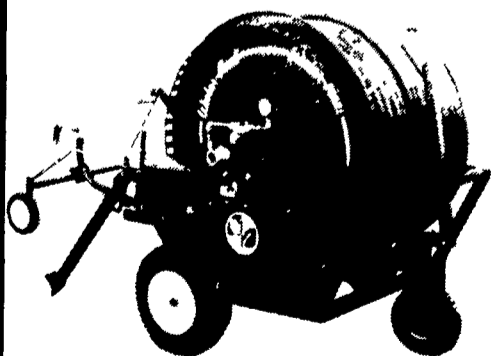
At  
**KEY-AID DISTRIBUTORS**  
 225 WOOD CORNER RD  
 LITITZ, PA 17543  
 PH. 717-738-4241

TOLL FREE IN PA (1-800-253-9243)  
 OUTSIDE PA (1-800-453-9243)

Just West Of Ephrata, South off Rt 322

**KIFCO Water-Reels**

FIVE MODELS FROM \$1,795 - \$8,895 fob



Cost Efficient \* LARGER SIZE UNITS AVAILABLE  
**IRRIGATION**

one man operation up to 5.5 acre in./day  
 .3-3 acres/set auto shutdown  
 220'-660' hose American made

**hummer** Hummer Turfgrass Inc RD 7 Box 419  
 Me. em PA 17545 Lancaster County

Or Call TOLL FREE 1-800-USA TURF,  
 In PA call 1-800-732-3504