



# Livestock market and auction news

## Virginia Weekly

Richmond, Va.

Thurs., May 12, 1988

MARKETS IN REVIEW; MAY 5-11, 1988.

FEEDER STEERS AND HEIFERS IN VIRGINIA THIS WEEK WERE MOSTLY STEADY AS MIDWEST PRICES WERE \$2.00-4.00 LOWER.

SLAUGHTER STEERS AND HEIFERS IN VIRGINIA WERE \$1.50-3.00 HIGHER AS MIDWEST PRICES WERE \$1.00 LOWER. THE BOXED BEEF CUT-OUT VALUE ON TUESDAY WAS \$114.04 DOWN \$2.39 FROM LAST WEEK.

COWS AND BULLS AT VIRGINIA AUCTIONS WERE MIXED \$1.00 HIGHER TO \$2.00 LOWER WHILE MIDWEST PRICES WERE STEADY TO \$2.00 LOWER. BEEF PRODUCTION LAST WEEK WAS DOWN 2 PERCENT FROM A WEEK AGO BUT 9 PERCENT ABOVE A YEAR AGO. AVERAGE DRESSED WEIGHTS WERE 17 POUNDS HEAVIER THAN LAST YEAR.

VEAL AND CALF PRICES IN VIRGINIA LAST WEEK WERE \$4.00-14.00 HIGHER WHILE MIDWEST PRICES WERE ERRATIC, MOSTLY \$7.00-10.00 LOWER. VEAL AND CALF SLAUGHTER LAST WEEK WAS 5 PERCENT ABOVE THE PREVIOUS WEEK AND 6 PERCENT ABOVE A YEAR AGO. AVERAGE DRESSED WEIGHTS WERE 7 POUNDS LIGHTER THAN LAST YEAR.

LAMBS PRICES IN VIRGINIA WERE 75 CENT TO \$2.00 LOWER WHILE MIDWEST PRICES WERE MIXED, \$2.00 HIGHER TO \$2.00 LOWER. LAMB SLAUGHTER WAS 5 PERCENT ABOVE THE PREVIOUS WEEK AND 11 PERCENT ABOVE A YEAR AGO. AVERAGE DRESSED WEIGHTS WERE 5 POUNDS HEAVIER THAN LAST YEAR.

MARKET HOG PRICES THIS WEEK

IN VIRGINIA WERE 25 CENT TO \$2.50 HIGHER THIS WEEK AS MIDWEST PRICES WERE \$1.25 HIGHER. FRESH PORK PRICES WERE STEADY TO \$10.00 HIGHER EXCEPT FOR HAMS WHICH WERE \$3.00 LOWER. PORK PRODUCTION WAS 3 PERCENT BELOW LAST WEEK BUT 12 PERCENT ABOVE LAST YEAR. AVERAGE DRESSED WEIGHTS WERE 2 POUNDS HEAVIER THAN LAST YEAR.

THE RICHMOND HOG MARKET CLOSED STEADY THAN LAST WEDNESDAY WITH BARROWS AND GILTS US 1-4 200-240 LBS AT \$40.50-41.50 PER CWT.

THE SOUTHEAST VIRGINIA HOG MARKET CLOSED \$1.00-1.50 HIGHER THAN LAST WEDNESDAY WITH BARROWS AND GILTS US 1-4 200-240 LBS AT \$43.00-44.00 PER CWT.

AT HARRISONBURG, LYNCHBURG AND TAPPAHANNOCK HOG PRICES WERE \$1.00-1.50 HIGHER WITH LAST WEDNESDAY AT \$40.00-44.50. SOWS RANGED \$30.00-32.00 AND BOARS \$22.00 PER CWT.

SLAUGHTER STEERS AND HEIFERS 1% SLAUGHTER COWS 18%, SLAUGHTER BULLS 2%, SLAUGHTER CALVES AND VEALERS 1%, FEEDER CATTLE UNDER 600 LBS 64%, OVER 600 LBS 14%.

PRICE RANGES FOR VIRGINIA AUCTIONS

SLAUGHTER CATTLE STEERS; CHOICE 2-3 1000-1150 LBS 66.50-75.00 CHOICE 2-3 1150-1300 LBS 73.50 HEIFERS; CHOICE 2-3 950-1100 LBS 64.50-71.35 CHOICE 2-3 1100 LBS & OVER 65.00-72.25 UTILITY & COMMERCIAL COWS 45.00-56.75 BULLS; 1-2 900-1300 LBS 53.25-63.75 1-2 1300-1600 LBS 54.00-68.50 1-2 1600 LBS & OVER 54.75-68.00 SLAUGHTER CALVES AND VEALERS VEALERS - HIGH CHOICE AND PRIME 100-250 LBS 92.00-115.00 FEW 122.00 GOOD AND CHOICE 100-250 LBS 91.00-99.00 CALVES - GOOD AND CHOICE 250-500 LBS 80.00-89.00 FEW 65.00

SLAUGHTER LAMBS HIGH CHOICE & PRIME 95-125 LBS SPRING 81.25-84.75; SHORN 76.00-77.00 HIGH CHOICE & PRIME 95-125 LBS WOOL 72.00-75.00 SLAUGHTER HOGS US 2-4 200-250 LBS 41.50-45.75 SOWS US 1-3 300-500 LBS 30.00-36.00; 500 LBS & OVER 32.00-37.75 FEEDER CATTLE STEERS; MEDIUM 1 300-500 LBS 95.00-107.00 FEW 114.00 500-700 LBS 86.00-100.00 HEIFERS; MEDIUM 1 300-500 LBS 80.00-96.00 FEW 71.50 500-700 LBS 72.00-83.00.

## Northern Virginia Area Livestock

Tues., May 10, 1988

ALL TRENDS COMPARED TO LAST TUESDAY.

SLAUGHTER HOGS 10 HEAD - BARROWS AND GILTS 75 CENT HIGHER. SLAUGHTER SOWS STEADY. BARROWS AND GILTS US 2-4 200-250 LBS 44.25 3-4 250-300 LBS 39.00 SOWS US 1-3 500 LBS & OVER 35.50-37.75.

SLAUGHTER CATTLE 122 HEAD - SLAUGHTER COWS 1.00 LOWER. SLAUGHTER BULLS STEADY.

SLAUGHTER COWS 99 HEAD CUTTER & BNG.UT 1-3 43.00-49.75 BRKG.UT. & COMM. 2-4 47.00-53.00 CANNER & LOW CUTTER 1-2 42.00-46.00.

SLAUGHTER BULLS 12 HEAD; 1-2 900-1300 LBS 55.00-63.50 1-2 1300-1600 LBS 55.00-65.00 1-2 1600 LBS & OVER 65.00-68.00.

SLAUGHTER CALVES AND VEALERS 11 HEAD VEALERS - HIGH CHOICE AND PRIME 100-250 LBS 90.00-122.00.

LAMBS 195 HEAD - SLAUGHTER LAMBS 1.00 LOWER. HIGH CHOICE AND PRIME 95-125 LBS SPRING 84.00; SHORN 76.00 CHOICE 85-125 LBS SPRING 79.75; SHORN 77.50 GOOD AND LOW CHOICE 75-90 LBS SHORN 72.50 SLAUGHTER EWES ALL GRADES 21.00-26.00 SLAUGHTER RAMS ALL GRADES 22.00-26.00.

FEEDER CATTLE 215 HEAD - NO TRENDS REPORTED. STEERS; MEDIUM 1 200-300 98.00-109.00 300-400 93.00-105.00 400-500 93.00-100.00 HOLSTEIN STEERS; MED.&LARGE 1-2 300-500 LBS 86.00; 500-700 LBS 73.00-75.75 700-900 LBS 66.50.

HEIFERS; MEDIUM 1 300-400 80.00-87.00 400-500 74.00-80.00 500-600 73.00-77.00 FEEDER BULLS; MEDIUM 1 300-500 LBS 95.00-111.00 500-700 LBS 75.00-81.00 BABY CALVES RETURNED TO FARMS 29 HEAD NEWBORN TO 4 WK OLD 50.00-168.00 PER HEAD. OVER 100 LBS 139.00-158.00 PER CWT.

STATE GRADED FEEDER CATTLE 454 HEAD SOLD AT MARSHALL.

STEERS; MED. & LARGE 1 MED.&LARGE 2 300-400 105.50 --- 400-500 97.50-100.00 100.00-101.00 500-600 95.50-100.00 83.50-86.00 600-700 85.50-95.00 81.50 700-800 80.00-86.00 --- 800-900 74.75-77.00 70.50.

HEIFERS; MED. & LARGE 1 MED.&LARGE 2 300-400 94.00-97.00 --- 400-500 86.00-88.75 82.75 500-600 79.50-81.25 75.00-77.50 600-700 74.00-75.00 75.00 700-800 71.00-73.75 --- 800-900 68.25-68.75 68.00 900-1000 68.50.

## Southeast & Central Virginia Area

Lynchburg, Va.

Mon., May 9, 1988

ALL TRENDS COMPARED TO LAST MONDAY.

SLAUGHTER CATTLE 56 HEAD - SLAUGHTER COWS STEADY TO 1.00 HIGHER. SLAUGHTER BULLS MOSTLY STEADY.

SLAUGHTER COWS 52 HEAD CUTTER & BNG.UT. 1-3 46.75-51.50 BRKG.UT. & COMM. 2-4 47.75-54.25 CANNER & LOW CUTTER 1-2 42.00-44.50.

SLAUGHTER BULLS 4 HEAD; 1-2 900-1300 LBS 55.00-57.50 1-2 1300-1600 LBS 61.00-63.25.

FEEDER CATTLE 214 HEAD - FEEDER STEERS TOO FEW FOR A TREND. FEEDER HEIFERS STEADY TO 3.00 LOWER. STEERS; MEDIUM 1 SMALL 1 MED.&LARGE 2 300-400 ---

92.00-105.00 89.00-108.50 400-500 92.00-103.00 83.00 --- HOLSTEIN STEERS; MED.&LARGE 1-2 300-500 LBS 85.00-89.50; 500-700 LBS 77.50-82.00 700-900 LBS 64.50; 1100 LBS & OVER 59.90.

HEIFERS; MEDIUM 1 SMALL 1 MED.&LARGE 2 300-400 --- --- 83.50 400-500 --- --- 75.00-79.00 500-600 78.50-79.00 72.50 74.50 600-700 73.50-75.00 --- --- FEEDER BULLS; MEDIUM 1 SMALL 1 MED.&LARGE 2 300-500 LBS 91.00-115.00 81.00-93.00 82.00-93.00 500-700 LBS 72.00-85.00 --- --- COWS WITH CALVES AT SIDE 12 PAIR; M&L-1, 3-7 YR OLD 950-1125 LBS WITH CALVES 200-225 LBS 600.00-760.00; M-2, 3-7 YR OLD 725-875 LBS WITH CALVES 150-200 LBS 560.00 PER PAIR. BABY CALVES RETURNED TO FARMS 20 HEAD NEWBORN TO 4 WK OLD 82.50-142.50 PER HEAD. OVER 100 LBS 80.00-151.00 PER CWT.

STATE GRADED FEEDER CATTLE 100 HEAD SOLD AT LYNCHBURG STEERS; MED. & LARGE 1 MED.&LARGE 2 300-400 102.00-103.00 --- 400-500 102.00-103.00 FEW 88.50 97.50-99.00 500-600 96.00-98.50 97.50 600-700 85.00-87.00 90.00.

HEIFERS; MED.&LARGE 1 SMALL 1 MED.&LARGE 2 300-400 80.00-86.50 --- 80.50-86.50 400-500 78.00-85.50 79.75 80.00-86.00 500-600 75.50 --- 77.00 600-700 74.00.

## North Jersey Livestock

Hackettstown, NJ

Tues., May 10, 1988

Report supplied by auction

CALVES .39-2.00.  
COWS .41-.59% .  
EASY COWS .10-.54% .  
HEIFERS .45-.68 .  
BULLS .54%-.69 .  
STEERS .56-.74% .  
HOGS .24-38% .  
SHEEP .10-.78 .  
LAMBS, EACH 13.00-85.00 .  
LAMBS, PER LB. .37-1.25 .  
GOATS, EACH 31.00-93.00 .  
KIDS, EACH 7.00-48.00 .  
TOTAL 1,404.

## Green Dragon Livestock Sales



Location: Ephrata RD 4, 1 mile N. on North State St., Ephrata.

## COWS COWS COWS SALE EVERY FRIDAY

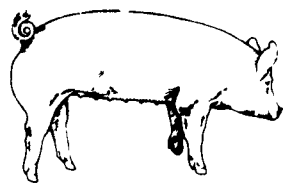
Lots of good Northern Feeder & Stockers. Slaughter Cows - Bull Steer, Veal-lamb.

11:00 A.M.-Beef Sale 200-300 each week.  
1:00 P.M.-Dairy Sale.  
7:00 P.M.-Small Animal Sale.

For Special Sales and Herd Dispersals on farm or at our barn or other market information call: Office 717-733-2444, Home 717-838-4318.

**WALTER H. RISSER, Proprietor**

All out of state and new buyers must have cash or certified check or current letter of credit from bank.



## EMERY'S BUYING STATION

### OPEN TO RECEIVE YOUR MARKET HOGS

AT THE GREEN DRAGON MARKET RD 4, EPHRATA, PA 17522 1 MILE NORTH OF EPHRATA ON NORTH STATE STREET.

HOURS: MONDAY, TUESDAY, and WEDNESDAY 7:00 A.M. to 11:30 A.M.  
215-458-5677 Residence  
717-733-9648 Office

215-458-5677 Residence  
717-733-9648 Office

**YOU ARE PAID FOR YOUR HOGS IMMEDIATELY**

Ken & Lois Emery, Proprietors

## SWINE PRODUCTION SALES AND SERVICE

Feeding Programs And Services To Meet Your Individual Needs



Computerized Record Keeping System

Contracts Available

Supplying Farm Fresh Feeder Pigs

Marketing and Hedging Services

Marketing of Genesis Breeding Stock

Developing Individual Financial Programs

Quality Products And Services - Working For YOU

419 West High Street  
Elizabethtown, PA 17022

Elizabethtown  
(717) 367-1525

PA Toll Free  
1-800-468-5524

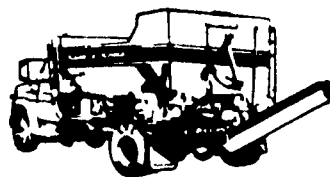
Shippensburg  
(717) 532-7845

## PARADISE CONCRETE

Metered Concrete @ Competitive Prices  
Air Entrained Concrete

For Greater Strength

No Job Too Small! Pay Only What You Use -  
And Do The Job Yourself  
General Contractors Welcome



Perfect For The "Do-It-Yourselfer"

**717-687-0990**

19 Meadow Lane, Paradise, PA

Eric R. Probst, Prop.  
Mitch White, Driver

## OUR BUSINESS IS SERVICE TO FARMERS

Let us help you build a successful marketing program!

Call:

**717-761-2740**  
**800-382-1356**



## Grains & Livestock

• Forward Contracting • Hedging Services

**CFS** PFA COMMODITY FUTURES SERVICE, INC.