

HOG MARKETS

New Holland Feeder Pigs

Lancaster, Pa.
Wed., May 11, 1988

FEEDER PIGS TODAY 959 LAST WEDNESDAY 1032 LAST YEAR 1662. TREND: Compared to last Wednesday US 1-2 30-60 lb feeder pigs firm to 5.00 higher, other weights and grades weak to 5.00 lower. All pigs weighed on arrival and sold by the hundred weight.

GRADE HEAD WEIGHT PRICE US 1-2 123 40-49 114.00-125.00. 136 50-59 109.00-122.00. 69 60-69 95.00-98.00. 6 94 70.00.

US 2 18 26 130.00. 15 36 114.00. 77 40-49 108.00-112.00. 61 41-44 88.00-96.00. 19 58 98.00. 34 50-55 86.00-90.00. 14 63 80.00.

US 2-3 11 27 102.00. 12 37 96.00. 23 42-47 68.00-86.00. 7 61 66.00.

SLAUGHTER 31 17-19 150.00-154.00. 131 24-36 104.00-132.00.

Carlisle State Graded Feeder Pig Sale

Carlisle, Pa.
Fri., May 6, 1988

2044 PIGS, 3 WEEKS AGO 1589 — COMPARED TO THE LAST SALE, PRICES WERE \$5-\$10 LOWER. ALL PIGS WERE WEIGHED ON ARRIVAL AND SOLD BY THE POUND.

US NO. 1 83 HD. 32-37 LBS. 105.00-117.00; 468 HD. 40-48 LBS. 100.00-114.00; 244 HD. 50-51 LBS. 98.00-102.50; 20 HD. 60-68 LBS. 90.00-96.00.

US NO. 1&2'S 128 HD. 25-39 LBS. 89.00-102.00; 100 HD. 40-49 LBS. 90.00-99.00; 310 HD. 51-58 LBS. 90.00-98.00; 310 HD. 51-58 LBS. 90.00-98.00; 183 HD. 60-67 LBS. 80.00-87.00; 60 HD. 61-64 LBS. 72.00-77.00; 21 HD. 72-77 LBS. 79.00-81.00.

US NO. 2: 43 HD. 32-43 LBS. 88.00-97.00.

1&2'S MAINLY 2, 244 HD. 41-47 LBS. 80.00-85.00; 115 HD. 51-59 LBS. 76.00-86.00.

NEXT SALE FRIDAY, MAY 20, 1988.

New Holland Hog Auction

Mon., May 9, 1988

HOG RECEIPTS TODAY 829 LAST MONDAY 879 LAST YEAR 973.

TREND: Compared to last Monday barrows and gilts 2.50 higher.

BARROWS AND GILTS: US 1-2 210-245 lb 46.00-47.50.

US 1 210-245 lb 47.50-49.00.

US 1-3 210-255 lb 45.35-45.75, Few 44.75-45.25.

US 2-3 260-275 lb 39.00-42.25, One lot 290 lb 37.00.

Lancaster Hogs

Lancaster Stockyards
Sat., May 7, 1988

Report supplied by auction

887 HEAD.

US #1, 200-245 LB. 48.00-48.75, 6 LOAD 50.00-50.50.

US #1&2, 200-250 LB. 47.00-47.75.

US #1&3, 200-245 LB. 46.00-46.75.

US #2&4, 200-270 LB. 45.00-45.85.

SOWS 300-500 LB. 31.00-35.25, 500-600 LB. 33.00-33.75.

BOARS UNDER 300 LB. 38.75-40.50, OVER 300 LB. 29.75-30.50.

Peoria Hogs

Peoria, Illinois

Wed., May 11, 1988

HOGS: 2400 TRADING MODERATE. BARROWS AND GILTS 1.00 HIGHER THAN TUESDAY.

US 1-3 220-250 LBS. 46.00-46.50 200-220 LBS. 44.50-46.00 2-3 240-260 LBS. 45.00-46.00 260-280 LBS. 43.00-45.00.

SOWS: UNDER 500 LBS. STEADY TO .50 HIGHER, OVER 500 LBS. 2.50 TO 3.00 LOWER WITH CLEARANCE INCOMPLETE 30%.

US 1-3 350-500 LBS. 36.50-37.50 500-650 LBS. 35.00.

BOARS: OVER 350 LBS. 36.50 UNDER 350 LBS. 35.50-37.00.

HOG 214.

HB 45.00-46.50 HC 46.00-46.50 HD 46.00-46.50 HE 46.00-46.50 HH 44.50-46.50 HI 46.00-46.50 HJ 46.00-46.50 HK 46.00-46.50 HQ 45.00-46.00 HR 43.00-45.00 VV 36.50-37.50 WW 36.50-37.50 XX 35.00-35.00 YY 35.00-35.00 ZZ 36.50-36.50.

GRAIN, CATTLE AND HOG FUTURES MARKETS

(Daily closing bids: Friday, May 6 through Thursday, May 12)

CORN

	FRI.	MON.	TUES.	WED.	THUR.
MAY	201%	200%	199%	197	196
JULY	210%	209%	208%	206	204%
SEPT.	217%	216%	216%	213%	211%
DEC.	226%	226%	225%	222%	221%
MAR. 89	235	234%	234%	231%	230%
MAY	240	239%	239%	236%	236

SOYBEANS

	FRI.	MON.	TUES.	WED.	THUR.
MAY	692%	700	705%	712	707
JUL	702%	710%	717	723%	716%
AUG	707%	714%	721%	729%	722%
SEPT.	709%	718%	725	732%	724%
NOV	718%	726%	733%	741	733%
JAN. 89	726%	735	740%	750%	742%
MAR.	734	742%	749%	756%	750%

CHICAGO CATTLE

	FRI.	MON.	TUES.	WED.	THUR.
JUNE	72.70	72.80	72.80	73.42	73.55
AUG.	68.72	68.62	68.60	68.90	69.92
OCT.	68.25	68.17	68.07	68.15	68.20
DEC.	69.00	68.82	68.95	68.92	69.07
FEB. 89	68.62	68.50	68.80	68.70	68.60
APR.	69.90	69.70	69.80	69.80	69.90

WHEAT

	FRI.	MON.	TUES.	WED.	THUR.
MAY	297%	301%	303%	303	301%
JULY	307%	311	313%	311%	310%
SEPT.	316%	319	321%	320%	318%
DEC.	327%	330%	333%	332%	329%
MAR. 89	333%	337	340	339%	335%

SOYBEAN MEAL

	FRI.	MON.	TUES.	WED.	THUR.
MAY	206.90	208.90	211.40	215.80	213.80
JULY	205.90	207.70	209.90	213.90	211.80
AUG.	205.80	207.70	209.90	213.60	211.50
SEPT.	206.20	208.10	210.40	213.60	211.70
OCT.	206.50	208.50	210.80	213.50	212.10
DEC.	208.80	210.70	212.90	215.60	213.70
JAN. 89	209.00	211.30	213.20	216.00	214.50

CHICAGO HOGS

	FRI.	MON.	TUES.	WED.	THUR.
JUNE	51.65	51.67	51.45	52.77	53.12
JULY	51.17	51.55	51.42	52.80	52.80
AUG.	49.10	49.75	49.62	50.55	50.95
OCT.	44.20	44.62	44.70	45.20	45.60
DEC.	45.05	45.75	45.60	46.20	46.62
FEB. 89	44.90	45.45	45.45	45.90	46.30
APR.	42.75	42.90	43.00	43.32	43.50



FUTURES MARKET TRENDS GRAIN AND LIVESTOCK

This market information provided by ACRES ACRES is a copyrighted market information service developed by the American Farm Bureau and available to Pennsylvania farmers on a daily basis through Pennsylvania Farmers' Association Farm Management Services. For additional market comments and trading service contact PFA Commodity Futures Service (717) 761-2740

Acres Corn Update: Corn futures today closed lower from 2-1/2 to 3 cents with selling late in the session tied to professional fund liquidation. Lower basis levels and increased movement pressured the spot option as CCC second party purchases began to accelerate. Selling early in the session was limited on fears of soil moisture deficiencies.

Acres Soybean Update: Soybean futures closed sharply higher but off session highs as buying throughout the session was in response to yesterday's bullish carryout figures. Buying in soy meal throughout the session was linked to processor shutdowns and ideas more business would be channeled to the U.S. May soybeans closed up 6-1/4 cents at \$7.12 after trading to a high of \$7.16-1/2 earlier in the day. New contract highs were made again today with November posting a high of \$7.45-1/2 and a close of \$7.41, up 7-1/2 cents.

Acres Wheat Update: Wheat futures closed from 1/2 to 1-1/2 cents lower after trading higher throughout the session. Last minute losses were attributed to commissionhouse selling amid concerns over the bearish production figures issued yesterday. Prices were boosted on the open by a short covering rally generated by ideas that new export business was in the works. Support came from spillover strength in the beans and lower than expected ending stocks. July closed down 1-1/2 cents at \$3.11-3/4 after posting a high of \$3.15-1/2 midday.

Acres Cattle Update: Live cattle futures closed mostly higher as June posted a new contract high at \$7.347. After a higher opening, futures turned lower on profit-taking and then later rebounded on buying interest tied to moderate boxed beef movement at higher prices. Opening gains

were limited by steep losses in the neighboring stock index pit. Liquidation was prompted by ideas that the cash market was getting topky.

CME FEEDER CATTLE SETTLEMENT PRICE: 5/09/88- \$80.88 up 14.
ACRES NEXT DAY OUTLOOK: cash - steady futures - steady to mixed.

Acres Hog Update: Live hog futures closed sharply higher in the front months with gains of 132 and 138 points. Buying was tied to strong technical signals and strength in the cash markets, amid light receipts. June closed out the session at \$52.77 after posting a high of \$52.85 earlier in the session. Bellies mirrored activity in the live hogs and posted gains of 35 to 175 points.

ACRES NEXT DAY OUTLOOK: cash - steady futures - steady.

PIGS

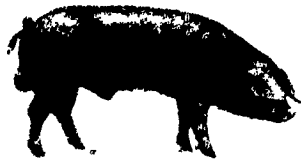
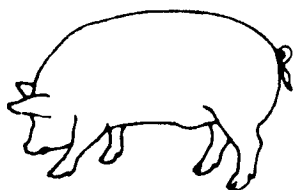
STATE GRADED SALE

FRI., MAY 20
1:30 P.M.

WESTMINSTER LIVESTOCK AUCTION
Westminster, MD

Now holding 2 sales each month on 1st & 3rd Fridays.

Phone (301) 848-9820
or 301-857-1179



Walter M. Dunlap and Sons offers all cattle feeders two marketing days — Give us a call for advice and marketing conditions.

MONDAYS OR WEDNESDAYS

Consign With Us — For the Marketing Edge

We are buying feeder pigs

★ ★ ★ Direct off the farm ★ ★ ★
Give us a call whether you are buying or selling

Graded Feeder Cattle Sale

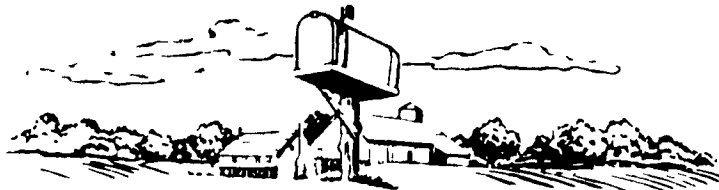
Thurs., May 13 CANCELLED 11:00 A.M.
Rescheduled Fri., May 20 at 11:00 A.M.

Walter M. Dunlap and Sons

Lancaster Stockyards

Tel. (717) 397-5136

An Old Line Commission Firm Keeping Abreast With The Times



In this issue

Four Sections

Departments

Editorial	A10
Farm Calendar.....	A10
Farm Forum	A10
Classified Ads.....	C 6
Business News.....	D 6
Mailbox Markets.....	D24
Sale Reports.....	D31
Public Auction Register.....	D36

Dairy

May Dairy Digest.....	A24
Lancaster DHIA.....	D 9
Mifflin DHIA.....	D13
Crawford DHIA.....	D15

Home and Youth

Homestead Notes.....	B 2
Home On The Range.....	B 6
Cook's Question Corner.....	B 8
Kid's Korner.....	B10
4-H Happenings.....	C 2

Columns

Now is the Time.....	A10
On Being A Farm Wife.....	B 4
Ida's Notebook.....	B 5
Have You Heard.....	B 5
Microwave Minutes.....	B21
Business Seminar.....	D17

Features

Break Even or Profit.....	A20
All-Breed Calf Sale.....	A26
PA Ayrshire Sale.....	A28
Ayrshire Breeders Conference.....	A29
Millions Starve.....	A31
Charcoal Grilling.....	B 9
Women Learn About Aging.....	B14
House Of His Creation.....	B18
Marinated Chicken.....	B20
Puppies With A Mission.....	B23
Marketing Opportunities.....	C 9