

National Grain Market

St. Joseph, Mo.
Wed., May 4, 1988

CASH GRAINS AND SOYBEANS CLOSED MIXED. WHEAT MARKETS HIGHER SUPPORTED BY MILL BUYING INTEREST AND LIGHT COUNTRY MOVEMENT. RAIN RELIEVED STRESS ON NEW CROP PLANTINGS IN WINTER WHEAT AREAS PIPELINE SUPPLIES TO THE GULF LIGHT CORN MARKETS SLIGHTLY HIGHER ON LIGHT COUNTRY SELLING, PRESURED BY IDEAS MEXICO BOUGHT LESS CORN THAN EXPECTED IN LATEST TENDER SOYBEAN MARKETS DECLINED AS U.S. EXPORT DEMAND SLOWED ON PRESSURE FROM SOUTH AMERICA AND INDIA'S PASSING ON LATEST VEG-ETABLE OIL TENDER

EXPORT NEWS: SOUTH KOREA BOUGHT 46,000 TONNES OF U.S. WHEAT FOR JULY SHIPMENT. EQUADOR IS SCHEDULED TO TENDER TODAY FOR 90,000 TONNES HARD RED WINTER WHEAT FOR JULY/AUG/SEPT SHIPMENT. THE PHILIPPINES BOUGHT 100,000 TONNES OF WHEAT, 75,000 TONNES NORTHERN SPRING/DARK NORTHERN SPRING WHEAT AND 25,000 TONNES WESTERN WHITE FOR JULY MEXICO BOUGHT 129,000 TONNES U.S. NO. 2 YELLOW CORN FOR MAY/JUNE SHIPMENT.

DATE CHANGE YEAR AGO 05/04/88 05/03/88 05/06/87 WHEAT: KANSAS CITY 3.01 UP 3-1 2 91-2 95 MINNEAPOLIS 3.23 1/4 DN 1/4 3.20 PORTLAND 3.28-3.30 UP 2-3 3.06-3.08 ST. LOUIS 2.91-3.05 UP 4 2.94-3.01.

CORN, U.S. NO. 2 YELLOW: KANSAS CITY 2.05-2.10 NC 1.83-1.88 MINNEAPOLIS 1.98 1/4 UP 1/4 1.82 1/4 SO. IOWA 2.03-2.07 1/2 DN 1-NC 1.87-1.88 OMAHA 1.94-1.96 NC-DN 1 1.73-1.75.

SOYBEANS, NO. 1 YELLOW: KANSAS CITY 6.66-6.74 DN 4-5 5.35-5.43 MINNEAPOLIS 6.70 1/4 DN 3 1/4 5.32 1/4 SO. IOWA 6.75-6.79 1/2 DN 2-3 5.35-5.37 1/2 C. ILL. PROCESSORS 6.82 1/2-6.93 1/2 DN 2-3 5.38 1/2-5.43 1/2.

*KANSAS CITY, US NO. 1 HARD RED WINTER WHEAT, ORDINARY PROTEIN. MINNEAPOLIS, US NO. 1 DARK NORTHERN SPRING WHEAT, 14% PROTEIN. PORTLAND, NO. 2 SOFT WHITE WHEAT, ST. LOUIS, NO. 2 SOFT RED WINTER WHEAT.

FUTURES CLOSE KANSAS CITY (JULY) WHEAT 3 08 1/4 UP 1 2 81 1/2 MINNEAPOLIS (JULY) WHEAT 3 07 1/4 UP 2 1/4 2 84

CHICAGO (JULY) WHEAT 3 10 3/4 UP 2 3/4 2 84.

(JULY) CORN 2 13 1/4 UP 1/4 1 88 1/4. (JULY) SOYBEANS 6 94 1/4 DN 3 1/4 5.43 3/4

EXPORT: BARGE OR RAIL, PORT OF NEW ORLEANS OR NORTH TEXAS GULF. NO 1 HARD RED WINTER WHEAT ORDINARY PROTEIN 3.37 UP 2 3 20 1/2 NO 2 SOFT RED WINTER WHEAT 3 26-3 30 UP 2-5 3 13 3 19 NO. 2 YELLOW CORN 2.30-2.31 DN 1 2.04-2.06 NO 2 YELLOW SORGHUM RAIL 3.68 DN 2 BARGE 3.75 UP 2 3.48-3 55 NO. 2 YELLOW SOYBEANS 7.06-7.07 DN 2-3 5.57-5.61.

Westminster Hay

Westminster, Md.
Tuesday, May 3, 1988

Report Supplied by Auction

TOTAL LOADS: 25.
ALFALFA: 72.00-1.02.00.
ALFALFA & GRASS: 1.70 BALE.
MIXED HAY: 1.55-1.70 BALE
TIMOTHY: 72.00.
ORCHARD GRASS: 73.00, 1 45 BALE.
CLOVER: 74.00.
MULCH HAY: 50.00.
STRAW: 58.00-70.00, .50-1 00 BALE.
LOCUST POSTS: 1.80 EA.

Green Dragon Hay

Ephrata, Pa.

Friday, Apr. 29, 1988

Report Supplied by Auction

TOTAL LOADS: 130.
ALFALFA: 55.00-180.00.
MIXED HAY: 45.00-167.00
TIMOTHY: 62.00-112.00.
CLOVER: 120.00.
RYE HAY: 61.00.
OATS: 2.10-2.30 BU.
EAR CORN: 17.00-91.00.
CORN FODDER: 25.00-31.00.
STRAW: 51.00-85.00.

King's Hay

Kirkwood, Pa.

Tuesday, May 3, 1988

Report Supplied by Auction

TOTAL LOADS: 46
ALFALFA: 55.00-145.00, MOSTLY 102.00-138.00.
ALFALFA MIX. 47.00-142.00.
MIXED HAY: 53.00-125.00.
TIMOTHY & TIMOTHY MIX 109.00-132.00, 1 AT 75.00.
CLOVER & CLOVER MIX 92.00
CORN FODDER: 53.00.
OATS HAY: 53.00.
GRASS HAY: 57.00-75.00
STRAW: 65.00-96.00.

Keister's Hay

Middleburg, PA

Tuesday, May 3

Report supplied by auction

TOTAL LOADS: 37 LOADS HAY.
ALFALFA: 110.00-160.00.
MIXED HAY: 35.00-160.00.
OATS: 21.0 & 2.30 BU.
EAR CORN: 75.00-80.00.
STRAW: 97.50.

Frederick Co.

Hay

Buckeystown, Md.

Thursday, May 5, 1988

Report Supplied by Auction

TOTAL LOADS. 12. RAINY- SMALL RUN. MARKET STEADY.
ALFALFA MIX: 1 AT 85.00.
TIMOTHY HAY: 3 FAIR TO GOOD, 85.00-102.00, 1 BIG RND. BALE, 40.00.
STRAW: 7 FAIR TO GOOD, 57.00-76.00.

WE WILL CONTINUE SALES THROUGH THE MONTH OF MAY AND THEN CLOSE FOR THE SUMMER.

North Jersey Market

Hackettstown, N.J.

Tues., May 3, 1988

Hay—Straw & Grain Report

MIXED 2 00 BALE.
TIMOTHY HAY 2 00 BALE
GRASS HAY 2 00 BALE
STRAW 1 70 BALE
TOTAL 6.

Leinbach's Hay

Shippensburg, PA

Apr. 30 & May 3

Report supplied by Auction

ALFALFA: 84.00-165.00.
MIXED HAY: 45.00-104.00.
TIMOTHY: 66.00-105.00.
CLOVER: 42.00-77.50.
OATS: 1.70 BU.
EAR CORN: 82.00-94.00.
GRASS: 62.00-75.00.
STRAW: 38.00-67.00.

Dewart Hay

Dewart, PA.

Monday, May 2, 1988

Report Supplied by Auction

TOTAL LOADS: 23 LDS. HAY, 52.00-125.00.
EAR CORN: 64.00 & 66.00.
STRAW: 2 LDS., 50.00 & 80.00.
WOOD: 4 LDS., 23.00-36.00/LD.

Keister's Livestock

Middleburg, Pa.

May 3, 1988

Report supplied by PDA

CATTLE 369. PDA. COMPARED WITH LAST TUESDAY'S MARKET: SLAUGHTER STEERS UNEVEN, ABOUT STEADY; COWS UNEVEN, \$1 LOWER TO \$1 HIGHER. HIGH CHOICE & PRIME SL. STEERS 74.25-76, CHOICE 1100/1700 LBS. 70-74.25, FEW TO 75.25, FEW SELECT 64-69.75, CHOICE HOLSTEINS 67.50-71.75, FEW SELECT 63.00-66.00. CHOICE SL. HEIFERS 66.00-71.85, COUPLE 72.75, FEW SELECT 59-64.00. BREAKING UTILITY & COMMERCIAL SL. COWS 49-54.50, COUPLE TO 55.00, CUTTER & BONING UTILITY 50.00-54, CANNER & LOW CUTTER 46.00-50, SHELLS DOWN TO 42.00 YIELD GRADE NO. 1, 1025/2050 LBS. SL. BULLS 58.00-65.00. FEEDER CATTLE: FEW MEDIUM FRAME NO. 1, 300/600 LBS. BULLS 65.00-75.00.

CALVES 143. FEW CHOICE VEALERS 119.00-132, STANDARD AND GOOD 70/100 LBS. 106.00-119.00. FARM CALVES: HOLSTEIN BULLS 85/130 LBS. 120.00-175.00; HOLSTEIN HEIFERS 80/200 LBS. 117.00-151.00. HOGS 600. BARROWS AND GILTS ABOUT STEADY. US NO. 1, 200/240 LBS. 46.00-47.75, 1-2 210/245 LBS. 45.00-46, 2-3 200/250 LBS. 44.00-45, 2-4 190/270 LBS. 38.00-44.00. US NO. 1-3 260/660 LBS. SOWS 32.00-35, 2-3 270/575 LBS. 27.00-32.00. BOARS 29.00-31.50.

FEEDER PIGS 323. US NO. 1-3 25/40 LBS. FEEDER PIGS 35.00-41.00, 40/60 LBS. 40.00-46.50 — ALL PER HUNDREDWEIGHT.

SHEEP 61. FEW CHOICE 20/50 LBS. SPRING SLAUGHTER LAMBS 104.00-150, CHOICE 60/100 LBS. 85.00-94.00. SLAUGHTER EWES 31.00-39.00.

GOATS 20. LARGE 33.00-71.00, KIDS 19.00-38.00 — ALL PER HEAD.

GRAIN & LIVESTOCK HEDGING SERVICES WITH



Jim Rohrbaugh, Account Executive
E.F. Hutton & Company Inc.
P.O. Box 3151, Harrisburg, PA 17105
(717) 763-1611
(800) 822-9553 In-state
(800) 334-3119 Out-of-state

Green Dragon Livestock Sales



Location: Ephrata RD 4. 1 mile N. on North State St., Ephrata.

COWS COWS COWS SALE EVERY FRIDAY

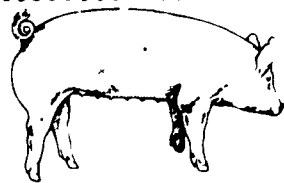
Lots of good Northern Feeder & Stockers. Slaughter Cows - Bull Steer, Veal-lamb.

11:00 A.M.-Beef Sale 200-300 each week.
1:00 P.M.-Dairy Sale.
7:00 P.M.-Small Animal Sale.

For Special Sales and Herd Dispersals on farm or at our barn or other market information call: Office 717-733-2444, Home 717-838-4318.

WALTER H. RISSER, Proprietor

All out of state and new buyers must have cash or certified check or current letter of credit from bank.



EMERY'S BUYING STATION

OPEN TO RECEIVE YOUR MARKET HOGS AT THE GREEN DRAGON MARKET RD 4, EPHRATA, PA 17522 1 MILE NORTH OF EPHRATA ON NORTH STATE STREET.

Will Be Closed May 10 Due To Green Dragon Heifer Sale

HOURS: MONDAY, TUESDAY, and WEDNESDAY 7:00 A.M. to 11:30 A.M.
215-458-5677 Residence
717-733-9648 Office

215-458-5677 Residence
717-733-9648 Office

YOU ARE PAID FOR YOUR HOGS IMMEDIATELY

Ken & Lois Emery, Proprietors

HAY & STRAW AUCTION EVERY THURSDAY AT 1 PM VINTAGE SALES STABLES, INC.
10 miles East of Lancaster on Rt. 30, Paradise, PA
717-442-4181 or 768-8204
L. Robert Frame, Mgr.

KING'S AUCTION KIRKWOOD
Hay, Straw and Grain Auction EVERY TUESDAY 12:00
Located Rt. 472 5 miles south of Quarryville or 6 miles north of Oxford corner of Rt. 472 and Noble Road at Rouse Tobacco Station.
Lloyd H. Kreider, Auctioneer AU-000513L
No out of state checks ALL TRUCKERS AND FARMERS WELCOME

NOTICE: May 5 Was Our Last Hay Sale For The Season
ROTH SALES
Rt. 472, Kirkwood, PA
717-529-6249

PLEASE NOTE!
Change of Location to Home Farm On Hill Rd.

FRIDAY, JUNE 3 - 1:00 PM ON THE FARM MONTHLY

BRED GILT SALE

Sale To Start Promptly Every 4 Weeks
Located 4 miles east of former location, 1 mile off 472 midway between Quarryville & Oxford, PA, 1 mile south of Kirkwood, turn west off 472 at Union Church (Street Rd.) 1 mile to crossroad turn left, 2nd farm on right. Hill Road. Watch for sale signs.

Validated Brucellosis Free Herd #169
Qualified Pseudorabies Free Herd #55

50 to 60 Head
We will no longer have White Diamonds, it will be the next generation or F2's crossbred to Chester White. Very nice gilts.

Vaccinated for Lepto, Erysipias, Rhinitis, E'Coli, Pasteurella

Hand mated with Breeding Dates
Local Truck Available
No Hogs Sold On Commission

JOHN B. STOLTZFUS
R.D. 1, Kirkwood, Pa.
Abe Diffenbach, Auctioneer AU225L
NEXT SALE FRI., JULY 1, 1:00 P.M.



Be Wise . . . Check our prices before you buy!!

SPRAY MATERIALS

- * ATRAZINE
- * BLADEX
- * EXTRAZINE
- * DUAL
- * BANVEL
- * FURADAN
- * LASSO
- * LOROX
- * COUNTER
- * SUTAZINE
- * PARAQUAT
- * LORSBAN
- * ROUND UP
- * PRINCEP
- * DYFONATE
- * LASSO-ATRAZINE
- ETC.

SAVE ON BULK HERBICIDES

- BICEP • LASSO-ATRAZINE • PROWL
- EXTRAZINE • DUAL • BLADEX • LASSO MT

MELVIN R. WEAVER

2213 Leabrook Road, Lancaster, PA 17601
Ph: 717-569-6576 or 898-8354