

Public Auction Register

Closing Date Monday 5:00 P.M. of each week's publication

CONSIGNMENT SALE

Selling Hay, Straw, Grain & Firewood

Every 2nd to Last Saturday of the Month

Consignments Welcome



RD 3 Millburg, PA 17844

KEN MARTIN, Manager

Phone: 717-966-1151 • 717-524-7070

SAT MAY 14 - 9AM Antiques, Collectibles, Household, Butcher Tools & Equipment, Miscellaneous, Guns Located in Herndon Pa., Northumberland County South End of Herndon, just off Rt 147 12 miles South of Sunbury, Pa For Mrs Edwin F (Mildred) Wolfe Mark J Jones, Auct

Vehicles Located along Rt 54, 3 mi East of Danville, 4 mi West of Elysburg, Northumberland Co., Pa By Hurst General Supply Aucts Paul E Martin & John D Stauffer

SAT. MAY 14 9AM Benefit Auction Quilts, Childrens Auction at 11:00 am Large Craft Auction, Miscellaneous Items, 12 Loads of Bark Mulch Located 2 1/2

SAT MAY 14 - 9AM - Building Materials, Supplies,

miles southwest of Mt Joy, Pa. along Kraybills Church Road Conducted by Miller's Auction Service

SAT. MAY 14 - 10 AM 14 acre farmette and personal property Located along Rt 401, between Morgantown and Elverson, Chester Co, Pa Norman and Gladys Jane Detwiler, owners Alvin Horning, Merle Z Eberly, aucts

SAT MAY 14 - 10AM Grade Heifer Sale New Holland Sables Stables, Inc

SAT MAY 14 - 10AM Contractor Equip Auction Held at the company yard 1/4 mi S Rt 390 expressway exit 4 on Poags Hole Rd, Dansville, NY Babcock Enter-

prises, Ltd Roy Teitsworth, Inc., Auct.

SAT MAY 14 - 10AM 4 Tractors & Vegetable Farm Equip. Rt 38, Mt. Holly, NJ (between Miller Ford & Kar-don Chev) For Richard E Jones Richard P Allen, Auct

SAT. MAY 14 - 10AM Furniture & Farm Machinery. At Miller Auction House. Sam. A Miller, Auct

SAT MAY 14 - 10AM Park-land Schools Surplus Auction Computers, Typewriters, A V & Physical Ed Equip, Cabinets, Metal Lathe & Power Shop Tools 1 1/2 mi S of Fogelsville, 2 mi N of Trexlertown along Rt 100 - at the Fogelsville

Elem. School, Lehigh Cty., Pa. Houser Aucts.

SAT. MAY 14 10AM Furni-ture and antiques from the Evelyn Blaine estate of Wil-mington and others at Rud-nick's Sales, route 213, Galena, MD Harry Rudnick & Sons, aucts.

SAT MAY 14 10AM Farm Machinery, Horses & Related Items, Dairy Equip-ment, Household. Located on Route 14A, 4 miles south of Dundee, N.Y. 11 miles North of Watkins Glen For Alvin Mast Howard W Vis-scher, auct

SAT MAY 14 - 11AM Stain-less Steel Top Poultry Equip., Feeders, Water Fountains, JD B Tractor & Other Farm Equip On Rehrrsburg to Straus-stown Rd, 2 mi E of Rehrrsburg & 3 mi W of Strausstown, Berks Co For Vernon & Mable Snyder Auct. Dwight D. Miller

SAT. MAY 14 - 2PM 20 Head Standard Bred Drv-ing Horses In Gordonville, Pa. Terms by Elam B Stoltzfus.

Public Estate Auction
Saturday, May 14, 1988
at 9:00 A.M.

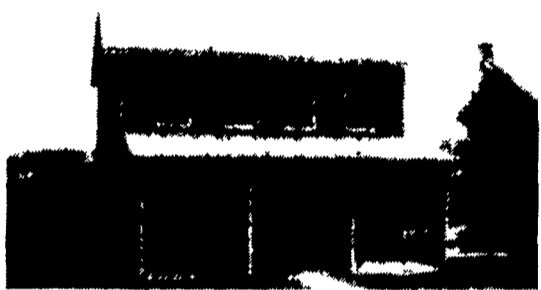


Located just off Rt. 11 & 15 in the village of Port Trevorton, Union Twp., Snyder County, Pa. (situated near center of town). (Located 7 miles south of Selinsgrove or 40 miles north of Harrisburg, Pa.)

REAL ESTATE

Real Estate consists of a lot w/50 ft. of road frontage along old 11 & 15 in village of Port Trevorton & also 50 ft of road frontage along new Rt. 11 & 15 by 150 ft. in depth for a total of 7500 square feet, more or less, whereon is erected a 2 1/2 story frame dwelling. First floor of home has kitchen, dining room and double living room. Second floor has 3 bedrooms and a bathroom. Interior of home has been fully remodeled and exterior of home has aluminum siding, storm windows, and a relatively new roof. Home is heated by a coal furnace and has a front porch full width of home. This home is very versatile for it could be used for a starter couple, a family, retired couple, or a rental. Be sure to inspect this home in this small centrally located village with conveniences of Post Office, Store, Restaurants, and Service Station nearby, arrange your financing, and be prepared to bid on and buy this home on Auction Day. Designated as lot #98 on the tax assessment map and recorded in Snyder County Deed Book 78, Page 486.

TERMS: 10% down payment day of Auction. Balance within 30 days. To be offered at 12 noon. For showing of Real Estate call (717) 374-9868 or (717) 374-6146.



ANTIQUES - COLLECTIBLES

Oak Sideboard Buffet w/Beveled Mirror & Claw Feet on the Upper Frame, 2 Drawers in Middle, 1 Drawer across Bottom, Glass Oak Frame Door and Glass Bow Sides (very rare and in good condition); Oak Round Pedestal Table w/3 Boards; Oak Dresser w/Beveled Mirror in S Frame w/Applied Carvings, Dovetailed Drawers (two top drawers are serpentine, however, bottom drawer doesn't have original hardware); Cottage Style Dresser w/Two Small Drawers over Two Large Drawers; Vic-trola; Quilting Frame; Tulip Quilt; Star Quilt; Wheel Type Quilt; Set of (4) Partial Cane Back Curved Back Chairs; Plank Bot-tom Rocker; Reverse Painting of Capital Building in Oval Frame; Dropleaf Table; 42" One Room School Desk w/Folding Seat; Odd Wooden Chairs; Old Baby Buggy; Several Crocks; #12 Griswald Fry Pan; Asst. Cast Fry Pans; Large Collection of Avon Bottles; Graniteware; Early Postcard of Freeburg; Large Selection of Old Albums (some including Doc Williams, Little Jimmy Dickens, Monroe Bros. & many more); Small Metal Toys; Red Ruby Glassware; 1978 Sel. Cynosure; Sm. Col-lection of 15 Arrowheads; (2) Dovetailed Powder Boxes; Chalk Figurines; Silvertone Sm. Train Shifter; Plastic Lionel Caboose #6257; Plastic Freight Car 6464; Plastic Sunoco Oil Car; Plastic NYC Coal Car 6462; Old Photo Album (some metal pictures); Flower Design Glass Water Pitcher & 6 Glasses (at least 65 years old); Old Collectible Plastic Bubble Bath Con-tainers of the Following: Mighty Mouse, Bugs Bunny, Casper, Alvin, Theodore, Woody Woodpecker, Goofy, Rocky, Santa Claus, Deputy Dog, Frankenstein, Snoopy, Smokey Bear, Porky Pig, & others; Watch Fobs including Ingersoll Rand, Cater-pillar, Rockwell Steel & others; 1915 North. County Dog License; app. 200 asst. sets of Salt & Pepper Shakers; Wheat Design Dishes; Dry Racks; Old Pocket Knives; Corn Dryer, Carnival Glass; Shirley Temple Pitcher; JFK Plate; Doc Williams Plate; Bear Bank; Souvenir Basket of Altoona, Pa. marked Germany; & many more items of interest.

BOOKS

Family Medical Guide by Better Homes & Gardens; Shirley Temple & the Screening Spector Book; Goodes School Atlas, 1936 Susq. Flood Scenes; Pa. Dutch Wit & Humor Joke Book; 1937 Comm. of Pa. Game Law Book; Descriptive Atlas of the U.S. copyright 1887; much Newspaper Paraphernalia; JFB 4 Day Book copyright 1964; JFK Torch is Passed Book; Life & Words of JFK by James Wood; Warren Report of the Assassination of JFK; Beverly Hillbillies Book; & more books.

APPLIANCES - HOUSEHOLD FURNISHINGS

Kelvinator Refrigerator Freezer; GE 30" Electric Stove; Signature Chest Type Deep Freeze; GE Heavy Duty Electric Clothes Dryer; (2) Maytag Wringer Washers (one doesn't work); 3 pc. Solid Maple Bedroom Suite which includes Double Bookshelf Bed, Dresser w/Mirror, & 5 Drawer Chest of Drawers, Double Wooden Bed; Double Metal Bed; (3) Double Mattresses; Dou-ble Spring & (2) Double Box Springs; Robeson 22,500 BTU Kerosene Heater; Sliding Two Door Glass Cabinet; 16" Oscillat-ing Fan (like new); (2) 20" 3 sp. Fans; Asst. Trophies; (2) Large Thermos Ice Chests, Magazine Rack End Table Combina-tion; Round Card Table; Record Cabinet; Floor Lamps; B&W Portable T.V.; (2) Playpens; Porch Swing; Eureka Cannister Sweeper; Spantan Portable Sewing Machine; Kitchen Utensils; Pots; Pans; Large Asst. Dishes; & many more items of interest.

LAWN, GARDEN, SHOP ITEMS

Dynamark 1136 Lawn Tractor (good condition); Front-line Rototiller; 18" Power Mower; Set of (4) Heavy Roller Casters; Wheelbarrow; (2) Potato Forks; (2) sets of Saw Horses; Lock Level; Ax; Hand Cultivator, (3) 4 ft. Fluorescent Shop Lights; etc.

GUNS

444 Cal. Marlin Lever Action Rifle Model 444-S w/2 1/2 x 7 Weaver Scope w/Sling 260537; 45 Cal. Connecticut Valley Arms Reproduction Flintlock Muzzleloader w/Octagon Barrel & Ram Rod 00729, Winchester 12 ga. 3" Magnum Pump Model 1200 w/Sling L4670; Marlin 10 ga. Bolt Action w/3 1/4" Chamber, Long Barrel 237539; Remington 22 Cal. Model 514 Single Shot; Stevens 16 ga. Double Barrel Shotgun Model 53 A-A w/Engraved Hunting Dog; Bayonet

TERMS: Cash or Pa. Check. ID Required.

ATTORNEY: John R. Moore

719 N. Mkt. St., Selinsgrove, Pa. 17870

Phone (717) 374-8138

DALE L. LONGACRE, Auctioneering

Phone (717) 374-4215 #AU-001899-L

Roger A. Lauver - #AA-001424-L

Dean E. Longacre - #AA-001645-L



Estate of: PAUL W. DRUM, SR.
Executors: Bruce A. Drum
Paul W. Drum, Jr.

AUCTION WILL BE HELD RAIN OR SHINE!
OWNER AND AUCTIONEER NOT RESPONSIBLE FOR ACCIDENTS
Lunch Stand by Withners Church

HEAVY EQUIPMENT AUCTION

SAT., MAY 21, 1988 at 10:00 A.M.
WELLSBORO, PA.

Located on Rt. 6, 3 miles west of Wellsboro.

SELLING: 7 - dozers, 2 - Drott Cruz-Air 40 BYR excavators, J.D. backhoe, Trojan loader, Blaw-Knox PF 65 paver, Austin Western Pacer 300 grader, Cat scraper, 3 rollers, 3 tandem dump trucks, 2 tandem truck tractors, 3 pickups, Chev. boom truck, single axle dump with Koenig 3-way dump box, 35 ton detachable lowboy, 28' aluminum dump trailer, 40' flatbed trailer, Allmand light plant.

ALSO SELLING: Buckets, brush hog, fuel tanks, pickup tool boxes, power plant, water pumps, 18" magnet, Eaton trans. & rears, small trailer, 8 steel tanks (66"x24'), wheels, hoist cylinder, garage items, etc.

OWNERS:

GRA-HIL CONSTRUCTION, INC.

Detailed listing later

Brochure mailed upon request

Sale site phone: 717-724-4730

Ask for Joe

Airports and motels nearby

Managed and sold by:

DICK CRITTENDEN AUCTION CO.

MANSFIELD, PA. 16933

717-662-3131 or 662-3409

PA. LIC. #AU000191-L

PUBLIC AUCTION OF

ANTIQUES - FURNITURE -
AUTOMOBILE - COINS -
COLLECTIBLES &
PERSONAL PROPERTY
TUES., MAY 10, 1988
AT 8:30 A.M.

At Chancelord Twp. Com-munity Bldg., Brogue, York County, Penna. Lots of antiques, furniture, appliances, 1980 Pontiac Bonneville 4 dr. sedan A title, 28,848 miles, clean car, aut., P.S., P.B., AC, also asst. dates of coins in silver dollars, \$1.00, \$2.50, \$5.00 & \$10.00 gold coins, 100 Indian cents & other coins, dishes, glass, collec-tibles, etc., etc.

NOTE: There may be 2 aucts. selling for part of the day. PREVIEW SHOW-ING: Mon. eve., May 9, 7 P.M. to 8 P.M.

TERMS: Cash or approved check.

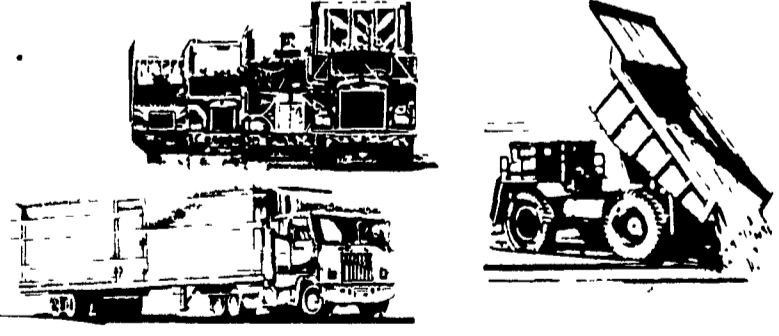
JACOB A. GILBERT &
BRIAN L. GILBERT,
AUCTIONEERS
Pa Lic. #336 & #2256

COMBINATION AUCTION

AT
NEW HOLLAND SALES STABLES
NEW PAVILION

12 Miles East of Lancaster, Pa. just off
Rt. 23, New Holland, Pa.

TUESDAY, MAY 17, 1988 5:30 P.M.



COMMERCIAL VEHICLES and RV's



YOU CAN BUY!-----YOU CAN SELL!

Cash, current bank letter, or certified
Security check needed to buy. Dealer
Fence Notary Public on premises. Rates

For More Information Call Abe Diffenbach 225L
At 717-354-4341