

**Westminster Livestock Auction**

Hagerstown, Md.  
Tuesday, April 3, 1988  
Report supplied by auction

SLAUGHTER COWS: HIGH YIELD 54.00-55.00; UTILITY 48.00-54.00; CANNERS 46.00-50.00; SHELLY 45.00-DOWN. BULLS- GOOD 61.00-63.00; FAT 53.00-58.00. FED STEERS- CHOICE 70.00-72.25; SELECT 65.00-70.00; CH. HOLSTEIN X 1,625 LB. TO 65.25. FED HEIFERS- 900-1300 LBS. CH. 63.00-70.50; SELECT 60.00-65.00. VEAL CALVES- CHOICE 1280 LB. AT 118.50; 1 175 LB. AT 109.00; KILLERS 80-100 LBS. 100.00-115.00; 60-80 LBS. 95.00-110.00. FARM CALVES- HOLSTEIN BULLS 125-140 LBS. 125.00-145.00; 90-120 LBS. 125.00-160.00; 80-90 LBS. 112.00-157.00. HOLSTEIN HEIFERS- 95-105 LBS. 118.00-144.00; BEEF TYPE 85-120 LBS. 117.00-144.00. BUTCHER HOGS- 1 LOT #1&2 240 LBS. AT 44.50; 215-240 LBS. NO. 1 & 3 43.50; 250-280 LBS. 40.00-42.00; 195-210 LBS. 42.00-42.50. SOWS- 400-500 LBS. 32.00-33.00; 500-750 LBS. 33.00-34.75; THIN & ROUGH 28.00-30.50. BOARS- GOOD 28.75; ROUGH 25.00-26.50.

STOCK CATTLE: STEERS- 200-300 LBS. 100.00-112.00; 300-500 LBS. 83.00-92.00; MD. 72.00-80.00; 500-700 LBS. 69.00-79.00. HOLSTEINS 63.00-66.00; 700-950 LBS. 62.00-70.00. HEIFERS- 300-500 LBS. 72.00-82.00; MD. 65.00-71.00; 500-700 LBS. 61.00-72.00; 700-900 LBS. 53.00-63.00. BULLS- 600-700 LBS. 65.00-73.00; 1 800 LB. 60.50; 1 1040 LB. 57.75. LAMBS- 25-30 LBS. 90.00-105.00, 40-90 LBS. 82.00-92.00; 95-110 LBS. 82.00-84.50; MD.-GD., ALL WEIGHTS 70.00-78.00. SHEEP- 100-150 LBS. 20.00-28.00; 160-300 LBS. 18.00-24.00. GOATS- LG. 72.00; MD. 38.00-50.00; SM. 22.00-35.00; YOUNG KIDS 11.00-20.00. PIGS & SHOATS- 100 HD: 20-30 LBS. 23.00-36.00; 30-45 LBS. 27.00-44.00; 70-80 LBS. 41.00-49.00; BY THE LB: 4 HD. 190 LBS. 43.00; 2 HD. 105 LBS. 54.00.

NOTE: THE LAST SPECIAL FEEDER CATTLE SALE FOR THIS SPRING WILL BE NEXT TUESDAY, MAY 10.

**Eighty-Four Livestock Auction**

Eighty-Four, Pa.  
Mon., May 2, 1988

CATTLE 287...PDA...Compared with last Monday's market: Slaughter cows weak to 58.50-65, few Utility 50-54.00. Choice sl. heifers 66.00-71.50, Select 62.00-65, Standard 55-60.50, few Utility 50-54.00. Breaking Utility & Commercial sl. cows 50.75-55, yield grade 4-5, 45.00-48, Cutter & Bon. Utility 48.00-52, Canner & Low Cutter 39.00-48, Shells down to 34.00. Yield Grade No. 1, 1020/1800 lbs. sl. bulls 55.00-69.50, few No. 2, 1100/1400 lbs. 51.00-54.50. Feeder Cattle: Medium Frame No. 1, 300/500 lbs. steers 80.00-99, 600/850 lbs. 68.00-74, Medium #2, 400/700 lbs. 65.00-80.00. Medium Frame No. 1, 450/650 lbs. heifers 65.00-75, Large 325/600 lbs. 71.00-82, Med. & Large #2, 300/400 lbs. 60.00-70.00. Medium Frame No., 1, 300/700 lbs. bulls 68.00-88.00.

CALVES 164...Few Choice vealers 117.00-132.50, Good 100.00-120, Standard and Good 90/120 lbs. 89.00-100, 60/85 lbs. 78.00-90, few Utility 45/70 lbs. 40.00-60.00. Farm Calves: Holstein bulls 90/125 lbs. 105.00-175.00; Hol. Heifers 90/120 lbs. 100.00-167.50. Beef cross bulls & heifers 80/105 lbs. 90.00-140.00.

HOGS 196...Barrows and gilts \$1.50 to \$2 higher. US No. 1-2 210/250 lbs. 43.80-44.10, 1-3 207/255 lbs. 43.25-43.80, lot 2-3 273 lbs. 42.00, lot 1-3 185 lbs. 33.50. US No. 2-3 300/550 lbs. sows 35.00-38, few 2-3 315/600 lbs. 32.00-34.50. Few Boars 25.00-31.00.

FEEDER PIGS 28...Few US No. 1-3 17/30 lbs. feeder pigs 16.00-24.00, few 50/57 lbs. 40.00-42.50 --- all per head. SHEEP 149...Spring slaughter lambs

mostly steady. High Choice & Prime 70/90 lbs. spring lambs 81.00-90, few small lots 28/40 lbs. shorn lambs 91.00-96, Good & Choice 45/50 lbs. feeder lambs 62.50-77.50-95.00. Slaughter sheep 17.00-32.50.

GOATS 14...Large 35.00-42.50 --- all per head.

**East Coast Carlot**

Wed., May 4, 1988

Report supplied by USDA

EAST COAST CARLOT MEAT TRADE DELIVERED PRICES (CAF) BOSTON TO WASHINGTON AREA INCLUSIVE.

COMPARED TO TUESDAY'S CLOSE: TRADING SLOW, SUPPLIES OF VEAL VERY LIGHT. CHOICE AND PRIME SPECIAL FED VEAL GENERALLY SLOW IN NARROW TEST. GOOD AND CHOICE BONING VEAL & .00 HIGHER IN LIGHT TEST AND COMPARISON; NO SALES REPORTED FOR INSHIPPED. CHOICE AND PRIME LAMB NOT ESTABLISHED, GENERALLY STEADY UNDERTONE.

VEAL CARCASS HIDE-ON CHOICE & PRIME SPECIAL FED 50 HEAD

220-280 LBS. FEW 220.00, GENERALLY STEADY.

GOOD AND CHOICE BONING TYPE - HIDE ON NORTHEASTERN SUPPLIERS 50 HEAD

65-75 LBS. FEW 141.00, 6.00 HIGHER.

55-64 LBS. FEW 137.00. 45-54 LBS. FEW 133.00. 35-44 LBS. FEW 129.00. 34 LBS. DWN FEW 127.00.

INSHIPPED 500 HEAD. STEADY WITH MONDAY. NO SALES REPORTED.

**Shenandoah Valley Livestock**

Harrisonburg, Va.  
Sat., April 30, 1988

Report supplied by auction

FEEDER CATTLE TREND: MOSTLY STEADY.

STEERS: M&L-1 300-500 LBS. 93.00-105.50; 500-700 LBS. 84.50-97.25; 700-900 LBS. 71.50-84.25; HOLSTEIN 300-1000 LBS. 63.50-88.00. S-L&M&L-2 300-500 LBS. 88.00-92.50; 500-700 LBS. 72.00-88.00.

FEEDER BULLS: M&L-1 300-500 LBS. 82.00-98.00; 500-600 LBS. 80.00-83.00. S-L&M&L-2 300-500 LBS. 79.00-84.00.

HEIFERS: M&L-1 300-500 LBS. 76.50-87.50, 1 LOT AT 94.00; 500-700 LBS. 69.25-80.00; 700-800 LBS. 62.50-69.25. S-L&M&L-2 300-500 LBS. 72.50-83.50.

STOCK COWS- BEEF W/CALVES 650.00-810.00; BABY CALVES: 67.00-157.00.

SLAUGHTER COWS TREND: UTILITY & COMMERCIAL 2-4 45.00-49.50; CANNER & CUTTERS 1-3 40.50-45.00. SLAUGHTER BULLS: 1&2 56.50-63.75.

LAMBS: TREND \$2 HIGHER. BLUE O HIGH CHOICE & PRIME 88.50; RED O CHOICE WOOLED 85.00; FEEDER LAMBS CHOICE 85.00-89.00.

HOGS: SOWS 1-3 FEW 31.50-34.25; BOARS 29.50.

**Oklahoma City Feed Cattle**

Oklahoma City, Okla.  
Wed., May 4, 1988

WEEKLY CATTLE SUMMARY: FEEDER STEERS AND HEIFERS STEADY TO 1.00 HIGHER THAN LAST WEEK. SLAUGHTER COWS FIRM TO 1.00 HIGHER. SLAUGHTER BULLS STEADY TO WEAK. GOOD DEMAND FOR ALL CLASSES. BROAD FEEDER CATTLE BUYER REPRESENTATION.

CATTLE ARE RAPIDLY COMING OFF OF GRAZE-OUT WHEAT PASTURES; BULK OF THOSE GOING TO MARKET ARE YEARLING STEERS AND HEIFERS. SMALL PERCENTAGE OF FEEDER CALVES AND SLAUGHTER COWS IN THE SUPPLY. GRAZING INTERESTS ARE COMPETING WITH FEEDLOTS FOR THE THIN YEARLINGS; HOWEVER LARGE PERCENTAGE OF OFFERINGS ARE CARRYING MODERATE FLESH. RECEIPTS THIS WEEK 21,600; LAST WEEK 19,284; LAST YEAR 23,704. COWS AND BULLS 2% OF TOTAL BULK SALES FOR THE WEEK FOLLOW:

FEEDER STEERS: MEDIUM AND LARGE FRAME 1, 260-325 LB. 119.00-128.00; 425-500 LB. 97.00-102.00; 500-550 LB. 91.50-99.50; 550-600 LB. 88.00-99.00; 600-650 LB. 83.75-89.00; 650-700 LB. 79.50-86.50; 700-750 LB. 77.00-83.00; 750-800 LB. 76.00-80.75; 800-900 LB. 74.50-78.00; 900-1000 LB. 70.50-76.00.

FEEDER HEIFERS: MEDIUM AND LARGE FRAME 1, 335-370 LB. FEW 95.50-98.00; 400-450 LB. 85.00-93.25; 450-500 LB. 84.50-88.00; 500-550 LB. 81.75-86.75; 550-600 LB. 76.00-82.75; 600-650 LB. 74.75-78.75; 650-700 LB. 73.50-76.50; 700-800 LB. 72.00-75.50; 800-875 LB. 69.50-73.50.

SLAUGHTER COWS: BREAKING UTILITY AND COMMERCIAL 3-5 46.00-51.00. CUTTER AND BONING UTILITY 1-2 46.50-52.00. CANNER AND LOW DRESSING CUTTER 1-2 42.25-47.00.

SLAUGHTER BULLS: Y.G. 1, 1000-1500 LB. 58.50-64.00; 1500-2150 LB. 61.00-67.00.

**New Holland Horses**

New Holland Sales Stables  
New Holland, PA  
Monday, May 2, 1988

Report supplied by Auction

REGISTERED RECEIPTS OF 293 HEAD OF HORSES, MULES AND PONIES. MARKET: LOWER.

LOCAL

DRIVING HORSES: 400.00-875.00.

RIDING HORSES: 350.00-550.00.

LIGHTWEIGHT KILLERS: 175.00-400.00.

HEAVYWEIGHT KILLERS: 450.00-560.00.

MARE PONIES: 35.00-75.00.

COLTS: 15.00-35.00.

GELDING PONIES: 35.00-75.00.

LARGER PONIES: 125.00-230.00.

**Dewart Livestock Auction**

Dewart, Pa.  
Mon., May 2, 1988

CATTLE 149...PDA...Compared with last Monday's market: Slaughter cows about steady. few Choice sl. steers 67.75-71.75, Select 63.00-67.75, few Choice holsteins 65.00-67.00. Few Choice sl. heifers 65.00-72.00. Breaking Utility &

Commercial sl. cows 48.50-53.75, couple 55.00, Cutter & Bon. Utility 48.00-54, few Canner & Low Cutter 45.00-49, Shells down to 35.00. Few Yield Grade No. 1, 1100/2700 lbs. sl. bulls 60.25-65.25. Feeder Cattle: few Medium Frame No. 1, 450/700 lbs. steers and bulls 69.00-79.00. CALVES 159...Few Choice vealers 128.00-131, few Good 110.00-120, Standard and Good 70/90 lbs. 96.00-112, few Utility 60/80 lbs. 90.00-97.00. Farm Calves: Holstein Bulls 85/130 lbs. 110.00-169.00; Hol. Heifers 85/125 lbs. 135.00-160.00.

HOGS 29...One Lot US No. 1-3 215 lbs. barrows and gilts 43.80, one lot 2-3 265 lbs. 41.80. Few US No. 1-3 400/675 lbs. sows 32.00-34.00. Few Boars 28.00-28.25.

FEEDER PIGS 124...US No. 1-3 25/40 lbs. feeder pigs 34.00-42.00, one lot 60 lbs. 46.00 --- per head.

SHEEP 25...Few Choice 35/55 lbs. spring slaughter lambs 109.00-130.00. Slaughter ewes 25.00-40.00.

GOATS 0...No Market Test.

**Grantsville Livestock**

Grantsville, Maryland  
Saturday, April 30, 1988

HOGS: TOP BARROWS & GILTS 41.50-43.60; HEAVY BUTCHER 36.00-43.00; LIGHT BUTCHER 34.00-41.00; BUTCHER SOWS 30.50-36.50; FEEDER SHOATS 18.00-44.00.

VEAL: GOOD 95.00-125.00; STANDARD 80.00-90.00; UTILITY 60.00-75.00; BULL CALVES 1.00-1.65.

SHEEP & LAMBS: GOOD 80.00-90.00; UTILITY 70.00-75.00; SLAUGHTER EWES 20.00-28.00.

SLAUGHTER CATTLE: STEERS: GOOD 65.00-69.25; STANDARD 62.00-64.00; UTILITY 58.00-60.00.

HEIFERS: GOOD 68.00-70.00; STANDARD 60.00-65.00; UTILITY 50.00-58.00.

COWS: COMMERCIAL 49.00-56.00; UTILITY 44.00-46.00; CANNER & CUTTER 40.50-42.00.

BULLS: COMMERCIAL & GOOD 60.00-70.75; CUTTER & UTILITY 52.00-58.00.

STOCK-FEEDER CATTLE: GOOD 75.00-85.00; MEDIUM 60.00-70.00.

STEER CALVES: GOOD 80.00-92.00; MEDIUM 64.00-75.00.

HEIFER CALVES: GOOD 72.00-85.00; MEDIUM 60.00-70.00.

**Penns Valley Livestock**

Centre Hall, Pa.  
Tuesday, May 3, 1988

Report Supplied by Auction

BEEF COWS: UTILITY AND COMMERCIAL 48.50-53.75; CUTTERS 44.00-48.75; CANNERS 41.25-43.00; SHELLS 38.00.

HEIFERS: COMMERCIAL 47.00-58.50.

STEERS: GOOD 64.50-67.50.

BULLS: GOOD 57.00-59.50; STANDARD 49.00-54.00.

FEEDER CATTLE: 300-500 LBS. LARGE FRAME 70.00-83.00; 300-500 LBS. SMALL FRAME 62.00-71.00; 500-700 LBS. LARGE FRAME 64.00-78.00; 500-700 LBS. SMALL FRAME 60.00-72.00.

VEAL CALVES: GOOD 115.00-129.00; STANDARD 95.00-114.00; UTILITY 73.00-95.00.

FARM CALVES: BULLS 140.00-178.00; HEIFERS 140.00-165.00.

HOGS: 41.50-44.25.

SOWS: 34.00-35.00.

BOARS: 25.00-29.00.

SHOATS: 25-30 LBS. PER HEAD 12.00-21.00; 30-35 LBS. PER HEAD 22.00-32.00.

LAMBS: 48.00-61.00.

GOATS PER HEAD: 12.00-27.00.

**Peoria Sheep**

Peoria, Illinois  
Tues., May 3, 1988

SHEEP: 100 TRADING MODERATE ON LIGHT SUPPLY. COMPARED WITH LAST TUESDAY SPRING SLAUGHTER LAMBS 1.00 TO 3.00 HIGHER; OLD CROP SHORN LAMBS GENERALLY STEADY TO WEAK. SLAUGHTER EWES GENERALLY STEADY. SUPPLY MAINLY CHOICE SPRING SLAUGHTER LAMBS WITH ABOUT 10% EWES.

SPRING SLAUGHTER LAMBS: CHOICE 85-115 LBS. 80.00.

OLD CROP SHORN LAMBS: CHOICE WITH #1 AND 2 PELTS 120 LBS. 75.00.

SLAUGHTER EWES: FEW CULL AND UTILITY 10.00-16.00.

**Special Sale Work Horses, Driving Horses & Mules**

New Holland Sales Stables  
New Holland, PA  
Friday, Apr. 29, 1988

Report Supplied by Auction

LOAD WORK HORSES, VA. P. 1250.00-1800.00, S. 625.00-875.00, DRIVING, OH 675.00-1275.00; PA 650.00-1400.00; NJ, 550.00-1375.00; ME 600.00-1200.00.

LOCAL SADDLEBREDS, KY, 925.00-1275.00.

LOCAL DRIVING 550.00-1325.00; WORK HORSE SINGLES 575.00-830.00, PAIRS 1200.00-1900.00; MULES SINGLES 460.00-900.00.

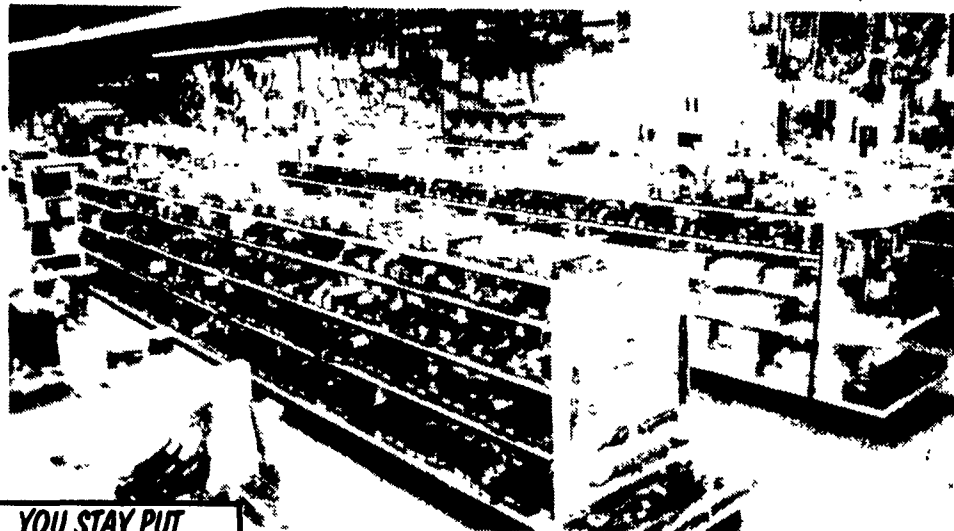
C.B. HOOBER & SON, INC.  
Intercourse, PA  
(717) 768-8231



HOOBER EQUIPMENT, INC.  
Middletown, DE  
(302) 378-9555

TWO LOCATIONS  
*The Saving Place*

**WE SHIP PARTS DAILY**  
VIA UPS - PPSH - BUS - AIR FREIGHT, ETC.



**YOU STAY PUT**  
Pick Up Your Phone And Place Your Parts Order With Us

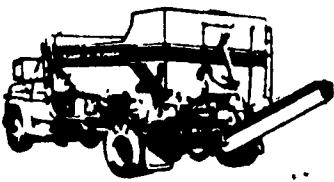
**HOURS**  
Mon.-Fri. 7 AM-5 PM; Sat.: 7 AM-Noon

**CALL US...**  
*It Could Be We Have It*

**Case**  
Authorized UPS Station

**PARADISE CONCRETE**

Metered Concrete @ Competitive Prices  
Air Entrained Concrete  
For Greater Strength  
No Job Too Small! Pay Only What You Use -  
And Do The Job Yourself  
General Contractors Welcome



Perfect For The  
"Do-It-Yourselfer"  
**717-687-0990**  
19 Meadow Lane, Paradise, PA  
Eric R. Probst, Prop.  
Mitch White, Driver