

Central U.S. Carlot

Pork Report
 Tue., May 3, 1988
 Report supplied by USDA
 CENTRAL U.S. CARLOT PORK REPORT FOB OMAHA BASIS INCLUDES MAJOR PRODUCTION AREAS IN MIDWEST AS OF 3:00 P.M. COMPARED TUESDAY'S 3:00PM CLOSE: FRESH PORK LOINS 14-18# 3.00-5.50 HIGHER; BOSTON BUTTS MOSTLY STEADY TO 3.00 HIGHER; SKD HAMS UNEVEN, 17-20# STEADY TO 1.50 LOWER, 20-26# 2.50-3.50 HIGHER; SDLS BELLIES UNEVEN, 12-16# STEADY TO 1.00 HIGHER, 16-18# WEAK TO 1.00 LOWER. TRADE MODERATE TO ACTIVE FOR LIGHT TO MODERATE OFFERINGS AND MODERATE TO GOOD DEMAND. US #2 175 LB HOG CARCASS ADVANCED 1.75 TO \$60.46 PICWT. LOADS PORK CUTS 48.50. LOADS TRIM/PROCESS PORK 17.00.
PORK CUTS
 OMAHA BASIS
 LOINS, REGULAR FRESH
 14-18 LBS. 16.0 LDS. 98.00-105.00.
 18-22 LBS. 3.5 LDS. 99.50-104.00.
 22/UP 76.00 B.
 BNLS. CENTER CUT LOIN
 210.00-219.00 A.
 TENDERLOINS
 2/BAG
 PICNICS
 4-8 LBS. 0.5 LDS. 42.00.
 BOSTON BUTTS
 4-8 LBS. 4.5 LDS. 72.00-74.00.
 SPARERIBS FRESH
 1.5-3.5 LBS. 0.5 LDS. 129.00.

3.5-5.5 LBS. 110.00 A.
 SPARERIBS FROZEN
 1.5-3.5 LBS. 130.00 A.
 LOIN BACKRIBS
 1.5/DN. 0.5 LDS. 235.00.
 1.75/DN 0.5 LDS. 230.00.
 1.75-2.25, 0.5 LDS. 215.00.
 HAMS, SKINNED, FRESH
 14-17 LBS. 1.0 LDS. 69.00.
 17-20 LBS. 3.0 LDS. 62.00-63.50.
 20-26 LBS. 6.0 LDS. 60.00-61.50.
 32/UP 55.00 B.
 HAMS, SKINNED, FROZEN
 14-17 LBS. 70.00-70.50 TIS.
 17-20 LBS. 68.50 TIS.

BELLIES, SDLS. SKIN ON, FRESH
 10-12 LBS. 39.00 E.
 12-14 LBS. 3.5 LDS. 41.00-43.00.
 14-16 LBS. 3.5 LDS. 41.00-43.00.
 16-18 LBS. 0.5 LDS. 38.00.
 18-20 LBS. 3.5 LDS. 32.25-33.00.
 20-25 LBS. 1.0 LDS. 29.00.

PORK TRIMMINGS/ BONELESS PROCESSING PORK (CHEMICAL LEAN)
 COMBO 42% FRESH 5.0 LDS. 31.00-33.00.
 COMBO 72% FRESH 4.0 LDS. 59.25-62.00.
BONELESS PICNIC MEAT
 COMBO 72% FRESH 5.0 LD. 58.00-59.75.
 BOXED 72% FROZEN 1.0 LD. 61.00 TIS.
SKINNED JOWLS
 COMBO FRESH 1.0 LD. 25.50.
 BOXED FROZEN 1.0 LD. 22.00.

CURED & PROCESSED MEATS
 HAMS, SMOKED, SKINNED, WATER ADDED
 16-19 LBS. 67.00-108.00.
 19-23 LBS. 65.00-102.00.
 PICNICS, SMOKED, WATER ADDED
 4-7 LBS. 53.00-67.00.
 BACON, SLICED, VAC. PACK
 1# PKG. 94.00-159.00.
 ABCDE AFTER QUOTES REPRESENT DAYS SINCE LAST ACTUAL MARKET TEST. QUOTES ARE DROPPED AFTER 5 DAYS OF NO TEST OR BEFORE IF THEY NO LONGER REFLECT CURRENT MARKET CONDITIONS.

Central U.S. Carlot

Beef Report
 Wed., May 4, 1988
 Report supplied by USDA
 CENTRAL U.S. CARLOT BEEF REPORT (INCLUDES THE MAJOR PRODUCTION AREAS IN THE MIDWEST, TEXAS AND OKLAHOMA) AS OF 3:00 P.M. COMPARED TO TUESDAY'S 3:00 P.M. REPORT, CHOICE 3 AND SELECT STEER AND HEIFER CARCASSES STEADY; CHOICE 4 STEADY TO \$1.00 HIGHER THAN LAST WEEK. DEMAND AND MOVEMENT MODERATE ON MODERATE SUPPLIES AND OFFERINGS. 10 LOADS OF STEER CARCASSES AND 11 LOADS OF HEIFER CARCASSES TRADED TO PACKER-PROCESSORS. SALES REPORTED ON 67 LOADS OF STEER AND HEIFER CARCASSES.

STEER CARCASSES:
 (33 LOADS REPORTED)
 FOB OMAHA BASIS
 CHOICE 3
 600-900 LBS. 2 LDS. RANGE 107.00, LATEST ESTB. MKT. 107.00.
 CHOICE 4
 600-900# 7 LDS. RANGE 94.00, LATEST ESTB. MKT. 94.00.
 SELECT 1-3
 600-900# 24 LDS. RANGE 101.50-102.00, LATEST ESTB. MKT. 102.00.
HOLSTEIN-TYPE
 CHOICE 1-3
 600-900# LATEST ESTB. MKT. 97.50 A.
 SELECT 1-3
 600-900# LATEST ESTB. MKT. 92.50 A.
HEIFER CARCASSES
 (21 LOADS REPORTED)
 FOB OMAHA BASIS
 CHOICE 3
 550-800# 4 LDS. RANGE 106.00, LATEST ESTB. MKT. 106.00.
 500-550# 1 LD. RANGE 100.00, LATEST ESTB. MKT. 100.00.
 400-500# 1 LD. RANGE 99.00, LATEST ESTB. MKT. 99.00.
 CHOICE 4
 500-800# 6 LDS. RANGE 94.00, LATEST ESTB. MKT. 94.00.
 SELECT 1-3
 550-800# 9 LDS. RANGE 101.00-102.00, LATEST ESTB. MKT. 102.00.
 400-550# LATEST ESTB. MKT. 86.00-87.00 B.
STEER CARCASSES
 FOB AMARILLO BASIS
 (7 LOADS REPORTED)
 CHOICE 4
 600-900# 7 LDS. RANGE 92.50-93.00, LATEST ESTB. MKT. 93.00.

HEIFER CARCASSES
 FOB AMARILLO BASIS
 (6 LOADS REPORTED)
 CHOICE 4
 500-800# 6 LDS. RANGE 92.50-93.00, LATEST ESTB. MKT. 93.00.
STEER AND HEIFER PRIMAL CUTS
 CHOICE 3
 FOB OMAHA BASIS
 HEIFER HINDS
 120-165# 126.00-128.00 D.
 FRONT QUARTERS
 135-210# 88.00 D.
COW AND BULL CARCASSES
 MARKET NOT ESTABLISHED. DEMAND LIGHT.
 FOB OMAHA UT, BRK. 2-4
 450 & UP 76.00 D.
 UT, BNG 1-3
 400 & UP 78.00-79.00 D, 78.00 E.
 500 & UP 80.00-81.00 D, UNQ.
 CUTTER 1-2
 350 & UP UNQ, UNQ.
 400 & UP 90.00 A.
BULL 1-2
 600 & UP 98.00-99.00 E, UNQ.
BONELESS PROCESSING BEEF/ BEEF TRIMMINGS (197 LOADS REPORTED)
 FOB OMAHA BASIS
 90% FRESH 18 LDS. 112.00-113.00, M 113.00, 24 LDS. 112-114, M 113-114.
 90% FROZEN 2 LDS. 113.00, 8 LDS. 114.00-115.00.
 85% FRESH 10 LDS. 102.00-103.00, M 103.00, 3 LDS. 103.50-115.00.
 85% FROZEN UNQ, UNQ.
 75% FRESH 3 LDS. 83.50-84.00, UNQ.
 75% FROZEN UNQ, UNQ.
 65% FRESH 4 LDS. 65.00-66.00.
 50% FRESH 103 LDS. 39.00-42.00, M 39.50-40.50.
 50% FROZEN 14 LDS. 42.00.
 50% BOXED 8 LDS. 40.00-42.00.
 ABCDE AFTER QUOTES REPRESENTS DAYS SINCE LAST ACTUAL MARKET TEST. QUOTES ARE DROPPED AFTER 5 DAYS OF NO TEST OR BEFORE IF THEY NO LONGER REFLECT CURRENT MARKET CONDITIONS.

Peoria Cattle

Peoria, Ill.
 Thurs., May 5, 1988
 COMPARED WITH LAST WEEK'S CLOSE, SLAUGHTER STEERS SOLD STEADY TO .50 LOWER, SLAUGHTER HEIFERS GENERALLY STEADY. SLAUGHTER COWS SOLD GENERALLY STEADY TO FIRM. BULLS WERE NOT WELL TESTED. SUPPLY MAINLY SELECT TO AVERAGE CHOICE SLAUGHTER STEERS AND HEIFERS WITH ABOUT 7% COWS ESTIMATED RECEIPTS THIS WEEK ABOUT 1100 AS COMPARED WITH ACTUAL RECEIPTS OF 1074 A WEEK AGO AND 1175 A YEAR AGO.
SLAUGHTER CLASSES: STEERS:
 CHOICE 2-4, MOSTLY 3 1100-1350 LBS. 72.00-73.75 950-1100 LBS. 69.00-72.50 SELECT & CHOICE 2-3 1000-1200 LBS. 68.00-72.50.
HEIFERS: CHOICE 2-4, MOSTLY 3
 1000-1200 LBS. 71.00-73.50 850-1000 LBS. 68.50-71.00 SELECT & CHOICE 2-3 900-1100 LBS. 67.00-71.00.
COWS: BREAKING UTILITY AND COMMERCIAL 2-3 46.00-49.00 CUTTER AND BONING UTILITY 1-2 44.00-51.00 CANNER AND LOW CUTTER 1-2 40.00-45.00.
BULLS: YG 1-2 1500-2000 LBS. 61.00-64.00.

Agway introduces
NEW Gro:Pak™ With Bovatec®



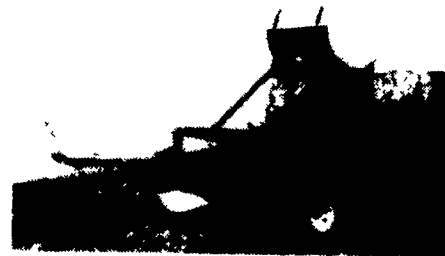
Improve the rate of weight gain by 10-13% in your replacement heifers with Agway Gro:Pak™ with Bovatec®. No body weight restriction means you can feed calves almost from birth and help them conceive and calve at younger ages by consistently improving growth rate. And getting heifers into the production cycle sooner means more dollars to your bottom line! Agway Gro:Pak™ with Bovatec® is a pelleted premix safe for cattle of all

weights. It can be top dressed on silage or grain, blended in a total mixed ration (TMR), or blended with grains. Good palatability means calves or heifers won't back-off feed. And Bovatec is approved for control of coccidiosis in cattle up to 800 lbs. of body weight. That means less death loss and growth setback in your heifers. Call your Agway Farm Enterprise Salesperson or visit your Agway store for more information

Working for people who work the land



Water Wheel Transplanters
 Plant Single Or Double Row On Mulch Plastic Or Bare Ground



We Rent Water Wheel Transplanters - Reasonable Rates. Plant 2 Row Pepper On One Pass

For All Your Irrigation Needs We Carry Drip Systems Nelson Big Guns - Sprinklers Mulch Plastics - Ag-Rain Travels

Zimmerman Irrigation
 Drip Irrigation Specialists
 RD #3, Box 352-A, Ephrata, PA 17522
 215-445-4144