

Belknap Livestock Auction
Dayton, Pa.

Wed., April 27, 1988

CATTLE 70. PDA Compared with last Wednesday's market: Couple Select slaughter steers 65.25&66.25. Choice sl. heifer, one 67.00, few Select 59.00-62, one Standard 54.00. Few Breaking Utility and Commercial sl. cows 49.50-53, Cutter and Boning Utility 48-51.75, Canner and Low Cutter 40.00-47.25, Shells down to 35.00. Standard sl. bullock, one 59.75, couple Utility 51.75&56.25. Couple Yield Grade No 1, 1370/1450 lbs. sl. bulls 62.00&65.75. Feeder Cattle. Few Medium & Large Frame No 1, 675/875 lbs. steers 65.75-73.25. Medium & Large Frame No 1, 490/645 lbs. heifers 66.00-73, few Medium #2, 455/675 lbs. 56.75-59.75, few Large #2. 275/320 lbs. holsteins 77.00-89.00. Few Medium & Large Frame No 1, 580/675 lbs. bulls 66.00-73.50.

CALVES 76. Few Good vealers 100.00-114.00. Standard and Good 90/120 lbs. 90.00-110, 65/85 lbs. 85.00-95.00. Farm Calves: Holstein Bulls 90/125 lbs. 110.00-164.00, Holstein heifers 90/120 lbs. 111.00-158.00. Beef cross bulls & heifers 60/130 lbs. 83.00-147.50.

HOGS 173. Barrows and gilts mostly \$1 higher US No 1-2 230/245 lbs. 42.30-43.00, lot 43.70, 1-3 220/260 lbs. 41.35-42.60, 2-3 215/260 lbs. 40.80-41.25, few 1-3 200/215 lbs. 38.50-41, lot 120 lbs. 41.50. Sows steady US No 1-3 375/525 lbs. sows 32.75-36.00. Boars 25.00-26.00.

FEEDER PIGS 58. US No 1-3 5/20 lbs. feeder pigs 10.00-24.00, 30/45 lbs. 33.00-46.00 -- all per head.

SHEEP 17. High Choice and Prime 70/90 lbs. spring sl. lambs 88.50. Few Slaughter ewes 23.00-25.00.

GOATS 15. Medium & Large 31.50-50.00, one 65.00, few Kids 14.00-21.00 --- all per head.

Lebanon Valley Livestock

Fredericksburg, Pa.

Tues., April 26, 1988

CATTLE 158. PDA...Compared with last Tuesday's market: Slaughter cows uneven, mostly steady to 75 higher. Choice yield grade #2, sl. steer 71.75, yield grade #4, 65.75, few Select 67.75-69.75, few Select & Choice holsteins 1110/1455 lbs. 61.75-65.75, one Prime 1465 lbs. 70.25, few Standard 62.25-65.00. High Choice sl. heifer, one #5, 63.00, one Choice 63.75, one Choice holstein 64.75, two Select hol. 60.50&63.25, few Standard 54.25-59, one Utility 52.25. Breaking Utility & Commercial sl. cows 50.00-54.50, Cutter & Boning Utility 48-52.25, few 56.75, Canner & Low Cutter 46.00-49, Shells down to 40.00. One Choice sl. bullocks 62.25, one Select 64.25, few Standard 59-59.25, one Utility 51.75. Yield Grade No 1, 1290/1950 lbs. sl. bulls 59.75-66.25. Feeder Cattle. Few Large Frame No 2, 270/465 lbs. bulls 71.00-92.00. Large Frame No 2, 365/660 lbs. heifers 57.00-66.00.

CALVES 160. Vealers mostly steady. Few Choice 114.00-117, few Good 95.00-104, Standard and Good 80/100 lbs. 84.00-95, few 70/85 lbs. 70.00-79.00, few Utility 40/80 lbs. 45.00-85.00. Farm Calves: Holstein Bulls 90/125 lbs. 100.00-165, few 85/90 lbs. 90.00-97.00, Holstein heifers 90/145 lbs. 120.00-145.00. Beef cross bulls & heifers 80/100 lbs. 98.00-106.00.

HOGS 176. (Supply includes approximately 60 head of sows). Barrows and gilts small supply steady to \$1 higher US No 1-2, 220/250 lbs. 44.25-45.10, lot 275 lbs. 43.50, lot 198 lbs. 41.85, 2-3 215/265 lbs. 41.50-42.75, few 1-3 135/170 lbs. 34.50-37.50. US No 1-3 305/565 lbs. sows 32.00-34, few 34.75, few 2-3 370/535 lbs. 29.50-31.50, few Medium 260/455 lbs. 24.50-29.50. Few Boars 25.00-31.25, Light

weights (few) 31.00-37.50.
FEEDER PIGS 0. No Market Test.
SHEEP 9. Few Choice 35/60 lbs. spring slaughter lambs 100.00-136.00. Two Slaughter sheep 12.00&21.00.
GOATS 1. Medium 67.50 --- per head.

Eighty-Four Livestock Auction

Eighty-Four, Pa.

Mon., April 25, 1988

CATTLE 282. PDA Compared with last Monday's market: Slaughter cows \$1.50 to \$2 higher. Few Choice sl. steers 67.00-70, few Select 64.67.50, Standard 58.25-63.50, Utility 49-56.00. Few Select sl. heifers 61.50-65.50, Standard 54.00-57, Utility 49.50-55.00. Breaking Utility & Commercial sl. cows 51.50-55, one 57.00, Cutter & Bon. Utility 48.50-52.75, Canner & Low Cutter 40.00-48, Shells down to 33.00. Yield Grade No 1, 1200/2010 lbs. sl. bulls 56.00-62, few No 2, 950/1400 lbs. 50.00-54.00. Feeder Cattle. Medium & Large Frame No 1, 260/325 lbs. steers 90.00-105, 350/550 lbs. 72.00-86.00. Medium & Large Frame No 1, 300/500 lbs. heifers 64.00-87, few 250 lbs. up to 90.00. Medium & Large Frame No 1, 280/500 lbs. bulls 68.00-85.00.

CALVES 172. Few Choice vealers 100.00-115, few Good 88.00-102, Standard and Good 90/120 lbs. 77.00-91, 60/85 lbs. 68.00-79, few Utility 45/60 lbs. 36.00-55.00. Farm Calves: Holstein bulls 90/120 lbs. 104.00-165.00, Hol. Heifers 90/115 lbs. 95.00-160.00. Few Beef cross bulls & heifers 80/115 lbs. 80.00-155.00.

HOGS 196. Barrows and gilts 50 to \$1 higher US No 1-3 220/250 lbs. 41.70-42.60, 1-3 210/260 lbs. 40.50-41.75, 2-3 205/260 lbs. 39.00-40.60. Few US No 2-3 300/550 lbs. sows 34.00-37, few 2-3 315/600 lbs. 30.00-34.00. Few Boars 26.00-30.00.

FEEDER PIGS 21. Few US No 1-3

20/30 lbs. feeder pigs 18.00-26.00, few 35/45 lbs. 28.00-38.00 --- all per head.
SHEEP 189. High Choice & Prime 75/95 lbs. spring lambs 84.00-90, 75/90 lbs. shorn lambs 74.50-85.50, Choice 80/95 lbs. 78.00-83, 40/50 lbs. 75.00-95, few Utility 44 lbs. 36.00. Few Slaughter sheep 18.00-27.00.

GOATS 11. Few Large 55.00-70.00, few Medium 30.00-45.00 --- all per head.

New Wilmington Livestock

New Wilmington, Pa.

Mon., April 25, 1988

CATTLE 289. PDA Compared with last Monday's market: Slaughter Cows .50 to \$1 higher. Choice sl. steers 68.25-72.00, Select 65.50-68.50, Standard 58.00-64.50. Few Choice sl. heifers 65.00-67.75, Select 60.75-65, Standard 55.00-60.00. Breaking Utility & Commercial sl. cows 55.00-55, yield grade 4-5 45-48.50, Cutter & Boning Utility 48.00-53, few high dressing 53.75, Canner & Low Cutter 41-48.25, Shells down to 37.50. Yield Grade No 1, 1195/2135 lbs. sl. bulls 58.50-63, few No 2 1145/1490 lbs. 56.00-57.75. Feeder Cattle. Medium & Large Frame No 1, 300/550 lbs. steers 76.00-90, 575/700 lbs. 68.00-79, 800/1065 lbs. 57.50-65.00. Medium & Large Frame No. 1, 325/595 lbs. heifers 61.00-79.00. Medium & Large Frame No. 1, 610/770 lbs. bulls 60.00-72.00.

CALVES 266. Prime vealer, one 143.00, Choice 122.50-135, few Good 100.00-114, Standard & Good 85/125 lbs. 90.00-100, 65/85 lbs. 80.00-92, Utility 45/60 lbs. 50.00-74.00. Farm Calves: Holstein Bulls 85/135 lbs. 118.00-160, Hol. Heifers 85/120 lbs. 110.00-156.00. Beef cross bulls & heifers 80/140 lbs. 100.00-170.00.

HOGS 695. Barrows and gilts .50 higher. US No. 1-2 220/250 lbs. 42.50-43, 1-3 215/260 lbs. 41.50-42.60, 2-3 220/265 lbs. 41.00-41.75, 1-3 185/200 lbs. 37.00-39, lot 208 lbs. 41.25. Sows mostly .50 lower. US No. 1-3 330/595 lbs. sows 32.00-36.50. Boars 32.00-33.00.

FEEDER PIGS 16. Small Lot US No 1-3 25 lbs. feeder pigs 28.00, few 40/50 lbs. 32.00-37.00 --- all per head.

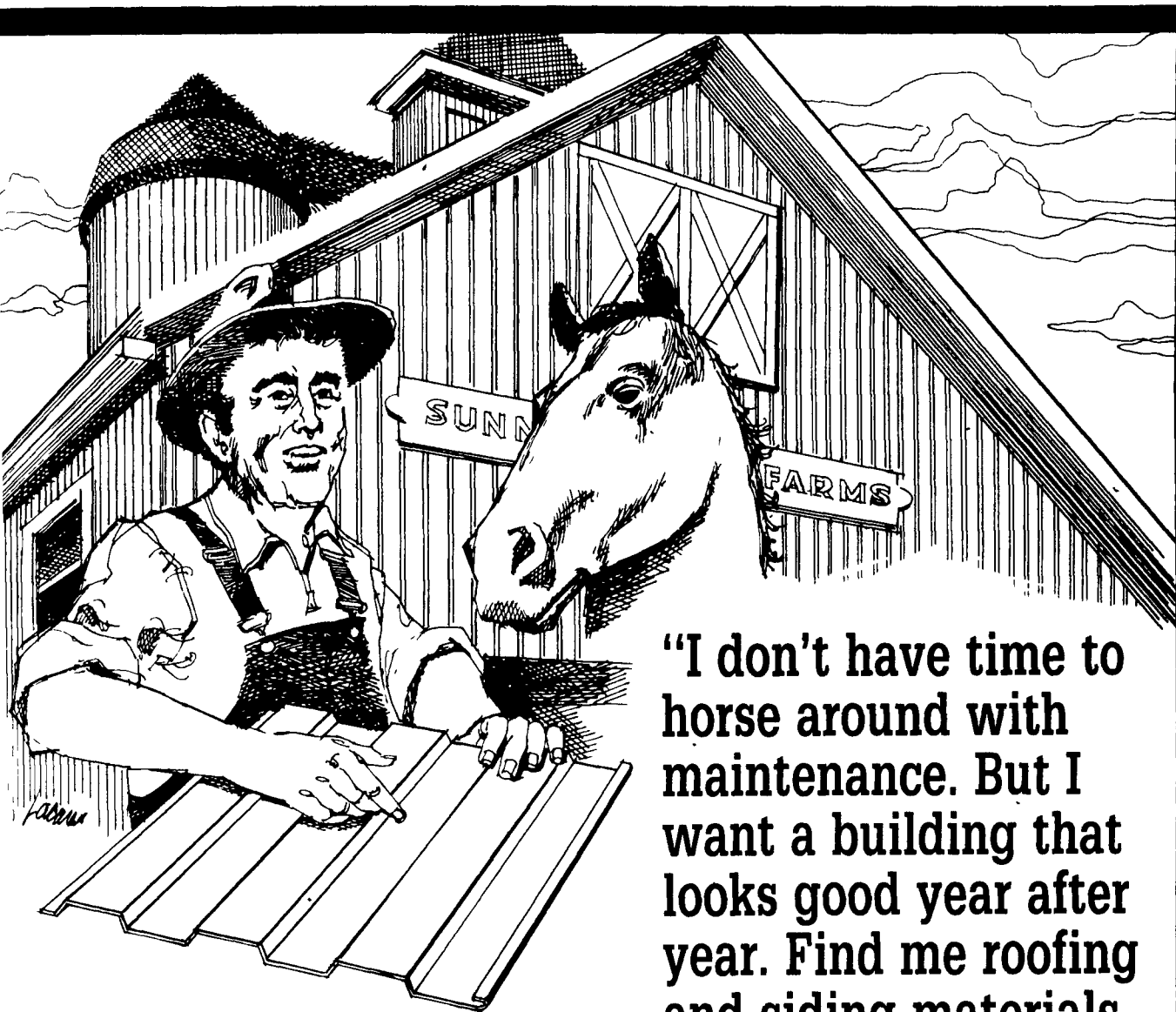
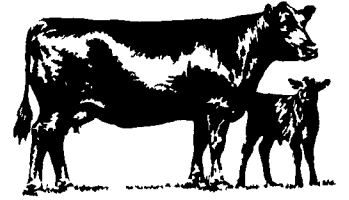
SHEEP 42. High Choice & Prime 45/70 lbs. spring sl. lambs 80.00-90, 85/130 lbs. 75.00-81.00. Slaughter ewes 15.00-21.00.

GOATS 36. Medium & Large 25.00-45.00, Kids 10.00-22.00 --- all per head.

Peoria Cattle
Peoria, Ill.

Wed., April 27, 1988

CATTLE. 100 TRADING MODERATE ON VERY LIGHT SUPPLY BULK OF RECEIPTS STEERS FOR CME DELIVERY. NOT ENOUGH SALES OF ANY CLASS FOR A FULL MARKET TEST.



"I don't have time to horse around with maintenance. But I want a building that looks good year after year. Find me roofing and siding materials that won't break my back or my budget, I told the builder. All he had to do was show me a Fabral™ panel."

If you're interested in buildings with low maintenance, remarkable durability and good eye appeal, talk to us. Our staff of friendly engineers can provide you with exact recommendations on all your material needs. For free information, call or write to us today.



Corrosion Resistant Materials Co.

P.O. Box 848 Farmingdale, NJ 07727
Call Toll Free 1-800-322-CRMC
or 1-201-938-5500

✓ Check out our **PIC***
Program For '88
* **Payment In Cash** is what our contract growers of Buckwheat enjoy.

✓ The market is guaranteed

✓ The contracted price is guaranteed

✓ The contracts are awaiting your sign-up.

Growing Buckwheat offers savings in labor, fuel and other inputs since it requires little or no fertilizer, no herbicides or insecticides, it improves the soil and can be planted up to July 10. Contact us now before acreage requirements are filled.

CLARK'S FEED MILLS, INC.
SHAMOKIN, PA 17872
717-648-4351

CONNEAUTVILLE FARMERS EXCHANGE
CONNEAUTVILLE, PA 16406
814-587-2145

S.F. SCATTERGOOD & COMPANY
P.O. Box 248, NARBERTH, PA 19072
800-362-7817