

35 TRUCKS & TRAILERS

1968 GMC tractor, C O sleeper, 238 Detroit tandem, 10-speed, 10 00x20, 40' flat trailer slider, 4' sides, bows, tarp Will separate, good condition. Cumberland Co., 717-532-4434 after 5pm

1970 Auto car, twin screw, J Brake, 335 Cummins with 30' City aluminum dump trailer, real sharp 717-762-6696

1970 IH Fleetstar 19' heavy flatbed, 549 engine, 5SP trans, 2SP rear, air brakes, new paint, batteries, alternator, new front tires. Asking \$4500 717-263-1341.

1970 White single axle sleeper, 250 Cummins, 10 spd. Road Ranger, \$2,900 OBO. Chester Co Call 215-644-9717

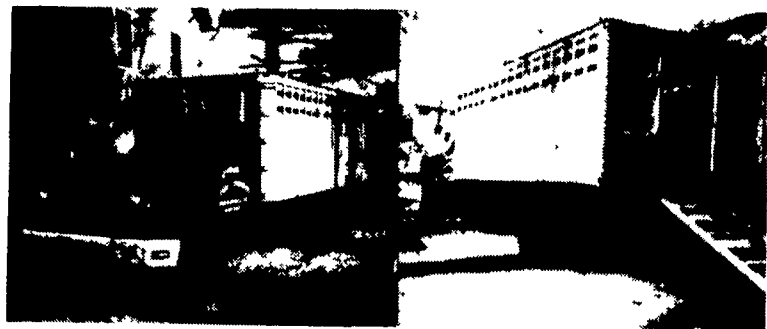
1972 IH Loadstar 1700, 29,500 GVW, 345 engine, 5-speed trans., PS, AM-FM stereo, 18' grain body w/ cattle sides, rubberized tarp, 66,000 original miles, uninspected, \$4,000 301-475-8506, St Marys Co., MD

30' Parker aluminum dump trailer, 32' frame, 11R-24 5 tires, sealed gate. 215-458-8260 after 8 p.m.

'67 Brockway tractor, tandem axle, wetline w/32' single axle flat bed, good shape 215-347-2309 after 8 p.m.

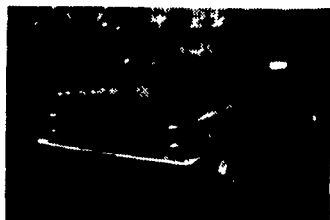


**45' Wilson Stock Trailer
Excellent Condition
716-293-3730**



**C-65 = 5 & 2 = PS
366 Engine, 18 ft. Eby cattle & grain body,
Excellent
\$7,500
301-898-7426**

USED TRUCKS



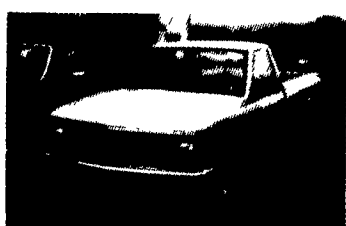
'85 Chev, 1/2 Ton 4x4, Scottdale V8, Auto, PS, PB, AC, Cruise, PW, PL, AM-FM, Rear Sliding Window, Two-Tone Blue-Silver, 10,000 Miles
\$10,900



'86 Ford F-150, V8, Auto, PS, PB, AM-FM, 22,000 Miles
\$8,200



'83 Ford F-250, Heavy Duty, XLT, 460, Auto, PS, PB, AC, Tilt Wheel, Cruise, Dual Fuel Tank, Rear Sliding Window, 35,000 Miles.
\$8,900



'88 Chev. 1/2 Ton, V8, Auto, PS, PB, AM & FM, 3,000 Miles
\$11,700

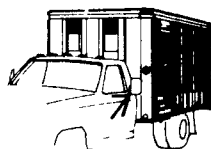
MARTIN'S AUTO SALES

725 E. Main St., New Holland, PA 17557
(717) 354-9967

- 75 Chevy C-70 rollback, 6V53 Detroit engine, 5-speed trans., 2-speed rear, air brakes, power steering \$9500
- 77 IH Loadstar 1700, 446 engine, 5-speed trans., 2-speed rear, power steering..... \$2500
- 80 Chevy C-30, 1 ton stake body dump truck, new rebuilt 350 engine, 4-speed trans., power steering & power brakes \$6550
- 81 Chevy Luv pickup \$2195
- 86 Ford F-350 stake body, 460 4-speed, power steering & power brakes, all new tires, 7.50-16 \$11,500

**REAZER'S AUTO SALES
717-273-7474**

USED EBY ALUMINUM LIVESTOCK BODIES SALE



- 30' Eby Aluminum 7'2" Height, Set-Up To Double Deck
- 22' Wilson Aluminum 6'6" Height

M.H. EBY, INC.
PO Box 127
Blue Ball, PA
17506
(717) 354-4971

'86 Ford pickup F250, 4x4, HD, 351HO, automatic, 12,000 miles \$10,900 717-733-8985

'86 Toyota pickup, 4x4, low mileage, 5SP, like new condition \$6500. 215-589-5489

1962 B-67 Mack 18' dump, very good condition. Cumberland Co., NJ 609-451-6543

1962 Ford F600 dump truck, 21000 gross weight. Call after 7PM North'd 717-648-6069.

FEED TRUCK

1970 IH with Walinga 16' dump & blower
717-653-8572
OR
717-665-7264

77 CHEVY C-65

Looks and runs good, 88,000 miles, new 10.00x20 tires, new inspection, air brakes, 30,000 lb. GVW, 21' wheel base.

215-445-6019

1981 GMC GENERAL TRACTOR

435DD, 13 Speed, Rayco Suspension, 11x24.5 Tires, 212 WB, Sleeper

**NORMAN D. CLARK & SON
717-734-3682**

RINGO HILL FARMS

Rt. 212, Pleasant Valley, Pa. 18951 **215-346-7340**

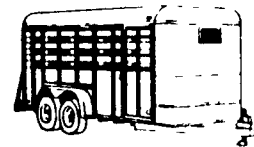
**hours:
8-5 Pm
Mon. - Sat.**

THE "SPECIALISTS" IN Farm Equipment Landscape Equipment

Utility Trailers

- FROM \$498
- FROM \$1500
- FROM \$1500

Horse Trailers



Trailer Accessories, Hitches & Installation Available

Truck Beds
Diamond plate steel
Dump Bodies

TRUCK & TRACTOR CHAINS IN STOCK

CALL OR WRITE FOR OUR CATALOG

dealerships available

MEYERS SNOW EQUIPMENT IN STOCK

- SNOW PLOWS**
8 Ft Power Angle, Lights & Controls \$1800
Installation \$200
- SALT SPREADERS**
Tail Gate Hopper 600# \$1000
Bed Hopper w/Auger 1/4 Yard \$2500

- Snow & Grader Blades**
Size
5 Ft \$195*
6 Ft \$220*
7 Ft \$240*
8 Ft \$350*

CHRISTMAS TREE PLANTER
Heavy Duty Commercial Unit Automatically
Plants 1000 Trees Per Hour 3 or 18
Price Adjustable Spacing 2 Ft to 12 Ft
Now in Stock **\$1,850**

- Commercial Mowers
- Finish Estate Mowers
- Landscape Rakes
- Scarifying Box Blades
- Post Hole Digger
- Root & Stump Cutter
- Dump & Carry
- Carry-All Scraper
- Rock Picker
- Gill Pulverizer
- Chipper
- Sprayers

Log Splitter

8 HP industrial engine
17 ton two stage hyd
5 gal hyd reservoir
highway tires 2 ball hit h
\$900



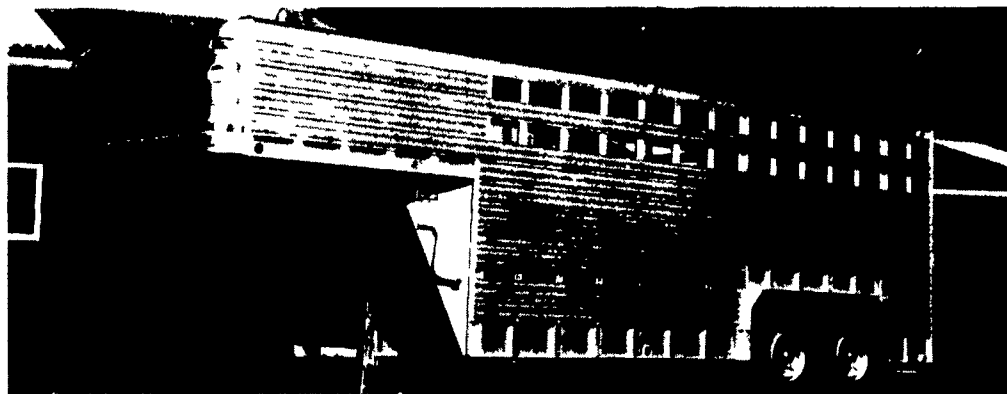
Brush Hog Rotary Mowers

- Trailer Type
- 4 Ft \$450
- 5 Ft \$550
- 5 1/2 Ft \$600
- 6 Ft \$700
- 7 Ft \$1600
- 6 Ft \$850

- Bale Loader Carry All
- Furest Flexible Tine Harrow
- 3 Point Cement Mixer
- Lift Type Disc Harrow
- Bale Chopper
- Sickle Mowers
- Rototillers
- Sweepers
- Hay Rake
- Buck Saw
- Tedder
- Plow
- Fertilizer Spreader and Seeder



ALUMINUM GOOSENECK TRAILERS



20' Gooseneck Trailer

A versatile, lightweight, Eby aluminum stock trailer is built to provide years of maintenance free service. An Eby trailer is custom built to fit your individual hauling needs - No mass production! We use only quality components and strong alloy aluminum to manufacture what may be the last trailer you'll ever buy.

- **LIGHTWEIGHT** - Eby stock trailers are 25-35% lighter than comparable steel trailers. Less weight means better fuel mileage or increased payload.
- **MAINTENANCE** - Eby aluminum trailers won't rust. Welding and painting can cost you dollars in down time and repairs.
- **DURABILITY** - Eby trailers are built tough. Quality components and 6061 alloy aluminum provide the ruggedness required in a livestock trailer.

M.H. EBY, INC.

Box 127, Blue Ball, PA 17506

717-354-4971