

35 TRUCKS & TRAILERS

68 Ford Dump truck, 30,000 gross, very good condition 1983 10-ton construction trailer, good condition 215-693-6246

'74 Ford LN700, 20' flat bed, 361, 5x2, PS, 23,000 GVW, \$3,500 Juniata Co., 717-694-3095

'77 Chevy 4WD, 1/2 ton, 400 4 spd, no rust or damage, good tires, paint, 75,000 miles, \$2,500 York Co 717-993-6393 Evenings

'77 Chevy Scottsdale 1/2 ton pickup, 350 V8, automatic, PS, PB, running boards, cap, very good mechanical condition \$1800 OBO 215-298-2529

'79 El Camino SS 305 V8, air, cruise, tilt, 45,000 mis, one owner, like new \$4250 814-793-2339

'79 Ford F250 XLT Lanat, super cab, 4x4, 400 auto, PB, PS, air, AM-FM, lock out hubs w/fiberglass topper, high miles, good condition, \$4,200 717-733-2873

'81 Ford pickup truck w/ cap, F150 6 cylinder, auto, PS, PB, 2 tone, good condition, \$4,300 717-354-6997 after 5 p m

'85 Chevy C20, 1/2 ton, 305 4 spd, PS, PB, AM-FM, 51,000 miles, excellent condition, blue, \$7,200 717-733-2873

'85 Chevy C30 dual whl w/12' Reading stake body, 350 auto, PB, PS, dual tanks, AM-FM, 28,000 miles, excellent condition, \$10,500 717-733-2873

'86 Chevy Beauville window van, 5 passenger, 350 auto, PB, PS, PW, PDL, cruise, tilt, air, AM-FM, 9,000 miles, like new, \$11,900 717-733-2873

'86 Chevy C20, 1/2 ton, 305 auto, PB, PS, AM-FM, 7,200 GVW, new radials, excellent condition, \$7,950 717-733-2873

'86 Chevy C10 1/2 ton, 305 auto, PB, PS, AM-FM, 35,000 miles, dark blue, excellent condition, \$7,600 717-733-2873

'86 Chevy C30 dual whl w/8' Heil dump body, 350 4 spd, -PS, PB w/utility boxes, 9,000 miles, excellent condition, \$13,900 717-733-2873

'86 Chevy HD 1/2 ton pickup, 350 auto, PB, PS, AM-FM, dual tanks, 8,600 GVW, blue & white, excellent condition, \$7,950 717-733-2873

'86 Dodge D350, dual whl, 12' stake body, 360 4 spd, PS, PB, AM-FM, 2,000 original miles, like new, \$11,900 717-733-2873

'86 Ford F150 HD, 1/2 ton, 300 6 cyl, 3 spd overdrive, PS, PB, 6,250 GVW, 11,000 miles, like new, \$7,800 717-733-2873

1980, 350 Ford chassis w/12' van box \$5,000 717-925-6939

1983, 45' Barrett livestock trailer, good condition, new brakes, good tires \$16,000 717-768-7015

1985 22' steel roll back dump 6 1/2' removable sides \$6,000 OBO 717-549-6711

1972 1510 Int chassis, 4 speed, power steering, 9,000 miles on overhauled engine Call 717-668-5215 evenings

'87 Ford Ranger pickup, V6, FI, 5SP, 15000 miles \$6495 717-733-8985

'87 Chevy pickup, 1/2 ton, 350 V8, FI, HD, 4SP, 20,000 miles \$7500 717-733-8985

'87 Chevy S10, extended cab, V6, automatic, 9,000 miles \$7495 717-733-8985

Lancaster Farming, Saturday, April 23, 1988-B39

1963 Mack B61 tow truck, 20 ton winch, 673 engine, duplex transmission, single axle. Make offer 717-324-2231 or 717-324-2502

1963 Penco 2 compartment tank trailer, 4,400 gal capacity Ideal for fertilizer storage Not inspected Make offer Montgomery Co., 215-723-3764

For Sale Transfer Trailers, all sizes, Demolition Dumps, Used trucks, dumps, grain dumps, roll-backs & log trailers Keith walking floors, sold & serviced 814-623-9696 or 814-623-8696

14' Van box w/dump & feed blower, good condition, \$3,000/B O 215-255-4311

16' Hillsboro gooseneck trailer \$3,000 Please leave message 215-436-5067

'88 Ford F250 XLT Lanat, 351 EFI, 5 spd, PS, PB, air, cruise, tilt, AM-FM stereo, dual tanks, towing package, 8,600 GVW, 4,000 miles w/balance of factory warranty, charcoal & silver, like new, \$13,500 717-733-2873

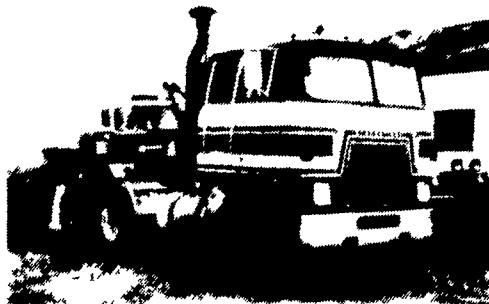
9000 Ford Loueville, 10 wheeler, 13 spd, hi low hole, 350 Cummins, excellent shape 717-582-2543

Custom Built Truck Bodies

Steel & aluminum, hoist installation, sales & service, frame lengthening & straightening.

Wayne's Welding Service

Worton, MD 21678
Business 301-778-6646
Home 301-778-1373



1975 International Transtar App. 60,000 mi. on out of chase overhaul, 600 mi. on trans. & clutch, 13 speed, wet line, good condition & ready to work.

\$8,900 or Best Offer
Ph. 717-656-2904

LIVESTOCK TRAILERS

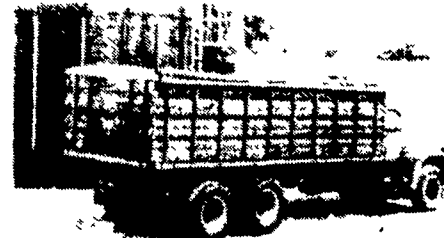
	Was	NOW
• Feather-Lite 7'x20' Aluminum Gooseneck	\$8800	\$7,995
• Kiefer 7'x20' Deluxe Painted Gooseneck - Charcoal	\$6848	\$5,995
• Kiefer 12' Renegade Horse Combination - Copper Metallic	\$3575	\$2,995
• Elegant American Eagle Deluxe, 2 Horse - Silver Metallic	\$5475	\$4,600
• Kiefer Renegade, 3 Horse, Slant Load, w/Dressing Room - Red	\$5275	\$4,400
• Used 7'x20' Hillsboro Gooseneck - Red	\$3795	\$3,400

MORITZ BUMPER PULLS

• 6x12', Red, 2 Slat	\$2,580
• 6'x16', Brown, 3 Slat	\$2,950
• 6'x16', Blue, 1 Slat	\$3,075
• 6'x16', Grey, 2 Slat	\$3,035
• 7'x16', Blue, 3 Slat	\$3,495
• 6'x16' Gooseneck, 2 Slat	\$3,880

 **Hostetler Truck Bodies & Trailers**
Rt. 322 Milroy, PA 17063
717-667-3921

KNAPHEIDE FARM BODIES GRAIN AND LIVESTOCK



- Full 96" wide platform, side heights to 64" for increased grain hauling capacity.
- Choice of tongue and groove, 2" nominal, penta-treated No.1 grade wood floor... or rugged 3/16" thick smooth or treadplate steel floors.
- Wide selection of endgates available for livestock, grain, or seed hauling applications.

 **Hostetler Truck Bodies & Trailers**
Rt. 322 Milroy, PA 17063
717-667-3921

NEW HOLLAND TRUCK HEADQUARTERS

More Than 30 Used Trucks In Stock

CALL US TOLL FREE 1-800-642-8605

WE'LL SERVICE YOUR TRUCK WHILE YOU'RE AT THE SALE BARN. CALL TOM AT: (717) 354-4901

AUTHORIZED CATERPILLAR & CUMMINS SERVICE & PARTS DEALER

Prices & Payments Include Ford Rebates Of \$500.00 If Applicable. All Payments Include 2000 Down Cash Or Trade, 11.5% APR 60 Mo. Tax & Tags Additional. Prior Sales Excluded.

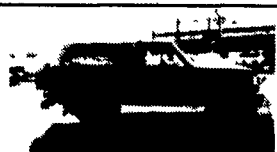


1988 FORD RANGER 4x4

4 cyl., 5 sp. trans., overdrive, PS, PB, AM-FM stereo, cassette clock, XLT trim, RWL radial tires, cloth split bench seat, tachometer, sliding rear window, headliner, deluxe wheel trim, low mount mirrors, chrome rear step bumper.

\$10,397
or \$184.66

ST 1700



1988 FORD BRONCO II 4x4

Station wagon, V6, 5 speed trans., overdrive, PS, PB, AM-FM stereo cassette, clock, light group, deluxe wheel trim, RWL all season radials, luggage rack, spare tire carrier, XL trim, cloth seats, low mount mirrors, deep dish cast aluminum wheels, deluxe tutone paint.

\$12,832
or \$238.21

ST 1793



1988 ISUZU CAB & CHASSIS

PS, PB, 4 cyl. turbo, 5 sp. trans., 33 gal. fuel tank, tilt steering, radial tires, three man seating, exhaust brake, 13,250 GVW.

\$14,903
or \$327.74

ST 3051



1988 FORD F150 4x2

Pickup, 6 cyl., 5 sp. trans., overdrive, PS, PB, AM-FM stereo, all season radials, chrome grille, convenience group, aux. fuel tank, handling package, headliner, insulation package, low mount swingaway mirrors, tach., sport wheel covers, sliding rear window, tinted glass, argent rear step bumper.

\$9,217
or \$158.71

ST 1882



1988 FORD F150 4x4

Pickup, 6 cyl., 4 sp. trans., PS, PB, AM-FM stereo, chrome grille, convenience group, aux. fuel tank, handling package, headliner & insulation package, low mount mirrors, tach., sport wheel covers, sliding rear window, tinted glass, all season radials.

\$10,936
or \$196.52

ST 1944



1988 RANGER 4x2

Pickup, 4 cyl., 5 sp. trans., overdrive, PS, PB, AM-FM stereo, cassette, clock, XLT trim, RWL all season radials, chrome rear step bumper, tach., deluxe tutone paint, sliding rear window, headliner, deluxe wheel trim, low mount swing away mirrors, clear coat paint 60/40, split bench seat.

\$8,262
or \$137.71

ST 1869

NEW HOLLAND



ROUTE 23 NEW HOLLAND PA • SALES (717) 354-4901 TOLL FREE 1 800 642 8605 PARTS HOTLINE 1 800 367 3232
HOURS: MONDAY THRU FRIDAY 8am 9pm SATURDAY 9am 5pm