

THE OLD FARMER'S ALMANAC

April 25-May 1, 1988
Take chances at Maypole dances.

Singer Ella Fitzgerald born April 25, 1918 Accident at Chernobyl nuclear plant April 26, 1987 Tanzania formed April 26, 1964 when Zanzibar and Tanganyika united as a single republic The *Bounty* taken over by Fletcher Christian and crew April 28, 1789 Zipper patented by Gideon Sandback April 29, 1913 Average length of days for the week 13 hours, 56 minutes Full moon May 1 (Sun) Nature is conquered by obeying her



Ask the Old Farmer: When I was a little girl I would sometimes show a new dress to my father and he would tell me I looked very "squee" What does it mean? C M, Normal, Ill
"Squee" is short for "squeezy" — inspiring a hug or a squeeze

Home Hints If zipper teeth are broken near the bottom of the zipper, sew over the broken part and make the zipper shorter.

OLD FARMER'S WEATHER FORECAST

New England: Week begins with showers, some sun, midweek rain, snow mountains, end of week rain continues, heavy north
Greater New York-New Jersey: Beginning of week clear with seasonably cool temperatures, rainstorm midweek, warm, end of week cloudy and cool
Middle Atlantic Coastal: Beginning of week sunny and mild, possible showers, midweek rainstorm, end of week cold wave, showers
Piedmont & Southeast Coastal: Beginning of week sunny and warm, midweek rain, heavy west and south, end of week clear and warm

(All Rights Reserved, Yankee Publishing Incorporated Dublin, NH 03444)

Leesport Livestock Auction

Leesport, Pa.

Wed., April 20, 1988

CATTLE 302...PDA... Supply included 55 head feeder cattle. Compared to last Wednesday's market: Slaughter steers

steady to strong, spots \$1 higher; Cows \$1 to \$2 higher. Choice 1000/1450 lbs. sl. steers 70.25-73, one 73.75, few yield grade 4-5, 1100/1215 lbs. 67.85-69.85, Select 64.85-69.50, Select & Choice 1200/1650 lbs. holsteins 63.75-69.75, one 70.75, few Standard 56-64.50. Choice 920/1350 lbs. sl. heifers 64.75-67.75, few 72.50, few

Select 60-63.75, few Standard 52.50-59.50. Breaking Utility & Commercial sl. cows 51.00-55, few 56.00, Cutter & Bon. Utility 49-55.50, Canner & Low Cutter 46.25-51.75, few 54.00, Shells down to 39.50. Few Select sl. bullocks 63.75-68.75, few Standard 58.75-61.75, few Select & Choice holsteins 1300/1500 lbs. 61.25-64.25. Few Yield Grade No. 1, 1430/1740 lbs. sl. bulls 61.00-65.75. Feeder Cattle: Medium Frame No. 1, 450/475 lbs. steers 87.00-89, few 1-2, 700/745 lbs. 65-66.50, few Large #2, 875/900 lbs. 60.00-65.00. Medium & Large Frame No. 1, 460/525 lbs. heifers 66.00-67, few 600/730 lbs. 60.50-65.25. Medium Frame No. 1-2, 400/500 lbs. bulls 80.00-92.00, few Large #2, 685/775 lbs. 54.00-64.50.

CALVES 135...Vealers steady to strong. Few Choice vealers 107.00-120, few Good 85.00-107, Standard and Good 80/105 lbs. 85.00-95, few 70/80 lbs. 75.00-82, Utility 60/85 lbs. 65.00-75.00. Farm Calves: Holstein Bulls 90/130 lbs. 130.00-154, some down to 96.00, few 70/90 lbs. 84.00-100; few Hol. Heifers 100/140 lbs. 100.00-137.50. Few Beef Cross Bulls & Heifers 65/75 lbs. 79.00-105.00. Few Good & Choice 325/450 lbs. slaughter calves 76.00-94.00.

HOGS 451...Barrows and Gilts steady .50 to \$1 lower. US No. 1-2 220/245 lbs. 42.00-43, (32 head 43.75-44.50), 1-3 210/250 lbs. 40.50-42, 2-3 230/285 lbs. 39.00-41, 2-4 260/300 lbs. 35.25-38, one lot 305 lbs. 34.50. Sows \$1 to \$2 lower. US No. 1-3 300/580 lbs. sows 30.00-34, couple 40.00, few Medium 290/470 lbs. 20.00-30.00. Boars 30.00-31.50, light weights 34.50-35.00.

FEEDER PIGS 272...One Lot US No. 1-3 15 lbs. feeder pigs 32.00 per head; 20/35 lbs. 117.50-152.50, 35/45 lbs. 91.00-104, 50/60 lbs. 80.00-83, few 75/80 lbs. 62.00-70, few Utility 30/90 lbs. 45.00-50.00 --- per hundredweight.

SHEEP 40...Choice 25/50 lbs. spring sl. lambs 120.00-137.50, few 50/55 lbs. 97.50-115, few Good & Choice 65/130 lbs. 70.00-72.00. Slaughter sheep 28.00-37, few to 40.00.

GOATS 24...Large 58.00-73, few Medium 36.00-51, Kids 20.00-28.00 --- all per head.

Greencastle Livestock

Greencastle, Pa.

Monday, April 18, 1988

CATTLE 549. SLAUGHTER STEERS - CHOICE & PRIME 67.00-73.00, FEW TO 73.85, GOOD & CHOICE 64.00-70.00; GOOD & CHOICE - HOLSTEIN 59.50-66.00; STANDARD & GOOD - HOLSTEIN 55.00-60.50. SLAUGHTER HEIFERS - CHOICE 65.00-70.00; GOOD & CHOICE 63.50-68.85; STANDARD & GOOD 57.00-64.00. COWS - UTILITY & COMMERCIAL 48.50-54.00, FEW TO 56.00; CUTTER & BONING UTILITY 46.00-52.50, FEW TO 55.50; CANNER & LOW CUTTER 46.50 & DOWN. BULLS - ALL WEIGHTS - YIELD GRADE 1 59.00-65.75; YIELD GRADE 2 53.00-59.50. STOCKER CATTLE - ALL WEIGHTS - STEERS - MEDIUM & GOOD 70.00-95.50; HEIFERS - MEDIUM & GOOD 62.00-72.50; BULLS - MEDIUM & GOOD 57.00-69.00; STEERS - HOLSTEIN 56.00-74.00.

CALVES 402. GOOD & CHOICE 125-250 LBS. 100.00-114.00; MEDIUM & GOOD 125-250 LBS. 85.00-102.00; MEDIUM & GOOD 80-120 LBS. 88.00-100.00; LIGHT & CULL - ALL WEIGHTS 90.00 & DOWN; HOLSTEIN BULLS - RETURN TO FARM UP TO 154.00; HOLSTEIN HEIFERS - RETURN TO FARM UP TO 162.00.

LAMBS, SHEEP & GOATS 57. CHOICE LAMBS 78.00-85.00; MEDIUM & GOOD LAMBS NONE; LIGHT LAMBS 80.00-90.00; SHEEP, EWES & BUCKS 22.00-32.00; GOATS - ALL SIZES (BY HEAD) 18.00-62.00.

HOGS 281. NO. 1-3 BUTCHER HOGS - 190-225 LBS. 37.00-41.00; NO. 1-3 BUTCHER HOGS - 225-250 LBS. 40.00-42.00, NO. 1-3 BUTCHER HOGS - 250-300 LBS. 36.00-40.00; GOOD BUTCHER SOWS - 400 LBS. DOWN 32.00-36.50; GOOD BUTCHER SOWS - 400 LBS. UP 32.50-36.50; HEAVY BOARS - OVER 300 LBS. 27.00-28.25, LIGHT 28.00-32.00; PIGS - ALL SIZES (BY HEAD) 22.00-44.00.

SALE EVERY MONDAY AFTER-

NOON AT 3:30 P.M. & THURS. AT 1:00 P.M.

HAY & STRAW SALE EVERY MONDAY & THURS. AT 11:30 A.M.

PIG SALE SAT., APRIL 23- 1:00 P.M., FEEDER CATTLE SALE MAY 6- 7:15 P.M.

16 LOADS.
PER TON: ALFALFA 90.00-126.00
TIMOTHY 50.00-70.00; MIXED 50.00-96.00; STRAW 40.00-55.00

Grantsville Livestock

Grantsville, Maryland

Saturday, April 16, 1988

HOGS: TOP BARROWS & GILTS 40.50-42.00; HEAVY BUTCHER 38.00-41.50; LIGHT BUTCHER 35.00-40.00; BUTCHER SOWS 28.00-33.00; FEEDER SHOATS 20.00-59.00.

VEAL: GOOD 92.00-118.00; STANDARD 80.00-90.00; UTILITY 55.00-75.00; BULL CALVES 1.00-1.45
SHEEP & LAMBS: GOOD 85.00-90.50; UTILITY 70.00-80.00; SLAUGHTER EWES 22.00-30.00.

SLAUGHTER CATTLE: STEERS: GOOD 68.00-71.00; STANDARD 62.00-65.00; UTILITY 58.00-60.00.

HEIFERS: GOOD 65.00-67.50; STANDARD 62.00-63.00; UTILITY 52.00-58.00.

COWS: COMMERCIAL 49.00-53.50; UTILITY 46.00-47.00; CANNER & CUTTER 40.00-45.00.

BULLS: COMMERCIAL & GOOD 56.00-63.50; CUTTER & UTILITY 50.00-54.00.

STOCK-FEEDER CATTLE: GOOD 75.00-80.00; MEDIUM 62.00-70.00.

STEER CALVES: GOOD 85.00-96.50; MEDIUM 65.00-80.00.

HEIFER CALVES: GOOD 78.00-89.00; MEDIUM 60.00-75.00.

HAY & STRAW AUCTION EVERY THURSDAY AT 1 PM VINTAGE SALES STABLES, INC.
10 miles East of Lancaster on Rt. 30, Paradise, PA
717-442-4181 or 768-8204
L. Robert Frame, Mgr.

HAY & STRAW SALE 12:00 Noon Every Wednesday
Westend of Avondale at the intersection of Baltimore Pike and Route 41.
Harvey Z. Martin
215-268-3604 (Office)
215-445-5303 (Residence)

SPECIAL AUCTION

STOCKERS AND FEEDERS

FRIDAY, MAY 6, 1988
7 p.m.

At Vintages Sales Stables Inc., Paradise, PA 17562.

L. Robert Frame, Manager
Home 215-458-5060
Office 717-442-4181
717-768-8204

Green Dragon Livestock Sales

Location: Ephrata RD 4. 1 mile N. on North State St., Ephrata.



COWS COWS COWS SALE EVERY FRIDAY

Lots of good Northern Feeder & Stockers. Slaughter Cows - Bull Steer, Veal-lamb.

11:00 A.M.-Beef Sale 200-300 each week.
1:00 P.M.-Dairy Sale.
7:00 P.M.-Small Animal Sale.

For Special Sales and Herd Dispersals on farm or at our barn or other market information call: Office 717-733-2444, Home 717-838-4318.

WALTER H. RISSER, Proprietor
All out of state and new buyers must have cash or certified check or current letter of credit from bank.

MELHORN SALES, SERVICE, TRUCKING CO.

1010 W. Main St., Mount Joy, PA 17552

MOVING PULLETS?

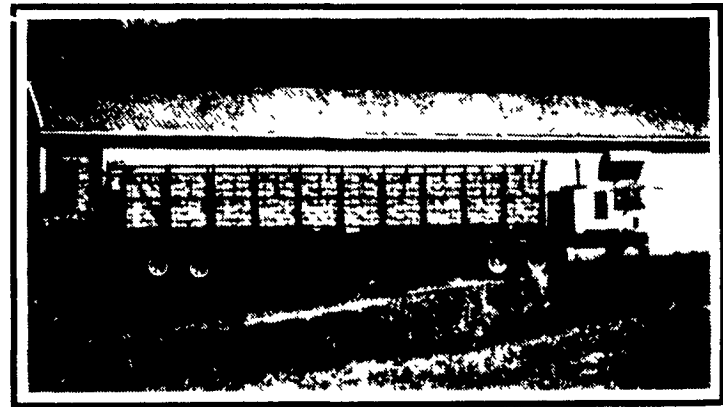


LOADING FOWL?

Call on Wendy...

for fast, efficient service.

- Clean, Modern Equipment
- Fulltime Professional Crews
- Quality Work



The only full service company, in this area, to handle the total needs of poultrymen.

For More Information Phone:

717-653-1102

Monday - Friday 8:30 AM - 4:00 PM

