

Lebanon Valley Livestock Auction

Fredericksburg, Pa.
Mon., April 11, 1988

CATTLE 205..PDA...Compared with last Tuesday's market: Slaughter cows steady, mostly \$1 lower Choice 2-4 1130/1470 lbs. sl. steers 70.25-72.25, few 4-5 64.25-70, Select 62.75-69, Select & Choice 1080/1600 lbs. holsteins 62.00-65, few 66.25, Standard & Low Select 57.25-61.75, one Utility 50.50. Few Choice sl. heifers 63.25-67, two holsteins 58&61.25, few Select 58.75-61.75, few Stanard 54.00-60, two Utility 49.25&50.75. Breaking Utility & Commercial sl. cows 50.00-53, few 54.25, Cutter & Boning Utility 46.50-51, few 52.50, Canner & Low Cutter 44.25-48.75, Shells down to 39.25. One Select sl. bullock 64.25, few Standard & low Select 59-63.75. One Yield Grade No. 2, 1640 lbs. sl. bulls 57.75. Feeder Cattle: Few Large Frame No. 2, 540/825 lbs. bulls 55.50-60.00

CALVES 164...Vealers uneven. One Choice vealer 111.00, two slaughter calves 90 00&99; Standard and Good 80/100 lbs 80.00-94.00, few Utility 50/85 lbs 44.00-73 00 Farm Calves: Holstein Bulls 90/135 lbs. 114 00-140, few 85/95 lbs 92 00-104 00, Holstein heifers 90/125 lbs 92 00-156 00 Beef cross bulls & heifers 75/115 lbs 83 00-111 00

HOGS 114 Two Lots US No 1-2 220/245 lbs barrows and gilts 41 10&41 35, 1-3 230/245 lbs 40 25-41 25, few 2-3 235/255 lbs 38 85-39, lot 2-4 240 lbs 37 50, few 1-3 125/145 lbs. 36 00-39 00 US No 1-3 315/495 lbs sows 30 00-33, few 500/590 lbs. 34 00-34 75, two 2-3 605/675 lbs 32 00. Few Boars 26 00-29 00

FEEDER PIGS 8 ..Lot US No 1-3 28 lbs. feeder pigs 75.00, lot 51 lbs 75 00 --- all per hundredweight

SHEEP 7 ..Few High Choice & Prime 50/65 lbs. spring sl. lambs 91 00-95 00 Few Slaughter sheep 18 00-23.00.

GOATS 0 No Market Test

Mercer Livestock Auction

Mercer, Pa.
Tues., April 12, 1988

CATTLE 397..PDA...Compared with last Tuesday's market: Slaughter steers .50 to mostly \$1 lower; Cows steady. High Choice sl. steer, one 75.00, Choice 67.00-73, fer high dressing 74.75, Select 64.50-67.50, Standard 57.00-65, few Utility 48.50-51.00. Choice sl. heifers 66.00-69.30, Select 63.00-66, Standard 54.00-62, Utility 49.00-53.50. Breaking Utility & Commercial sl. cows 49 00-53, Cutter & Boning Utility 46.75-50 50, Can-

ner & Low Cutter 39.00-47, Shells down to 29.00. Yield Grade No. 1, 1200/1820 lbs. sl. bulls 56.00-63.75, few No. 2, 850/1200 lbs 51-54.30. Feeder Cattle: Medium & Large Frame No. 1, 400/600 lbs. steers 70 00-84.00, Medium #2 800/950 lbs 53.00-56, Large No 2, 350/375 lbs. 80 00-82 00. Medium & Large Frame #1, 500/700 lbs. heifers 60.00-74, Medium #2 400/550 lbs. 60.00-67.00. Medium Frame No 1, 500/650 lbs. bulls 64.00-70 00.

CALVES 94...Few Good vealers 84.00-90, Standard and Good 90/120 lbs. 73 00-86, 60/85 lbs. 62.00-75, few Utility 45/60 lbs. 33.00-45.00. Farm Calves: Holstein Bulls 90/125 lbs. 100.00-159.00, Hol. Heifers 90/120 lbs. 95 00-135 00 Few Beef cross bulls and heifers 80/105 lbs. 80.00-125 00.

HOGS 165...Barrows and gilts mostly steady. US No. 1-2 220/255 lbs

42.35-43.10, 1-3 220/250 lbs. 41.60-42.25, one lot 1-3 185 lbs. 39.00. Few US No. 1-3 350/550 lbs. sows 34.00-36.00.

FEEDER PIGS 4...Few US No. 1-3 25 lbs. feeder pigs 26.00 --- per head.

SHEEP 9...Slaughter sheep 20 00-27.00. **GOATS 0**..No Market Test.

Eighty-Four Livestock Auction

Eighty-Four, PA
Mon., April 11, 1988

CATTLE 393..PDA...Compared with last week's market: Slaughter cows weak to Utility 52.00-56.00. Few Choice sl. heifers 65-66.50, few Select 60.00-64, Standard 52.00-58.00. Breaking Utility & Commercial sl. cows 49.00-53, one 55.50, Cutter & Bon. Utility 46.50-51, Canner & Low Cutter 40.00-47, Shells down to 30.00. Couple Choice sl. bullocks 64&64.50. Yield Grade No. 1, 1200/1960 lbs. sl. bulls 59.00-63,

few No. 2, 1100/1400 lbs. 50-53.00. Feeder Cattle: Medium & Large Frame No. 1, 250/500 lbs. steers 74.00-90, few 250/300 lbs. up to 115.00, 600/800 lbs. 62.00-74.00. Medium Frame No. 1, 300/500 lbs. heifers 66.00-80, few 260/280 lbs. up to 90.00. Medium & Large Frame No. 1, 350/500 lbs. bulls 70.00-85.00.

CALVES 228...Few Choice vealers 112.00-125, Good 93.00-110, Standard and Good 90/120 lbs. 75.00-85, 60/85 lbs. 70.00-79, Utility 45/70 lbs. 43.00-60.00. Farm Calves: Holstein bulls 90/125 lbs. 100.00-152.50; Holstein Heifers 85/120 lbs. 98.00-175.00. Few Beef cross bulls & heifers 80/110 lbs. 85.00-140.00.

HOGS 176...Barrows and gilts \$1 to \$1.50 lower. US No. 1-3 203/250 lbs. 40.00-40.90, 2-3 209/260 lbs. 38-39.50, lot 1-3 199 lbs. 30.00. US No. 2-3 400/750 lbs. sows 34.00-36, 2-3 350/600 lbs. 32.00-34.00. Few Boars 26.00-28.00.

FEEDER PIGS 12...Few US No. 1-3 30/35 lbs. feeder pigs 21.00-27.50, few 40/45 lbs. 30.00-35.00 --- all per head.

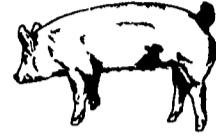
SHEEP 107...High Choice & Prime 50/65 lbs. spring lambs 94.00-100, 80/94 lbs. 85.00-97, small lot 105 lbs. 93.00; 105/113 lbs. shorn lambs 85.00-90.00 Slaughter sheep 20.00-26.50.

GOATS 14...Large 35.00-40.00, Medium 18.00-28.00 --- all per head.

ROPE IN SOME EXTRA CASH!

Advertise With A Lancaster Farming CLASSIFIED AD

Phone 717 394 3047 or 717 626-1164



Poultry and Swine Producers

YOU'RE ALL INVITED
to a

BREAKFAST MEETING
Roger and Grace Moyer of Lititz will answer questions and discuss **COMPUTER CONTROL OF THEIR LAYER OPERATION**

- Ventilation and Environmental Control
- Water and Feed Management
- Egg Counting and Egg Flow Control
- Savings and Payback
- Improved Management

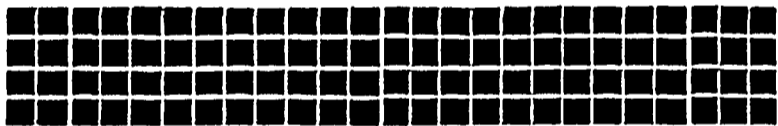
WEDNESDAY, APRIL 20th - 7:00 AM
KREIDER'S Dairy Farm Restaurant

2 Mi. S. of Manheim on Rt. 72 - Talks and Questions will end by 8:30 AM

Sponsored By:

AUTOMATED ENVIRONMENTS, Ithaca, NY & NORTHEAST AGRI SYSTEMS, Lititz, PA

We Don't Want To Waste Any Food Or Not Have It Ready For You, So...
PLEASE CALL AND TELL US YOU ARE COMING 717-569-2702



Hay Pro II™

THE NEXT GENERATION IN HAY PRESERVATION

A High Moisture (20 - 35%) Hay Preservative That **WON'T RUST** equipment or remove paint.

WON'T BURN skin or produce fumes that cause a burning sensation.

WON'T SMELL so bad that no one wants to work on the wagon or in the barn.

We've taken the headaches out of Hay Preservation!

We have reformulated our 80:20 blend of propionic: acetic acid to be people friendly. HayProII™ provides the same preservative value pound for pound as the old 80:20 blend that you may have purchased under one of the following commercial names: Field Fresh™, HayPro™, Protex™, ChemStor™, etc.

With HayProII™, you get the same fantastic results with none of the old problems. This new product is available only under the trade name HayProII™ and only from American Farm Products or its authorized dealers.

DEALER INQUIRIES INVITED



American Farm Products, Inc.
Ypsilanti, Michigan 48197 Call 1-(800)-624-7530

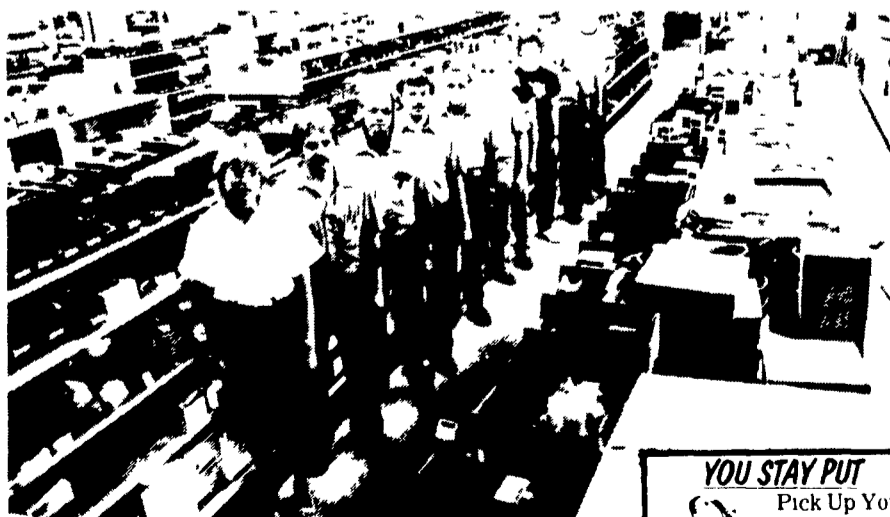
C.B. HOOBER & SON, INC.
Intercourse, PA
(717) 768-8231

HOOBER EQUIPMENT, INC.
Middletown, DE
(302) 378-9555

TWO LOCATIONS
The Saving Place

WE SHIP PARTS DAILY

Via UPS - PPSH - BUS - AIR FREIGHT, ETC.



HOURS

Mon -Fri 7 AM-5 PM; Sat 7 AM-Noon

CALL US...

It Could Be We Have It



Authorized
UPS Station

YOU STAY PUT

Pick Up Your Phone And Place Your Parts Order With Us