

National Grain Market

St. Joseph, Mo.
Tues., April 5, 1988

CASH GRAINS AND SOYBEANS MOSTLY HIGHER. MARKETS STRONG, SUPPORTED BY ACTIVE FUTURE TRADING BASIS LEVELS UNCHANGED TO WEAKER. COUNTRY MOVEMENT MODERATE TO SLOW. CCC REDEMPTIONS OF GENERIC CERTIFICATES REMAIN ACTIVE PROVIDING AN AMPLE SUPPLY FOR SPOT DELIVERIES.

DATE CHANGE YEAR AGO 04/05/88--04/04/88 04/07/87 WHEAT: KANSAS CITY 3.07-3.10 UP 6 2.88-2.92 MINNEAPOLIS 3.13 3/4 UP 5 3 23 1/4 PORTLAND 3 23-3 25 UP 4 2 96-3 01 ST. LOUIS 2 98-3 03 UP 3 2.80-2.86

CORN, U.S. NO. 2 YELLOW: KANSAS CITY 2.01-2.04 DN 1 1.58-1.60 MINNEAPOLIS 1.94 1/2 UP 1 3/4 1.49 1/2 SO IOWA 1 98-2 03 1/2 NC-UP 1 1/2 1 57-1 58 OMAHA 1 85-1 88 UP 2-NC 1 47-1 50

SOYBEANS, NO. 1 YELLOW: KANSAS CITY 6.45-6 52 UP 1 4 99-5 05 MINNEAPOLIS 6 48 3/4 UP 3 4 92 1/2 SO IOWA 6 54-6 59 UP 4 4 98-5 01 C. ILL. PROCESSORS 6 66 6 73 UP 2 4 99 1/2-5 07 1/2

*KANSAS CITY, US NO 1 HARD RED WINTER WHEAT, ORDINARY PROTEIN MINNEAPOLIS, US NO 1 DARK NORTHERN SPRING WHEAT, 14% PROTEIN PORTLAND, NO 2 SOFT WHITE WHEAT, ST. LOUIS, NO 2 SOFT RED WINTER WHEAT FUTURES CLOSE KANSAS CITY (MAY) WHEAT 3 10 UP 6 2 72 3/4 MINNEAPOLIS (MAY) WHEAT 2 96

CHICAGO (MAY) WHEAT 3 06 1/2 UP 6 1/4 2.88 3/4 (MAY) CORN 2.08 1/2 DN 1/4 1 59 1/2 (MAY) SOYBEANS 6.70 3/4 UP 2 5 04 1/2
EXPORT: BARGE OR RAIL, PORT OF NEW ORLEANS OR NORTH TEXAS
GULF. NO. 1 HARD RED WINTER WHEAT ORDINARY PROTEIN 3 42 UP 6 3 08 3/4 NO 2 SOFT RED WINTER WHEAT 3.26-3.32 UP 2-7 3.13 3/4-3.19 NO 2 YELLOW CORN 2 28 NC-DN 1 1.80-1.82 NO. 2 YELLOW SORGHUM 3 77-3 88 DN 2-NC 3 21-3.27 NO 2 YELLOW SOYBEANS 6 86-6 89 UP 1 5.26 3/4-5 30.

Frederick Co. Hay

Buckeystown, Md.
Thursday, April 7, 1988

Report Supplied by Auction
TOTAL LOADS: 19 LDS. RAIN MARKET VERY UNEVEN.
ALFALFA 4 FAIR TO GOOD, 80 00-150 00.
MIXED HAY: 4 LDS., 45.00-62 00
TIMOTHY: 6 FAIR TO GOOD, 50.00-92.00.
STRAW 4 FAIR, 50 00-70 00
LOCUST POSTS: 1.50 EA

Leinbach's Hay

Shippensburg, PA
Apr. 2 & 5

Report supplied by Auction
TOTAL LOADS: 65
ALFALFA: 75 00-145 00.
MIXED HAY: 54.00-139 00
TIMOTHY: 70.00-103 00
CLOVER 77.00-85 00
OATS: 2 21 BU.
EAR CORN: 83 00-92 00
GRASS: 60 00-106 00
STRAW: 40 00-75 00

Belleville Hay

Wednesday, April 6
Belleville, PA

Report Supplied by Auction
TOTAL LOADS: 57 LDS. HAY.
ALFALFA: 65.00-142.50.
MIXED HAY: 35.00-67.50.
EAR CORN: 1 LD., 55.00.
STRAW: 4 LDS, 55.00-77 50

North Jersey Market

Hackettstown, N.J.
Tues., April 5, 1988

Hay—Straw & Grain Report
ALFALFA 1.50 BALE.
MIXED 1.70-2.30 BALE
GRASS 1.70-1.80.
BARLEY STRAW 1 25-1 50
TOTAL 7

New Holland Hay

New Holland, PA
Monday, April 4

Report Supplied by Auction
153 LOADS.
ALFALFA: 52 00-144 00, 1 AT 152 00 & 1 AT 180.00
MIXED HAY 53 00-138 00
TIMOTHY: 66 00-82.00
CLOVER 68 00-75 00
OATS 2 35-2 60 BU
EAR CORN: 72 00-89 00
GRASS 60 00-115 00
STRAW 56 00-113 00

Good's Hay

Leola, Pa.
Wed., April 6, 1988

Report Supplied by Auction
155 LOADS.
ALFALFA 60 00-175 00
MIXED HAY: 62 00-165 00
TIMOTHY 65.00-106 00
CLOVER 59.00-76 00
OATS: 2 25 & 2 45
EAR CORN: 77 00-91 00
GRASS 65 00-85 00
STRAW: 74 00-101 00

Eighty-Four Livestock Auction

Eighty-Four, Pa.
Mon., April 4, 1988

CATTLE 327...PDA...Compared with last week's market: Slaughter cows steady to strong. Few Select sl. steers 64 00-66, few Standard 60.00-64, few Utility 50.00-59 00. Few Select sl. heifers 60.00-64, few Standard 53.00-56.00. Breaking Utility & Commercial sl cows 49.25-54, Cutter & Bon. Utility 46 50-51, Canner & Low Cutter 40.00-47, Shells down to 28 00. Yield Grade No. 1, 1400/1900 lbs sl. bulls 56.00-65, few No. 2, 1200/1650 lbs. 49.50-55.00. Feeder Cattle: Medium & Large Frame No. 1, 270/500 lbs. steers 78 00-96, 600/800 lbs. 65 00-75.00. Medium Frame No. 1, 300/500 lbs. heifers 66.00-80, few 600/700 lbs. 64 00-69 00. Few Medium & Large Frame No 1, 350/500 lbs bulls 75.00-90.00.

CALVES 236...Few Choice vealers 120.00-140, few Good 95 00-115, Standard and Good 90/120 lbs. 78 00-88, 60/85 lbs. 68.00-80, few Utility 50/75 lbs. 45 00-65 00 Farm Calves. Holstein bulls 90/125 lbs. 105 00-156.00, Holstein Heifers 90/120 lbs 100 00-130 00 Beef cross bulls & heifers 85/100 ls 78 00-115 00

HOGS 196 Barrows and gilts 50 to \$1 higher US No 1-2 220/235 lbs 42 70 43 25, 1-3 225/255 lbs 41 00-42 50, 2-3 205/260 lbs 40 50-41 10, 2-4 235/315 lbs 37 10-40.00 US No 2-3 300/650 lbs sows 32 00-36 00 Boars 24 00-29 00

FEEDER PIGS 7...Few US No 1-3 25 lbs feeder pigs 18 50, few 57 lbs 32 00 - per head

SHEEP 155 High Choice & Prime 37/50 lbs spring lambs 115 00-129, 65/75 lbs 110 00-125, 85/97 lbs 92 00-99 00, Good & Choice 60/85 lbs feeder lambs 85 00-92 00 Slaughter sheep 20 00-26 00
GOATS 8 Medium 20 00-30 00 --- all per head



ATTENTION FARMERS

**EVERY MONDAY
HATFIELD PACKING CO. and
MOYER PACKING CO.**
Will Receive Your
Hogs and Cattle at the
DANVILLE LIVESTOCK MARKET
RD 4, Danville, PA

- We will receive your hogs from 8 AM to 12 Noon every Monday. Your hogs will be weighed and paid for immediately.
- We will also accept your sows & boars
- Your cattle will be received from 12:30 to 5 P.M. We will either pay you for your cattle immediately or you may sell them dressed weight.
- There will not be a commission or yardage fee deducted from your check.
- You may call our office Monday morning and we will be able to tell you the base price for hogs for the day

MELVIN M. LEHMAN - Owner
Danville Buying Station
Phone: 717-275-2880

HAY, STRAW & GRAIN SALE!

Every Thursday, 12 Noon
Commission Rate
2% Min. \$4.00;
Max. \$25. No Sale \$4.00
Lunch Served
Everett Kreider,
Auctioneer #007
ROTH SALES
Rt. 472, Kirkwood, PA
717-529-6249

GRAIN & LIVESTOCK HEDGING SERVICES WITH

E.F. Hutton

Jim Rohrbaugh, Account Executive
E.F. Hutton & Company Inc.
P.O. Box 3151, Harrisburg, PA 17105
(717) 763-1611
(800) 822-9553 In-state
(800) 334-3119 Out-of-state

CRIPPLED AND DISABLED

**Cows, Steers & Bulls
For Slaughter Under
USDA Inspection**

Call Wayne Taylor

**717-866-6289
215-286-9400**

**Lebanon, Berks,
Lancaster & Chester
Counties**

PLEASE NOTE!

Change of Location to Home Farm
On Hill Rd. in Heated Shed

**FRIDAY, MAY 6 - 1:00 PM
ON THE FARM MONTHLY**

BRED GILT SALE

Sale To Start Promptly Every 4 Weeks

Located 4 miles east of former location, 1 mile off 472 midway between Quarryville & Oxford, PA, 1 mile south of Kirkwood, turn west off 472 at Union Church (Street Rd.) 1 mile to crossroad turn left, 2nd farm on right. Hill Road. Watch for sale signs.

**Validated Brucellosis
Free Herd #169
Qualified Pseudorabies
Free Herd #55**

50 to 60 Head

We will no longer have White Diamonds, it will be the next generation or F2's crossed to Chester White. Very nice gilts.

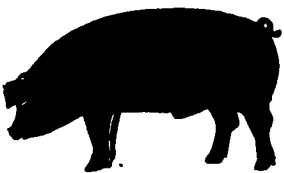
Vaccinated for Lepto, Erysipias, Rhinitis, E'Coil, Pasteueralla

Hand mated with Breeding Dates
Local Truck Available
No Hogs Sold On Commission

JOHN B. STOLTZFUS
R.D. 1, Kirkwood, Pa.
Abe Diffenbach, Auctioneer AU225L
NEXT SALE FRI., JUNE 3, 1:00 P.M.



**GWALTNEY of
SMITHFIELD, LTD.**



RECEIVING HOGS: LANCASTER COUNTY FARMERS

MONDAYS McCoy's Branch Office, Bareville
WEDNESDAYS (Next to Bawells Butcher Shop)
& FRIDAYS on Butler Rd 717-656-9668

TUESDAYS B & R Cattle
THURSDAYS Marietta
717-426-3258

YORK COUNTY FARMERS

MONDAYS: Stewartstown
717-993-2564

TUESDAYS: Thomasville
717-792-2248 or 9836

Contact for information
Ed Herrmann, 717-284-3203
or Charlie Kauffman, 215-593-5674
Future forward contracts available

"NEW HOG MARKET"

Gwaltney is pleased to offer you a new hog market. We will begin purchasing hogs Wednesday, March 16th at the Dewart Sale Barn.

For information contact Ron Myers at 717-656-3291 or Gary Hammer at 1-800-638-8884.

Receiving hogs every Wednesday from 7:30 am to 1:00 pm at the Dewart Sale Barn.



**Be Wise...
Check our
prices before
you buy!!**

SPRAY MATERIALS

- | | | |
|------------------|------------|-------------|
| * ATRAZINE | * BLADEX | * EXTRAZINE |
| * DUAL | * BANVEL | * FURADAN |
| * LASSO | * LOROX | * COUNTER |
| * SUTAZINE | * PARAQUAT | * LORSEAN |
| * ROUND UP | * PRINCEP | * DYFONATE |
| * LASSO-ATRAZINE | | ETC. |

SAVE ON BULK HERBICIDES

- BICEP • LASSO-ATRAZINE • PROWL
• EXTRAZINE • DUAL • BLADEX • LASSO MT

MELVIN R. WEAVER

2213 Leabrook Road, Lancaster, PA 17601
Ph: 717-569-6576 or 898-8354