

# Make Your Move!

## Buford



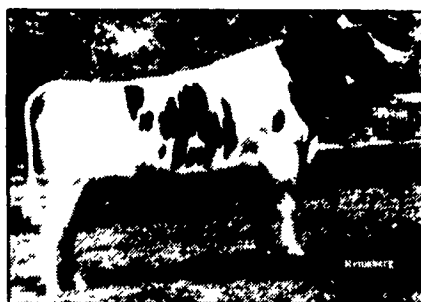
QH1307 Latuch Glendell BUFORD, VG-86  
 USDA 1/88 84 dtrs, 44 herds 21,172m 3 6% 767f  
 PD +\$198 +1,005m +.01% +62f, Rpty. 77%  
 Protein +\$168 -14% +26P, Rpty. 77%  
 CYS +\$154 CFP +88 lbs.  
 HFAA 1/88 PDT +1.00, Rpty. 81% TPI +718  
 Pedigree GLENDELL X PETE aAa N/A  
 Calving Ease - N/A

## Secret



1H406 Thonyma SECRET, VG-87  
 USDA 1/88 46 dtrs, 34 herds 20,058m 3 7% 733f  
 PD +\$194 +1,002m +.00% +60f, Rpty. 73%  
 Protein +\$206 +.06% +64P, Rpty. 73%  
 CYS +\$212 CFP +124 lbs.  
 HFAA 1/88 PDT +0.33, Rpty. 71% TPI +861  
 Pedigree LOCUST GLEN X CONDUCTOR  
 Calving Ease 10% (.52 Accuracy) aAa 351246

## Pac-Man



QH885 Oldtown PAC-MAN-ET, VG-85  
 USDA 1/88 65 dtrs, 55 herds 19,995m 3 4% 683f  
 PD +\$106 +1,652m -.00% +43f, Rpty. 74%  
 Protein +\$150 -.03% +47P, Rpty. 73%  
 CYS +\$153 CFP +90 lbs.  
 HFAA 1/88 PDT +1.21, Rpty. 79% TPI +750  
 Pedigree CHAIRMAN X TRUMP aAa 345120  
 Calving Ease 10% (.57 Accuracy)

## Lincoln



1H456 Tikvah Bell LINCOLN-ET, VG-85  
 USDA 1/88 37 dtrs, 27 herds 18,707m 3 6% 680f  
 PD +\$143 +1,323m -.04% +41f, Rpty. 59%  
 Protein +\$142 +.00% +41P, Rpty. 59%  
 CYS +\$140 CFP +82 lbs.  
 HFAA 1/88 PDT - N/A TPI N/A  
 Pedigree BELL X CHIEF aAa 435621  
 Calving Ease 9% (.57 Accuracy)

## Frontier



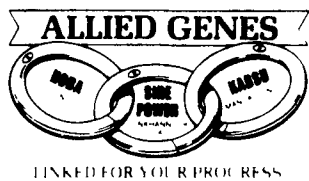
QH939 Browncroft FRONTIER-ET, GP-82  
 USDA 1/88 46 dtrs, 42 herds 19,270m 3 5% 669f  
 PD +\$133 +1,418m -.11% +31f, Rpty. 64%  
 Protein +\$132 +.01% +45P, Rpty. 64%  
 CYS +\$128 CFP +76 lbs.  
 HFAA 1/88 PDT +1.01, Rpty. 44% TPI +681  
 Pedigree CHAIRMAN X JET STREAM aAa N/A  
 Calving Ease 16% (.63 Accuracy)

## Ned Boy



QH719 Whittier-Farms NED BOY, VG-88  
 USDA 1/88 74 dtrs, 63 herds 18,598m 3 7% 696f  
 PD +\$153 +1,000m +.10% +56f, Rpty. 82%  
 Protein +\$158 +.03% +39P, Rpty. 81%  
 CYS +\$165 CFP +95 lbs.  
 HFAA 1/88 PDT +2.18, Rpty. 78% TPI +844  
 Pedigree CAVALIER X SENSATION NED  
 Calving Ease 8% (.95 Accuracy) aAa 516423

**Check your matings — make the right moves with Allied Genes!**



**MARYLAND**  
 Ted Ridgely  
 Phone: 301-898-9101  
 Toll Free  
 Technician Service  
 1-800-227-6417

**WEST VIRGINIA**  
 Washington, Green &  
 Fayette Co. in PA  
 Jim Pifer  
 Phone: 304-686-2100



**PENNSYLVANIA**  
 Northcentral PA  
 J Hershey Myer  
 Phone 717-523-3090

**Northeastern PA**  
 Don Hibbard  
 Phone: 717-836-3168

**Southcentral PA**  
 Ed Gulnac  
 Phone: 814-847-2520

**Southeastern PA & NJ**  
 Eldon Ford  
 Phone: 717-933-5961

**Western PA**  
 Roger Pertl  
 Phone: 412-794-5423