

# Farmers, Ranchers Eligible For Major Conservation Awards

WASHINGTON, D.C. — The search is on for farmers and ranchers who conserve their soil and water in innovative and cost-effective ways.

The sixth annual National Soil and Water Conservation Awards program is sponsored by the National Endowment for Soil and Water Conservation and funded by the Du Pont Company.

One farmer or rancher in each state is selected by June 1988 and

that family is honored in a variety of statewide events. The state winners are eligible for national honors.

"We believe that recognizing the true leaders who achieve soil and water conservation can encourage many others to adopt improved conservation practices," said Emmett Barker, chairman of the Endowment and president of the Farm and Industrial Equipment Institute. "These

remarkable farmers and ranchers show that soil and water conservation can be accomplished voluntarily by people who do it because it is good business. We want everyone to know that conservation is an essential investment in a healthy, sustainable agriculture."

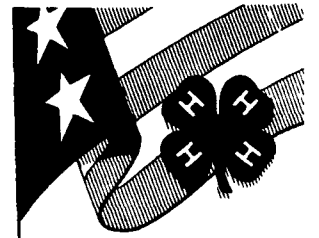
John A. Krol, group vice president of Du Pont Agricultural Products, said, "We are in the midst of a revolutionary change in the way people work their land to produce

food and fiber. With the new farm laws and water quality laws taking hold, it is not enough to highlight the importance or the responsibility of conserving agricultural resources. It is not enough to point out the potential impacts of not conserving resources. We must help many more people understand how to protect their resources and how to blend conservation effectively into their farming/ranching operation. That's why the Du Pont Company is funding this important conservation program."

The top conservation farmer or rancher in each state is selected by committees of farm, conservation and government leaders. From these state winners, 10 national finalists are selected. They are their spouses receive an expense-paid trip to attend a national

awards ceremony in the fall. From the 10 finalists, three national winners are chosen to receive a \$1,000 cash award at a special ceremony in Washington.

National winners in the 1987 program were from Missouri, Nevada and Vermont. The other finalists were from Alabama, Illinois, Maryland, Michigan, New Jersey, North Carolina and Oregon.



**JOIN TODAY**

Contact Your County Extension Office

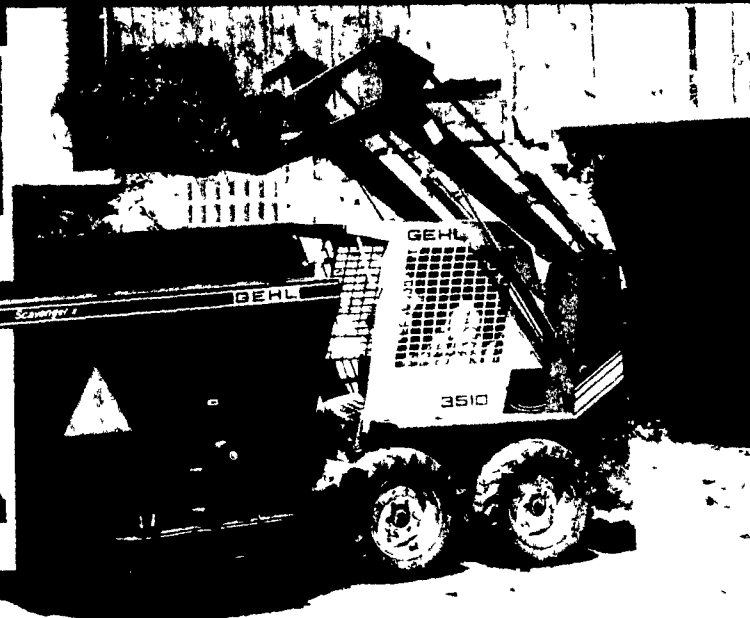
# GEHL



Load-Trak T-bar hand controls allow precision operation and easy maneuverability



Rollback ROPS provides easy access to engine and driveline



## Fast and Easy

You'll get more jobs done faster and easier with a Gehl skid loader. That's because Gehl's exclusive **Load-Trak T-bar hand controls** are easy to operate with no complicated foot pedals to slow you down. As a result, you have greater maneuverability plus more precise bucket and drive control.

Inside and out, a Gehl skid loader is built for precision operation, with additional user-friendly features such as these:

- Built-in secondary operator restraint safety bar serves as a comfortable padded arm rest
- Quick Lock attachment change gets you ready to go to work fast with the attachment of your choice: specialty and utility buckets, manure forks, backhoe, trencher, pallet fork, utility fork with grapple, tree digger, hydraulic auger and more.

■ ROPS enclosure rolls back for easy serviceability; engine access is easy too

■ Self-leveling lift action keeps loads in the bucket. Stop in at your Gehl dealer and test drive a versatile Gehl skid loader. You'll see why it sets a fast pace on any job. Seven models to choose from with 750 lb to 2,050 lb SAE operating capacities.

**Convenient Gehl Finance** can make your Gehl skid loader even more attractive and affordable with the low interest rates and payment options. Gehl Company, West Bend, Wisconsin 53095.



More for your machinery dollar

## FLEXIBLE FINANCING

Stretch your equipment purchase dollars with Gehl Finance. Talk to your participating Gehl dealer about one of our current programs:

GEHL FINANCE is a division of GEHL COMPANY, West Bend, WI 53095. Terms, conditions and restrictions apply. See your dealer for details.

**Waiver of Finance on Mix-Alls, manure spreaders and skid loaders to May 1, 1988, on hay & forage equipment to July 1, 1988\***

**Low APR\***

|    |               |      |
|----|---------------|------|
| OR | 12 month term | 0%   |
|    | 24 month term | 7.9% |
|    | 36 month term | 8.9% |
|    | 48 month term | 9.9% |

**GEHL FINANCE**

### SEE YOUR LOCAL DEALER

**ARNETT'S GARAGE**  
Hagerstown, MD  
301-733-0515

**ECKROTH BROS. FARM EQUIPMENT**  
New Ringgold, PA  
717-943-2131

**ELDER SALES & SERVICE, INC.**  
Stoneboro, PA  
412-376-3740

**UMBERGER'S OF FONTANA**  
Lebanon, PA  
717-867-5161

**BENNETT MACHINE CO.**  
Milford, DE  
302-422-4837

**MILLER EQUIPMENT CO.**  
Bechtelsville, PA  
215-845-2911

**SPRINGS EQUIPMENT, INC.**  
Springs, PA  
814-662-2222

**GUTSHALL'S INC.**  
Loysville, PA  
717-789-4343

**NICHOLS FARM EQUIPMENT**  
Bloomsburg, PA  
717-784-7731

**BINKLEY & HURST BROS.**  
Lititz, PA  
717-626-4705

**D.W. OGG EQUIPMENT CO.**  
Main Location  
Frederick, MD  
301-473-4250  
301-293-2033  
Taylorsville, Md.  
(Bob's Welding)  
301-829-2042

**SYSTEMA FEED SERVICE**  
Sussex, N.J.  
201-875-5449

**STOUFFER BROS. INC.**  
Chambersburg, PA  
717-263-8424

**PETERMAN FARM EQUIPMENT, INC.**  
Carlisle, PA  
717-249-5338

**LINCOLN SUPPLY & EQUIPMENT CO.**  
Somerset, PA  
814-443-1691  
McCoole, MD  
301-786-6800

**PEOPLE'S SALES & SERVICE**  
Oakland Mills, PA  
717-463-2735

**GEO. W. KINSMAN, INC.**  
Honesdale, PA  
717-253-3440  
**LEBANON VALLEY IMPLEMENT CO., INC.**  
Richland, PA  
717-866-7518

**HINES EQUIPMENT**  
Cresson, PA  
814-886-4183  
Bellwood  
814-742-8171

**A.L. HERR & BRO.**  
Quarryville, PA  
717-786-3521

## WE GIVE FREE ESTIMATES AND DISCOUNT PRICES ON ALL NEW EQUIPMENT

- New And Used Barn Cleaner Chains
- Used Barn Cleaner Units
- Feed Carts

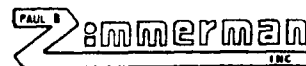
### WATER BOWLS

6 Different Types Available From Poly Vinyl To Stainless Steel



Simple To Install, Easy To Keep Clean

OVERSIZED DRIVE SPROCKETS AVAILABLE FOR USED PATZ CHAINS



**FARMWAY**  
Barn Equipment Installed

**VALMETAL** Silo Unloader & Feed Handling Equip.

Full Line Barn Equipment Distributor For York And Adjoining Counties

## JOSEPH FISHER and SONS

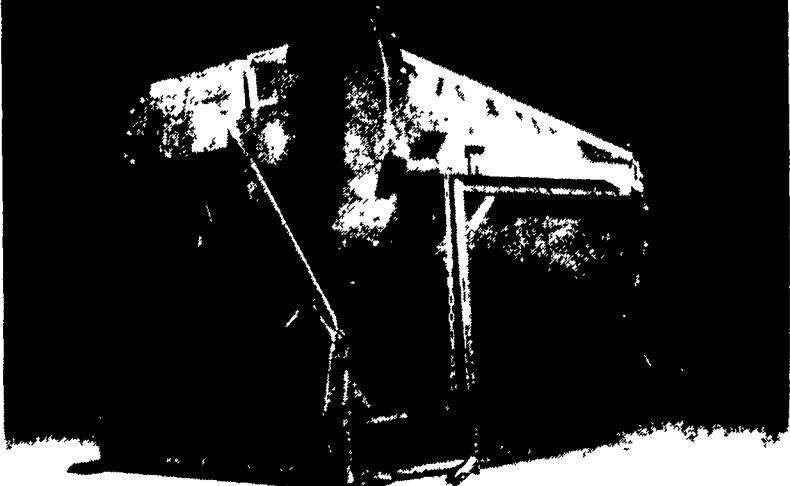
1820 Millcreek Road, York, PA 17404

(717) 292-6668

## TMR

### Total MIXED Rations

The Success of the Mix Depends Upon the Design of the MIXER!



Available In Stainless Steel Or Mild Steel  
In Stock For Delivery Today

Check the VAN DALE Advantage!

**VAN DALE**

## Lancaster Silo Co.

2008 Horseshoe Rd., Lancaster, PA

717/299-3721