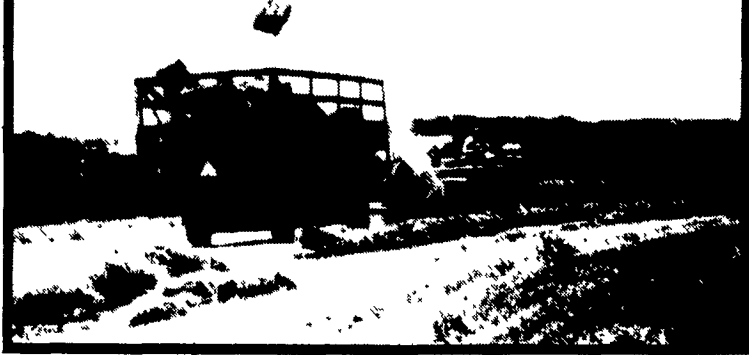


# HAY MARKETS



## Pa. Grain

Monday, Mar. 28, 1988  
Report supplied by PDA

COMPARED WITH LAST MONDAY'S MARKET FOR SOUTHEASTERN, CENTRAL AND SOUTH CENTRAL PA.: CORN STEADY TO .06 HIGHER; WHEAT AND EAR CORN UNEVENLY STEADY; BARLEY UNEVENLY STEADY TO WEAK; OATS MOSTLY STEADY TO .10 LOWER; SOYBEANS STEADY TO .20 HIGHER.

### SOUTHEASTERN PENNSYLVANIA

CORN NO. 2-Y RANGE 2.15-2.40, AVERAGE 2.28, \*CONTRACT FOR HARVEST 2.15-2.40; @WHEAT NO. 2 RANGE 2.90-3.20, AVERAGE 3.10, \*CONTRACT FOR HARVEST 3.00-3.23; BARLEY NO. 3 RANGE 1.75-1.85, AVERAGE 1.76, \*CONTRACT FOR HARVEST 1.30-1.55; OATS NO. 2 RANGE 1.85-2.25, AVERAGE 2.05, \*CONTRACT FOR HARVEST 1.30; SOYBEANS NO. 1 RANGE 6.15-6.59, AVERAGE 6.39, \*CONTRACT FOR HARVEST 6.35-6.55; \*GR. SORGHUM #2 RANGE 2.00, AVERAGE 2.00, \*CONTRACT FOR HARVEST 2.00, #EAR CORN RANGE 57.00-77.00, AVERAGE 65.77.

CENTRAL PENNSYLVANIA  
CORN NO. 2-Y RANGE 2.15-2.30, FEW REPORTED 2.00, AVERAGE 2.18;

@WHEAT NO. 2 RANGE 2.75-3.10, FEW REPORTED 2.55, AVERAGE 2.86; BARLEY NO. 3 RANGE 1.30-1.75, AVERAGE 1.53; OATS NO. 2 RANGE 1.80-2.05, AVERAGE 1.94; SOYBEANS NO. 1 RANGE 5.90-6.34, AVERAGE 6.13; \*GR. SORGHUM #2 RANGE 1.90, AVERAGE 1.90; #EAR CORN RANGE 52.00-60.00, FEW REPORTED 70.00, AVERAGE 59.00.

### SOUTH CENTRAL PENNSYLVANIA

CORN NO. 2-Y RANGE 2.00-2.35, AVERAGE 2.26; @WHEAT NO. 2 RANGE 2.50-3.10, AVERAGE 2.84; BARLEY NO. 3 RANGE 1.20-1.85, AVERAGE 1.55; OATS NO. 2 RANGE 1.70-2.05, FEW REPORTED 2.20, AVERAGE 1.96; \*SOYBEANS NO. 1 RANGE 5.60-6.00, AVERAGE 5.80; \*EAR CORN RANGE 60.00-77.00, AVERAGE 68.86.

### WESTERN PENNSYLVANIA

CORN NO. 2-Y RANGE 1.90-2.35, AVERAGE 2.07; @WHEAT NO. 2 RANGE 2.60-3.11, AVERAGE 2.90; OATS NO. 2 RANGE 1.75-2.10, FEW REPORTED 2.30, AVERAGE 1.97; SOYBEANS NO. 1 RANGE 6.00, AVERAGE 6.00; \*EAR CORN RANGE 55.00-63.00, AVERAGE 58.00.

### SOUTHEASTERN, CENTRAL & SOUTH CENTRAL SUMMARY

CORN NO. 2-Y RANGE 2.10-2.40, AVERAGE 2.25, @WHEAT NO. 2-Y

RANGE 2.75-3.20, AVERAGE 2.94; BARLEY NO. 3 RANGE 1.30-1.85, AVERAGE 1.62; OATS NO. 2 RANGE 1.80-2.15, AVERAGE 1.98; SOYBEANS NO. 1 RANGE 6.00-6.59, AVERAGE 6.21; \*EAR CORN RANGE 53.00-77.00, AVERAGE 64.23

### MONTH AGO

CORN NO. 2-Y RANGE 2.21; @WHEAT NO. 2-Y RANGE 3.04, BARLEY NO. 3 RANGE 1.65, OATS NO. 2 RANGE 2.04; SOYBEANS NO. 1 RANGE 6.07, \*EAR CORN 63.87.

### YEAR AGO

CORN NO. 2-Y AVERAGE 1.68, @WHEAT NO. 2-Y AVERAGE 2.76, BARLEY NO. 3 AVERAGE 1.46, OATS NO. 2 AVERAGE 1.68, SOYBEANS NO. 1 AVERAGE 4.78; \*EAR CORN AVERAGE 51.53.

## Regional Hay

March 28, 1988  
Eastern, Pa.  
On-Farm Sales

HAY & STRAW MARKET FOR EASTERN PA. (ALL HAY NO. 2 & BETTER PRICES PAID BY DEALERS AT THE FARM & PER TON.) HAY & STRAW SLOW, MOSTLY STEADY TO WEAK.

ALFALFA 70.00-110.00; MIXED HAY 55.00-90.00; TIMOTHY HAY 55.00-75.00; STRAW 50.00-80.00; MULCH 25.00-40.00.

LANCASTER CO.  
HAY AUCTIONS  
SUMMARY OF LANCASTER CO.

## HOSTETTER PORK



Wanted To Buy  
Crippled and  
Disabled Sows  
and Boars

Hogs Slaughtered For  
Federal Inspection  
PHONE 717-274-7609

HAY AUCTIONS FOR WEEK ENDING 3/25/88: PRICES PER TON: LOADS: 284 HAY, 85 STRAW, AND 20 EAR CORN. ALFALFA 90.00-152.00, MIXED HAY 61.00-134.00; TIMOTHY HAY 78.00-110.00; STRAW 57.00-90.00; EAR CORN 68.00-83.00.

## CENTRAL PA. HAY AUCTIONS

SUMMARY OF CENTRAL PA. HAY AUCTIONS FOR WEEK ENDING 3/25/88 PRICES PER TON. LOADS 228 HAY, 51 STRAW AND 10 EAR CORN ALFALFA 80.00-137.50, MIXED HAY 50.00-93.00; TIMOTHY HAY 57.00-104.00; STRAW 45.00-82.50; EAR CORN 65.00-81.00

## New Holland Hay

New Holland, PA  
Monday, Mar. 28

Report Supplied by Auction  
212 LOADS.  
ALFALFA: 77.00-140.00, 2 AT 150.00.  
MIXED HAY: 63.00-135.00, 1 AT 155.00 AND 1 AT 162.00.  
TIMOTHY 72.00-122.00.  
ORCHARD GRASS: 85.00  
CLOVER 67.00-100.00.  
OATS. 2.20-2.80 BU  
CORN FODDER: 71.00 AND 72.00  
EAR CORN 78.00-84.00  
STRAW 75.00-90.00.

## Green Dragon Hay

Ephrata, Pa.

Friday, Mar. 25, 1988  
Report Supplied by Auction

TOTAL LOADS: 113.  
ALFALFA: 50.00-152.00.  
MIXED HAY: 45.00-150.00.  
TIMOTHY: 94.00-125.00.  
CLOVER: 86.00.  
OATS: 2.30 & 2.80 BU.  
EAR CORN: 75.00-87.00.  
CORN FODDER: 44.00.  
STRAW: 39.00-90.00.

## Vintage Hay

Paradise, Pa.

Thursday, Mar. 31, 1988  
Sale Time 1:00 P.M.

Report Supplied by Auction

TOTAL LOADS: 28 LDS.  
ALFALFA HAY: 86.00-135.00.  
MIXED HAY: 53.00-120.00.  
TIMOTHY: 107.00-107.50.  
CLOVER: 89.00.  
STRAW: 69.00-78.00.

## Seeking Profits In Commodities Trading?

- Hedging
- Speculating
- Managed Account
- Commodity Options

Call Forney Longenecker,  
Commodities Investment Executive,  
At (717) 295-8914

SHEARSON  
LEHMAN HUTTON  
29 E. King St.  
Lancaster, PA 17603

SHEARSON  
LEHMAN  
HUTTON

# HERE TO STAY!

MAKE 1988 THE YEAR TO GET ACQUAINTED WITH  
NEW HOLLAND SALES STABLES, INC. - THE ACTION AUCTION

## MONDAY



### EARLY BIRD HOG SALE

7:30 AM  
For Your Protection Your Hogs Must  
Be Identified

## 10:00 AM



## 11:00 AM



HAY  
STRAW  
GRAIN



1:30 PM  
BEEF SALE  
CALF, SHEEP,  
GOATS

## WEDNESDAY



### HEIFERS, BULLS

## NEW HOLLAND SALES STABLES, Inc.

12 Miles East of Lancaster  
on Route 23, New Holland, Penna

The Action Auction  
717-354-4341

Mgr - Abe Diffenbach - 717-393-4464  
Norman Kolb - 717-397-5538

Field Representatives  
Alan Diffenbach 717-656-9806  
Luke Eberly 215-267-6608 - 738-1865

### WEDNESDAY - 1:30 P.M. FEEDER PIG SALE

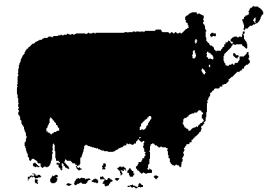


We endeavor to keep our barns cleaner  
than yours. State graded until 12 Noon

## THURSDAY

### 10:00 AM

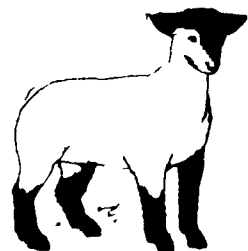
### BULLS -



### STEERS - BEEF COWS

### 1:30 P.M.

### CALVES



### SHEEP GOATS

market your livestock to New Holland Sales, your neighbor does  
Pick-up your check before you leave