

# STITZEL FARM EQUIPMENT, INC.

East Windsor St. & Krick Lane Hamburg, PA 19526

Phone Bus. 215-562-8377 Home 215-562-7451 or 215-562-5740



**COMBINES** w/Good Selection Of Heads: We have 16 late model, very nice, local, one-owner combines.

1981 NH TR85, 4WD, V8, Hydro, full equipment.

1983 MF 860 Hydro V8 motor, fully eq., low hrs., looks like new, w/rear whl. drive w/1163 C.H. & 15' flex U2, reel, like new.

M.F. (82) 850 4 WD Hydro w/16' Flex + 1163 C.H., 900 hrs., real nice, \$47,500 \$45,500.

M.F. 1980 750 Gray Cab, Hydro, fully eq., 700 hrs. JD 8820 fully eq. w/Turbo Hydro w/Reverse feeder house and chopper \$27,500; JD 7720 and 6620 available with 4WD.

JD (81) 6620 S.H., 1300 hrs., Dial-A-Matic w/215 Flex. JD '81 Model, 6620 LL, w/215 flex, real nice.

JD '81 Model 6620 LL w/216 Flex, very nice.

JD (81) 6620 Side Hill w/700 hrs., looks like new.

JD (81) 4420, low hrs., very nice.

1976 JD 7700, real nice.

JD '81, 7720, Cab, Air, Turbo, Hydro w/220 Flex.

JD 6620 S.H., 800 Hrs., real nice, \$35,000 \$33,500.

JD 6620 LL, 1 owner, nice, \$27,500 \$25,500.

(75) 6600 D. Rotary Screen good.

1977 JD 4400 D., C.A. w/23x26 tires, \$11,500.

55 Sq B. w/Cab-Good w/2 Heads, \$3,250; 55 CS Sq Back w/Cab.

IH (Used) 1460 Axial Flow - 800 Hrs., 863 C.H. & 15' grain for, \$38,500 \$36,500.

MF 550 D., C.A., low hrs. (77) IH 815 D., C.A. Hydro, 4WD w/810 Grain & 4R Corn.

IH (77) 915 D., C.A. Hydro Combine w/863 C.H.

(76) Gleaner L Corn & Soybean Special, D, C.A. Hydro w/16' Flex & 630 Corn.

IH 715 Gas w/Cab & 810 grain for \$4,850; IH 82 Pull Combine, (75) 510 D. Hydro w/Cab, NH TR70 C.A. Hydro; Gleaner (76) FD w/C.A.-Nice; IH 105 w/Cab & 10' Grain, nice, IH 205 Combine w/Cab & 10' Grain

N.I. 702 & 705 Uni-Systems w/Full Eq.; NI 702 Uni w/727 Bed, 729A Sheller & C.H., NI 702 D. w/727 bed & 3R C.H., 767 Super Chopper; NI 727 Husking Beds; NI 737 Husking Beds, NI 729A Shellers; NI Uni 740 Feeder House.

**CORNHEADS:** J.D. 843 LP, 643 LP, 643, 444 LP, 444, 443, 344, 343, 244, 243; 205 (40) 234, 435; JD 454 Row Crop Head.

IH 863, 844, 843, 833, 744, 227.

AC GL 440, C440, A438 Black, A630 Black, L2, L438, M430, Gleaner C430 C.H., F335

M.F. 1163, 1144, 1143, 63, 44, 33, 43, 24, 222, 422, 44-\$900 & Up.

NI 846 N 6R C.H.; 743, 730, 734, 725, 723, 762, 763, Ford 4-30"; Case (404); NH 962 4RW, 4RN, 6RN Corn Head.

NH 924, 4RW; NH 974 6R; White 706N; Oliver White 4N

**GRAIN HEADS** JD Used 12'-15' Incl 213 & 215 & (2) JD 216 Flex, 213 & 215 Rigid

IH 810-13' Thru 16.5' w/Reg or Floating

M.F. 10'-16' Reg or Floating Bar, AC E10', G15'

NI 713 Flex Or Rigid

NH 972, 20' Flex; NH 960, 13'.

**TRACTORS:**  
J.D. New 2950 w/R.G.; JD 4450 ROPS, PS, MFWD, 500 Hrs., Like New; Used JD 2950 C.A., Like New; (3) JD 4840's C.A. P.S. Duals & Quick Hitch, 4440 C.A.P.S. - Real Nice; JD 4440 C.A. P.S.; JD 4440 C.A. QR, 20.8x38 Tires; JD 4240 C.A.P.S.; JD 2940 MFWD, real nice; JD 2940 w/FWD & Roll Guard; JD 2440 Dsl., U, original; 1977 JD 4230 C.A., Q.R., sharp, 2200 hrs.; JD 4230 Q.R., ROPS, new paint, 2940 w/R.G.; 8630 4 WD C.A.Q.R., Full EQ. w/Duals; 8430 4 W.D. C.A.Q.R., Fresh Motor - Real Nice; 6030 C.A. Duals - Nice; JD 4630 C.A.P.S. w/new tires; 4630 SR w/Cab & Air; JD 4430 C.A.Q.R., 30.8x38; JD 4430 C.A.Q.R., 20 8x38 Radials; JD 4430 Cab., Q.R. w/Front Whl. Assist; JD 4430 CA QR w/front wheel assist; JD 4430 C.A.Q.R.; 4230 C.A.Q.R.; JD 4040 PS w/R.G.; JD 4030 w/creep trans., JD 2630 w/Hi-Lo; 1530 w/Hi-Lo; (70) 5020 - \$5,900; 4520 w/Factory Cab; JD (10) 4020's 1964-1972; JD 4020 S.C., WFE, 2 Hydraulics, Diff. Lock, JD 4020 PS, 4020 S.C., W.F.E.; 4020 P.S., S.C., W.F.E.; 4020 w/58 Loader; JD 4020 D. WFE; 3020 D S.C., W.F.E.; JD 3020 Dsl., WF; JD 3020 D Tricycle; 2520 Dsl.; JD 3020 G.; JD 4520 R.G. & cooler w/30 5x32 tires; JD 2020 Gas w/48 Loader; JD 4010 D. WFE, Real Nice; 4010 D w/new clutch; JD 4010 Dsl., WFE; 630 Gas; JD 430 Utility w/3 pt.; JD 4010 D., good, JD 3010 D., Tricycle; JD 2510 Dsl.; 630 Gas, 620 LP, JD 70 Tricycle.

I.H. (New) 5088 Full Eq. C.A. never used. Sale Price, \$33,450; 3588 2+2 CA, 1400 hrs.; 786, one owner, original, 3288 CA, 670 hrs.; 1086 CA w/Dual Whls., original; 1586 C.A. Nice; 1586 w/R.G.; IH 1086 ROPS, w/Enclosure Very Nice; IH 986 C.A. Duals, Nice, 886 w/R.G.; 1800 Hrs.; IH 686 Dsl., original, Farmall 1066 C.A., original, \$8,350, IH 1066 Cab & Duals; 1568 C.A. - 1,000 Hrs., Real Nice; 1566 w/Cab, 1976 Model 1566 CA, Black Stripe, 1466 w/Cab; IH 1466 w/Cab & Duals, Original, IH 1466 C.A., as is; IH 1466 Fender, new motor, nice; F1066 w/Year Round Cab; F1066 C.A.; 1066 Hydro - Original, \$8,350; 966 Original, F966 WFE, 3 Pt., New TA & 38" Rubber, 766D.; IH 584 Dsl.; 674 D.; 574 D. w/Loader; IH 574 D w/2250 Loader; IH 544 Gas w/#2000 Loader, Farmall 544 Gas, WF, 3 pt.; IH 444 U. Gas w/IH 1501 Loader, 656 Gas; 1256 w/Cab, Nice; 756 D W.F.E. & F.H., 756 G Hi-Clear, IH Hydro 70 Gas, WFE, 3 Pt.; 656 Gas - W.F.E. - Original; 656

Gas & Diesel; 656 D. Hi-Clear; IH 1026 Hydro w/Cab, As Is, 826 D Hydro; 1206, Nice; Farmall 806 Dsl., WF, FH, 38" Tires, Nice, 706 D. - W.F.E. - 3 pt. - \$5,000; F706D., WFE, 3 pt.; 706 Gas T/A, W.F.E.; F504 D WF 3 Pt., Real Nice; IH 240 Utility; F560 D., WF, FH; F560 D w/Fast Hitch; IH 460 U. Gas, FH, PS & Shuttle; F450 Gas, Tri., F.H.; F560 Gas; F450 D.; F504D.; Farmall 200; Super A w/Sickle Mower, Plow & Cultivator; Farmall Super A w/Wagner Hyd. Loader w/Blade & Plow.

New AC 8050 C.A., P.S., rad. tires, fully eq.

A.C. New AC 6080; Used AC 6080 w/ROPS; AC 7060 C.A. w/Duals; AC 7060 C.A. Duals, One Owner; 7045 C.A., 20SP, 7040 C.A.P.S., Like New; AC 7000 C.A., PS, Original; AC 200 D original; AC 220, real nice; XT190D, w/3 pt.; AC 175D. w/Ldr.; AC D17 Series IV D 3 Pt., WFE; AC D14 w/Ldr.; AC CA, WF w/Cult.

CASE Case 1594, P. Shift, low hrs., like new, Case 2590, CA, PS, 1600 hours; 1370 C.A.P.S. Factory Duals; 2090 CAPS, \$14,800; Case 930D, Standard; 930D, WF 3 pt.; 830 Gas, WF, 3 Hydraulics, Diff. Lock, JD 4020 PS, 4020 S.C., W.F.E.; 4020 P.S., S.C., W.F.E.; 4020 w/58 Loader; JD 4020 D. WFE; 3020 D S.C., W.F.E.; JD 3020 Dsl., WF; JD 3020 D Tricycle; 2520 Dsl.; JD 3020 G.; JD 4520 R.G. & cooler w/30 5x32 tires; JD 2020 Gas w/48 Loader; JD 4010 D. WFE, Real Nice; 4010 D w/new clutch; JD 4010 Dsl., WFE; 630 Gas; JD 430 Utility w/3 pt.; JD 4010 D., good, JD 3010 D., Tricycle; JD 2510 Dsl.; 630 Gas, 620 LP, JD 70 Tricycle.

NH 1495 Gas SP Haybine; IH 830, 3R; NH 477 Haybine; Super A w/Cult.; (2) NH 822 C.H.; New Yanmar Ldr.; 7 Shank V Ripper; Farmhand Grinder Mixer w/Hyd. Drive; AC WD 45, JD 845 4X Rollover; IH 56, 2R Planter; D17 Gas w/Ldr.; JD 5X Semi Rollover; Case 2294 C.A. P.S. 600 Hrs.; NH 846 Rd. Baler; NH 467 Haybine; JD 38 Chopper w/Direct Cut Head; JD 1209 Haybine; Farmall Cub w/Woods Mower; NH Tank Spreader; NI 45' Elevator; JD 400 Riding Tractor; NH TR70 w/Cat Dsl.; JD 643 LP; Cab 185 Lobby; AC 185; JD 444 C.H.; IH 3288 C.A., MFWD; JD 716 Tandem Axle w/Roof; Martin Scavenger Tandem Axle Spreader; Oliver 1655 D.; NH 3R 30" C.H.; MF 300 w/QT Heads; JD 555 Crawler Loader; 1983 Butler Batch Dryer; AC 653 Crawler w/6 Way Blade, IH 80 Pull Combine.

**CORNPICKERS:** (5) (Used) 325-2RN w/12 Roll Husker, Shellers & Super Shellers; NI 325 w/8 Roll Bed; (4) (Used) 324-2RW w/12 Roll Huskers, Shellers & Super Shellers; (2) NI 323, 1R Picker, \$2450-\$2750.

New NI. 329 Super Sheller List \$6700.00, Special \$3,550; N.I. 330 - 3 RN w/nice.

Controls, 3 RW C.H. & Hay PU; Gehl CB 1200 Chopper.

(2) GEHL 600 w/2R. Hesston 7020 Chopper w/1R & Hay PU.

**FORAGE HEADS:** N.H. 717-S Direct-Cut for 770 & S717; 890 EN-2RN Snapper Head; 770-1R Snapper Head; NH 822 Silage Head; 1, 2, & 3R Silage Head; NH 880W PU; NH 880 S Direct Cut Head; NH 890 N3 3R Corn Head; Incomplete.

J.D. 1, 2 & 3R Snapper Heads; 2 & 3 R Silage Heads, New & Used 5 1/2' Hay Pickups; JD 243 C.H. w/adaptor plate; 3 JD C.H. harvester adaptor plates; JD 8' Direct Cut Head; JD 4R 30" Stalker Head, Like New.

I.H. 2 R.N. Silage For 550-650.

FOX 984, 4R Silage Head; 2 CSB 2RW - Snapper Head; 263-2 RW; 215-109 Hay Pickup; 476 - 7' Hay Pickup.

**FLAIL CHOPPERS:** Used NH 38 & 36; Bearcat 72A Flail Chopper; IH #50 4R Shredder.

**HAY EQ. BALERS:** JD 337 Baler w/Thrower, used 2 seasons; JD 466; JD 346 Wire w/Thrower; JD 500 Rd. Baler; JD 410 Rd. Baler.

NH 315 Baler; NH 315 Baler w/70 Thrower; NH 275 w/Thrower; NH 282 No Thrower; N.I. 456 Round Baler; N.H. 851 Rd Baler; Hesston 5400 Round Baler; MF 124 Baler w/Thrower, Vermeer 706 Round Baler; Ford 509 Baler; NH 851 Rd Baler.

**RAKES:** Used NH 258 Rake, Hyd. Drive & Dolly Wheel.

J.D. 660 w/Dolly Wheel; JD 670 Rake w/Dolly Whl.; IH 3 Pt. 5 Bar Rake, Used Grim 17' Hay Tedder; Kuhn 4 Star Tedder.

**HAYBINES:** NH 1495 D Hydro w/Half Cab, NH 495 Haybine, 478, NH 469 Haybine; IH 1190 Haybine; JD 1219 Haybine, like new; JD 1209 Haybine; IH 990 haybine. (Used) M.C. 7E; (Used) MC 9E Rotary Scythe, NI 279 Cuditioner; NI 272 Cuditioners; N.H. 1034 Stack Wagon; NH 1010 Bale Wagon; NH #90 Bale Mover.

**PLANTERS** JD 7000, 12R Front Fold Planter, Dry Fert. w/No-till, full equipment, JD 7800 8R 38", Full Equipment; (2) JD 7000, 8R 30" Liq Fert., Full Equipment; JD 7000, 8R 30" Dry Fert., Full Equipment, JD 7000, 6R Conserv. Dry Fert.; JD 7000, 6R Dry Fert., Fully Equipped; JD 7000, 4R; (Used) 7000-6R Cons Liquid w/No Till, 7000-4R Dry & Liquid; JD 4R Cons. w/Dry Fert. & Insect.; (2) JD 7000, 4R Dry Fert., Full Equipment; JD 7000, 4R 36" Solid Dry Fert., Full Equipment; JD 1240 pla Solid nice, JD 1240, 4R Planter Solid; IH 800, 8R Liq Fert., IH 800, 8RN End Transport Planter w/Dry Fert., IH 800, 6R Dry Fert.; IH 400, 6R Dry Fert w/No-Till, IH Solid Liq Fert.; IH 56, 4R Planter, Hinkler 4R Econotill Planter, No-till, w/Kinze Units

**DRILLS** JD 8300 (Like NEw) 100 Acres, 21x7 DD w/Soybean Att., JD 8300, 21x7 DD w/Press Wheels, JD 8300 23x7 Drill, JD 8350, 23x7 w/Fert & Seed

IH 5100 21x7 Drill, JD 8250 Drill w/Solid, x7 SD, Tye 13' No-Till Drill, Brillion 8' & 10' Seeder, New Gandy 1011A Fert Spreader, Brillion SS 1201 10' Transport Seeder.

**GRINDERS/MIXERS** IH Solid nice, Gehl 115 grinder mixer, NH 352 Grnder Mixer.

**BLOWERS** Gehl 99, nice; JD 65 (SOLD)

**TILLAGE EQ. PLOWS** JD 2 #84 Solid, Howard 4X Para Plow, Ford 142, 4X Plow; IH 540 4X Semi; JD 2500 4x18 Reset, JD 4X 16" Semi Mount Plow, IH 710, 4X 18 Solid; IH 5x16 Semi-Mo Solid, Reset, IH 540, 4X; IH 720, 5X Toggle Trp, JD 5x Solid, rollover Plow, OLIVER 546-5x16 Spring Reset, White 50 Solid, set, White 508, 6X Reset, JD 2700 6X Reset, IH 700-6x16 Spring Reset, JD 2500 5X Reset, IH 560 6X Plow, JD 3200, 6X Reset, JD 2450, 6X On Land, Oliver 6X Reset; WHITE 549-7X Sp Reset, J D 7X, MF 6X On Land Hitch, JD 2700 8X On Land Hitch Plow, Like Nice, JD 28 Solid, set Onland, IH 800 10X Flex Spring Reset.

**CHISEL PLOWS** Bush Hog 7' Chisel, JD 1600, 8' Pull Chisel, Brillion 9' Chisel, Brillion 10', Ferguson 11' Chisel, IH 55-12', (2) 7' 3 pt. chisel plows, Bush Hog 10' Chisel Plow w/Buster Bar, Brillion 12', Chisel Plow w/Buster Bar, Brady Model 1000 10' & 14' Chisel Plows, Tibben 12' Auto Reset Ripper Chisel

**DISCS** White Solid, Disk w/Gandy Seeder & Harrow; Miller 14' Offset Disk, like new, JD 210 Disk, JD 310 Disk, MF 520, 19' Solid, JD 230, Solid, Hydraulic Fold

**MULCH TILLERS:** Willbeck 13', Glencoe SS18 Fold Soil Saver, Glencoe SS13 Hyd. Fold Soil Saver, (2) Solid 10-11'.

**CULTIMULCHERS** New Dunham Lehr 13' at dealers cost, JD & Brillion 10', 12', 13' & 15' cultmulchers, JD 10' Roller Harrow

**CULTIVATORS** IH 80 2R Front Mount, IH 468, 4R Front Mt; JD 2R Cultivator, 4R S Tine Cultivator, JD 4R Front Mount Cultivator, (4) JD RG 4 Cultivators, JD & IH 6R 3 pt cultivators, MF 6R S Tine Cultivator, Dunham 6R S-Tine Cultivator, J D 1000-25' - Hyd Fold, Brillion 14' Field Cult w/Midwest Harrow, IH 68, 6R Front Mount Cultivator, New IH 4500, 18' Vibra Shank, IH 16' Fold Vibra Shank Field Cultivator, Brillion 22' Hyd Fold Cultmulcher, IH 365, 18' S-Tine Field

Cult

**MISC** Brillion 23'X Fold Packer, Like New, I.H. #2 & 7 Shank V-Rippers, 5 Shank V Ripper w/Gauge Wheels, JD 8 Tooth Sub Soiler, Glencoe Soil-Finisher 12'9" - Like New, (2) Howard 13' Rotavator; Knowles 16' wing trans harrow, used 4 acres; JD Transport w/Solid, Brillion & JD 20' w/Solid, trows

New JD 28' Hyd Fold Rotary Hoe Under Dealer Cost; Used 400-15, JD 400 Rotary Hoe

**INDUSTRIAL CRAWLER LOADERS** JD 840 Soil Loading Scraper, Case 584 D Fork Lift.

**SKID LOADERS** NH L445 D Skud Loader, NH L36, Ford CL40

1978 Case 560C Dsl L. B. ROPS, Cab w/Heat, AC 715B L & B, IH Solid, w/Backhoe, Solid, Chisel, w/Blade, IH TD14, Avide Blade, \$3,995, IH Solid.

**LOADERS & BLADES** JD 45, 48, 58, 143, 145, 148, IH 1850, 2000, 2050, 2350, Case IH #90 Ldr., Like New; MF 246 Loader, Schwartz 1400 loader, Arts-way HD loader for 4WD; (New) J D & I H Buckets, JD 8' Dozer Blade w/4430, Etc., JD 155, 9' Heavy Blade w/Hydraulics

**LAWN & GARDEN** JD 950 w/P Steering, R.G. Dual Hydraulics, JD 950 w/Dual Hydraulics, JD 850 D w/Belly mower, Satoh D w/3PT Tiller, MF 205 D; Cub 185 Lobby w/Mower & 3 Pt., Sears 24 H w/Ldr., 3 Pt., Cadet 782, Cadet 1250 & 1450 (SOLD), 128, J D 430D & 318, 317, 314, 300, 214, 212, 210, 160, 130, like new, 111, AC 716, AC 820 w/3 Pt & Mower, Ecoor Solid w/Mower & Blade, (New) Johnson Loader For Cub Loader; Loader For JD 400, Satoh 650 w/3 Pt., As Is, Kwikway Loader For Cub Lobby

1975 Model Ford LTD Landau, One Owner, Fully Equipped

**Rotary Cutters:** IH Solid, 12' Used FMC 13', Woods Solid, Cutters, New NH Solid, Mower, Woods S106 Ditch Bank Mower

**SICKLE MOWERS** NH 451 Sickle Mower, IH 1300 3 Pt. Sickle Mower, Solid, Pt. JD #10 Side Mount.

**Manure Spreaders** Hed Solid, S1263 Scavenger, NI 12A, Excellent, (SOLD), JD 54 Spreader, NI 218 Tandem Axle Manure Spreader, JD 465 Full Manure Spreader

Trailer load of (New) Kilbros Bins & Running Gears, Used Solid, 375 Bn w/Auger, JD 400 Grain Cart, Real Nice, New E Z Trail 10T Running Gear; Oliv er 6 Solid Gear; Solid Post Hole Digger; Hobbs 1030 985 Ft. Irrigation Reel w/Nelson Big Gun, Used One Day, Farmr Solid, Sprayer, New Demco 500 gal Sprayer, Rex 400 Gallon Sprayer, Arisway 850A Wagon w/Scales, Gehl BF190 Feed Wagon, Schwartz Solid, Mix Wagon, Badger Liq Tank, like new; Field Queen 1408 Side Dump Wagon, Solid, 30 Rock Picker, McKee 720, 84" 3 Pt. Snow Blower, (New) McKee Snow-Blower Front-Mount, JD Quick-Couplers, JD 42' Cast Wheels and Tires, IH Flat Top Fenders For 706-1466, IH 66 Series Cabs, Ansel ROPS Cab For JD 2640, Etc., Ansel Cab w/Air For JD 30 Series, Nice, (New) Full Vision Cabs For MF F 275 & 285, Cab For Case 70 Series, Damaged IH 86 Series Cab, J D & I H Front & Rear Whs JD 243 Corn Head w/Adaptor Plate

Ford Cabover w/Rollback, \$3,850 As Is

Mov All 30' Hyd Implement Trailer

J D Roll Guards, New JD Roll Guard For 2840, 2940, Etc., Fast Hitch for 560 & 450, JD belly mowers for JD 850 & 950 etc.

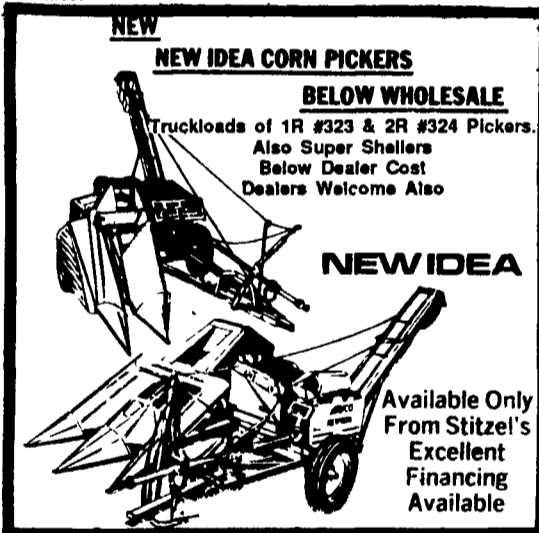
**STRAW CHOPPERS** For JD 4400, 6600 6620, 7700, MF 510

**MECHANICS SPECIALS** TRACTORS 4020 Tr

IH 1256 Motorwork, \$3,950

CASE 1410 - Needs Motor

AC XT190, clutch \$3,950, JD 4520 w/Cab, \$6,950 Farmall 1586 w/fire damage cab



New NI Corn Picker Parts: 323, 324, 325 Beater Units, H.D. PTO's, Elevator Extensions, Mechanical Lift Levers and Elevators

M.F. 2705 C.A., 24SP, Duals, real nice, 1135 C.A.M.P.; 1977 MF 1135 CA, Duals; MF 1085 Dsl., MF 175D, MF 165 U. Gas; MF 1130, MF 40 Industrial Loader, Gas w/Half Cab.

FORD TW 35, 150 hrs., local trade, like new, Ford 7700 DP w/Cab, Ford 6700 w/Dual Power & Ldr.; Ford 6700 A, DP, w/Ldr. & Forklift; Ford 7000 D; Ford 4000 Dsl., original paint; Ford 3000 Gas w/8 SP; County Super 6, 4WD w/3 pt.; Ford 600, Ford 9N.

OLIVER 1855 w/New Tires, Oliver 2050, 1950 T w/Cab - \$5,975; 1650 D., WF w/3SP; Oliver 550 WHITE (New) 2-65 w/F.W.D. & (New) 1730 Loader - List \$29,000 Sale - \$18,900, White 2-135 CA

**MISC.** Versatile 500, 4WD, 3 pt & PTO, (81) Deutz DX 160 CA, Very Nice, M.M. Visla G1000, Long 460 Dsl, 4WD, w/loader.

Tractors & Equip Just Traded

**APRIL SPECIALS**

TRACTORS	Price
JD 5020 w/Lual., as is	\$ 4,500
JD 4020 D, P S	\$ 5,450
JD 4020 D	\$ 5,850
JD 4010 D	\$ 4,750
JD 3020 D Tricycle	\$ 4,950
JD 4620 w/Cab, Good Cond	\$ 9,500
JD 6030 Cab & Air, (175 HP), Nice	\$12,950
JD 2940 w/Hi-Lo, 2 Post R/G	\$12,500
IH 706 Gas, Tri., F.H.	\$ 3,250
IH 706 D, WFE, 3 pt	\$ 4,850
IH 1206 WFE	\$ 5,950
Case 1976, 1370 C.A.P.S., Duals	\$ 9,750
MF 1100 Diesel w/Multi-Power	\$ 3,500
COMBINES	
1973 JD 6600 D CA w/Grain Head (Needs Work)	\$ 4,750
JD 3300 G w/Cab & 244 Corn	\$ 5,400
IH '76, 915 D, Cab & Air, Turbo Hydro w/15' grain	\$ 9,850
IH 815 D C.A. Hydro w/810 Grain	\$ 8,850
MF 510 Diesel w/Cab & O.T Grain	\$ 4,440
TILLAGE EQ.	
New DMI 12' C Solid, Full Type	\$ 2,350
Ford 142, 6x Spring Reset Plow	\$ 1,750
IH 700 6x Spring Reset	\$ 1,975
MISC.	
IH 400, 6R Liq Planter	\$ 475
IH 400, 6R Dry w/No Till Planter	\$ 975
JD 410 Round Baler	\$ 2,950
IH 5 Bar 3 Pt Rake	\$ 350
New JD 8300, 16x10 DD Drill	\$ 3,500

Largest Selection Of Farm Equipment In The East