



## Virginia Weekly

Richmond, VA

Thurs., March 24, 1988

MARKETS IN REVIEW; MARCH 17-23, 1988. FEEDER STEERS AND HEIFERS IN VIRGINIA AUCTIONS SOLD STEADY THIS WEEK AS MIDWEST MARKETS WERE STEADY TO WEAK.

SLAUGHTER STEERS AND HEIF-

ERS IN VIRGINIA WERE \$2.00 TO \$6.00 HIGHER WHILE MIDWEST PRICES WERE STEADY TO 50 CENT HIGHER. THE BOXED BEEF CUT-OUT VALUE ON TUESDAY WAS \$106.19 DOWN \$3.30 FROM LAST TUESDAY.

COWS AND BULLS AT VIRGINIA MARKETS WERE STEADY TO \$3.00 HIGHER THIS WEEK AS MIDWEST PRICES WERE MOSTLY STEADY. BEEF PRODUCTION LAST WEEK

WAS 4 PERCENT ABOVE THE PREVIOUS WEEK AND 2 PERCENT ABOVE LAST YEAR AS AVERAGE WEIGHTS WERE 6 POUNDS HEAVIER THAN LAST YEAR.

VEAL AND CALF PRICES IN VIRGINIA WERE MOSTLY STEADY WHILE MIDWEST PRICES WERE MIXED \$4.00 LOWER TO \$5.00 HIGHER. PRODUCTION WAS ABOUT THE SAME AS THE PREVIOUS WEEK BUT 9 PERCENT BELOW A YEAR AGO. DRESSED WEIGHTS WERE 11 POUNDS HEAVIER THAN LAST YEAR.

LAMBS PRICES IN VIRGINIA LAST WEEK WERE STEADY TO \$3.00 HIGHER AS MIDWEST PRICES WERE

MOSTLY STEADY. PRODUCTION 2 PERCENT HIGHER THAN LAST WEEK AND 16 PERCENT HIGHER THAN LAST YEAR AS DRESSED WEIGHTS WERE THE SAME AS LAST YEAR.

MARKET HOG PRICES AT VIRGINIA MARKETS WERE STEADY TO \$1.00 HIGHER AS MIDWEST PRICES WERE FIRM TO \$1.00 HIGHER. PRICES FOR FRESH PORK CUTS FINISHED THE WEEK \$1.25 TO \$4.25 LOWER. PORK PRODUCTION WAS 3 PERCENT BELOW LAST WEEK BUT 6 PERCENT ABOVE A YEAR AGO. AVERAGE WEIGHTS WERE 2 POUND HEAVIER THAN LAST YEAR. THE RICHMOND HOG MARKET CLOSED WITH NO TREND REPORTED WITH BARROWS AND GILTS US 1-4 200-240 LBS AT \$40.00-40.50 PER CWT. TOTAL RECEIPTS FOR THE WEEK 205 HEAD.

THE SOUTHEAST VIRGINIA HOG MARKET CLOSED \$1.00 HIGHER THAN LAST WEDNESDAY WITH BARROWS AND GILTS US 1-4 200-240 LBS AT \$41.00-42.00 PER CWT. TOTAL RECEIPTS FOR THE WEEK 13,000 HEAD.

AT HARRISONBURG, LYNCHBURG AND TAPPAHANNOCK HOG PRICES WERE STEADY TO 50 CENT LOWER LAST WEDNESDAY AT \$39.00-41.50. SOWS RANGED \$28.00-30.00 AND BOARS \$21.00.

SLAUGHTER STEERS AND HEIFERS 1%, SLAUGHTER COWS 17%, SLAUGHTER BULLS 1%, SLAUGHTER CALVES AND VEALERS 1%, FEEDER CATTLE UNDER 600 LBS 67%, OVER 600 LBS 13%.

PRICE RANGES FOR VIRGINIA AUCTIONS

SLAUGHTER CATTLE STEERS; CHOICE 2-3 1000-1150 LBS 67.50-69.00 HEIFERS; CHOICE 2-3 950-1100 LBS 64.00-66.25 CHOICE 2-3 1100 LBS & OVER 64.75-68.00 UTILITY & COMMERCIAL COWS 40 00-54.50 BULLS; 1-2 900-1300 LBS 51.50-61.00 1-2 1300-1600 LBS 52.50-64.50 1-2 1600 LBS & OVER 55.00-68.00 SLAUGHTER CALVES AND VEALERS VEALERS - HIGH CHOICE AND PRIME 100-250 LBS 89.00-105.00 GOOD AND CHOICE 100-250 LBS 86.00-94.00 FEW 75.50 CALVES - GOOD AND CHOICE 250-500 LBS 70.00-85.00 SLAUGHTER LAMBS HIGH CHOICE & PRIME 95-125 LBS SPRING 84.00-85.50; WOOL 80.00-86.00 HIGH CHOICE & PRIME 95-125 LBS SHORN 82.75 SLAUGHTER HOGS US 2-4 200-250 LBS 40.00-43.00 SOWS US 1-3 300-500 LBS 28 00-37.00; 500 LBS & OVER 28.25-35.00 FEEDER CATTLE STEERS; MEDIUM 1 300-500 LBS 95.00-113.00 FEW 85.00 500-700 LBS 85.00-93.00 FEW 72.00 HEIFERS; MEDIUM 1 300-500 LBS 82 00-93.00 500-700 LBS 70 00-83.00.

NO TREND REPORTED.

SLAUGHTER COWS 139 HEAD CUTTER & BNG.UT. 1-3 41.00-49.75 BRKG.UT. & COMM. 2-4 44.00-53.75 CANNER & LOW CUTTER 1-2 40.00-47.00.

SLAUGHTER BULLS 10 HEAD - 1-2 900-1300 LBS 56.50 1-2 1300-1600 LBS 56.50-62.75 1-2 1600 LBS & OVER 57.00-62.25.

LAMBS 115 HEAD - SLAUGHTER LAMBS STEADY. HIGH CHOICE & PRIME 95-125 LBS SPRING 85.50; WOOL 81.75; SHORN 82.75 CHOICE 85-125 LBS WOOL 80.75 SLAUGHTER EWES ALL GRADES 10.00-25.00 SLAUGHTER RAMS ALL GRADES 17.00-22.50.

FEEDER CATTLE 410 HEAD - NO TRENDS REPORTED. STEERS; MEDIUM 1 SMALL 1 200-300 87.00-114.00 --- 300-400 92.00-100.00 --- 400-500 87.00-102.00 91.00 500-600 80.00-100.00 --- 600-700 76.00-84.00 --- HOLSTEIN STEERS; MED.&LARGE 1-2 300-500 LBS 74.00; 500-700 LBS 70.00.

HEIFERS; MEDIUM 1 300-400 75.00-87.00 400-500 73.00-83.50 500-600 68.00-76.00 600-700 64.00-70.00 800-900 57.50 FEEDER BULLS; MED. 1 200-300 LBS 87.00-114.00 300-500 LBS 87.00-94.00 500-700 LBS 76.00-88.00 COWS RETURNED TO FARMS 17 HEAD; M&L-1, 6-12 YR OLD 450.00-560.00 PER HEAD COWS WITH CALVES AT SIDE 35 PAIR, M&L-1, 6-10 YR OLD WITH CALVES 100-250 LBS 530.00-745.00 PER PAIR. BABY CALVES RETURNED TO FARMS 30 HEAD NEWBORN TO 4 WK OLD 60.00-170.00 PER HEAD. OVER 100 LBS 90.00-116.00 PER CWT.

## Shenandoah Valley Livestock

Harrisonburg, Va.

Sat., March 19, 1988

Report supplied by auction

FEEDER CATTLE TREND: STEERS STEADY 3.00 HIGHER.

STEERS: M&L-1 300-500 LBS. 92.00-99.00; 500-700 LBS. 75.00-97.00; 700-1000 LBS. 70.00-80.00. S-L&M&L-2 300-500 LBS. 85.00-90.00; 500-700 LBS. 73.00-87.00; 700-1000 71.00; HOLSTEIN 300-1000 LBS. 63.00-81.00.

FEEDER BULLS: M&L-1 300-500 LBS. 85.00-93.00. S-L&M&L-2 300-500 LBS. 76.00.

HEIFERS: M&L-1 300-500 LBS. 76.00-92.00; 500-700 LBS. 70.00-76.00; 700-1000 LBS. 69 00. S-L&M&L-2 500-700 LBS. 63.00-68.00.

STOCK COWS-BEEF: 445.00-605.00 BABY CALVES: 35.00-128 00.

SLAUGHTER COWS: STEADY. UTILITY & COMMERCIAL 2-4 43.00-52.50, CANNER & CUTTERS 1-3 39.00-44.00.

SLAUGHTER BULLS. 1&2 53.00-61.00; 1 AT 68.00.

LAMBS: STEADY. BLUE O HIGH CHOICE & PRIME SPRING 84.25, RED O CHOICE WOOLED 75 00; FEEDER LAMBS CHOICE 89.50-90.00; SLAUGHTER EWES 15.00-25.75, HEAD EWES 50.00-67.00.

HOGS: US 1-3 200-240 LBS 41.00; BOARS 24.50.

SLAUGHTER CALVES: GOOD & CHOICE 75 00-85.00

# Livestock market and auction news

## ATTENTION FARMERS

The New Way To Market Your Livestock

HATFIELD MOYER

PACKING CO. AND PACKING CO.  
Will Receive Hogs Will Receive Cattle

At The

**BLAIR-BEDFORD  
BUYING STATION**

RD 1 Martinsburg, Pa

**MONDAYS** - Hogs 8 AM to 11:30 AM  
Cattle & Calves 8 AM to 3 PM

**THURSDAYS** - Cattle & Calves  
8 AM to 3 PM

- No commission or yardage fees deducted from check

- Livestock weighed and paid for immediately

- You may call our office sale day for prices

**DALE R. HOOVER - Owner**

Business 814-793-3077

Residence 814-793-2657

## CRIPPLED AND DISABLED

**Cows, Steers & Bulls  
For Slaughter Under  
USDA Inspection**

Call Wayne Taylor

**717-866-6289**

**215-286-9400**

**Lebanon, Berks,  
Lancaster & Chester  
Counties**



## ATTENTION FARMERS

EVERY MONDAY

HATFIELD PACKING CO. and  
MOYER PACKING CO.

Will Receive Your  
Hogs and Cattle at the  
**DANVILLE LIVESTOCK MARKET**

RD 4, Danville, PA

- We will receive your hogs from 8 AM to 12 Noon every Monday Your hogs will be weighed and paid for immediately.

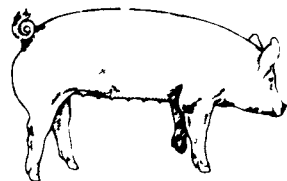
- We will also accept your sows & boars.
- Your cattle will be received from 12.30 to 5 P.M. We will either pay you for your cattle immediately or you may sell them dressed weight.

- There will not be a commission or yardage fee deducted from your check

- You may call our office Monday morning and we will be able to tell you the base price for hogs for the day.

MELVIN M. LEHMAN - Owner  
Danville Buying Station

Phone: 717-275-2880



**EMERY'S  
BUYING  
STATION**

**OPEN TO RECEIVE  
YOUR MARKET HOGS**

**AT THE GREEN DRAGON MARKET  
RD 4, EPHRATA, PA 17522  
1 MILE NORTH OF EPHRATA  
ON NORTH STATE STREET.**

**HOURS: MONDAY, TUESDAY, and  
WEDNESDAY 7:00 A.M. to 11:30 A.M.**

215-458-5677 Residence  
717-733-9648 Office

215-458-5677 Residence  
717-733-9648 Office

**YOU ARE PAID FOR YOUR  
HOGS IMMEDIATELY**

Ken & Lois Emery, Proprietors

## SWINE PRODUCTION SALES AND SERVICE

Feeding Programs  
And Services To  
Meet Your Individual  
Needs

Computerized  
Record Keeping  
System

Grain Purchasing  
And Exchange



Supplying Farm Fresh  
Feeder Pigs

Marketing and Hedging  
Services

Marketing of Genesis  
Breeding Stock

Developing Individual  
Financial Programs

Quality Products And Services - Working For YOU

419 West High Street  
Elizabethtown, PA 17022

Elizabethtown  
(717) 367-1525

PA Toll Free  
1-800-468-5524

Shippensburg  
(717) 532-7845

## OUR BUSINESS IS SERVICE TO FARMERS

Let us help you build a  
successful marketing program!

Call:

**717-761-2740**

**800-382-1356**



## Grains & Livestock

• Forward Contracting • Hedging Services

**CFS** PFA COMMODITY FUTURES SERVICE, INC.