

Crawford DHIA Holds Banquet

MEADVILLE — Nine Crawford County dairy farmers enrolled in the Pennsylvania Dairy Herd Improvement Association were recognized for outstanding production achievements at the Annual Meeting and Banquet held recently at the Meadville Community and Convention Center. The awards were all sponsored by local agri-business throughout the county.

John Tautin, Sr., Conneautville, was honored for having the high herd in butterfat production for the 1987 testing year. Tautin's 40.8 cows averaged 20,530 lbs. of milk, 790 lbs. of butterfat and 638 lbs. of protein per cow. Oswald Equipment Company, Hartstown, sponsored this award. In addition, he received production ribbons sponsored by the PA Dairymen's Association. John also received the high production Holstein herd award sponsored by Gale Dana, ABS Technician.

Wayne Stainbrook, Meadville, was recognized for having the high herd in milk and protein production. Stain-Brook Farms' 53 cows

averaged 21,680 lbs. of milk, 764 lbs. of butterfat and 683 lbs. of protein per cow. Stainbrook's plaque was sponsored by Turner's Mill, Inc., Cambridge Springs. In addition, production ribbons sponsored by the PA Dairymen's Association were awarded.

Wil-Aire Farm, Paul Manross, Saegertown, received a plaque recognizing his herd for the greatest gain in milk production for the 1987 testing year. Manross gained 2,428 lbs. of milk per cow over his 1986 production. His 53.5 cows averaged 20,599 lbs. of milk, 733 lbs. of butterfat and 645 lbs. of protein per cow. This award was sponsored by Meadville Farm Credit Service. In addition, he received production ribbons from the PA Dairymen's Association.

Robert Freyermuth, Meadville, was recognized for the second year in a row for having a somatic cell count under 100,000 average for the year. Freyermuth's herd averaged 77,000 count for the herd of 31.3 cows. A plaque presented to him was sponsored by Cochranon Veterinary Clinic and a framed

certificate sponsored by Erie-Crawford Cooperative, Saegertown.

James Davis, Spartansburg, was the recipient of a second plaque for having a somatic cell count under 100,000 average for the year. Davis' count averaged 91,000 for his 31.5 cows. Davis' award was sponsored by Penn Star Milling, Centerville. A framed certificate sponsored by Platt's Mill, Spartansburg.

Byler Brothers, Spartansburg, were recognized for having the high herd for the Brown Swiss breed. Their 11.2 cows averaged 13,722 lbs. of milk, 541 lbs. of butterfat, and 473 lbs. of protein per cow. They also milk a herd of Holstein cows. Byler's award was sponsored by Conneautville Farmer's Exchange.

The award for the high production Guernsey herd was awarded to Dolly Run Farm, John Kunz, Centerville. Kunz's 87.2 cows averaged 13,672 lbs. of milk, 594 lbs. of butterfat and 471 lbs. of protein per cow. Titusville Agway, Inc. sponsored this award.

Spruce Row Farm, Jeff and Janet Peters, Meadville, received a

plaque for the high production Jersey herd. Their 55.6 cows averaged 15,104 lbs. of milk, 669 lbs. of butterfat and 555 lbs. of protein per cow. Their award was sponsored by Cochranon Cooperative Association.

The following farms were recognized for having a cow in the herd that finished its lactation during the 1987 testing year with a lifetime production of 200,000 lbs. of milk or more. These farms were A-Jay Farms, Spartansburg; Orange Bucket Holsteins, Centerville; Queens Manor Holstein, Jamestown; Roy Douthitt, Meadville, and Robert Freyermuth, Meadville.

The following farms were recognized for having cows with a lifetime production of over 200,000 lbs. of milk; however, they were removed from the herd during the 1987 testing year. These herds are as follows: Fiely Farms, Townville; Black Pond Farms, Cochranon; Robert Marzka, Cambridge Springs; O-Darlan Farm, Linesville; Clark Duncan, Meadville; and Roy Douthitt, Meadville.

A total of 132 herds were on test for the 1987 testing year. The herds averaged 51.9 cows, averaging

15,865 lbs. of milk, 568 lbs. of butterfat and 499 lbs. of protein per cow. A total of 6,848 cows were on test for the year.

The herds are tested by seven supervisors working in Crawford County; they are: Mary Pederson, Cochranon; William Motzing, Cochranon; Christina Deeter, Titusville; Jane Kashner, Venango; Larry Peffer, Espyville; Paula Kunz, Centerville; and Jeff Peterson, Cochranon.

Crawford County DHIA President Jean Boozer, Cochranon, was Mistress of Ceremonies for the annual meeting. Regional Manager Robert Baxter and State Director Stanley Brubaker gave a short presentation on DHIA activities from the State and Regional level. The main speaker was Vernon Rose of The PA Department of Agriculture, Bureau of Marketing, Harrisburg, who spoke on "A Humorous and Light Look at Agriculture." Crawford County Dairy Princess Junia Laughery, spoke about her role as a representative of the dairy industry.

Prepared by Joseph S. Beard, County Agent



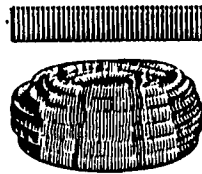
"We not only give you what we have; but what you want."

SPECIALIZING IN:

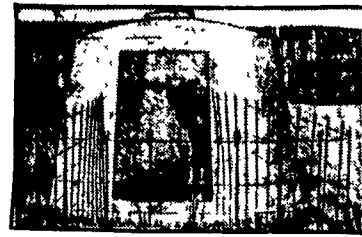
- Grain Drying
- Handling
- Storage
- Milling Equipment

At 608 E. Evergreen Rd.
Lebanon, PA 17042
(717) 274-5333

EMHERR Where We Treat You Right



4" Dia. ADS
100' Rolls \$30.00
250' Rolls \$75.00
By The Foot 35¢/Ft.
Culvert Grade Pipe (20' Lengths Only)
Available From 6" to 24" Dia.



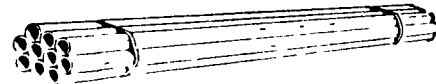
COZY CALF HUT

- High Density Polyethylene
- One Piece Construction
- 72" Diameter, 57" High
- Buckets & Brackets Available

\$179.99

CRESLINE

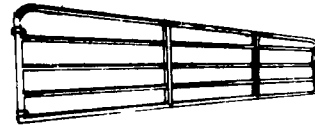
DRAIN & SEWER PIPE (10' Sections)



3" Dia. \$4.39
4" Dia. \$5.39
6" Dia. \$11.79

FARMMASTER GATES

Hot Dip Galvanized



6' \$27.99
8' \$34.99
10' \$37.99
12' \$42.99
14' \$49.99
16' \$54.99

FEED LOT PANELS

- DOUBLE DIPPED GALVANIZED**
1/4" Galv. Wire, 16' Length
34" High Hog Panel \$14.99 ea.
52" High Cattle Panel \$16.99 ea.
2"x6" Mesh Nursery Panels 34" High x 16' Length \$24.99 ea.

SAVE NOW on POLY TANKS



- 550 Gal. Poly Tank \$249
- 1050 Gal. Poly Tank \$369
- 1550 Gal. Poly Tank \$449

Your Poly Tank Headquarters
Truckloads In Stock...
All Sizes Available



Five Point

CALF MILK REPLACER
50 lb.
\$17.99



5 Gal. Pall
\$17.99
1 Gal.
\$3.89

L.F. Belarus

On The Farm Tire Service

Barn Equipment	MODEL	HP	CASH
J-STAR	250	31	\$4,595
STARLINE	Golfmaster	31	\$8,995
BUTLER	T25 Backhoe Loader	31	\$13,995
A JAMESWAY	400	57	\$7,995
C BERG	T42LB Backhoe	57	Plus Freight
T FIBERDOME	Loader 4WD	57	Less \$19,995
O FARMWAY	420 AN 4WD	57	Trade In \$9,995
R	611 C w/rollbar	75	Many \$10,995
A	505	70	More \$10,995
E	525A 4WD	70	Sizes \$13,679
S	562 4WD w/cab	70	Available \$13,995
Y	820 4WD	85	\$14,795
E	822 4WD w/cab	85	\$18,495
R	920 4WD	100	\$20,395
A	922 4WD w/cab	100	\$23,395
T	Engine for Replacement	31 Skid Loader	\$2,395
		57 Power Plant	\$2,395

ROVENDALE SUPPLY
Exit 31, Rt 180 to 180 (Old Rt 147)
to Watontown Exit (You Are There) M F 8-8
Ph. 717-538-5521 or 742-7521 Sat 8-5
Toll Free PA 1-800-232-DALE

YOUR TILLAGE HEADQUARTERS

WAVE CORPORATION USA MADE

O.E.M. Tillage Comes with Bolts & Nuts

Long Wear Rock Shares:
14" \$7.49 ea. 16" \$8.49 ea. 18" \$9.49 ea.

Disc Blades	Diameter	Gauge	Sale Price
Precision Sharp Edge	18"	11	7.99
	18"	9	8.99
	20"	9	10.99
	20"	7	13.99
	22"	7	17.99
	24"	7	20.99

Twisted Chisel Spikes
3"x1/2" x23" Right-Left
\$6.79 ea.

Shins: all in stock
Now Only **\$5.99 ea.**

FIMCO

Fimco Agri Sprayers With 3 Point Hitch Mounting, 8 Row Boom and Roller Plumbing Kit (Pump Not Included)

110 Gal. Unit.... \$699.99 8 Roller Pump..... \$79.99
200 Gal. Unit.... \$739.99 8 Roller NiResist
6 Roller Pump..... \$59.99 Pump..... \$119.99

We Carry A Complete Line Of DeLavan & Greenleaf Sprayer Accessories At Wholesale Prices

Your One Stop Hardware - Farm Supply Store

EMHERR FARM & HOME We Accept
14 Herrville Rd. Willow St., Pa. 17584 Ph. 717-464-3321
Toll Free in PA 800-732-0053

ACE Hardware