

**Public Auction Register**

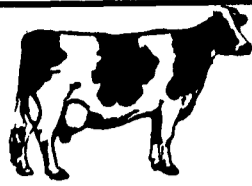
SAT. MAR. 19 - 11AM 55 Reg. Holstein Calves & Heifers Hunters Sale Barn, Rising Sun, Md. Sponsored by Cecil, Harford, Baltimore, Kent, Queen Anne and Delaware Holstein Clubs. Co-Chairman, Steve Wilson, Bob Knutsen.

SAT MAR 19 - 11AM Combine, Tractors, Farm Equipment, Truck, Household 1 mile east of Dover, Del. on Rt 8 North Little Creek Rd., 1st farm on left from Dover. B.W. Rouehl, Jr., Owner. Sales Mgr. & Auct C.T. Scuse & Sons.

SAT. MAR 19 - 11AM On the premises at the first farm out of Kleinfeltersville along Millbach road. Farm Equipment, Etc. By Earl B Horst Weik & Weik, aucts

SAT MAR. 19 - 12NOON 52 Registered Brown Swiss Farm 5 mi. northwest of Taneytown and 5 mi. northeast of Emmitsburg. At Int. of Rt. 15 and Rt 140 go north on Harney Rd 4 miles to farm on left. Pine Hill Farm, Owner. Modern Associates, Sales Manager.

SAT. MAR. 19 - 1PM Farm for sale in the beautiful "White Deer Valley" in Lycoming County, near the Village of Elmsport, Pa. by Donald R. Wright, Kenneth D Young, auct.



**WEAVER HOLSTEIN DISPERSAL**

**SAT., MARCH 19th**  
At 11:30 A.M.

1 mile from Wysox, Pa. on 5th Ave. Turn off Rt. #187 1/4 mile North of Rt. #6 & Rt. #187 Intersection. The farm behind the ball field. 2 miles to Towanda, 6 1/2 from Rome. Bradford Co. Arrows!

**60 Registered Holsteins**

52 Reg. 8 ID & Grades. Sire Power & Eastern Breeding. 46 mature cows, 3 bred hfrs., 10 open hfrs., 1 Jersey service bull. 6 red & whites reg w/Holstein assn. 1 a Triple Threat. These cows & hfrs. the daughters of Board Chairman, Valiant, Chief, Lone Ranger, Wiseman, Starfire, Dellfield Standout, Berlin, etc. Many fresh in last 6-8 weeks. Many due March & April. 23 due June thru Sept. DHIA records to 18,000 lbs. Somatic cell 117,000. All vaccinated, dehorned, shorts, vet examined & tested for interstate.

**PRODUCE**

Corn Silage 16x28 ft. Hay approximately 500 bale bright early cut.

**TERMS: Cash or good check.**

**Owners**

**HAROLD & JEAN WEAVER**

Jlm Adriance, Auctioneer AU4L  
Montrose, 278-1574

**PUBLIC SALE**

**TUESDAY, MARCH 29, 1988**  
9:30 A.M.

Located three miles east of Lancaster, 1/4 mile West of Locust Grove Mennonite School. Just south of Route 340 at 133 Buckwalter Road, East Lampeter Twp., Lancaster, Pa.

**LIVESTOCK**

Thirty-four head of Holstein Dairy cows, in all stages of production. Some heifers. All T.B. & Blood tested.

1 Pair Sorrel horses, ten yrs. old; 1 pair Gray horses; 1 pair sorrel mules; 1 odd mule. All good workers.

**FARM EQUIPMENT**

Case "930" Comfort King tractor with turbo charge; New Holland #273 hay liner, overhauled Wisconsin engine and super sweep Pequea hay tedder, overhauled; New Holland 256 hay rake.

W.C. Rotary scythe with 1 yr. old V.M. diesel; Mayrath 28' elevator; McD 6' mower; two flat bed wagons; Gehl "600" recutter, with hopper and conveyor.

McD 24 disc harrow; two bottom 14" trailer plow; Wiard 106 walking plow; two spring harrows; three cultipackers; McD riding cultivator; single bottom trailer plow.

Roy Stoltzfus built liquid manure spreader; J & M gravity bin on gears; mechanical transplanter; two horse weeder; three foretrucks; Lanc. Silo built drag elevator.

Buzz saw; 1 horse cultivator; three wheel livestock transport trailer; portable 48" barn fan with engine; two knapsack sprayers with engines; applicator for hay spoilage prevention; Black Hawk corn planter; wire roller & wire.

Oliver 8' grain & fertilizer drill; Bradley 3 pt. 6' bar mower; John Deere 3 pt. 4 bottom 14" plow; 3 pt. hook-up corn planter; International silage wagon on 8 ton gear; Van Brundt 8' grain and fertilizer drill; John Deere 9' disc.

Tobacco ladders; 8000 tobacco lath; three Minnich tobacco presses; old work bench top, wooden vise; drill press; tobacco shears and spears; two hyd pumps; torch.

Two Glick built utility sheds 8'x14'; 40 planks 10"x2"x14'; 25 planks 6"x2"x14'.

1, 2, 3, 4, 5, 6 horse hitches; collars; bridles; lines; 8 sets of front gears; 1 Yankee harness; bolt bin; milk cans.

**CORN FODDER**

**DAIRYING EQUIPMENT** - Mueller 600 gallon bulk tank; three Westfalia milking units; Bender washer; Lister HRD diesel; Surge 75T milker pump; Curtis 5 h.p. compressor, 1 year old; Lehigh compressor; A.O. Smith 30 gallon water heater; stainless strainers, buckets and tubs; cow trainers; round hay rack; 4 calf hutches; Farmec fencer, feed and ensilage carts.

Some household goods.

**JONATHAN E. & LIZZIE ANN FISHER OWNERS**

Sale at 9:30 A.M.

DIFFENBACHS AUCTIONEERS-- 393-4464

Abe- 225L, Abe Jr.- 1101L, Alan- 2258L, David- 2324L

Roger Floyd, Clerk

**PUBLIC AUCTION**

(Ill health prompts this dispersal)  
On farm 3 1/2 mls. W. of Ringtown, PA.  
**Saturday, April 9, 1988**  
10 a.m.

5 Tractors, Trucks, MF 300 Combine, Potato Equipment, General Farm Equipment, Frick Sawmill, etc.

Owner:

**R. ELDON HETHERINGTON**

Conducted by: Fraley Auction Co.  
717-546-6907  
AU1194-L

Watch for complete listing

**PUBLIC AUCTION**

**FARM MACHINERY, BUTCHERING EQUIPMENT & HOUSEHOLD GOODS**

**FRIDAY, MARCH 25, 1988**  
9:00 A.M.

Location: 12 miles south of Lancaster, along Rt. 222, in the village of Hessdale (1615 Beaver Valley Pike), or 5 miles north of Quarryville along Rt. 222.

**FARM MACHINERY:** 2010 JD tractor w/ loader, top link, JD draw bar; JD M tractor w/plow, cultivators, row marker, sawbuck, and snow plow; 201 NI manure spreader; McC Deering disc; Cultipacker; NH 450 3-point mower; Shovel harrow; Log chains; 6 ft. Ford rotary mower; Gates; 2 sleighs; Bumper for 8N Ford tractor; Ford bucket; Miles AC welder; One Way Cylinder; Ropes; 12-ton Hyd. press; Heavy duty block & tackle; Lg. metal tool box; Feed chests; 4 feed troughs; Hay rack; 10 ft. roller elevator; 8 ft. overhead door; Old barn boards; Planks; Work bench; Bench vise; Ext. ladders; Fairbanks platform scales; Water pump on frame w/Briggs & Stratton engine; Fodder cutter; One hole corn shell-er; Fiberglass roofing; Metal scaffolding; Painter swing, complete; Oak, pine, cherry & chestnut lumber; Square logs 10x11 1/2"; Approx. 4 to 5 tons Alfalfa Hay; Corn; Corn fodder.

**BUTCHERING EQUIPMENT:** Kettle; Scalding trough; 200 lb. Toledo meat mixer; Air powered stuffer; Beef & pork rollers; Tree hooks on rollers; S-hooks, lg. & sm.; 5 ft. stainless steel cutting table; Steel knives; Stainless & alum. tubs; Lard press; Berkel auto. meat slicer; Beef scribes; Cleaver; Sausage stuffer; Track scales; Beef skinning buck; Metal beef gamble; Trammel; Beef leg chains; Kettle stove, extra top; 2 track switches; Brunnerville butcher furnace.

**HOUSEHOLD GOODS:** White pine poster bed; Single bed, complete; Washstand; Kneehole desk; Victorian sofa; Cane swivel chair; Odd chairs; Oak bookshelf; Stereo; High chair; Sleds; Yardsticks; Mirrors; Check writer; L.C. Smith typewriter; 3 wooden wine barrels; Antique sifter & grinder; Hanging scales; Peal 24" long, from bakery in Strasburg; Coal oil burner; Ashley stove; 2-ton central air conditioner; Electric 5 ft. wall heater; Wooden storm windows & doors; Window sash; Baseboard heat element; Shutters; Alum. siding; Floor & ceiling tile; Ceramic tile cutter; Ceramic type fixtures; Chrome edging; Formica; Rubber & vinyl cove base; Asbestos cutter; Railroad spikes; Tree trimmer; Fluorescent lights; Lawn roller & spreader. **Items too numerous to mention. NO OUT OF STATE CHECKS UNLESS KNOWN BY OWNER OR AUCTIONEERS. Lunch available.**

**TERMS BY**

**JERE L. & JANE E. GROFF**

Auction conducted by:  
LLOYD KREIDER, AU000513L,  
717-786-3394,  
RANDAL KLINE, ROY GOOD, GARY SHIRK



**PUBLIC SALE**

**OF OVER 400 COLLECTOR'S PLATES AND COINS**  
**BRICKERVILLE FIRE HALL**  
**WEDNESDAY EVENING,**  
**MARCH 16, 1988**

At 6 P.M. Coins at 8 P.M.

Sale to be held at Brickerville Fire Hall located just off Rt. 322 (approx. 8 mi. W. of Ephrata), Brickerville, Lancaster Co., Pa.

**OVER 400 COLLECTOR'S PLATES** — MOST IN ORIGINAL BOXES; Schuman Bavaria; Porsgrund Norway; Porsgrund China; Berlin China; Royal Copenhagen; Kaiser Porcelain; Bing & Grundahl; Santa Clara; Svend Jensen of Denmark; Orrefors of Sweden — "Historic Churches of World"; Silver City — Sterling Silver on Crystal; Portmeirion Staffordshire; Wedgwood; Georg Jensen; Andrew Wyeth; Schmid Bavaria; Gorham; Goebel; Reed & Barton Damascene; Furst; Haviland Limoges France; Marzi & Remy; Royale Germany.

**COINS** — Over 350 Silver Dollars; Over 150 Proof And Mint Sets.

**Terms By:**

**E.S.P.**

**Auctioneers:**

T. Glenn Horst & Sons AU438L  
859-1331 — 738-1245

**PUBLIC SALE**

**TRACTORS, FARM MACHINERY AND EQUIPMENT**

We, the undersigned having sold our farm and discontinuing farming, will sell at Public Auction on premises located 2 miles N.E. of Brunswick along Petersville Rd., Frederick County, Md.

**FRIDAY, MARCH 18, 1988**  
Beginning at 10:30 A.M.  
**4 TRACTORS**

Oliver 1365 diesel with 1510 front end loader; MM model 670 diesel, good rubber; Oliver model 77 (gas), good rubber; Oliver model 66 (gas), good rubber; JD 400 grinder-mixer, 12 ft. Transport Taylan Way heavy disc, 14 ft. bush hog, model 160 rotary mower, NI model 213 spreader, Fox 2N row custom model 90 chopper, model 273 NH baler with kicker, JD 14 ft. baler, NI model 299 MO conditioner, MM 6 30 in. row no till planter, Bearcat flail chopper, NI 2 row corn picker model 325 30 in. row, JD 3 gang 14 in. 3 pt. plow, 2 gang JD trailer plow, Cabey 5000 self-unloading wagon, IHC self-unloading wagon, JD 125 chuck wagon, JD 122 chuck wagon, Busboy field bale loader, 45 ft. NI hay elevator, 30 ft. ruth hay elevator, JD 200 fiberglass tank field sprayer with centrifugal pump.

Gyro fertilizer spreader, 10-7JD grain drill, JD hay rake, Colwell tractor post hole digger, 5 flat bed wagons, 1 kick bed wagon, tractor mounted seed sower, set of JD cultivators for A or B, 3 pt. mounted rear tractor platform, rear tractor wheel corn shield, JD 3020 roll guard, 2-4 in. augers and motors, 10 and 30 ft.; Davis grain crimper, with 5 h.p. G.E. sealed motor. 1963 1 ton Chevy truck, as is; 6 10 ft. pipe gates, 18 ft. pipe gates, several wooden gates, Walder automatic model 103 cattle catcher, 2-200 gal. galvanized water tanks, DeLaval milkers, pump and pipeline and equipment from a 4-unit milking parlor, milker washer, wash up tank, hot water heater, etc.

Approx. 3000 bales of mixed alfalfa to be sold in 3 separate lots.

**TERMS OF SALE: CASH and no property to be removed until settled for. NOT RESPONSIBLE FOR ACCIDENTS ON PREMISES.**

**MR. & MRS. WILLIAM WATKINS**

Owners  
3825B Petersville Rd.  
Brunswick, Md.  
Phone: 301-834-9627

Willowdale Auction Co.

Dan Poole, Walter Gordon, Aucts.

Joseph Gordon, Susan Kelley, Clerks

Phone 301-473-8100

Food Will Be Available