

Produce Markets

Phila. Vegetable Market

Wed., March 9, 1988

PARTLY CLOUDY 34-56.
ARTICHOKES CA carton fair appearance 36s 15.00-16.00 48s 15.00 60s 13.00.
ASPARAGUS LOWER CA 30-lb crate & carton large 25.00 standard 24.00-25.00 small 20.00 Long Green jumbo & extra-large 26.00 large 26.00-28.00 standard 26.00 15-lb crate & carton jumbo 12.00-13.00 extra large few 15.00 MEXICO 30-lb crate large 25.00-26.00 standard 22.00-23.00 small 20.00.
BEANS SUPPLIES LIGHT FL various bushel containers Round green type hand-picked 18.00-20.00 mostly 18.00.
BEETS TX carton bunched 12s 500 topped 25-lb film bags 500.
BROCCOLI SLIGHTLY LOWER carton bunched CA 14s 600-700 18s 600-750 some including one label 8-850 AZ 14s & 18s 600 MEXICO 14s 5-550.
CABBAGE SLIGHTLY HIGHER 1-3/4 bushel crate & carton medium green unless otherwise stated FL 550-650 mostly 6-650 Red 800 Savoy type 10.00 large 800 TX 625 NY 50-lb sacks large 425-450 mostly 450 Red 50-lb sacks 600.
CARROTS SLIGHTLY HIGHER 48-1 lb film bags in film sacks FL medium 650-700 mostly 700 50-lb sacks loose jumbo CA 6-650 FL 550-600 mostly 600.
CAULIFLOWER SLIGHTLY HIGHER carton film wrapped CA 9s few 900 12s few 10.00-11.00 AZ 9s 650-700 12s 700-800 16s few 600 FL 12s 700.
CELERY ABOUT STEADY CA carton 2 dozen 950-11.00 2-1/2 dozen 900 3-4 dozen few 900 FL crate & carton 2-1/2 dozen few 900-10.00 3 dozen 900 TX carton 2 dozen 900.
CHINESE CABBAGE FL celery crate few 800.
CORN SUPPLIES LIGHT FL wire-bound crate approximately 4-1/2 dozen Yellow 900 White few 18.00.
CUCUMBERS SUPPLIES LIGHT 1-1/9 bushel crates & cartons Waxed medium unless otherwise stated MEXICO 20.00 fair quality 18.00-19.00 mostly 19.00.
EGGPLANT Supplies insufficient to quote.
ENDIVE STEADY FL 1-1/9 bushel crate 500-600 mostly 550-600.
ESCAROLE ABOUT STEADY FL

1-1/9 bushel crate 6-650.
GREENS ABOUT STEADY crate & carton approximately 1-1/2 bushel bunched unless otherwise stated GA Col-lards 6-650 Mustard & Kale 650-700 Rape 700 TX 24s Mustard & Turnip Tops 7-750 mostly 700 Kale 700 Swiss Chard 700 CA 24s Red Kale 14.00 Swiss Chard Red 10.00 20-lb carton Broccoli Rabe loose one label 16.00 MEXICO 20-lb carton Broccoli Rabe 15.00-17.00 mostly 15.00.
LEEK ABOUT STEADY carton bunched 12s FL 14.00 MEXICO few 12.00.
LETTUCE-ICEBERG HIGHER carton 24s unless otherwise stated CA 16.00-17.00 AZ 16.00-17.00 mostly 17.00 film wrapped 18.00 30s 17.00 FL 14.00.
LETTUCE-ROMAINE ABOUT STEADY CA 24s crate 11.00 carton 750-850 AZ 24s carton 850-900.
LETTUCE-OTHERS Big Boston carton 24s CA 7-750 AZ 600-700 mostly 700 Bibb Too few sales to quote Leaf CA carton 24s 500-600 mostly 500 Red 500-700 AZ & MEXICO carton 24s 500-600 Red 500-600.
LETTUCE-PROCESSING No supplies.
OKRA Supplies insufficient to quote.
ONIONS-GREEN SLIGHTLY LOWER carton bunched 48s MEXICO 500-650 mostly 500-600.
PARSLEY LOWER bunched 5 dozen Curly unless otherwise stated FL crate 800-10.00 Plain 800 TX crate 800 Plain 800 CA carton 950.
PEAS-GREEN Supplies insufficient to quote.
PEAS-SOUTHERN No Supplies.
PEAS-SUGAR ABOUT STEADY 10-lb carton per lb CA 100 GUATEMALA 110-120 10-lb crate per lb MEXICO 80-90.
PEPPERS ABOUT STEADY 1-1/9 bushel crate & carton California Wonder type green unless otherwise stated FL large 600-700 medium 500-600 mostly 500 small 400-500 mostly 400 Mixed Red large 400-500 Red large 13.00-14.00 mostly 13.00 medium 10.00 MEXICO large 600.
RADISHES SLIGHTLY LOWER carton Red 30-6 oz film bags unless otherwise stated FL 3-325 MEXICO bunched 24s 500-600 mostly 600.
SPINACH ABOUT STEADY Savoy type TX bushel basket 800 FL 1-1/2 bushel carton 700 GA 1-1/2 bushel crate 700 MEXICO carton bunched 24s 600-700 flat type carton bunched 24s CA 7-750 MEXICO 600-700.
SQUASH LOWER FL 1/2 bushel carton

Zucchini small-medium 12.00 Yellow Straightneck Supplies insufficient to quote MEXICO lug Zucchini medium one lot 18.00.
SWEET POTATOES 50-lb carton Jewel type cured NC 14.00 DE fair appearance 800-900.
TOMATOES ABOUT STEADY 25-lb carton Pink to light Red 85% or better US#1 quality unless otherwise stated Sales by Repackers FL 5x6s one lot 10.00 6x6s one lot 900 6x7s one lot 800 Sales by Others FL 5x6s 750-800 one lot 900 Red 700 6x6s 650-700 mostly 700 one lot 800 Red 600 6x7s 650 fair quality 5x6s 550-700 6x6s 600 6x7s few 600 MEXICO 2-layer flat 4x5s 600-700 5x5s 500-600 5x6s 4-450 Cherry type 12-1 pint flat FL 6-650 MEXICO including large 500 one label 900.
TURNIPS topped NJ 25-lb mesh sacks medium 600 1245.

57.00-67.00; **HOLSTEIN & HOLSTEIN X STEERS**- 400-600 LBS. 63.00-71.50; 600-800 LBS. 60.00-65.00. **HEIFERS**- 300-400 LBS. 70.00-82.00; 400-600 LBS. 68.00-78.00; 600-800 LBS. 58.00-64.00. **BULLS**- 400-600 LBS. 70.00-78.00; 600-800 LBS. 60.00-64.00. **DAIRY REPLACEMENTS**- **SPRINGING HEIFERS**- 500.00-660.00; **HEIFERS**- 300-500 LBS. 74.00-79.00; 500-700 LBS. 63.00-74.00; **SERVICE BULLS**- 1 **POLLED HEREFORD**; 875 LBS. @ 65.00. **PIGS & SHOATS**- 20-30 LBS. 25.00-38.00; 30-50 LBS. 35.00-50.00. **BY THE LB.**- 120-170 LBS. 40.00-43.00. **SLAUGHTER HOGS**- 215-245 LBS. 41.25-42.50; 260-270 LBS. 38.75-39.50; 1 330 LBS. AT 38.00. **SOWS**- 300-600 LBS. 32.00-34.00; **THIN** 25 00-30.00. **BOARS**- 27.75.

90.00-136.00; **Holstein Heifers** 90/125 lbs. 98.00-123.00. **Beef cross bulls & heifers** 80/135 lbs. 95.00-130.00.
HOGS 362...Barrows and gilts \$1 to \$1.50 lower. US No. 1-2 225-260 lbs. 43.10-44.60, few small lots 46.50, 1-3 220/265 lbs. 41.85-43.25, 2-3 235/290 lbs. 39.50-40.50, 1-3 180/200 lbs. 38.00-39.50. **Sows** \$4 higher. US No. 1-3 345/545 lbs. 40.00-44, Medium 275/390 lbs. 28.50-36.50. **Boars** 28.00-31.75.
FEEDER PIGS 11...US 1-3 20-35 lbs. feeder pigs 22.00-42.00 --- all per head. **SHEEP** 53...High Choice & Prime 60/85 lbs. new crop lambs 91.00-92.00; Good 70/85 lbs. feeder lambs 70.00-78.00. Few Slaughter ewes 16.00-40.00.
GOATS 27...Large 41.00-50.00, Medium 27.00-39.00, Kids 17.00-24.00 --- all per head.

Four States Livestock

Hagerstown, Md.
 Wed., March 9, 1988

Report supplied by Auction

SLAUGHTER: FED STEERS- CHOICE FEW TO 70.25; **SELECT** 62.00-66.00; **STANDARD** 52.00-60.00. **FED HEIFERS- LO CHOICE FEW** 63.50, **SELECT** 55.00-59.00. **COWS- HIGH YIELD** 49.00-52.00; **UTILITY-COMMERCIAL** 44.00-49.00; **CANNER-CUTTER** 40.00-44.00; **SHELLY** 40.00-DOWN. **BULLS- MD.** 53.00-55.00. **VEAL CALVES: LO CHOICE** TO 103 00; **GOOD** 89.00-93.00; **STANDARD CULLS** 80-100 LB. 85.00-96.00; 60-80 LB. 75.00-85.00; **HOLSTEIN BULLS-** 95-120 LBS. 110.00-140.00; 90 LBS. 90.00-110.00. **HOLSTEIN HFRS.** 95-120 LBS. TO 151.00. **BEEF X-** 100.00-118.00. **LAMBS- CHOICE** 90-100 LBS 81.00-86.00. **GOATS-** 21.00-47.00
STOCKER- STEERS MEDIUM & LARGE FRAME. 300-500 LBS. 80.00-85.00; 400-600 LBS. 77.00-83.00; 600-800 LBS. 70.00-80.00; 800-1000 LBS.

New Wilmington Livestock Auction

N. Wilmington, PA
 Monday, March 7, 1988

CATTLE 268.PDA...Compared with last Monday's market: Slaughter Cows mostly \$1 lower. Few Choice sl. steers 66.50-68, Select 63.50-66.75, Standard 55.00-61.50, few Utility 53.00-55.00. Select sl. heifer, individual 60.50, Standard 52.50-58.00. Breaking Utility & Commercial sl. cows 48.00-50.75, few Low Dressing down to 46.00, Cutter & Boning Utility 44.50-49.50, few Low Dressing down to 43.00, Canner & Low Cutter 38.00-45, Shells down to 30.00. Yield Grade No. 1-2 1140/2190 lbs. sl. bulls 53.00-60.00. Feeder Cattle: Few Medium Frame No. 1, 250/400 lbs. steers 82.00-85, 1-2, 385/585 lbs. 66.00-77, Large #2, 570/930 lbs. holsteins 54.00-64.00. Medium Frame No. 1, 320/555 lbs. heifers 64.00-74, Large 1-2, 575/800 lbs. 55.50-63.00.

CALVES 357...Prime vealer, individual 130.00, couple Choice 112.00&127, few Good 90.00-105, Standard & Good 90/120 lbs. 80.00-91, 65/85 lbs. 70.00-87, lot Utility 59 lbs. 57.00, lot 47 lbs. 28.00. Farm Calves: Holstein Bulls 90/135 lbs.

Special Sale Work Horses, Driving Horses & Mules

New Holland Sales Stables
 New Holland, PA

Friday, Mar. 4, 1988

Report Supplied by Auction

263 HEAD.
 2 LD. WORK HORSES VA, PAIRS 1750.00-2300.00, SINGLES 775.00-1150.00.
LOAD MI WORK P. 1275.00-1850, S. 500.00-850.00; **LOAD VA WORK, P.** 1700.00-2100.00; S. 850.00-985.00, LD. TN WORK, P. 1675.00-1825.00; S. 600.00-925.00; **TN MULES, P** 1475.00-1800.00, S. 700.00-1550.00.
DRIVING HORSES, NJ 525.00-650.00; OH 610.00-975.00; PA 625.00-1100.00.
LOCAL DRIVING, 550.00-1125.00; **LOCAL WORK P.** 1700.00-2200.00, S. 600.00-1200.00.
MULES, PRS. 1100.00-1650.00; S. 600.00-800.00.

ATTENTION FARMERS;

STOP SHARING YOUR INTEREST WITH THE IRS.

I'd like to invest \$5000 \$25,000
 \$50,000 \$--0,000 in a tax-deferred SPDA.

MONEY FINANCIAL SERVICES

A Single Premium Deferred Annuity from MONY Financial Services give you • Tax-deferred interest • Competitive interest rates • Principal guaranteed against market loss. • Full year guaranteed interest. And if that's not enough our SPDA doesn't have an upfront sales charge. Call MONY Financial Services now to find out our latest interest rates.

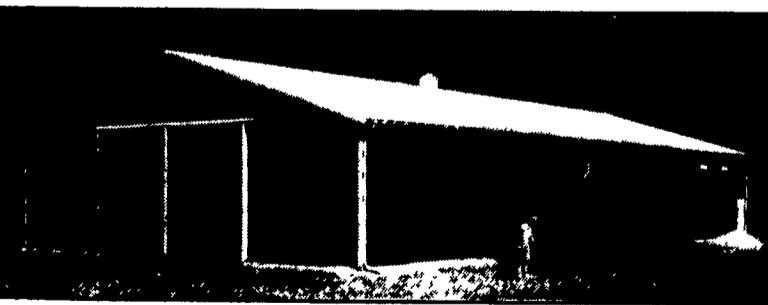
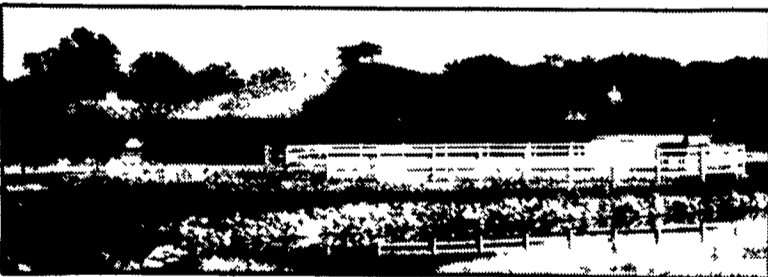


Donald L. Cromer
 1794 Oregon Pike, Lancaster
 (717) 569-5700

MORTON BUILDINGS

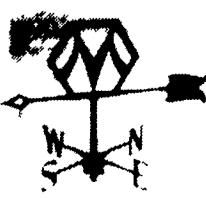
Since 1903

- Horse Barns
- Riding Arenas
- Garages
- Warehouses
- Offices
- Shops
- Equipment Storage
- Aircraft Hangars



For literature call Morton, IL
 800/447-7436

MORTON BUILDINGS, INC.



WEATHER VANE with every building purchased

MORTON BUILDINGS Call or write today to arrange to see and hear more reasons why you should own a Morton Building

3368 York Rd.
 Gettysburg, PA 17325.... Ph. 717/624-3331
 Box 126
 Phillipsburg, NJ 08865... Ph. 201/454-7900

Many Hearing Problems Can Be Helped.

Chicago, IL—A free offer of special interest to those who hear but do not understand words has been announced by Beltone. A non-operating model of the most popular canal hearing aid in America today will be given absolutely free to anyone who sends for this free model now.

It's yours for the asking, so send for it now. It is not a real hearing aid, but it will show you how tiny hearing help can be. The actual aid weighs less than an eighth of an ounce, and it fits completely into the ear canal.

These models are free, so we suggest you write for yours now. Again, we repeat, there is no cost, and certainly no obligation. Although a hearing aid may not help everyone, more and more people with hearing losses are being helped. For your free sample, send your name, address and phone number today to: Department 82605, Beltone Electronics Corporation, 4201 West Victoria Street, Chicago, Illinois 60646.



SCHLESSMAN'S

HYBRID CORN
 805 - 711 - 642

NORTH COAST SEED CORN

2080 - 96 Day

2520 - 116 Day

2340 - 111 Day

Top Yields At Hampster, MD - 20 Varieties Of Competition

2515 - 114 Day

Top Yields At Quarryville, PA - 201.95 versus 191.5 for Pioneer

ALFALFAS

Boys 84 VWAP Brand
 Boys 78AT Brand

Boys Wet Foot Brand
 Erie and others

OATS

Ogle Porter

FERTILIZER CHEMICALS
BALER TWINE

SOYBEANS

S3135's Pella
 Waves Williams

Wholesale & Retail

BOYDELL FARMS

302 Jona Rd
 Lebanon, PA 17042

(717) 272-8943

NORTH COAST SEED CO.

1705 W. 1st St
 Millersburg, PA

(419) 499-2190