

# Lancaster Farming

VOL. 33 No. 18      Lancaster Farming, Saturday, March 12, 1988      Six Sections      \$8.50 Per Year

## Opening Holstein Herdbook Debated

BY KARL BERGER  
Special Correspondent

If a cow looks like a registered Holstein, produces milk like a registered Holstein and, most importantly, is bred like a registered Holstein, is it a registered Holstein?

That's the question Holstein breeders across the country are asking themselves as a result of a controversial proposal to allow at least some grade Holsteins to achieve registered status in the herdbook of the nationwide Holstein Association.

The issue of "national identification," as it's been labelled by

Holstein officials, is sparking heated discussions at regional, state and county meetings in the Mid-Atlantic area. It was the major topic at the Holstein Winter Forum in Culpeper, Va., March 7-8 and is expected to highlight the agenda at the winter forum for Pennsylvania and New Jersey breeders March 14-15.

These meetings, part of a series of winter forums the association conducts each year for members in various parts of the country, have become a kind of primary vote for proponents of the grade-up plan. Reportedly, feedback from these meetings will determine whether

the association's board of directors puts the issue to a vote of the directors attending this year's national convention in San Diego.

As proposed by the "Holstein Identification Task Force" — a committee of 10 members appointed in June 1987 by Holstein Association president Kip Herzog — the grading-up process would involve four main steps.

Like the similar "genetic recovery" programs already in place among Jersey and Guernsey breeders, the Holstein plan would start with a grade cow that is manifestly Holstein in appearance, but whose

(Turn to Page A20)

## Dairy Of Distinction Seeks Applicants

WILLIAMSPORT — The Northeast's most beautiful dairy farms are invited to compete for this year's Dairy of Distinction awards. Dairy of Distinction applications are now available for the states of Pennsylvania, New York and New Jersey.

The purpose of the Dairy of Distinction program is to recognize attractive farmsteads. Farms are judged on neatness, good maintenance, and roadside appearance. The program is based on the theory that attractive farms can increase consumer confidence in the quality of dairy products.

All dairy farms producing milk for sale are qualified to apply for the award. Applications are available at all county cooperative

(USE APPLICATION  
ON PAGE F-3)

extension offices, local farm publications, as well as through the American Dairy Association and Dairy Council (ADADC).

A number of awards will be made during 1988. The states of Pennsylvania and New York have

(Turn to Page A20)



Bedford County's Outstanding Holstein Youth, Saran Ann Baker of Bedford RD 4, is a young woman of many interests and talents. She's studying courses in floriculture at the Bedford-Everett Area Vocational-Technical School and designed the arrangement on the table behind her. (See Story Page A-22)

## Multi-County Agents Setting Up To Aid Pennsylvanians

BY LISA RISSER  
SCHAEFFERSTOWN — The wheels set in motion last summer with the \$5-million on-going appropriation from the Pennsylvania legislature to Penn State's extension system are beginning to pick up speed. Multi-county agents, a direct result of the funding, are being established around the state with a concentration of

manpower in the south-eastern portion, Alletta Schadler told attendees of the 71st Lebanon County Extension Meeting.

"We're excited about the program. The concept of multi-county agents and teamwork is important," commented Schadler, who is the Lebanon County Extension Director on loan to the Berks County Regional Center and is responsible for helping to locate people to fill the new positions.

The appropriation, which was earmarked for upgrading the existing extension program as well as increasing staff, allows the extension

(Turn to Page A19)

## Egg Cholesterol May Be Lower Than Reported

BY  
EVERETT NEWSWANGER  
Managing Editor  
LANCASTER — The new research program funded by the American Egg Board and managed by United Egg Producers has some exciting implications for the egg industry, according to Cathv McCharen, Vice-President, Egg Nutrition Center, Washington, DC. Speaking at the Poultry Prog-

(Turn to Page A34)



Mindy Johnson, Damascus, Maryland, (center) was crowned the 1988 Maryland State Jersey Queen at the Maryland Jersey Cattle Club's 67th Annual Meeting held in New Midway last Saturday. Crowning Mindy is last year's Queen Tonna Caple (right). Esther Hoffman, Queen Contest coordinator (left), helps with her banner.

## Goal: Put Maryland Jerseys On Map

GINGER SECRIST MYERS  
Adams Co. Correspondent  
NEW MIDWAY, MD. — "Our

goal is to put Maryland Jerseys on the map. This includes excellence not only in the showing, but also showing that our cows can be profitable." This was the challenge issued by Maryland Jersey Cattle Club President James Stonesifer in

## Bergland To Speak At Lancaster Ag Energy Conference

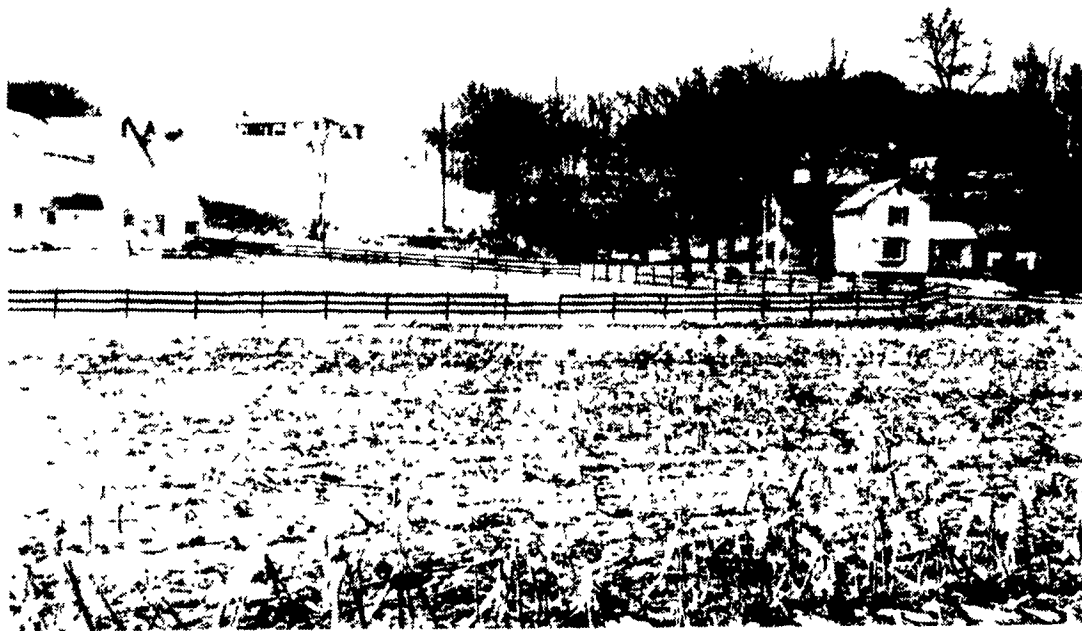
Former U.S. Agriculture Secretary Robert Bergland will be the keynote speaker at a one-day conference on energy in agriculture Monday, March 14 at the Lancaster County Home and Farm Center. Starting time is 10 a.m.

Bergland, the executive vice president and general manager of the National Rural Electric Cooperative Association (NRECA), will participate in the conference aimed at the Pennsylvania

(Turn to Page A35)

his opening remarks before the 67th Annual Meeting of the Maryland Jersey Cattle Club. The day-

(Turn to Page A21)



Yules Pride Farm in Columbia County. (See story Page A-28)