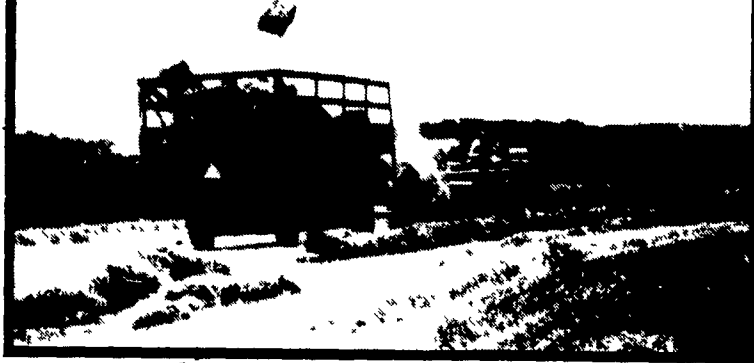


HAY MARKETS



Pa. Grain

Monday, Feb. 29, 1988

Report supplied by PDA

COMPARED WITH LAST MONDAY'S MARKET FOR SOUTHEASTERN, CENTRAL AND SOUTH CENTRAL PA.: CORN UNEVENLY STEADY, INSTANCES STRONGER; WHEAT AND BARLEY STEADY TO .10 LOWER; OATS AND SOYBEANS UNEVENLY STEADY; EAR CORN STEADY TO STRONG.

SOUTHEASTERN PENNSYLVANIA

CORN NO. 2-Y RANGE 2.10-2.35, AVERAGE 2.25, *CONTRACT FOR HARVEST 2.07-2.34; @WHEAT NO. 2 RANGE 3.10-3.35, AVERAGE 3.24, *CONTRACT FOR HARVEST 3.19-3.39; BARLEY NO. 3 RANGE 1.70-1.90, FEW REPORTED 1.40, AVERAGE 1.73, *CONTRACT FOR HARVEST 1.10-1.50; OATS NO. 2 RANGE 2.10-2.30, AVERAGE 2.17, *CONTRACT FOR HARVEST 1.20; SOYBEANS NO. 1 RANGE 6.10-6.25, AVERAGE 6.18, *CONTRACT FOR HARVEST 6.25-6.31; *GR. SORGHUM #2 RANGE 1.90, AVERAGE 1.90, *CONTRACT FOR HARVEST 1.90; #EAR CORN RANGE 55.00-78.00, AVERAGE 64.85.

CENTRAL PENNSYLVANIA

CORN NO. 2-Y RANGE 2.00-2.30, AVERAGE 2.15; @WHEAT NO. 2 RANGE 2.80-3.20, AVERAGE 2.94,

BARLEY NO. 3 RANGE 1.30-1.80, AVERAGE 1.57; OATS NO. 2 RANGE 1.80-2.15, AVERAGE 1.94; SOYBEANS NO. 1 RANGE 5.60-6.25, AVERAGE 6.01; *GR. SORGHUM #2 RANGE 1.90, AVERAGE 1.90; #EAR CORN RANGE 52.00-60.00, FEW REPORTED 70.00, AVERAGE 58.90.

SOUTH CENTRAL PENNSYLVANIA

CORN NO. 2-Y RANGE 2.10-2.32, AVERAGE 2.23; @WHEAT NO. 2 RANGE 2.90-3.25, FEW REPORTED 2.60, AVERAGE 2.96; BARLEY NO. 3 RANGE 1.35-1.85, AVERAGE 1.63; OATS NO. 2 RANGE 1.95-2.20, FEW REPORTED 1.70, AVERAGE 2.03; *SOYBEANS NO. 1 RANGE 5.60-6.10, AVERAGE 5.85; *EAR CORN RANGE 60.00-80.00, AVERAGE 69.14.

WESTERN PENNSYLVANIA

CORN NO. 2-Y RANGE 1.90-2.15, AVERAGE 2.01; @WHEAT NO. 2 RANGE 2.40-3.05, AVERAGE 2.82; OATS NO. 2 RANGE 1.90-2.10, FEW REPORTED 1.75, AVERAGE 1.96; SOYBEANS NO. 1 RANGE 5.90, AVERAGE 5.90, *EAR CORN RANGE 55.00-62.00, AVERAGE 58.50

SOUTHEASTERN, CENTRAL & SOUTH CENTRAL SUMMARY

CORN NO. 2-Y RANGE 2.00-2.35, AVERAGE 2.21; @WHEAT NO. 2-Y RANGE 2.80-3.35, AVERAGE 3.04,

BARLEY NO. 3 RANGE 1.35-1.90, AVERAGE 1.65; OATS NO. 2 RANGE 1.80-2.20, AVERAGE 2.04, SOYBEANS NO. 1 RANGE 5.90-6.25, AVERAGE 6.07, *EAR CORN RANGE 52.00-80.00, AVERAGE 63.87

MONTH AGO

CORN NO. 2-Y RANGE 2.18; @WHEAT NO. 2-Y RANGE 3.10, BARLEY NO. 3 RANGE 1.64, OATS NO. 2 RANGE 2.02; SOYBEANS NO. 1 RANGE 5.95, *EAR CORN 60.60

YEAR AGO

CORN NO. 2-Y AVERAGE 1.69, @WHEAT NO. 2-Y AVERAGE 2.69, BARLEY NO. 3 AVERAGE 1.46, OATS NO. 2 AVERAGE 1.67, SOYBEANS NO. 1 AVERAGE 4.68, *EAR CORN AVERAGE 52.53

New Holland Hay

New Holland, PA
Monday, Feb. 29

Report Supplied by Auction

225 LOADS
ALFALFA, 44.00-150.00, MIXED HAY, 50.00-142.00; TIMOTHY, 60.00-112.00; CORN: 73.00-85.00, STRAW: 31.00-105.00.

Vintage Hay

Paradise, Pa.

Thursday, Mar. 3, 1988

Sale Time 1:00 P.M.

Report Supplied by Auction

ALFALFA HAY: 67.00-145.00
MIXED HAY: 70.00-75.00
TIMOTHY AND TIMOTHY MIX: 82.50.
STRAW: 82.00-84.00.

Good's Hay

Leola, Pa.

Wed., Mar. 2, 1988

Report Supplied by Auction

158 LOADS.
ALFALFA: 61.00-156.00.
MIXED HAY: 60.00-147.00.
TIMOTHY: 70.00-96.00.
ORCHARD GRASS: 59.00-90.00
CLOVER: 57.00-82.00.
OATS: 2.70 BU.
CORN: 68.00-80.00
MEADOW GRASS: 30.00-55.00
STRAW: 59.00-87.00

Westminster Hay

Westminster, Md.

Tuesday, Mar. 1, 1988

Report Supplied by Auction

TOTAL LOADS 58
ALFALFA MIXED 62.50-89.00, 1.70 BALE.
ALFALFA: 1.40-1.90 BALE, 64.00-91.00 AND GOOD, 109.00-130.00
TIMOTHY MIX: 1.00-1.80 BALE.
TIMOTHY- .95 BALE, 61.00-88.00.
TIMOTHY AND GRASS. 43.00-70.00
BLUE GRASS: 57.50.
GRASS: 51.00-75.00, 35.00 RND. BALE.
STRAW: BARLEY: 79.00; WHEAT: 63.00-77.50; OAT: 66.00-71.00.
WOOD: 55.00-62.00 CORD; SOFT-WOOD: 25.00.

Green Dragon Hay

Ephrata, Pa.

Friday, Feb. 26, 1988

Report Supplied by Auction

TOTAL LOADS: 173.
ALFALFA: 45.00-150.00.
MIXED HAY: 38.00-145.00.
TIMOTHY: 61.00-101.00.
CLOVER: 1 LD., 82.00
OATS: 1.80-2.50 BU
CORN: 65.00-81.00.
GRASS: 50.00-111.00
STRAW: 52.00-90.00

Frederick Co. Hay

Buckeystown, Md.

Thursday, Mar. 3, 1988

Report Supplied by Auction

TOTAL LOADS 53 MARKET ABOUT STEADY. DEMAND FAIR.
ALFALFA 9 FAIR TO GOOD, 94.00-130.00, 7 FAIR, SOME DAMAGED, 62.00-85.00.
MIXED HAY: 2, 55.00-70.00.
TIMOTHY: 8, FAIR TO GOOD, 80.00-120.00, 7 FAIR, SOME DAMAGED, 55.00-77.00.
CLOVER: 2, 55.00-82.00.
GRASS HAY: 3 LDS., 47.00-60.00, 17.00 BIG RND. BALE, DAMAGED.
STRAW: 9 LDS., FAIR, NO FANCY, 59.00-70.00.
WOOD: 3 LDS. SPLIT OAK, 70.00-75.00 CORD; MIXED: 30.00 CORD, DRY WOOD SHAVINGS: 100.00 LD.

HOSTETTER PORK

Wanted To Buy
Crippled and
Disabled Sows
and Boars

Hogs Slaughtered For
Federal Inspection
PHONE 717-274-7609

Seeking Profits In Commodities Trading?

- Hedging
- Speculating
- Managed Account
- Commodity Options

Call Forney Longenecker,
Commodities Investment Executive,
At (717) 295-8914

SHEARSON
LEHMAN BROTHERS
29 E. King St.
Lancaster, PA 17603

SHEARSON
LEHMAN
BROTHERS

AMERICAN
EXPRESS

HERE TO STAY!

MAKE 1988 THE YEAR TO GET ACQUAINTED WITH
NEW HOLLAND SALES STABLES, INC. - THE ACTION AUCTION

MONDAY

FAT HOGS



EARLY BIRD HOG SALE

7:30 AM
For Your Protection Your Hogs Must
Be Identified

10:00 AM

HORSES MULES



11:00 AM



HAY
STRAW
GRAIN

1:30 PM

BEEF SALE
CALF, SHEEP,
GOATS



WEDNESDAY

DAIRY 11:00 A.M. COWS



HEIFERS, BULLS

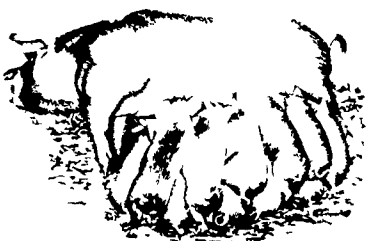
NEW HOLLAND SALES STABLES, Inc.

12 Miles East of Lancaster
on Route 23, New Holland, Penna

The Action Auction
717-354-4341

Mgr - Abe Diffenbach - 717-393-4464
Norman Kolb - 717-397-5538
Field Representatives
Alan Diffenbach 717-656-9806
Luke Eberly 215-267-6608 - 738-1865

WEDNESDAY - 1:30 P.M.
FEEDER PIG SALE



We endeavor to keep our barns clean.
than yours. State graded until 12 Noon

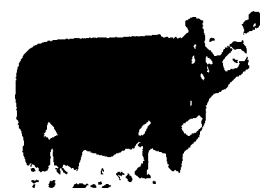
THURSDAY

10:00 AM

BULLS -



STEERS -
BEEF COWS

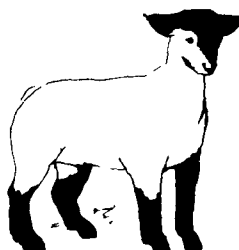


1:30 P.M.

CALVES



SHEEP
GOATS



Market your livestock thru New Holland Sales, your neighbor does
Pick-up your check before you leave