



# Livestock market and auction news

## Virginia Weekly

Abington, Va.

Wed., February 24, 1988

SOUTHWEST VIRGINIA AREA SUMMARY INCLUDES WYTHEVILLE LIVESTOCK AUCTION ON FEBRUARY 23, 1988 ALL TRENDS COMPARED TO LAST TUESDAY.

SLAUGHTER HOGS: 9 HEAD. TOO FEW TO ESTABLISH A MARKET

BARROWS & GILTS. U S 2-4 200-250 LB. \$44.00-44.50 SOWS: U S 1-3, 300-500 LB. \$32.25-38.00 500 LB & OVER \$36.00 BOARS: \$25.50

SLAUGHTER CATTLE. 82 HEAD SLAUGHTER COWS \$1-3.00 LOWER SLAUGHTER COWS: 81 HEAD. CUTTER & BNG UT. 1-3 \$43.25-48.50 BRKG. UT & COMM. 2-4 \$46-49.50 CANNER & LOW CUTTER 1-2 \$38-44.50.

SLAUGHTER BULLS: 1 HEAD

YIELD GRADE 1-2, 1600 LBS & OVER \$58.75.

LAMBS: 43 HEAD SLAUGHTER LAMBS \$2.25 LOWER. SLAUGHTER LAMBS: HIGH CHOICE & PRIME, 95-125 LB. \$83.25 CHOICE, 85-125 LB \$81.25 FEEDER LAMBS: CHOICE & FANCY, 70-85 LB \$92.75 SLAUGHTER EWES, ALL GRADES, \$29-34.00 SLAUGHTER RAMS, ALL GRADES, \$28.00 (5 EWES & 3 LAMBS \$58) FEEDER CATTLE 154 HEAD NO

TREND STEERS MEDIUM 1 LARGE 1 SMALL 1 MED & LARGE 2 300-400 LB 101.00-108.00 --- 93.00-99.00 400-500 LB 91.00-100.00 --- 90.00 --- 500-600 LB 88.50-92.50 --- 600-700 LB 77.00-82.00 --- 700-800 LB. 72.00-73.00 --- HOLSTEIN STEERS MEDIUM & LARGE 1&2 300-500 LB 72.00-81.50 500-700 LB 66.00-82.00 900 1100 LB 52.00

HEIFERS MEDIUM 1 LARGE 1 SMALL 1 MED & LARGE 2 300-400 LB --- 78.00-88.00 400-500 LB 82.00-85.00 --- 78.00-79.00 500-600 LB 72.00-76.00 --- 68.00-72.50 ---

BABY CALVES RETURNED TO FARMS: 25 HEAD NEWBORN TO 4 WEEKS OLD \$77.50-112.50

DATE CHANGE YEAR AGO 02/24/88 02/23/88 02/25/87 WHEAT: KANSAS CITY 3.20-3.23 DN 1-NC 2.78-2.84 MINNEAPOLIS 3.29 NC 3.09 1/2 PORTLAND 3.10-3.15 DN 3-2 3.10-3.13 ST LOUIS 2.92-3.05 UP 1 2.94-3.03.

CORN, U.S. NO. 2 YELLOW: KANSAS CITY 1.97-2.00 UP 3-4 1.46-1.50 MINNEAPOLIS 1.81 UP 4 1/2 1.31 3/4 SO. IOWA 1.88-1.89 UP 1-NC 1.30 OMAHA 1.82-1.83 UP 4-2 1.35-1.37.

SOYBEANS, NO. 1 YELLOW: KANSAS CITY 6.12-6.16 UP 4.4.68-4.78 MINNEAPOLIS 6.01 3/4 UP 3 3/4 4.67 1/2 SO IOWA 6.06 UP 1 NA C ILL. PROCESSORS 6.25-6.30 UP 3-4 4.80 1/2-4.86 1/2.

\*KANSAS CITY, US NO. 1 HARD RED WINTER WHEAT, ORDINARY PROTEIN. MINNEAPOLIS, US NO. 1 DARK NORTHERN SPRING WHEAT, 14% PROTEIN PORTLAND, NO 2 SOFT WHITE WHEAT, ST. LOUIS, NO 2 SOFT RED WINTER WHEAT.

FUTURES CLOSE: KANSAS CITY (MAR) WHEAT 3.20 1/4 UP 1/2 2.78 1/4. MINNEAPOLIS (MAR) WHEAT 3.02 NC 2.74 1/2

CHICAGO (MAR) WHEAT 3.17 UP 1/2 2.78 1/2

(MAR) CORN 1.99 UP 2 1/2 1.44 1/4 (MAR) SOYBEANS 6.24 3/4 UP 3 3/4 4.83 1/2

EXPORT: BARGE OR RAIL, PORT OF NEW ORLEANS OR NORTH TEXAS GULF NO 1 HARD RED WINTER WHEAT ORDINARY PROTEIN 3.53 DN 1 3.12 1/4 NO 2 SOFT RED WINTER WHEAT 3.32-3.34 UP 4-2 3.14-3.16 NO 2 YELLOW CORN 2.21-2.23 UP 3-4 1.68-1.70 NO 2 YELLOW SORGHUM 3.75-3.79 UP 9-6 3.04-3.14 NO 2 YELLOW SOYBEANS 6.52-6.53 UP 7.4 5.06-5.08

## Lebanon Valley Livestock Auction

Fredericksburg, Pa.

Tues., February 23, 1988

CATTLE 225 MARKET REPORT NOT AVAILABLE THIS WEEK. Although headages were supplied by Auction

CALVES 215

HOGS 223.

FEEDER PIGS 2 No Market Test

SHEEP 1 No Market Test.

GOATS 0 No Market Test

## CRIPPLED AND DISABLED

Cows, Steers & Bulls For Slaughter Under USDA Inspection

Call Wayne Taylor

717-866-6289

215-286-9400

Lebanon, Berks, Lancaster & Chester Counties

## Green Dragon Livestock Sales



Location: Ephrata RD 4. 1 mile N. on North State St., Ephrata.

## COWS COWS COWS SALE EVERY FRIDAY

Lots of good Northern Feeder & Stockers Slaughter Cows - Bull Steer, Veal-lamb

11:00 A.M.-Beef Sale 200-300 each week.

1:00 P.M.-Dairy Sale.

7:00 P.M.-Small Animal Sale.

For Special Sales and Herd Dispersals on farm or at our barn or other market information call: Office 717-733-2444, Home 717-838-4318.

WALTER H. RISSER, Proprietor

All out of state and new buyers must have cash or certified check or current letter of credit from bank.



## ATTENTION FARMERS

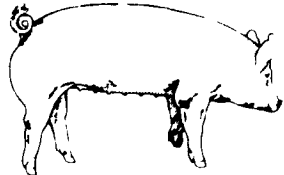
EVERY MONDAY HATFIELD PACKING CO. and MOYER PACKING CO.

Will Receive Your Hogs and Cattle at the DANVILLE LIVESTOCK MARKET RD 4, Danville, PA

- We will receive your hogs from 8 AM to 12 Noon every Monday Your hogs will be weighed and paid for immediately.
- We will also accept your sows & boars
- Your cattle will be received from 12.30 to 5 P.M. We will either pay you for your cattle immediately or you may sell them dressed weight
- There will not be a commission or yardage fee deducted from your check
- You may call our office Monday morning and we will be able to tell you the base price for hogs for the day

MELVIN M. LEHMAN - Owner Danville Buying Station

Phone: 717-275-2880



## EMERY'S BUYING STATION

OPEN TO RECEIVE YOUR MARKET HOGS

AT THE GREEN DRAGON MARKET RD 4, EPHRATA, PA 17522 1 MILE NORTH OF EPHRATA ON NORTH STATE STREET.

HOURS: MONDAY, TUESDAY, and WEDNESDAY 7:00 A.M. to 11:30 A.M.

215-458-5677 Residence

717-733-9648 Office

215-458-5677 Residence

717-733-9648 Office

YOU ARE PAID FOR YOUR HOGS IMMEDIATELY

Ken & Lois Emery, Proprietors

## SWINE PRODUCTION SALES AND SERVICE

Feeding Programs And Services To Meet Your Individual Needs

Computerized Record Keeping System

Grain Purchasing And Exchange

Developing Individual Financial Programs



Supplying Farm Fresh Feeder Pigs

Marketing and Hedging Services

Marketing of Genesis Breeding Stock

Quality Products And Services - Working For YOU

419 West High Street Elizabethtown, PA 17022

Elizabethtown (717) 367-1525

PA Toll Free 1-800-468-5524

Shippensburg (717) 532-7845

## PLEASE NOTE!

Change of Location to Home Farm On Hill Rd. in Heated Shed

FRIDAY, MAR. 11 - 1:00 PM ON THE FARM MONTHLY

BRED GILT SALE

Sale To Start Promptly Every 4 Weeks Snow Date

Following Tuesday same time.

Located 4 miles east of former location, 1 mile off 472 midway between Quarryville & Oxford, PA, 1 mile south of Kirkwood, turn west off 472 at Union Church (Street Rd.) 1 mile to crossroad turn left, 2nd farm on right. Hill Road. Watch for sale signs.

Validated Brucellosis Free Herd #169 Qualified Pseudorables Free Herd #55

50 to 60 Head WHITE DIAMOND GILTS Large White & Landrace, first generation true F-1 gilts. Parent stock originated from Lieske Bros. Minnesota. Very productive in litter size and feed conversion.

Vaccinated for Lepto, Erysipelas, Rhinitis, E'Coll, Pasteuerella

Hand mated with Breeding Dates

Local Truck Available

No Hogs Sold On Commission

JOHN B. STOLTZFUS

R.D. 1, Kirkwood, Pa.

Abe Dffenbach, Auctioneer AU225L

NEXT SALE FRI., APRIL 8, 1:00 P.M.

## HAY & STRAW SALE

12:00 Noon

Every Wednesday Westend of Avondale at the intersection of Baltimore Pike and Route 41.

Harvey Z. Martin, 215-268-3604 (Office)

215-445-5303 (Residence)

## HAY & STRAW AUCTION

EVERY THURSDAY

AT 1 PM

VINTAGE SALES

STABLES, INC.

10 miles East of Lancaster on Rt. 30, Paradise, PA

717-442-4181 or 768-8204

L. Robert Frame, Mgr.

## KING'S AUCTION

KIRKWOOD

Hay, Straw and Grain Auction

EVERY TUESDAY

12:00

Located Rt. 472 5 miles south of Quarryville or 6 miles north of Oxford corner of Rt. 472 and Noble Road at Rouse Tobacco Station.

Lloyd H. Kreider, Auctioneer AU-000512L

No out of state checks ALL TRUCKERS AND FARMERS WELCOME