

FARM EQUIPMENT AUCTION

SATURDAY MARCH 12, 1988

10 AM

(Snow/Rain Date Monday, March 14th)
Manitta Farms,
East Moriches L.I., New York

(10) TRACTORS

(2) Int. 706's, Int. 560 w/Loader, Ford 4000 - Hi-Low, Int. Model 140 w/Cultivators, Farmall Super C w/Cultivators, (2) Ferguson 35's w/Step Down, (2) Allis Chalmers, Model G.

(3) TRUCKS

1980 GMC BRIGADIER MOD. 8000 - DIESEL V653T - 10 WHEELER, 10 SP. ROAD RANGER - 22' THERMOKING REFR. BODY W/2 SIDE DOORS (INSIDE HT 8'), 1974 GMC Mod. 6000 - 45,000 Mi. w/18' Box Body, 1956 Int. w/16' Ziggy Platform Body. TRUCKS TO BE SOLD 12:00 (Noon)

MISC. EQUIPMENT

(3) Ford Cultivators - 3 Pt., (2) 3 Pt. Tool Bars, (3) Int. (A) Cultivators, (2) 3 Rw. New Holland Transplanters, (5) 2-Wheel Farm Trailers, (2) 3 Pt. Bedmakers, 4 Rw Sulky Cultivator, 2 Rw Sow Rite 3 Pt., New Idea 10' Lime Drill, Gandy 10' Spreader, Ferguson 3 Pt. disc, 12' J.D. Hydr. Disc, 10' J.D. Disc - Tow Type, 10' Chisel Plow, New J.D. Scraper Box 3 Pt., Woods Rotary Cutter, Brush Plow, 2 Rw New Holland Transplanter, (3) Planter Jr. Sulky Seeders - 3 Pt. 2, 3 and 4 Row, 10 Rw Meyer Sprayer 30 GPM, Ford 16" 3 BT. Rollover Plow Model 145, (2) Sets Steel Harrows, 3 Pt. Diadum Spinner, 3 Pt. Lo-Hi Press. Meyers Sprayer - Fiberglass Tank - 3 Bed Boom.

IRRIGATION MOTORS

J.D. 276 Diesel w/Hale Pump 1000GPM, 6 Cyl. Hale w/750 GPM, Marlo 6 Cyl. w/750 GPM.

IRRIGATION PIPE

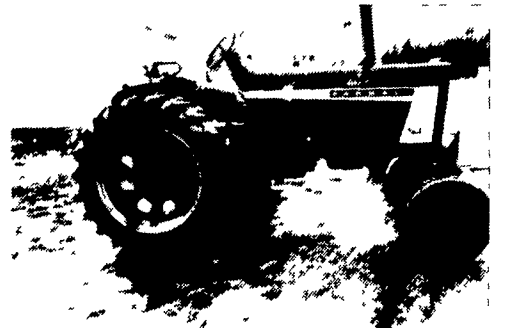
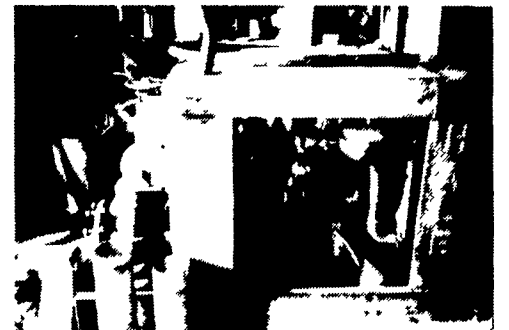
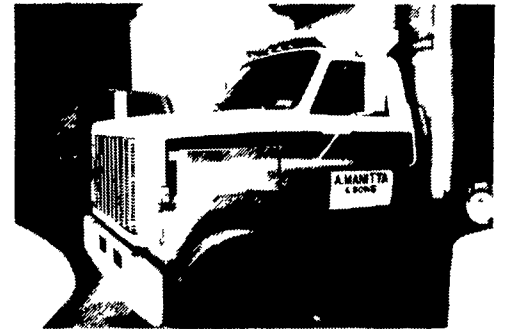
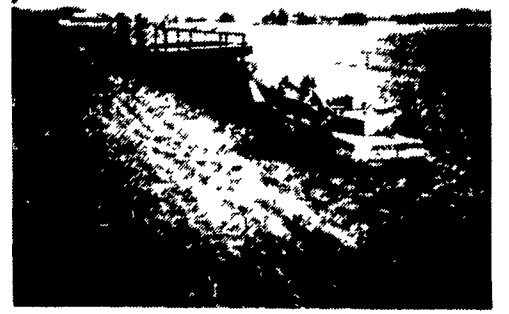
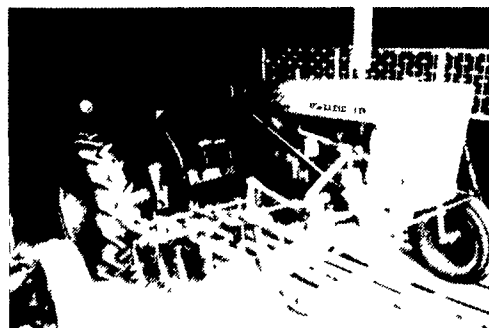
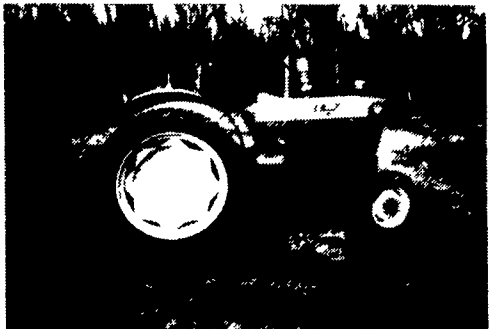
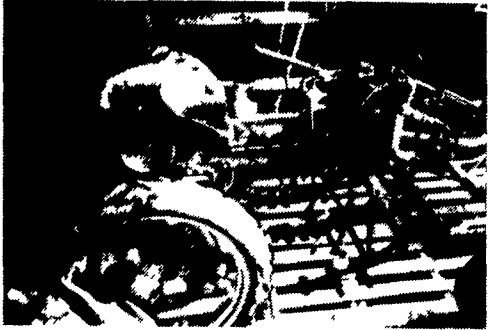
200 Lengths 4"x30' w/Risers, 125 Lengths 4"x40' w/Risers, Approx. (40) 5"x40', 30' Pipe Trailer, Ass't Fittings.

40'x10' HOUSE TRAILER- Excellent Condition.

SHOP TOOLS

Steam Jenny Cleaner, Lg. Air Compressor, Lg. Snap-On Socket Set, Torches, Weld. Machine, Table Saw, Drills and Much More.

ALL EQUIP. IN EXCELLENT COND.



DIRECTIONS - Sunrise Highway (Heading East)
 Take Exit 61 to County Rd. 51 South to Montauk Hwy. - Make Right ½ Mile on Left Woodlawn Ave, ½ Mile to Evergreen Ave. Make Right - Watch for Auction Arrows.

TERMS - CASH OR CERTIFIED FUNDS

JIM MCBURNIE, AUCTIONEER
228 MIDDLE RD., RIVERHEAD, L.I., N.Y. 11901

BY ORDER OF
A. MANITTA & SONS

LOCATION - Evergreen Avenue, East Moriches, L.I., N.Y.

(516) 727-2546

(516) 727-0542